



Liberty Furniture
INDUSTRIES, INC

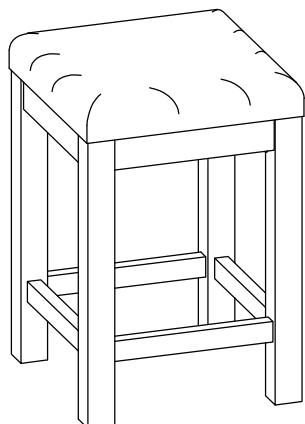
ASSEMBLY INSTRUCTION

Item #: 798-OT9001

DESCRIPTION: UPH CONSOLE STOOL

Thank you for purchasing this quality product. Be sure to check all packing material carefully for small parts which may have come loose inside the carton during shipment. Identify and count all parts and compare with the parts list below:

PARTS LIST:



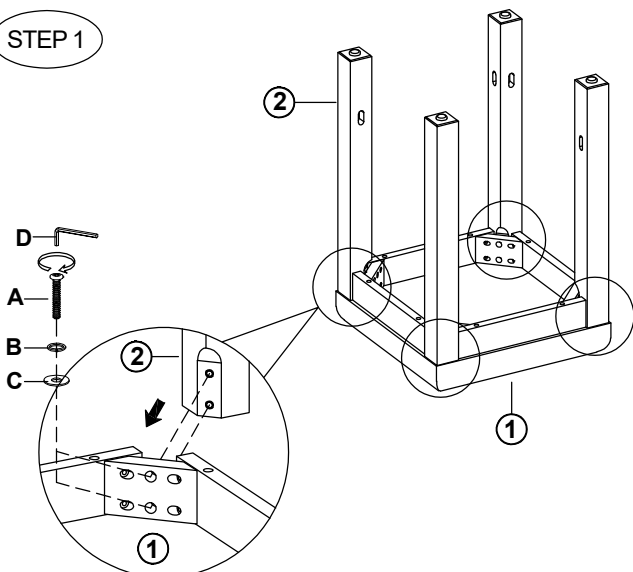
①	②	③
SEAT CUSHION-FRAME: 1PC	LEGS: 4PCS	STRETCHER: 4PCS

④

HARDWARE LIST

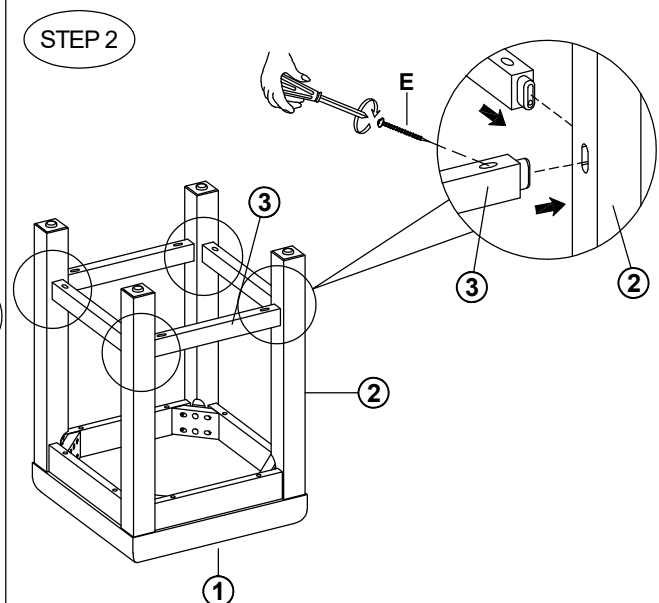
NO.	Drawing	Description	Q'ty
A		Bolt (Ø5/16"x2-1/4")	8pcs
B		Spring Washer (Ø5/16")	8pcs
C		Flat Washer (Ø5/16"x22mm)	8pcs
D		Allen Key (5mm)	1pc
E		Wood Screw (Ø8x2")	8pcs

STEP 1



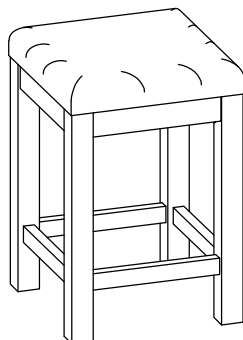
Note: Only tighten bolts 80%

STEP 2



STEP 3

Note: Tighten bolts and screw 100% and then complete the assembly.



CLEANING INSTRUCTION

Clean the Uph Console Stool surface with a furniture polish and soft cloth.

Made in VietNam