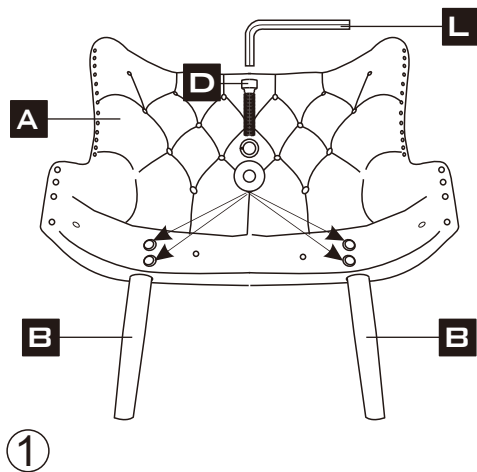
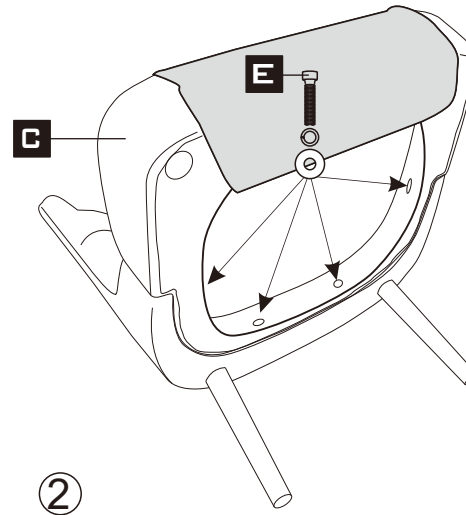


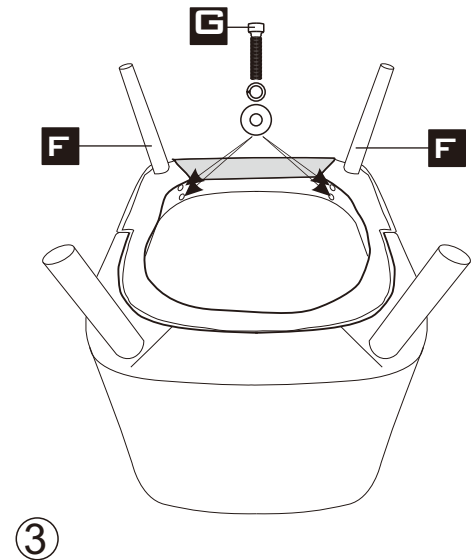
# ASSEMBLING INSTRUCTION



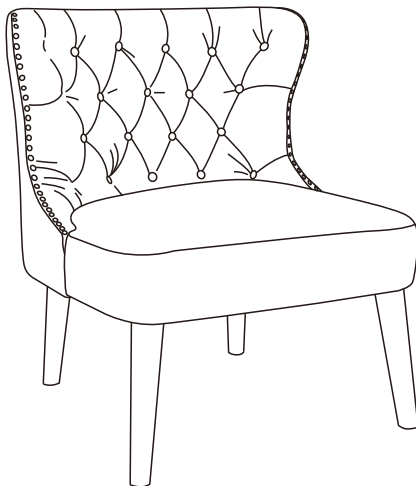
Put the screws in the holes,  
tight the screws, 100% is ok



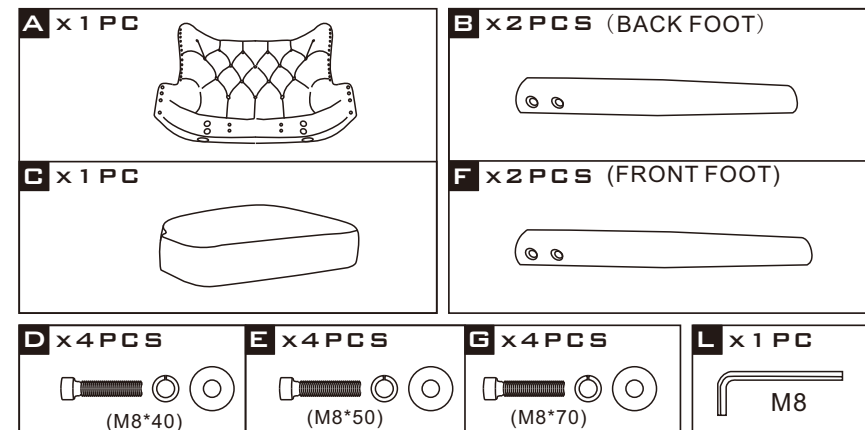
Put the screws in the holes,  
tight the screws, but not too  
tight, 90% is ok



Put the screws in the holes,  
tight the screws, but not too  
tight, 90% is ok



Stand the chair upright & ensure it is  
level before tightening all screws.  
Then tight all the screws to 100%  
Then Stick the black part on the seat



Please find hardware pack inside the dust cover underneath seat cushion