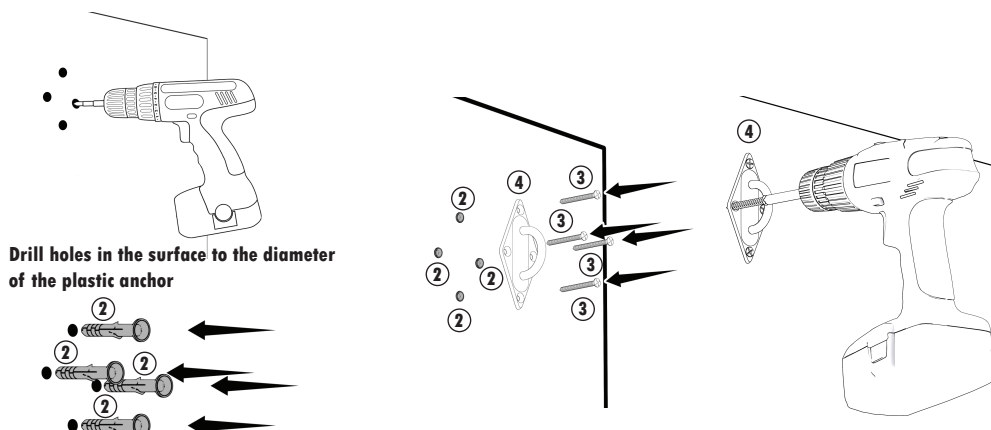


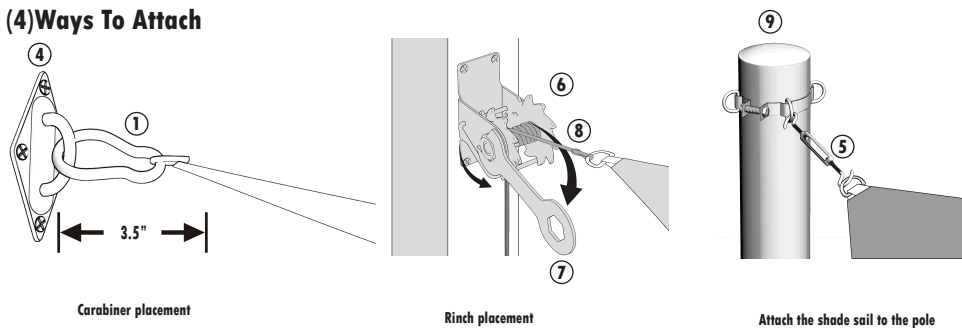
(3) Pad Eye Installation



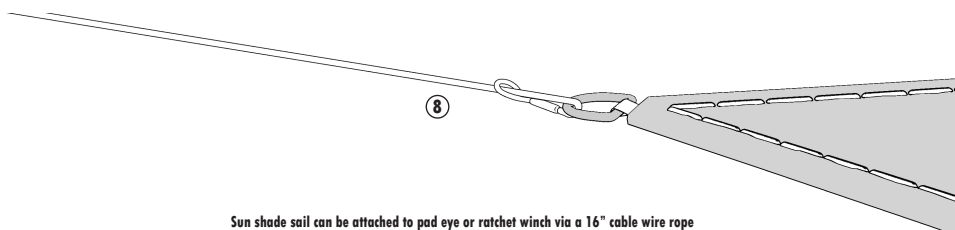
Inlay the plastic ancor to the hole

Insert the screw into the plastic ancor to fix the pad eye

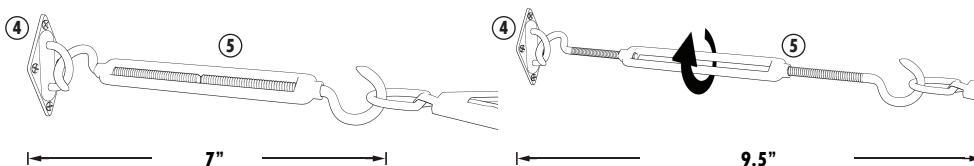
(4) Ways To Attach



(5) Cable Extension

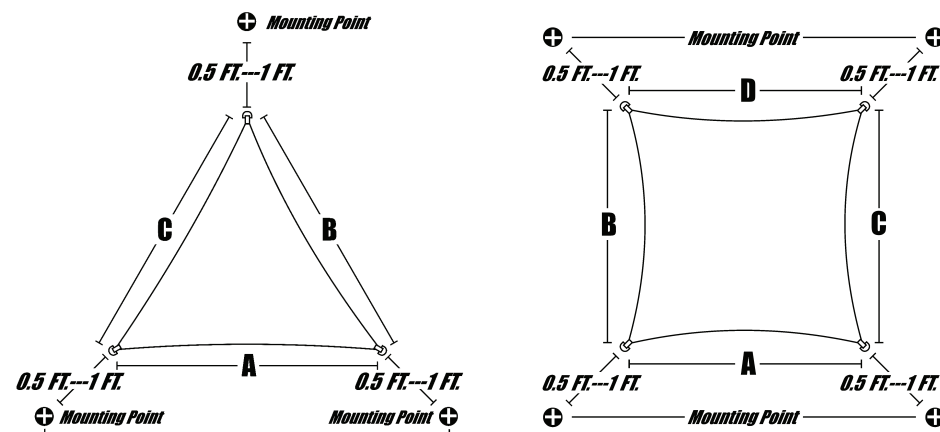


(6) Turnbuckle Placement



Turnbuckle can be extended to 9.5" from 7"

3, HOW TO MEASURE



Determine what size shade sail you will need

Take stock of your installation hardware; you should have four mounting fixtures (Pad eyes or ratchet winch wall mounts), four linking accessories (turnbuckles, snap hooks), and extension wire ropes if necessary.

Connect one corner of your shade sail to one side of the turnbuckle and the pad eye to the other side of the turnbuckle.

Repeat this process with the rest of the corners using the turnbuckles and snap hooks remaining in your installation kits.

You may notice wrinkles in the fabric and sagging, properly tension your shade sail using your turnbuckles until the shade sail is rigid and there are little to no creases.

4, DISCLAIMER

End-User License Agreement ("Agreement")

Please read all instructions before beginning installation. These guidelines are provided in good faith to help prevent any problems caused by errors in installation. The manufacturer of this product shall not be held responsible for installation actions taken or not taken. There are many details of installation that are assumed to be general construction knowledge to experienced installers; which are not included in these instructions. These installation guidelines are intended to be strictly recommendations and are not to serve as a step-by-step, fail-safe installation checklist. Selection of an experienced installer is the sole responsibility of the project owner and architect.

We DO NOT accept any responsibility for job failure resulting from or associated with improper site environmental conditions and installation failure due to expansion contraction issues.

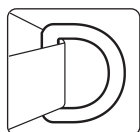
Sun Shade Sail Installation guide

1, SPECIFICATION

(1)All Size & Color of Product:

	Square		Rectangle		Triangle		Right Angle Triangle	
Sun Shade Sail	10'x10' 12'x12' 14'x14' 16'x16'		8'x10' 8'x12' 8'x14' 10'x13' 10x16' 10'x20' 12'x16'	12'x18' 12'x20' 14'x16' 14'x18' 14'x20' 16'x20'	8'x8'x8' 10'x10'x10' 12'x12'x12' 14'x14'x14' 16'x16'x16' 18'x18'x18' 20'x20'x20'	22'x22'x22' 24'x24'x24' 28'x28'x28' 32'x32'x32'	10'x10'x14.1' 12'x12'x17' 14'x14'x19.8' 16'x16'x22.6' 18'x18'x25.5' 20'x20'x28.3' 24'x24'x33.9'	
Available Color	Beige Blue Grey Brown	White Turquoise Sand Red	Beige Blue Grey Brown	White Turquoise Sand Red	Beige Blue Grey Brown	White Turquoise Sand Red	Beige Blue Grey Brown	White Turquoise Sand Red
Waterproof	9.5'x9.5'	14'x14'	7'x12'		12'x12'x12'	16'x16'x16'		
Available Color	Beige Blue Grey Brown	White Turquoise Sand Red	Beige Blue Grey Brown	White Turquoise Sand Red	Beige Blue Grey Brown	White Turquoise Sand Red	Beige Blue Grey Brown	White Turquoise Sand Red
Super ring	12'x12' 16'x16'	20'x20' 24'x24'	8'x12' 12'x16'	18'x20' 20'x24'	12'x12'x12' 20'x20'x20' 24'x24'x24'	28'x28'x28' 32'x32'x32'		
Available Color	Beige Grey Black	Brown Green	Beige Grey Black	Brown Green	Beige Grey Black	Brown Green	Beige Grey Black	Brown Green

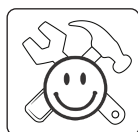
(2)Feature:



D-Ring



95% Blockage Rate



Easy Installation



Economical



Thicker Fabric



Customizable



Permeable



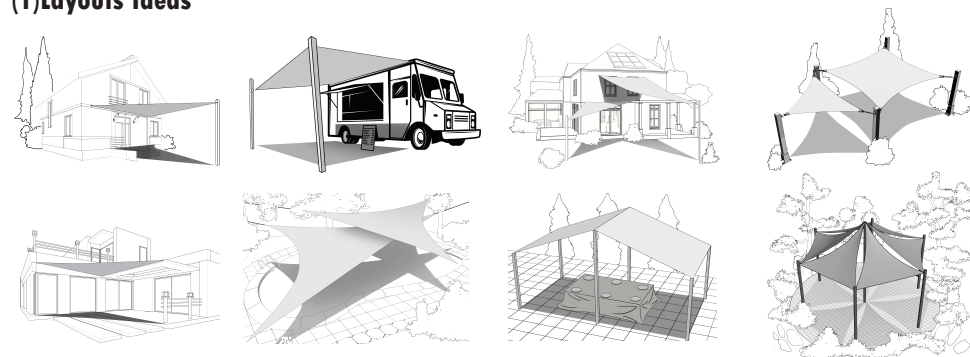
3 year warranty

(3)Recommended accessories(Purchase Separately):

① Carabiner	② Plastic Anchor	③ Screw	④ Pad Eye	⑤ Turnbuckle	⑥ Winch	⑦ Wrench	⑧ Cable Wire Rope	⑨ 8' /12' Pole

2, INSTALLATION

(1)Layouts Ideas



Maintenance Instructions

Sun Shade Sail can be cleaned at any time using a solution of mild detergent and water. Apply the solution with a sponge or a very soft brush. Let the solutions stand on the fabric for 10 minutes and then rinse thoroughly with water from your garden hose.

KEEP AWAY FROM FIRE!

DO NOT iron, DO NOT dry clean.

DO NOT put in the clothes driver or scrub it with a stiff brush, scouring pad, or and abrasive cleaner. ^④

DO NOT bleach as exposure to certain chemicals can lead to the permanent breakdown of fabrics.

(2)Recommended Installation Methods

