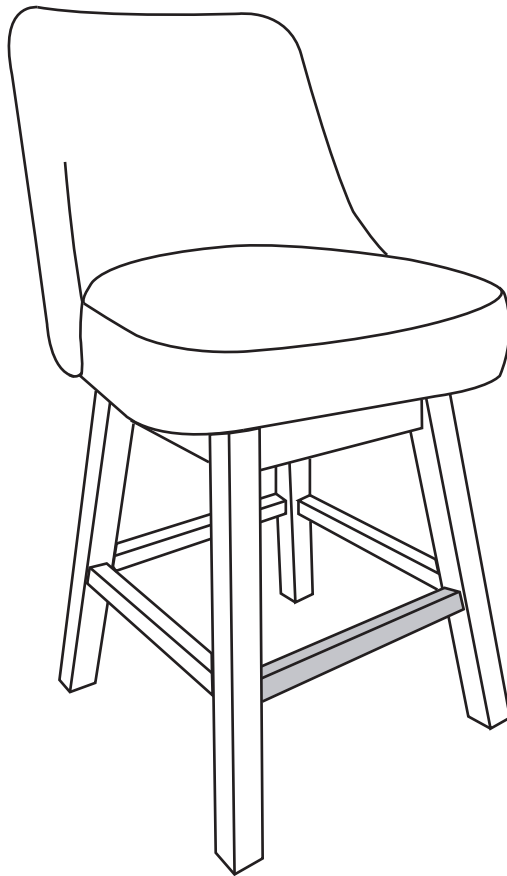


INSTRUCTION MANUAL



**26" Water and Stain Resistant Boucle Upholstered
Swivel Counter Stool**

SKU: ID406

V1.0

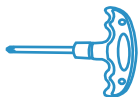
! NOTICE

- Highly recommend immediate clean of the upholstery fabric although it is treated as water and stain repellent. Clean the stool with lukewarm water, mild detergent & soft cloth
- Please do not exceed the weight limitation of this item. Do not stand on as a step ladder.
- Firmly secure all bolts before use. Reconfirm all bolts are secure every 90 days.
- Please adjust the speed slowly when you use electric drill for assembling to avoid screw slippage.
- Do not use or store this item in the proximity of open flame or flammable/combustible chemicals

TOOLS REQUIRED



ALLEN WRENCH
(PROVIDED)



SCREW DRIVER
(PROVIDED)



280 LBS
CAPACITY



1 PERSON
ASSEMBLY



UP TO 20 MIN.
ASSEMBLY

HARDWARE

1

Flat washer
Φ8



8 PCS

2

Lock washer
Φ8



8 PCS

3

ALLEN
WRENCH
M8



1 PC

4

M8 x 60mm
BOLT



8 PCS

5

M4.5 x 50mm
SELF-TAPPING
SCREW



8 PCS

6

SCREW DRIVER



1 PC

PARTS

A

SEAT



1 PC

B

LEGS



With adjustable
feet leveler

4 PCS

C

SIDE FOOTREST



3 PCS

D

FRONT FOOTREST



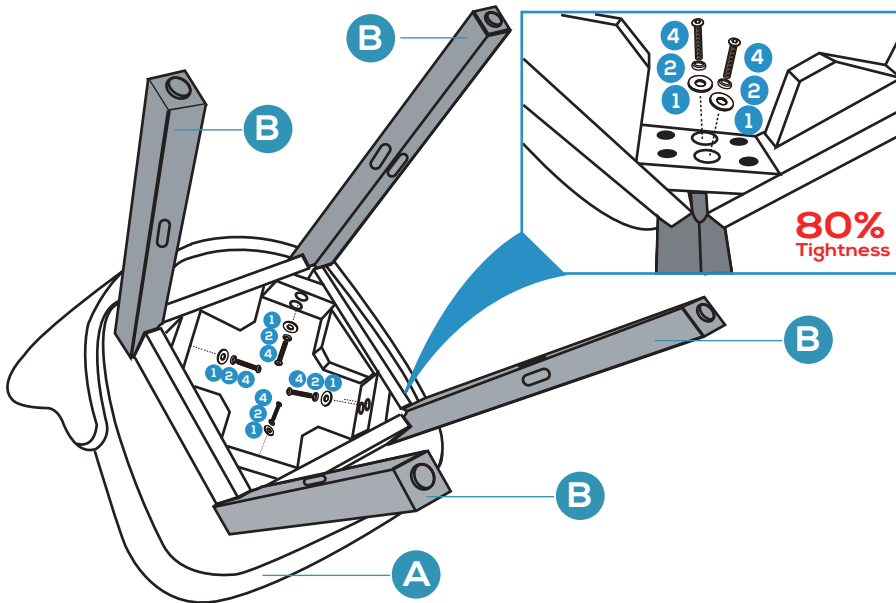
with metal footrest

1 PC

PRODUCT ASSEMBLY

1

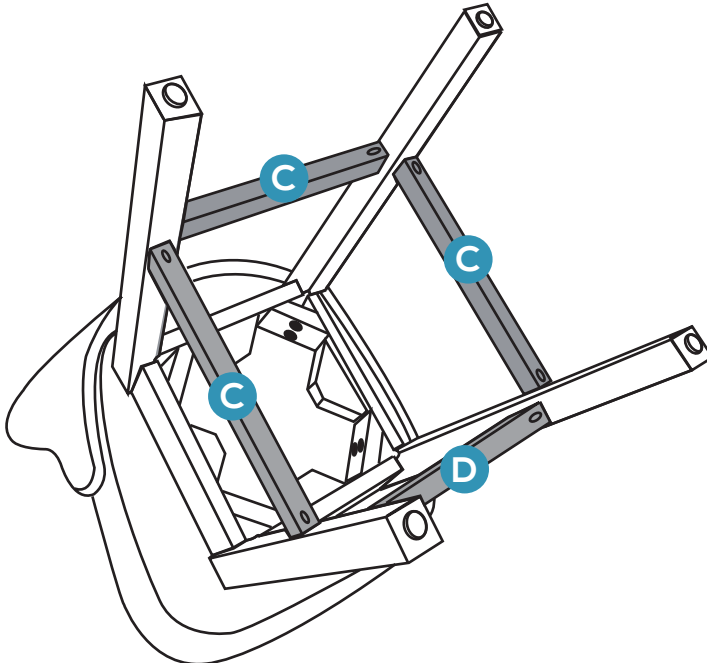
Place part A Seat upside down on flat floor.
Insert 4pcs Part (B) Legs into the Seat as below and loosely attach with 8sets of hardware (#4 Bolt + #2 Lock Washer + #1 Flat Washer) by 60%-80% tightness.



2

Attach 3pcs Part (C) and 1pc Part (D) to Legs. Make sure the self-tapping screw holes are facing upwards.

Noted : Please choose whether to keep the metal footrest before assembling.

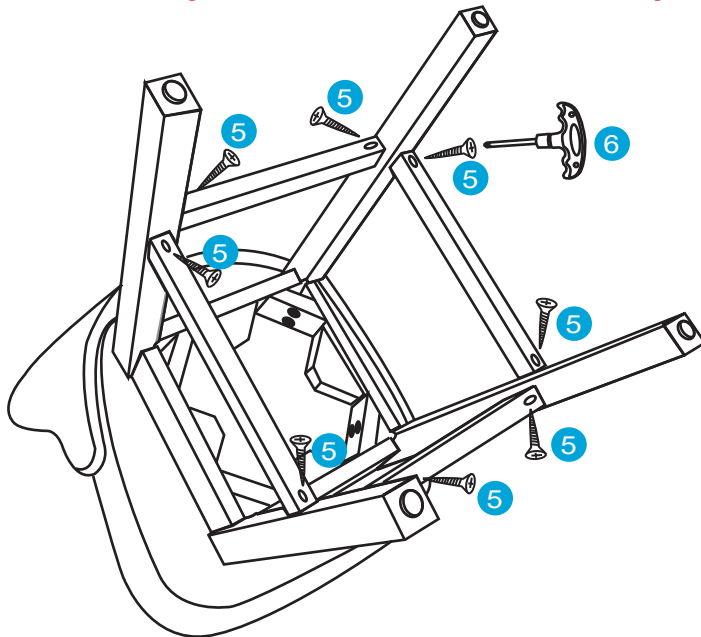


PRODUCT ASSEMBLY

3

Using the screwdriver to tighten tightly 8pcs of Self-tapping Screws (#5) as shown in the diagram.

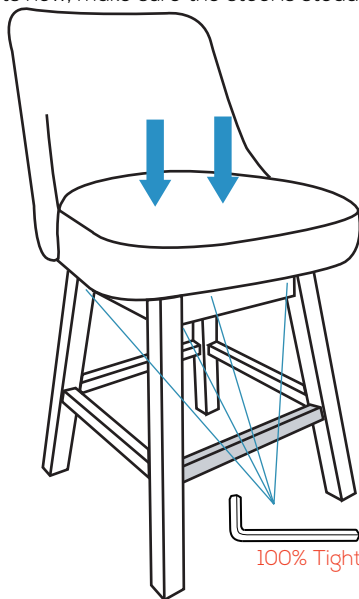
Push hardly when tighten as there is no pre-punched hole in the leg.



4

Place the stool in normal position, sit on the seat and press downward till you feel the legs touch the ground evenly.

Tighten all bolts now, make sure the stool is steady enough to use.

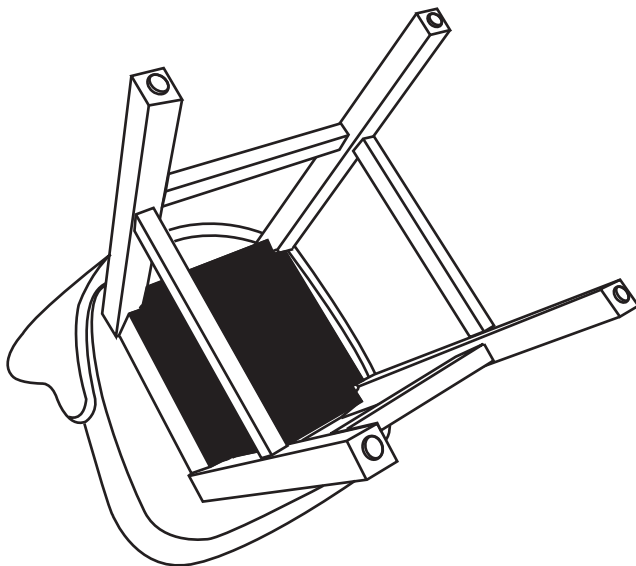


100% Tightness

PRODUCT ASSEMBLY

5

Check the status of the stool and make sure every part is steady.
Cover the black fabric back onto bottom of the seat and turn it to normal position



6

Adjustable feet levelers are provided for you to further adjust the level of the stool.

