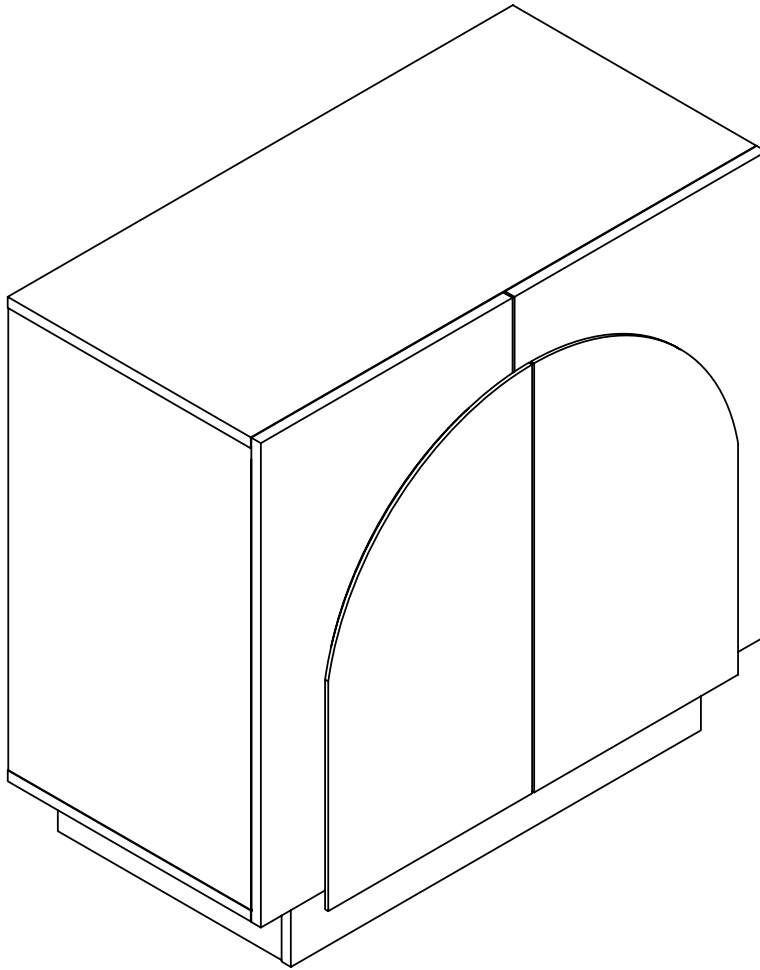


Let's build the

Iris Storage Cabinet

SKU 72020



Scan me!

Free Lifetime
Guarantee

 **nathan james**

25-0813-VN

Ok, let's get rolling

This should be easy, just follow our instructions and you will be back to Netflix in no time.

Estimated time for assembly



100:00

What you need

- Some of your favourite bubbly or your preferred relaxant
- Use the packaging carton as a working surface to prevent product damage during assembly
- Phillips head screwdriver
- Drill
- 1/4" Drill Bit

Weight Limitation

Furniture Max Weight Capacity



150
lbs

Top Max.

70lbs

Adjustable
Shelf Max.

30lbs

Bottom Shelf
Max.

50lbs

Toll-free at 1-866-619-1004

Help@nathanjames.com

Nathanjames.com/help

What's included

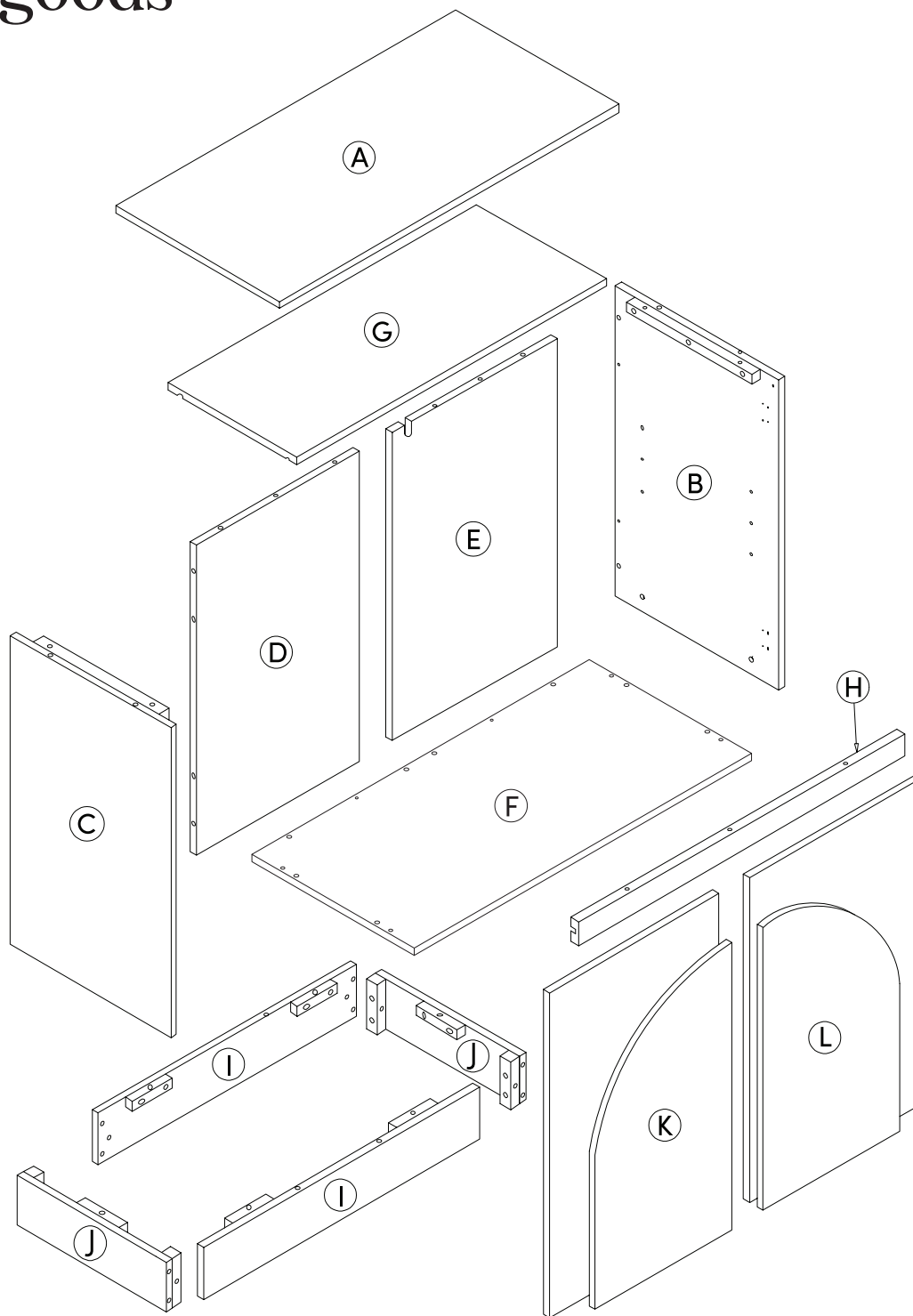
Description	Qty
A Top Panel	1
B Side Panel (Right)	1
C Side Panel (Left)	1
D Back Panel (Left)	2
E Back Panel (Right)	1
F Bottom Panel	1
G Adjustable Shelf	1
H Top Front Stretcher	1
I Long Apron	2
J Short Apron	2
K Door (Left)	1
L Door (Right)	1

Scan me!

Free Lifetime
Guarantee



The goods



IMPORTANT

1. Do not tighten bolts / screws completely until all bolts / screws are lined up and inserted into holes.
2. Do not over tighten screws and bolts to avoid stripping.

What's included

	Description	Qty
1	M6x35mm Cam Bolt	10
2	Cam Lock	10
3	8x30mm Wooden Dowel (Extra 2pcs)	32
4	1/4"x32mm Hex Button Head Bolt	14
5	Flat Washer 1/4"x13mm	18
6	Allen key	1
7	M4x35mm Screw	4
8	1/4"x50mm Hex Button Head Bolt	4
9	Barrel Nuts	4
10	Hinge	4
11	M3.5x15mm Screw (Extra 2pcs)	26
12	Shelf Pin	4
13	Wall Anchor	1
14	M4x12mm Screw	1
15	Anti-Tip Bracket	1
16	Door Catch Plate	2
17	M3x15mm Screw	4
18	Magnetic Catch	2
19	M3x12mm Screw	2
20	Leveler (Extra)	2

1



2



3



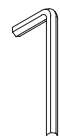
4



5



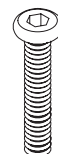
6



7



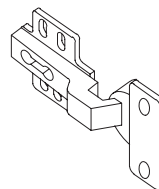
8



9



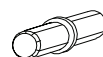
10



11



12



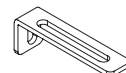
13



14



15



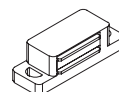
16



17



18



19



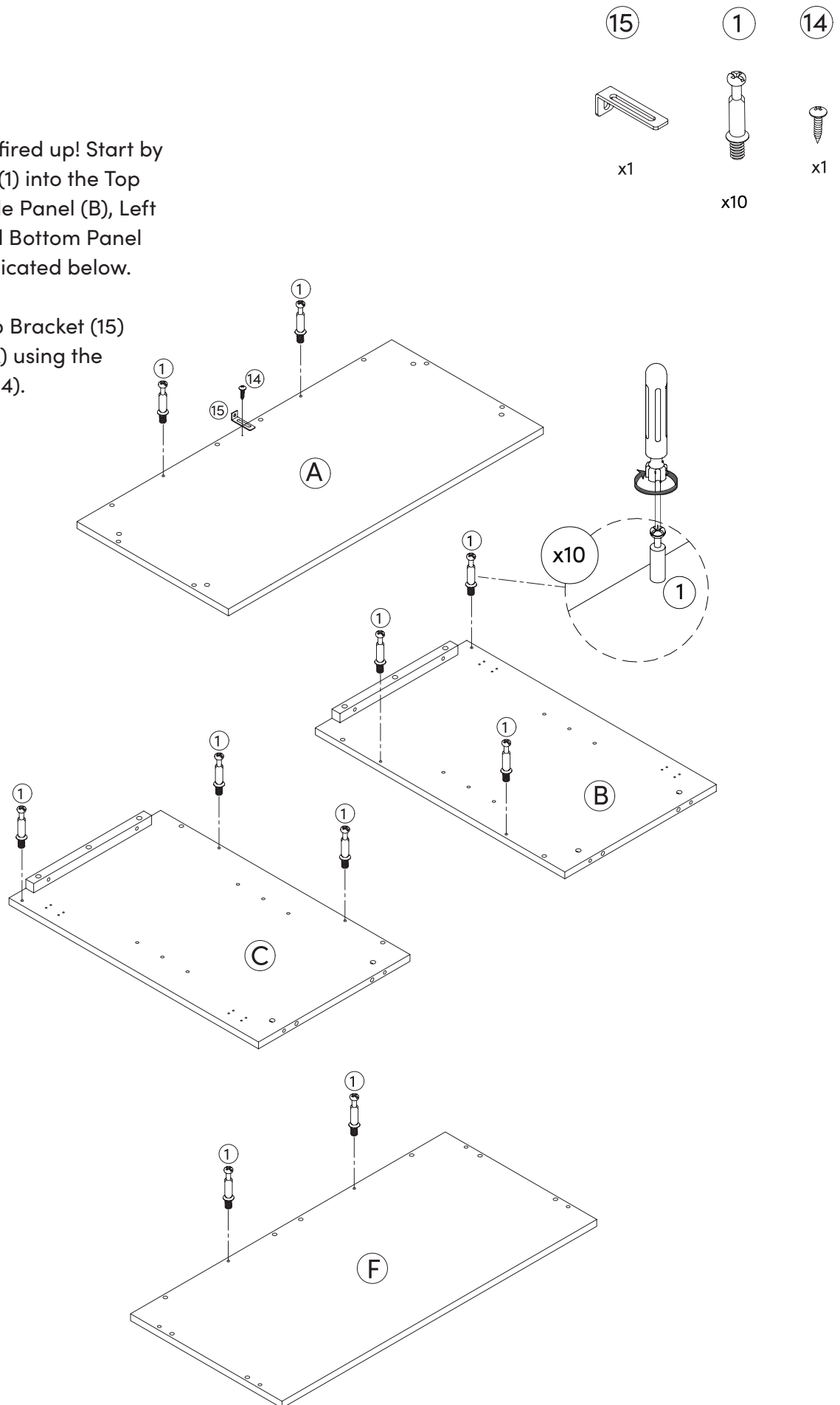
20



Step 1

Let's get this thing fired up! Start by putting Cam Bolts (1) into the Top Panel (A), Right Side Panel (B), Left Side Panel (C), and Bottom Panel (F), in the holes indicated below.

Secure the Anti-Tip Bracket (15) to the Top Panel (A) using the M4*12mm Screw (14).



Step 2

Grab your screwdriver for this step!
Use the Cam Locks (2) and Wooden Dowels (3) to secure the Left Back Panel (D) to the Left Side Panel (C).

See the following page for a quick guide on how to use cam locks!

2

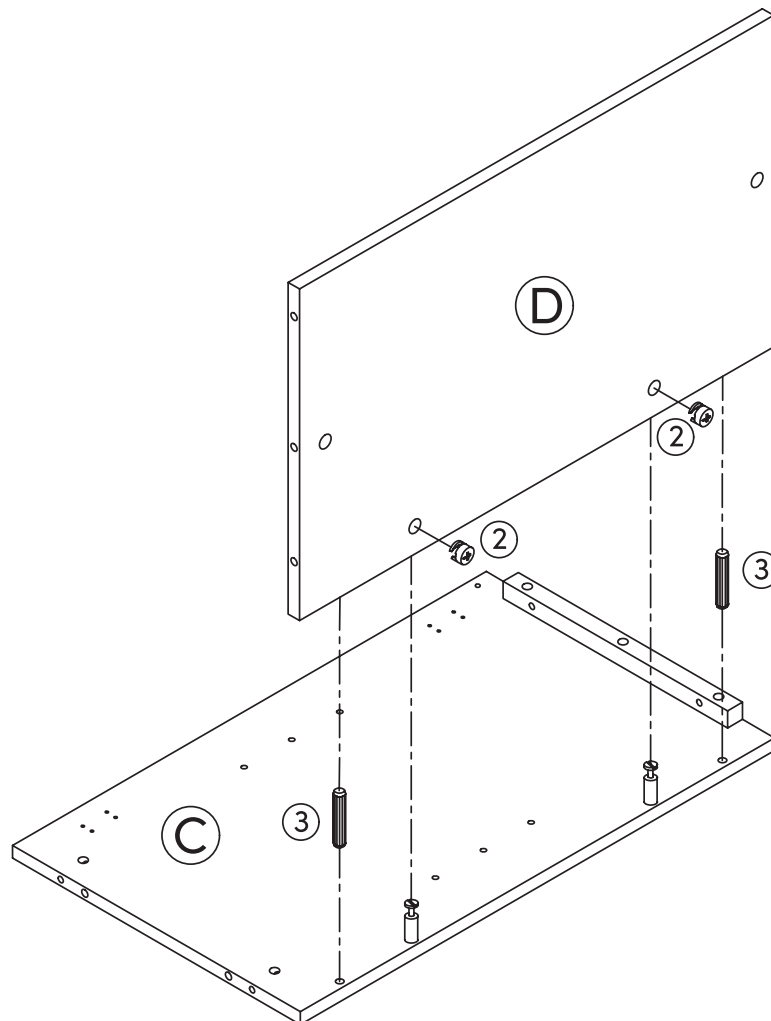


x2

3



x2



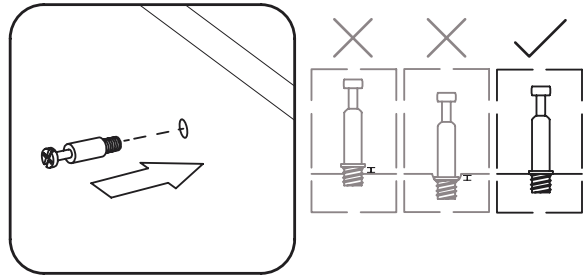
How to use cam locks

Did you know?

Cam locks are used to join two panels together, usually the edge of one to the flat side of another.

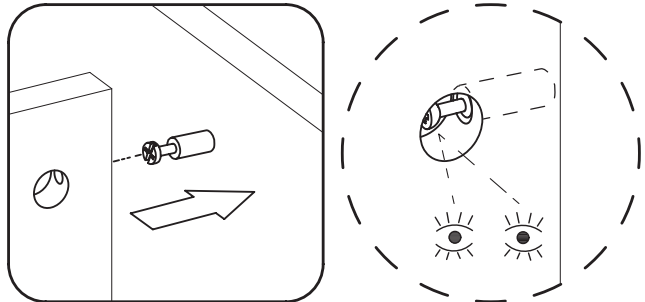
First, your cam bolt (or cam pin) will need to be properly inserted into the flat side of the board.

Important Note: Only tighten the cam bolt until it is secure. Do not over-tighten.



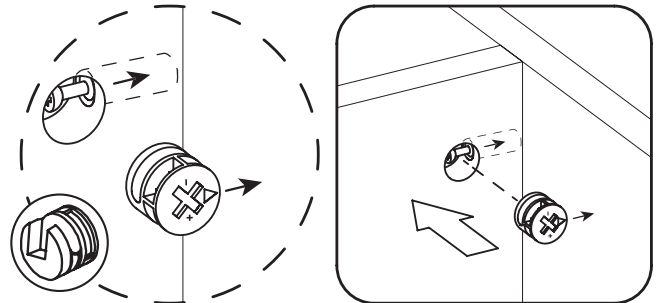
Next, you will fit the proper hole on the edge of the associated joining panel over the cam bolt.

Important Note: When installed properly, the head of the cam bolt will be visible through the larger hole on the side of the joining panel.



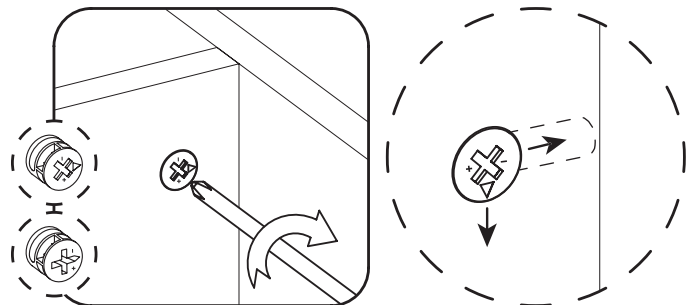
Next, you will notice the cam lock has a “C” shaped back. Commonly, an arrow on the front of the cam lock points in the same direction as the open section on back.

Using these as your cue, insert the cam lock into the large hole so the opening of the “C” fits over the head of the cam bolt.



Using a screwdriver, you will turn the cam lock until it stops, usually at 90° or 180°. You will feel the panels pulling closer until they are secured.

Important Note: Only turn the cam lock until the panels are fully engaged & feel secure. Turning too far may lead to hardware failure.



Still having issues?

If a cam lock seems to be spinning in place or is not “catching” or pulling the panels together as expected, first remove the cam lock & try again while making sure that everything is properly positioned & oriented.

If you are still having issues getting things working as expected, first remove the cam lock then unscrew the cam bolt slightly (less than 1 complete turn) to see if that helps with the alignment of the cam lock & bolt.

Step 3

Don't put your screwdriver away quite yet! Use the Cam Locks (2) and Wooden Dowels (3) to secure the Right Back Panel (E) to the Right Side Panel (B)

Flip back to Page 7 if you need a refresher on how to use cam locks.



2

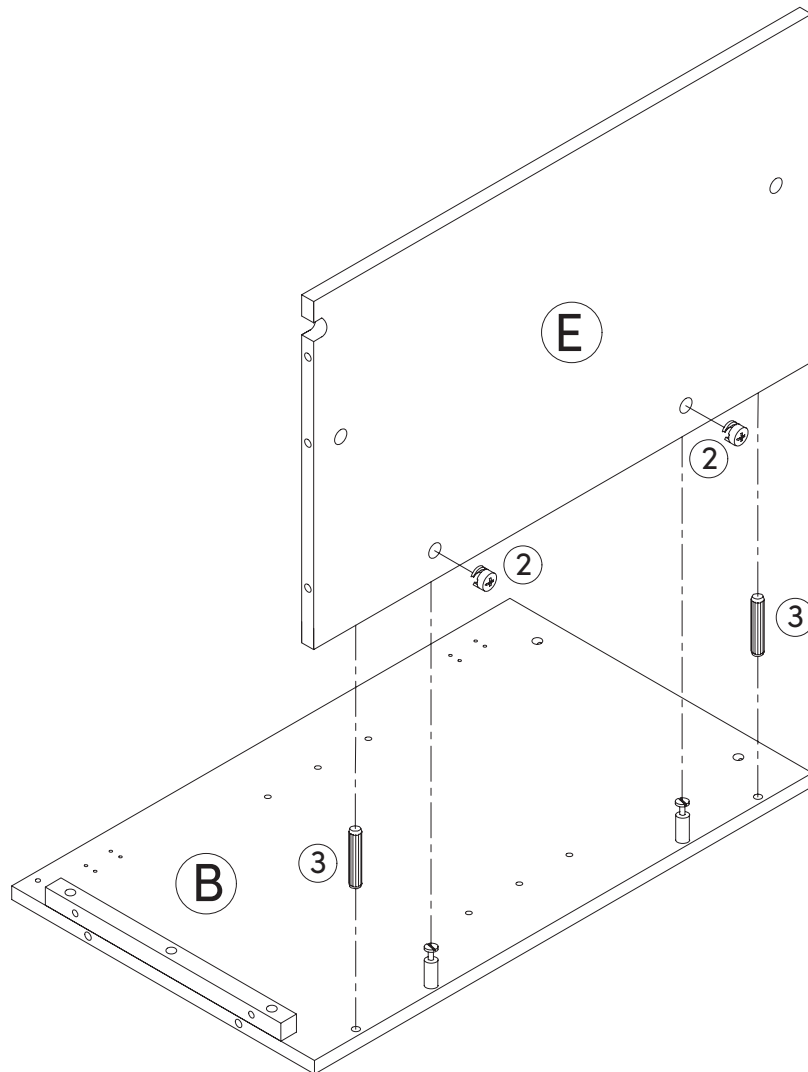


x2

3



x2



Step 4

Now secure the panels (B) and (E) from Step 3 to the Top Panel (A). Tighten to 75%!



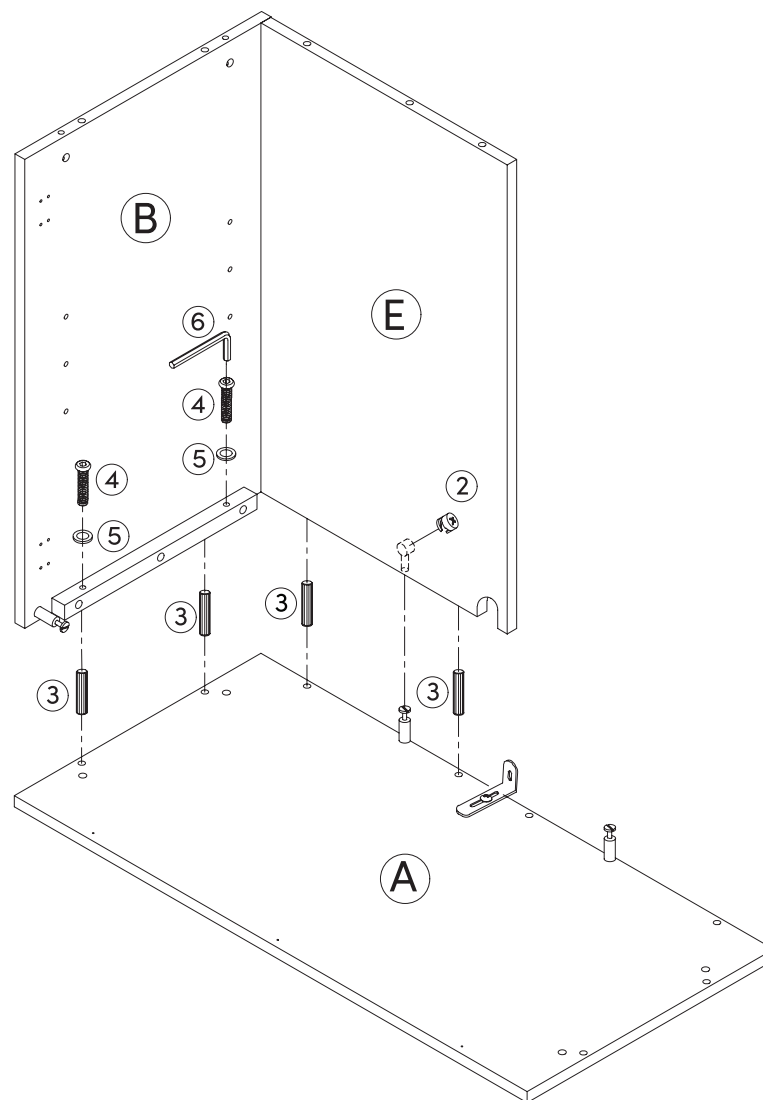
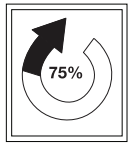
x1



x4

 x^2 

x2



Step 5

No, this isn't Deja Vu! Now secure the (D) and (C) panels to the Top Panel (A). Tighten to 75%!

2



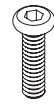
x1

3



x4

4

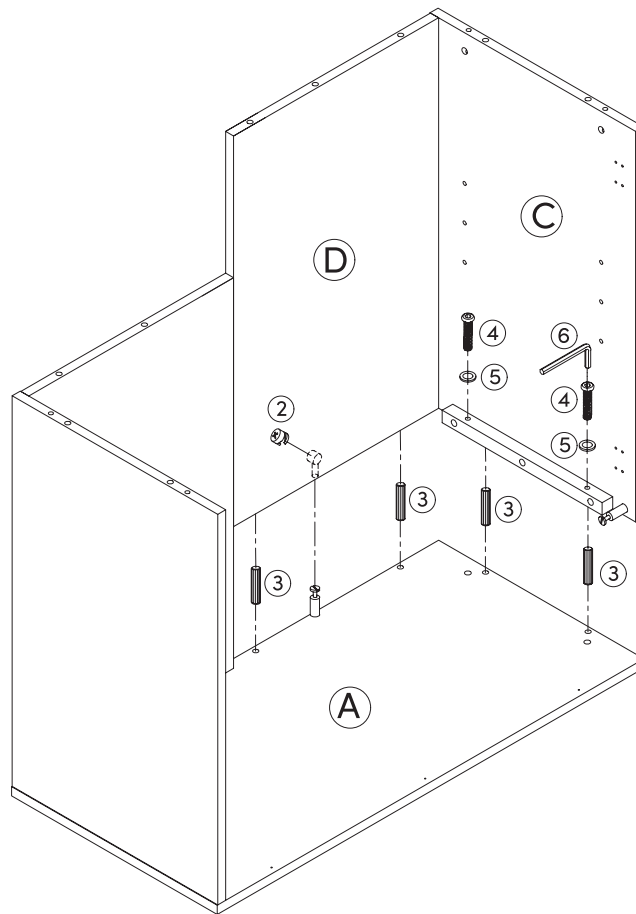
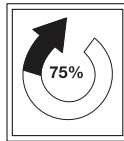
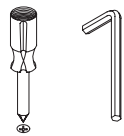


x2

5

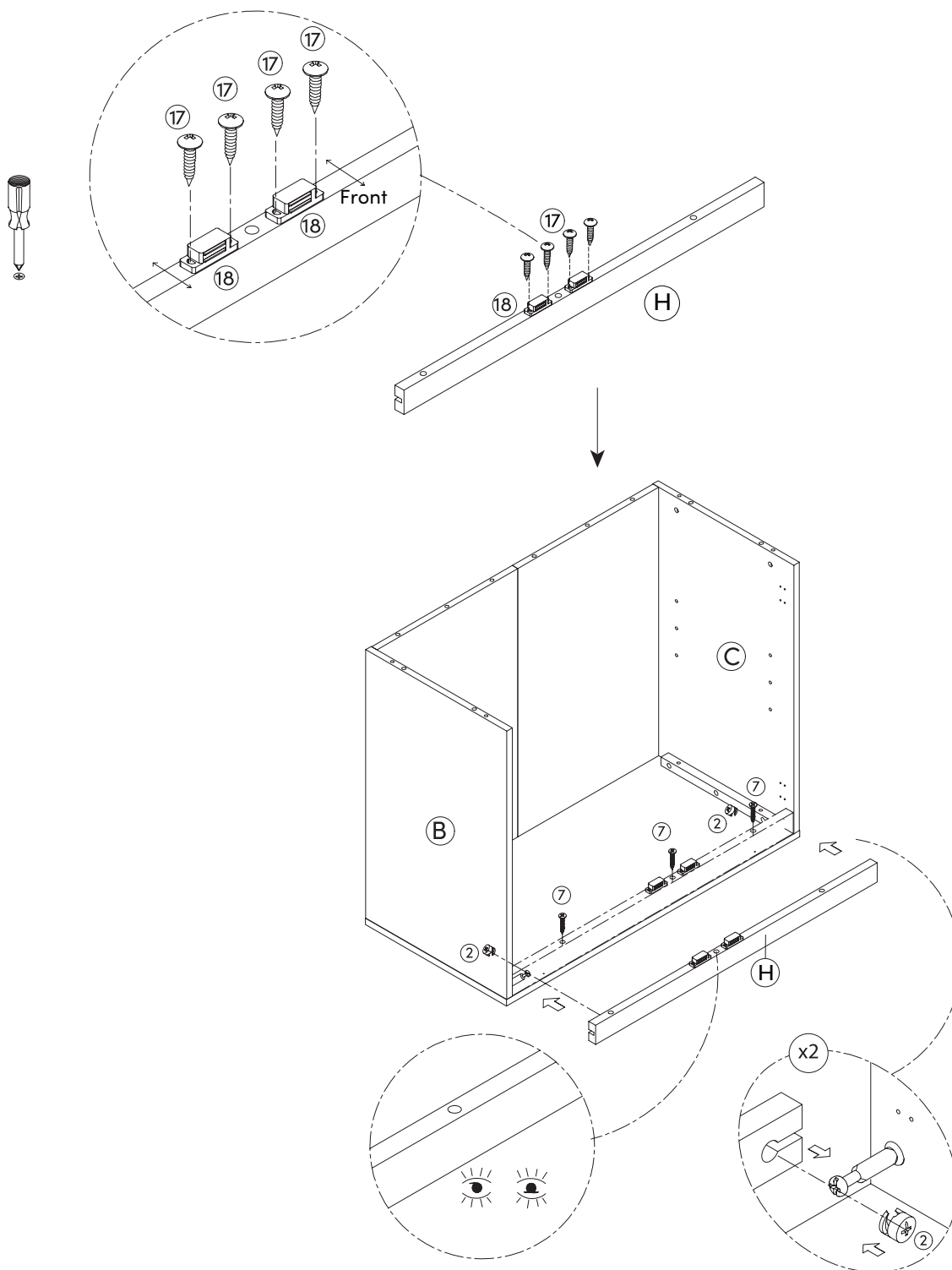
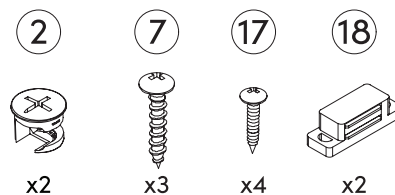


x2



Step 6

Secure the Magnetic Catches (18) to the Top Front Stretcher (H) using the M3*15mm Screws (17).
Then, secure the Top Front Stretcher (H) to the unit with the Cam Locks (2) and M4*35mm Screws (7).



2

3



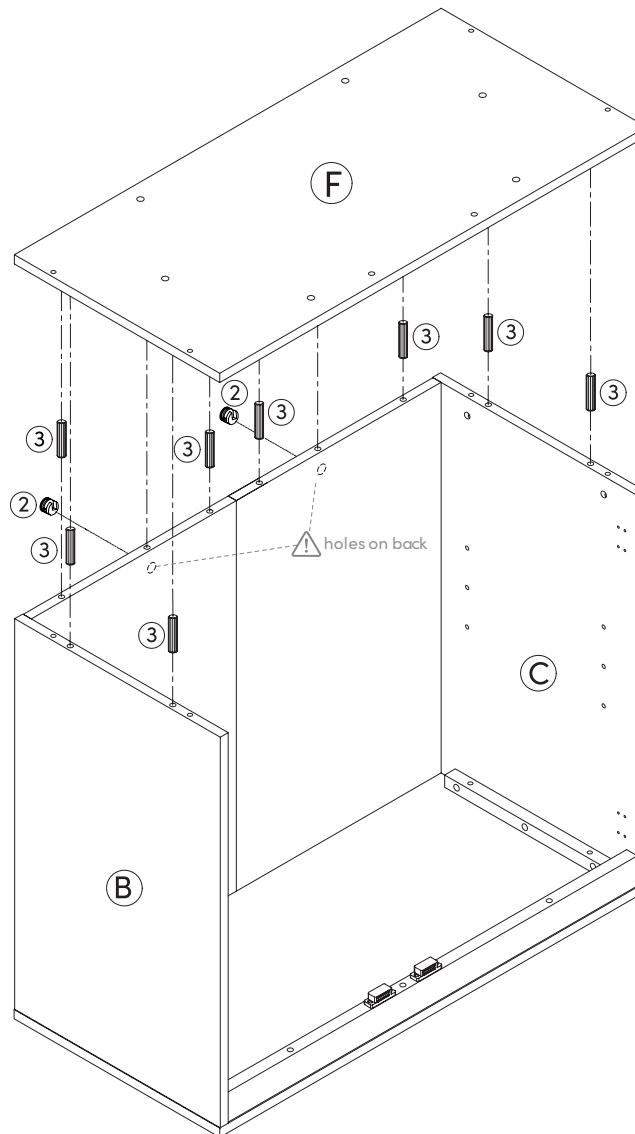
x2



x8

Step 7

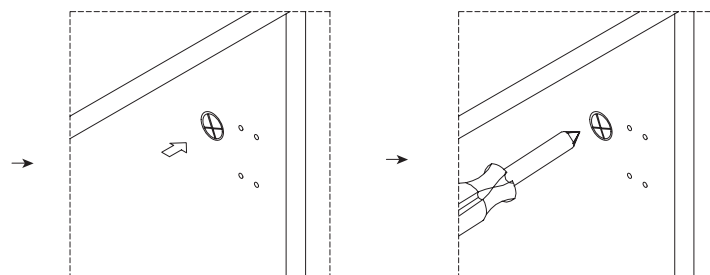
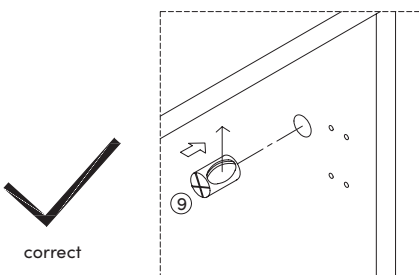
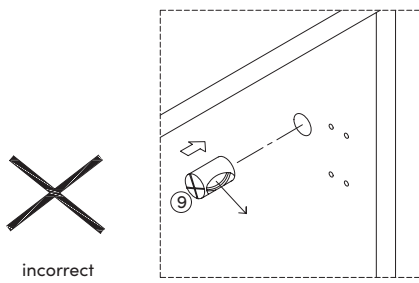
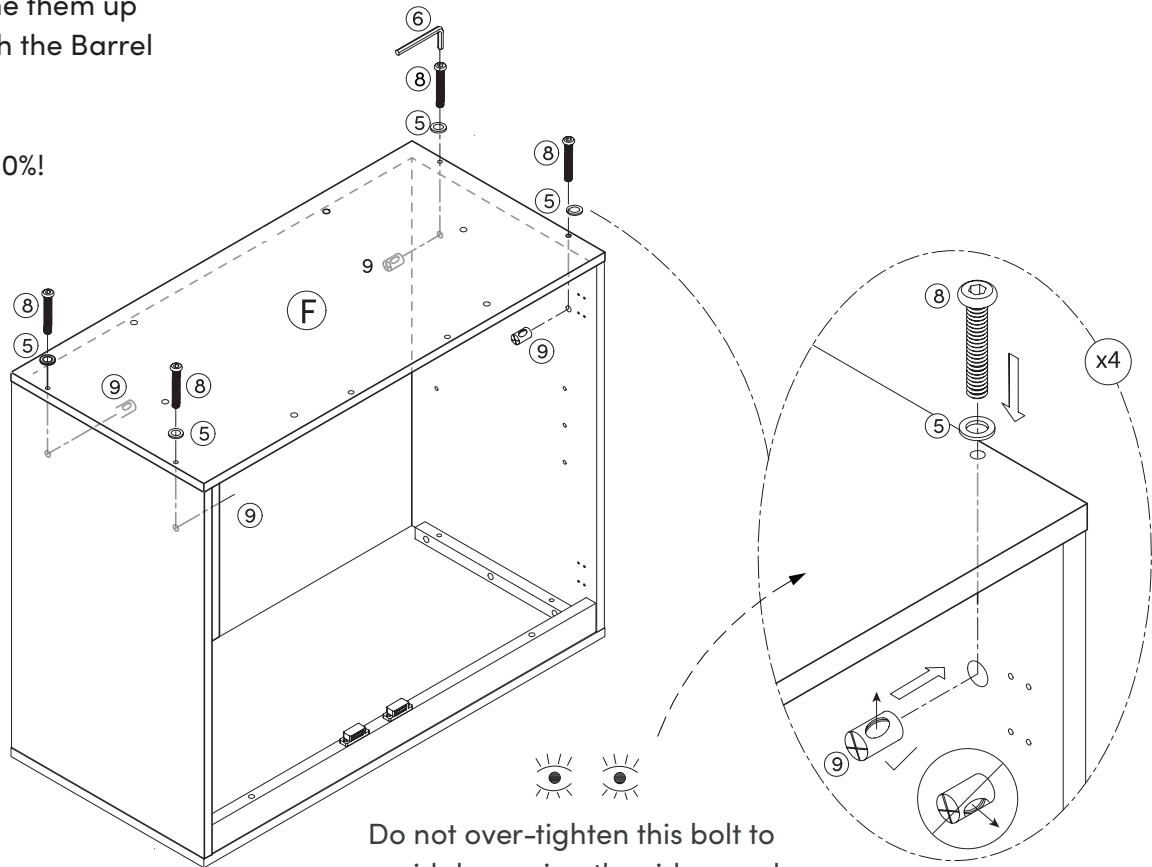
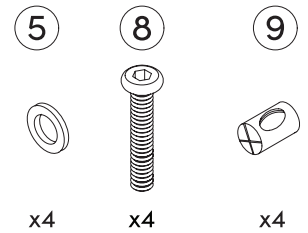
This is the last step with cam locks, we promise! Join the Bottom Panel (F) to the unit you've assembled so far using the Wooden Dowels (3) and Cam Locks (2).



Step 8

Get the Bottom Panel (F) secured using the Flat Washers (5) and Hex Button Head Bolts (8) - be sure to line them up correctly with the Barrel Nuts (9).

Tighten to 100%!



Helpful Tip:
If the Bolt (8) isn't lining up with the Barrel Nut (9) properly, use a screwdriver to slightly turn the Barrel Nut (9) into place.

Step 9

Attach two the Short Apron (J) to the Long Apron (I) by inserting Wooden Dowels (3) into the pre-drilled holes. Using the Hex Button Head Bolts (4), and Flat Washers (5) to fasten the panel.

3



x4

4

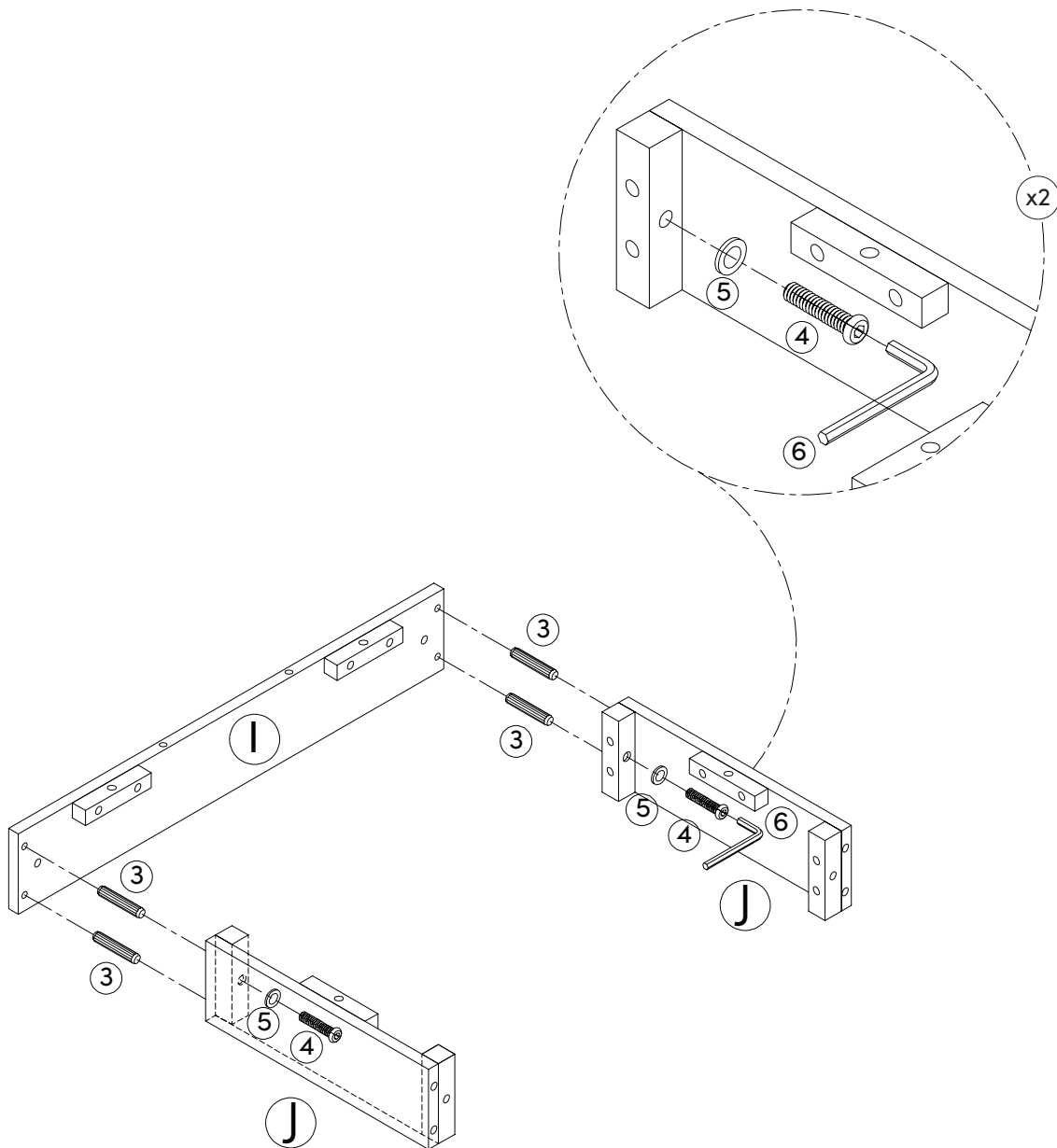


x2

5



x2



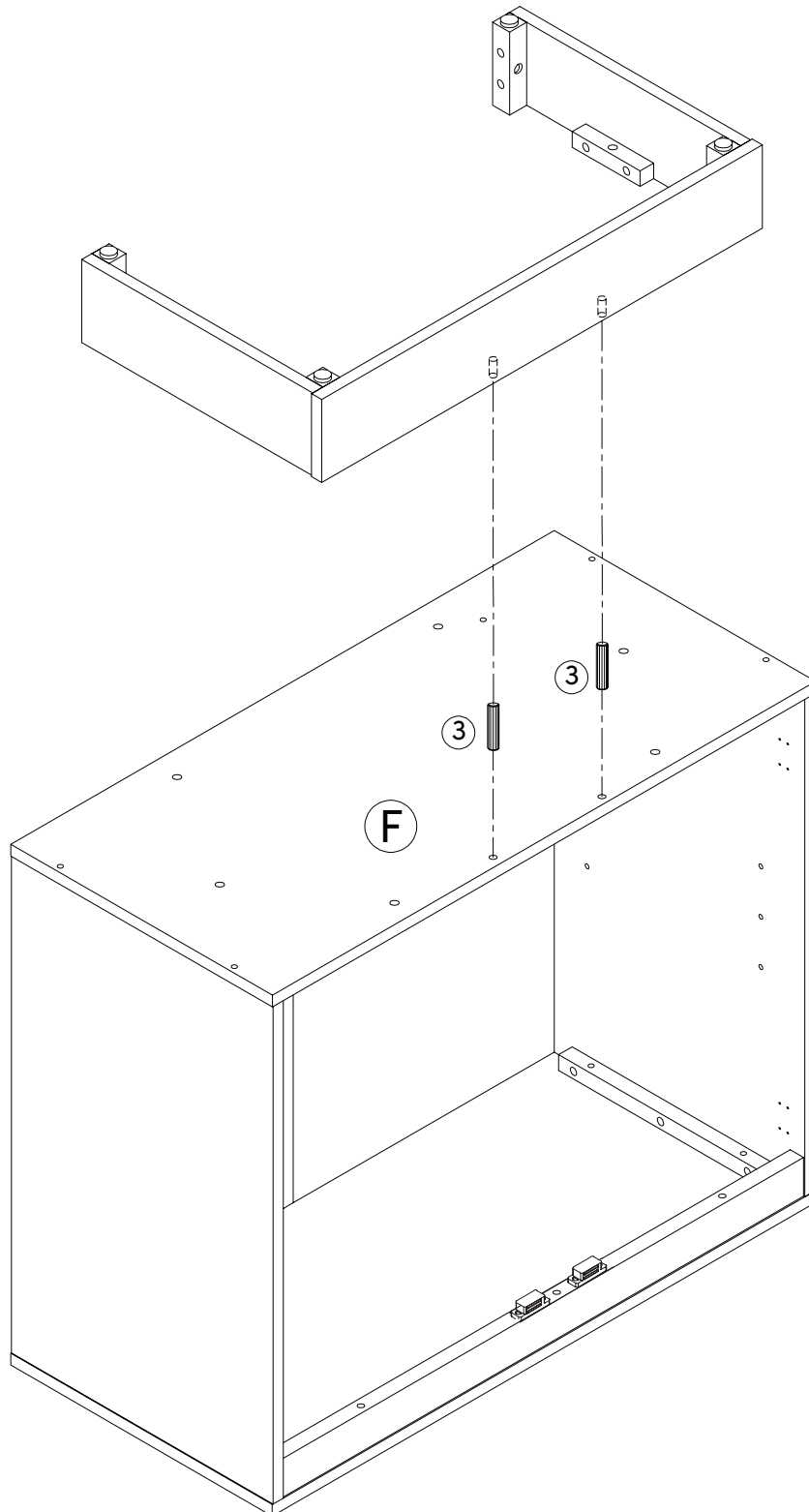
Step 10

Next, set the pieces that you assembled in Step 9 into place on the Bottom Panel (F) by inserting & aligning the Wooden Dowels (3) in their respective pre-drilled holes.

3



x2



Step 11

Secure using the Flat Washers (5) and Hex Button Head Bolts (4).

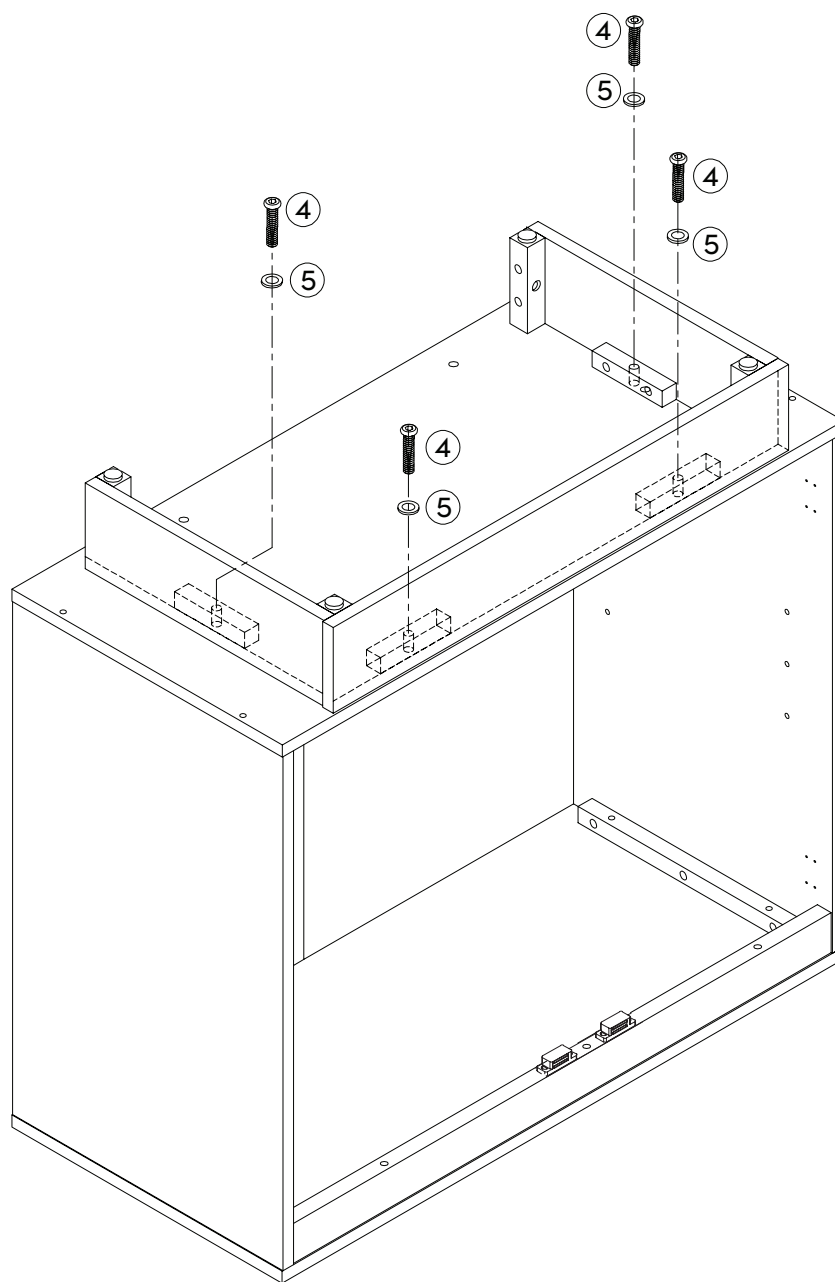
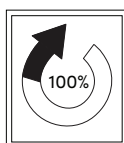
4



5



Tighten to 100%!



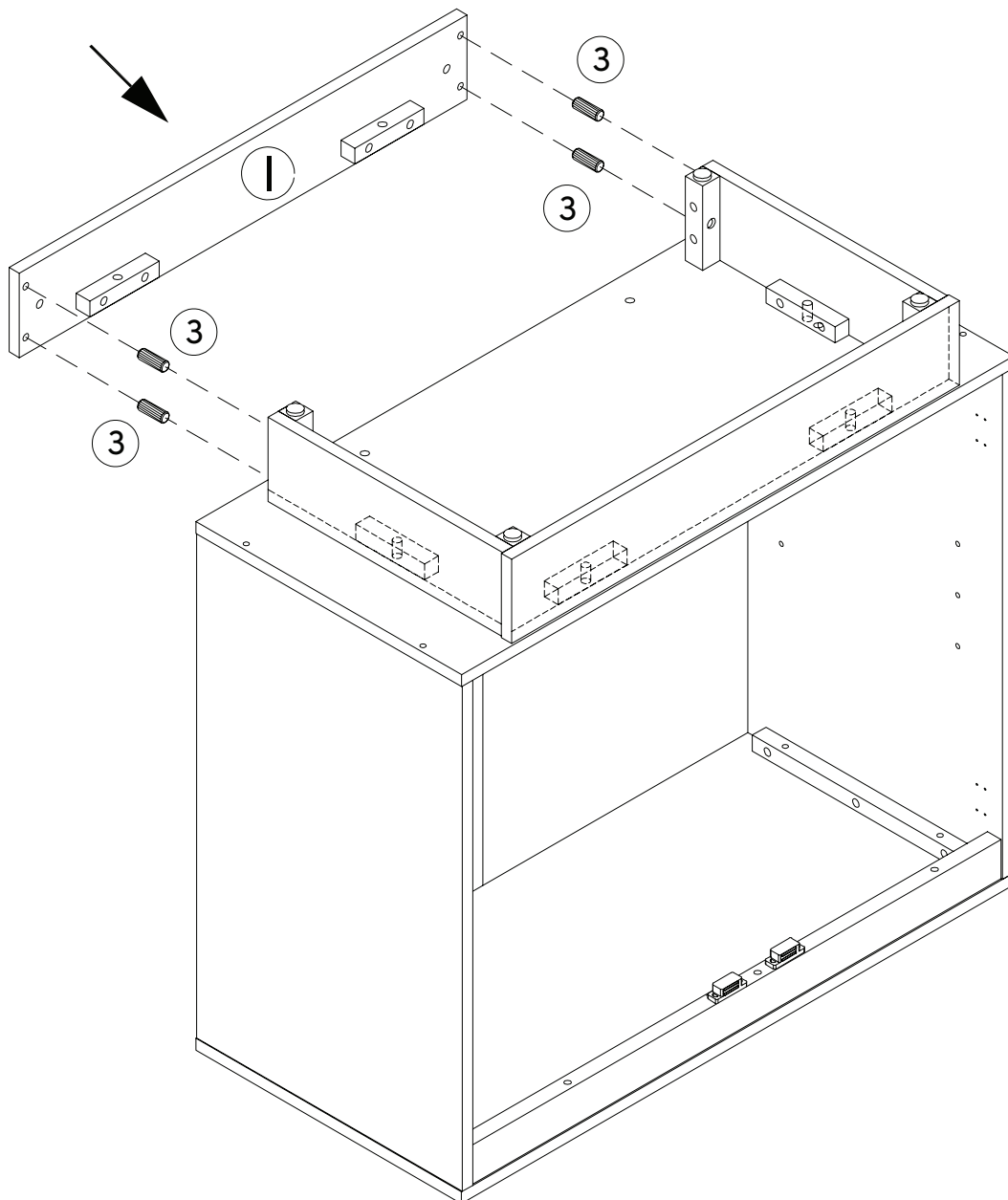
Step 12

Insert the Wooden Dowels (3) into their respective holes to help align the Long Apron (I) with the pieces that you just secured in Step 11.

3

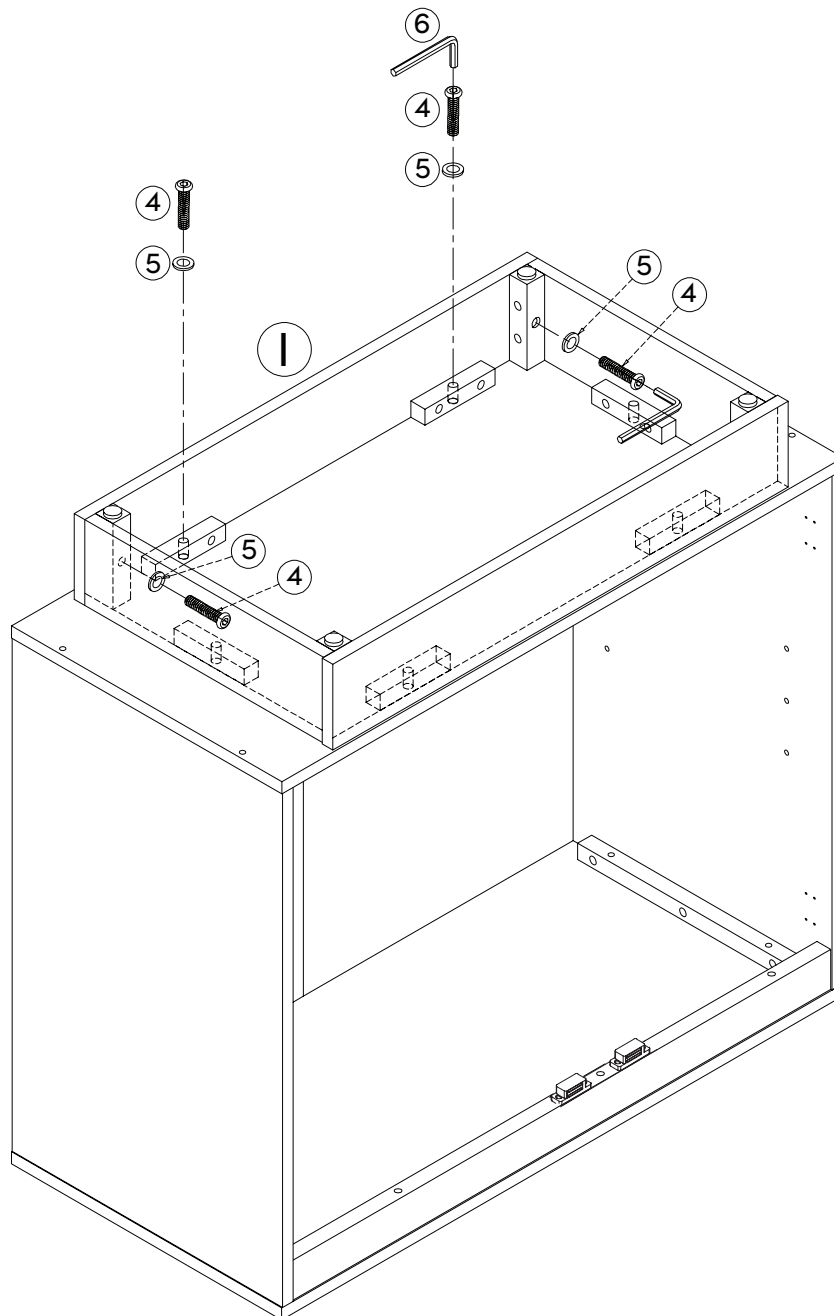
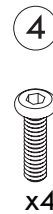


x4

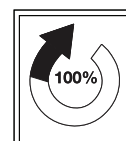


Step 13

Secure using the Flat Washers (5)
and Hex Button Head Bolts (4).

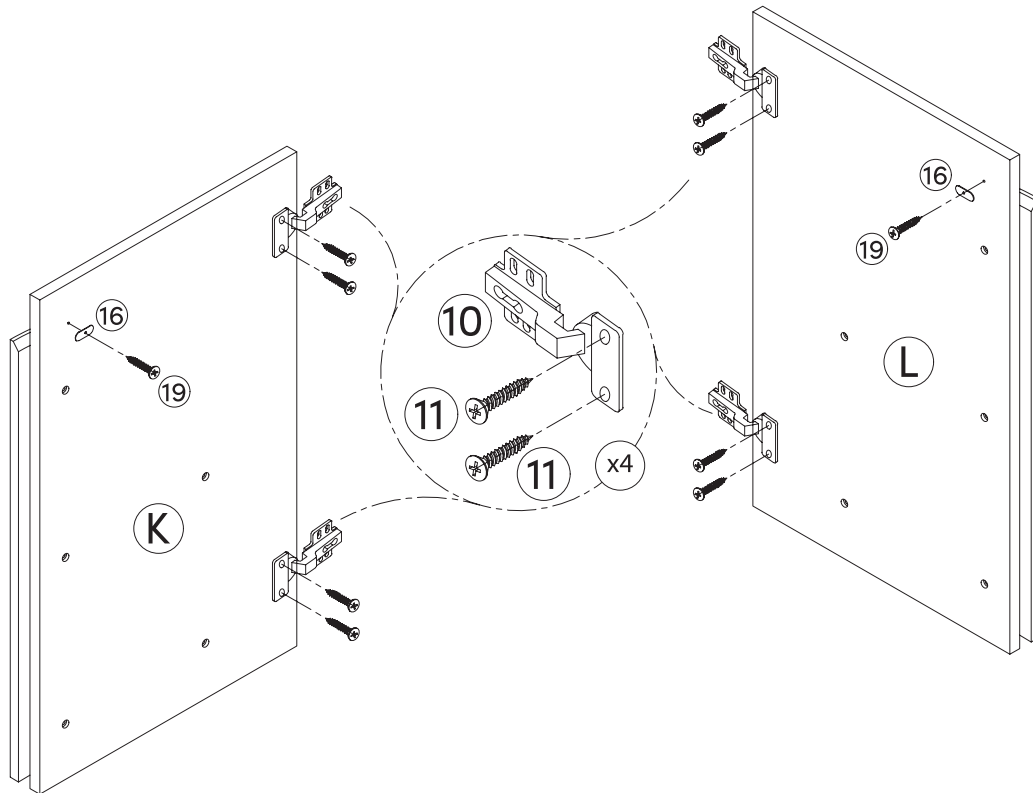
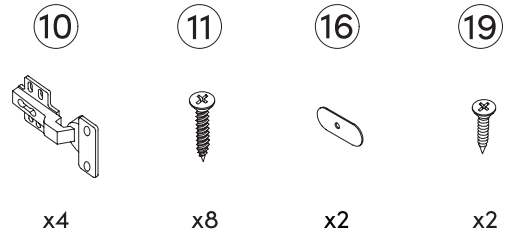


Once everything is lined up and partially
secured, go ahead and re-tighten all
previous connections to 100% tighten.



Step 14

Shut the front door - you're only five steps away from being done. Speaking of doors - grab the Left (K) and Right (L) doors and secure the four Hinges (10) using the Screw (11). Secure the Door Catch Plate (16) to the tops of the doors, using the Screw (19).



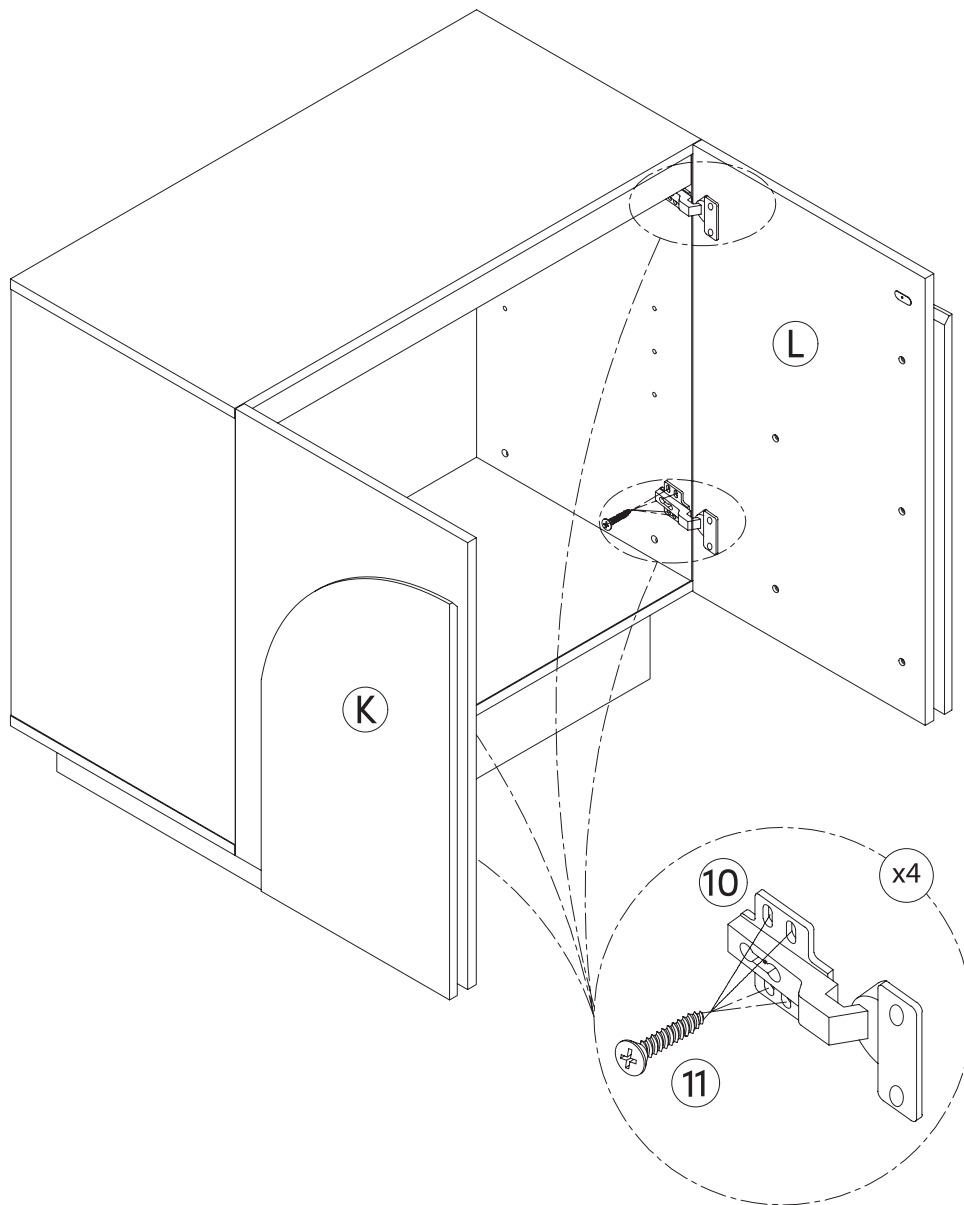
Step 15

It's all coming together!
Secure the doors to the
unit by the Hinges using
the M3.5*15mm Screws (11).

11



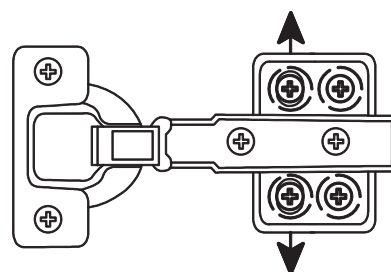
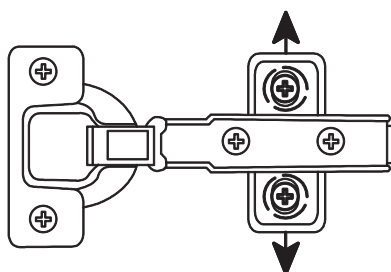
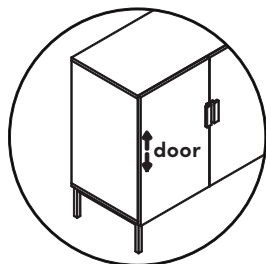
x16



Is your cabinet door looking crooked or unevenly spaced?

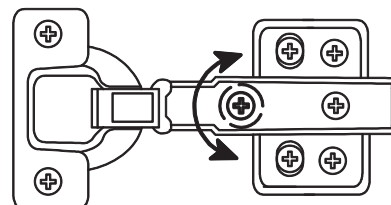
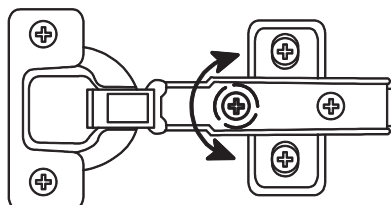
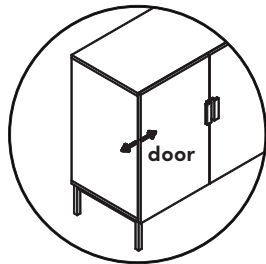
Then you've come to the right place. Follow the illustrations below to get your cabinet door aligned and ready for action.

If your door is too low or too high...



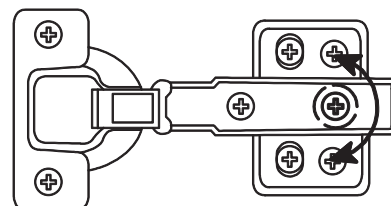
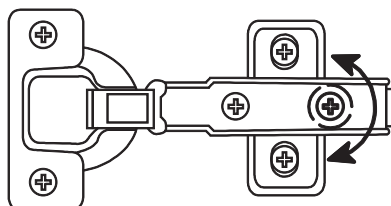
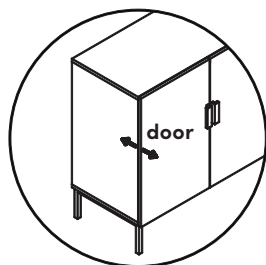
Loosen the height screws, then move the door up or down to make it level.

If the space between your doors is off...



Loosen the side-to-side screws, then screw counter-clockwise to make the gap wider or clockwise to close any gaps.

If you need to adjust the depth of the doors...



Adjust the in-and-out screws until the door is aligned with the side of the cabinet.

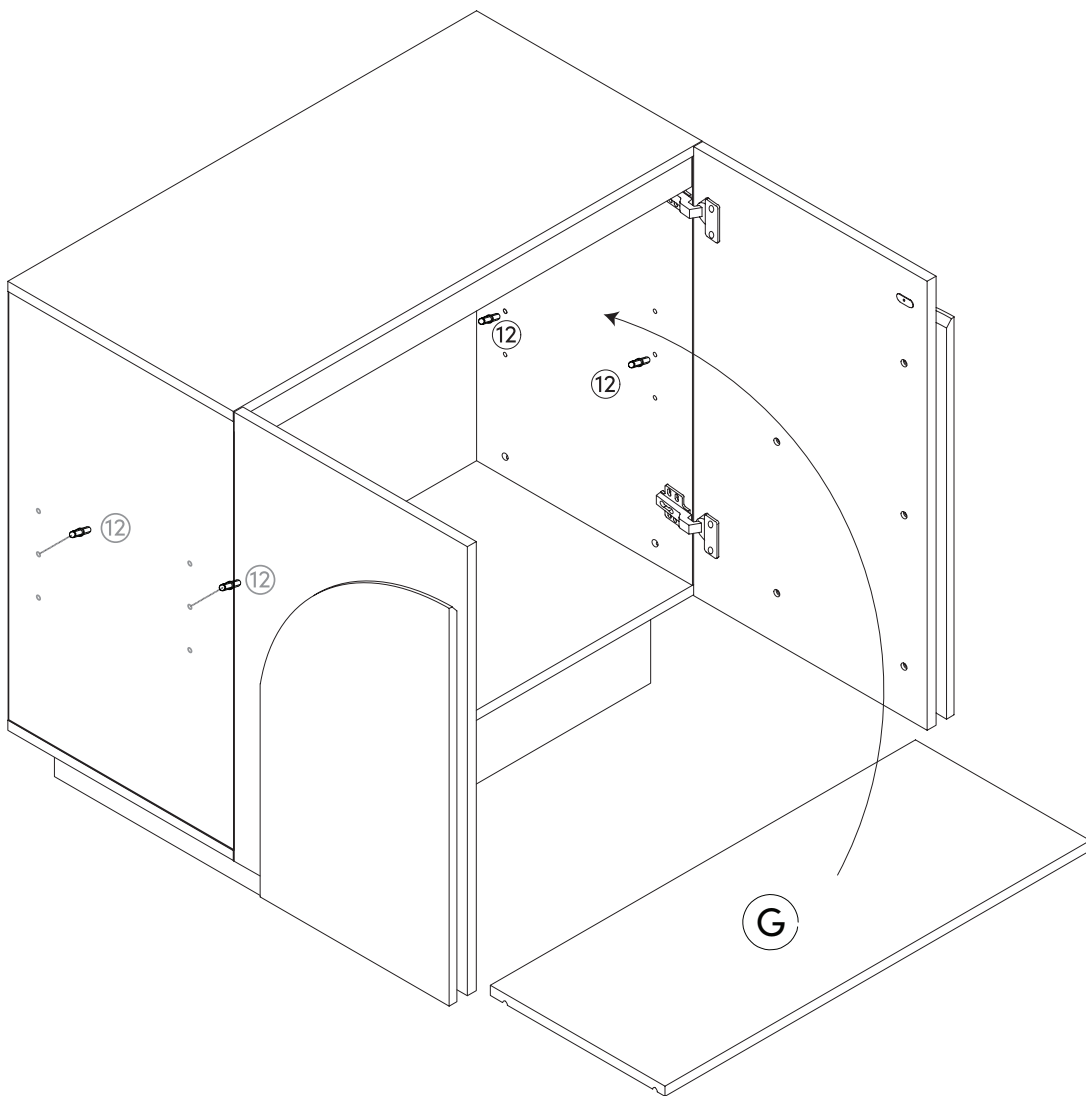
Step 16

Place the Shelf Pins (12)
at your desired shelf
height and carefully slide
the Shelf (G) to rest on
top of the pins.

12

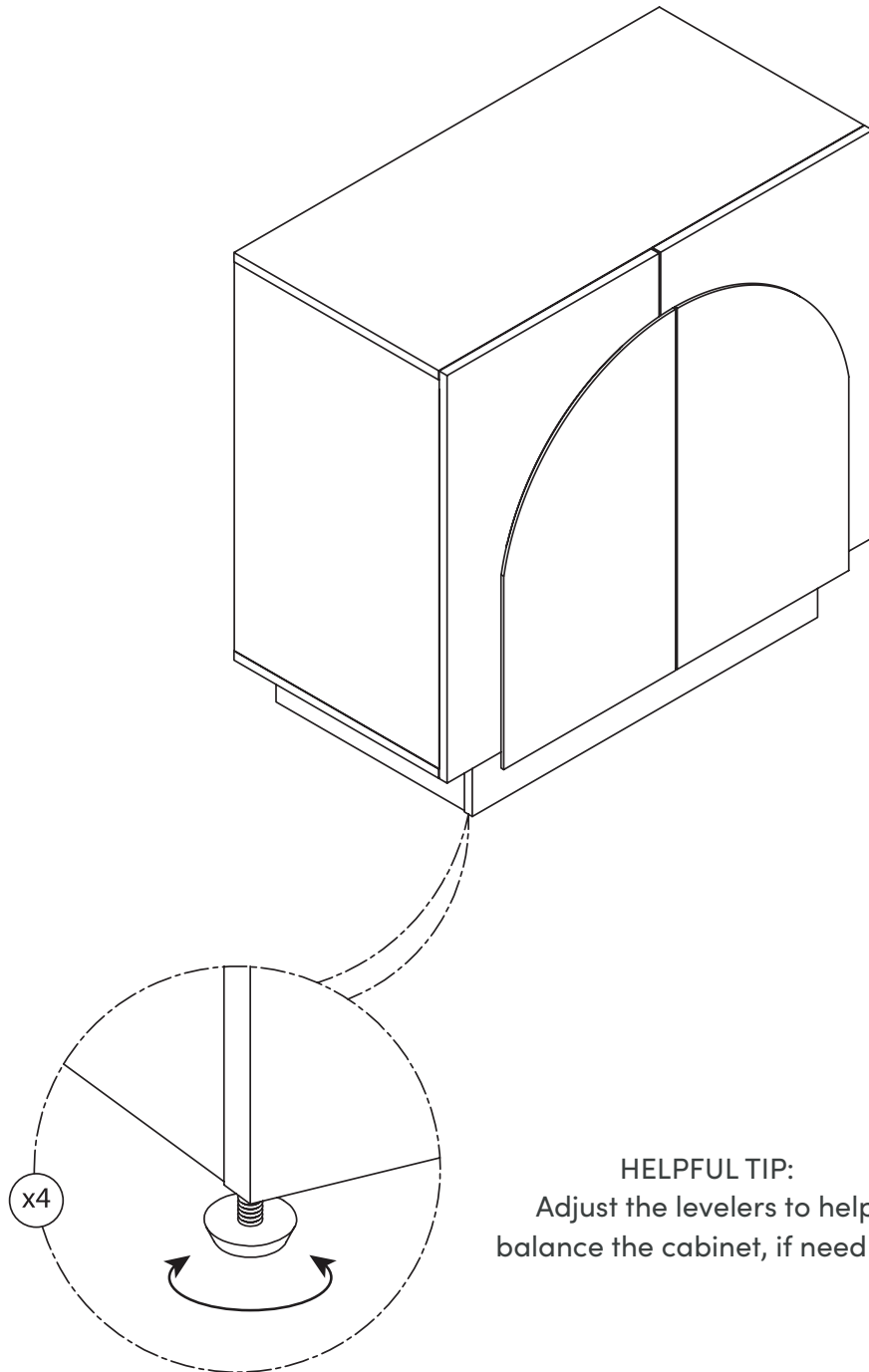


x4



Step 17

Time for the finishing details!

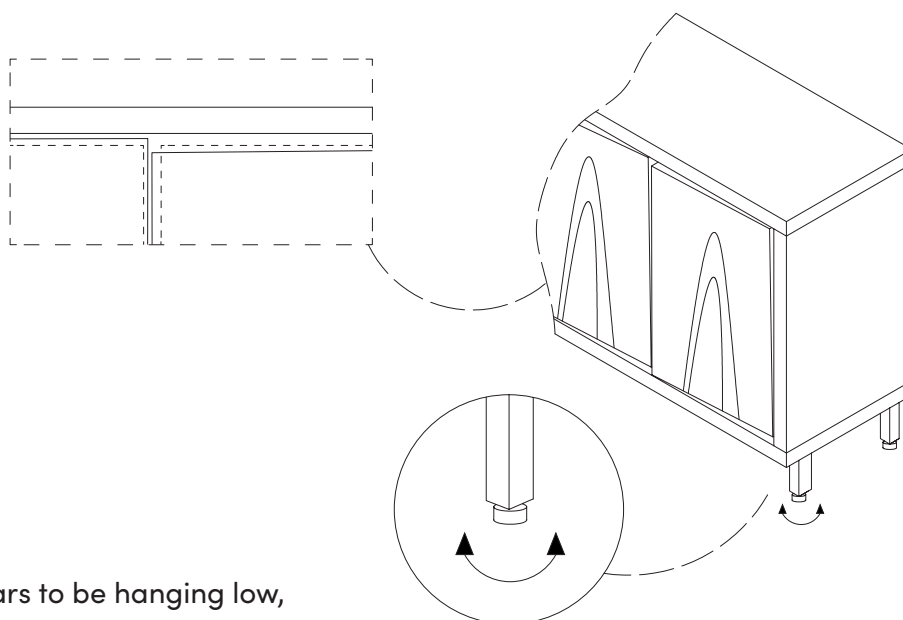


HELPFUL TIP:
Adjust the levelers to help
balance the cabinet, if need be.

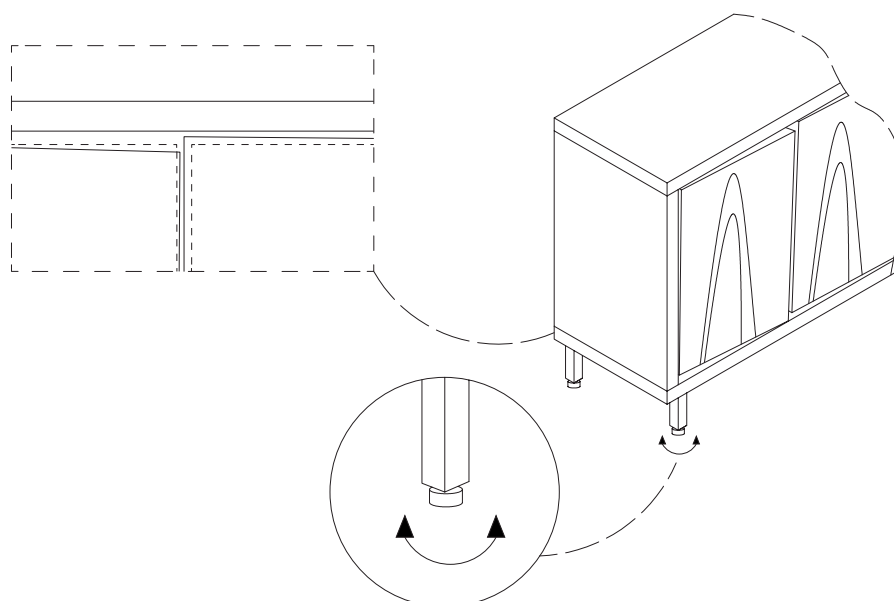
Is your cabinet door looking crooked or unevenly spaced?

If you're still having trouble lining everything up, your next step should be to try to adjust the feet slightly to square up the cabinet & doors. Follow the illustrations below:

If the right door appears to be hanging low, you can adjust the adjustable leveler on the front right until the door is better aligned.



If the left door appears to be hanging low, you can adjust the adjustable leveler on the front left until the door is better aligned.



Step 18

Safety first! Start by drilling a hole in the wall using a 1/4" drill bit and pushing a Wall Anchor (13) into the hole. Then, secure the storage unit to the wall by screwing in a M4*35mm Screw (7) through the Anti-Tip Bracket you installed all the way back from Step 1 and into the Wall Anchor (13).

13



x1

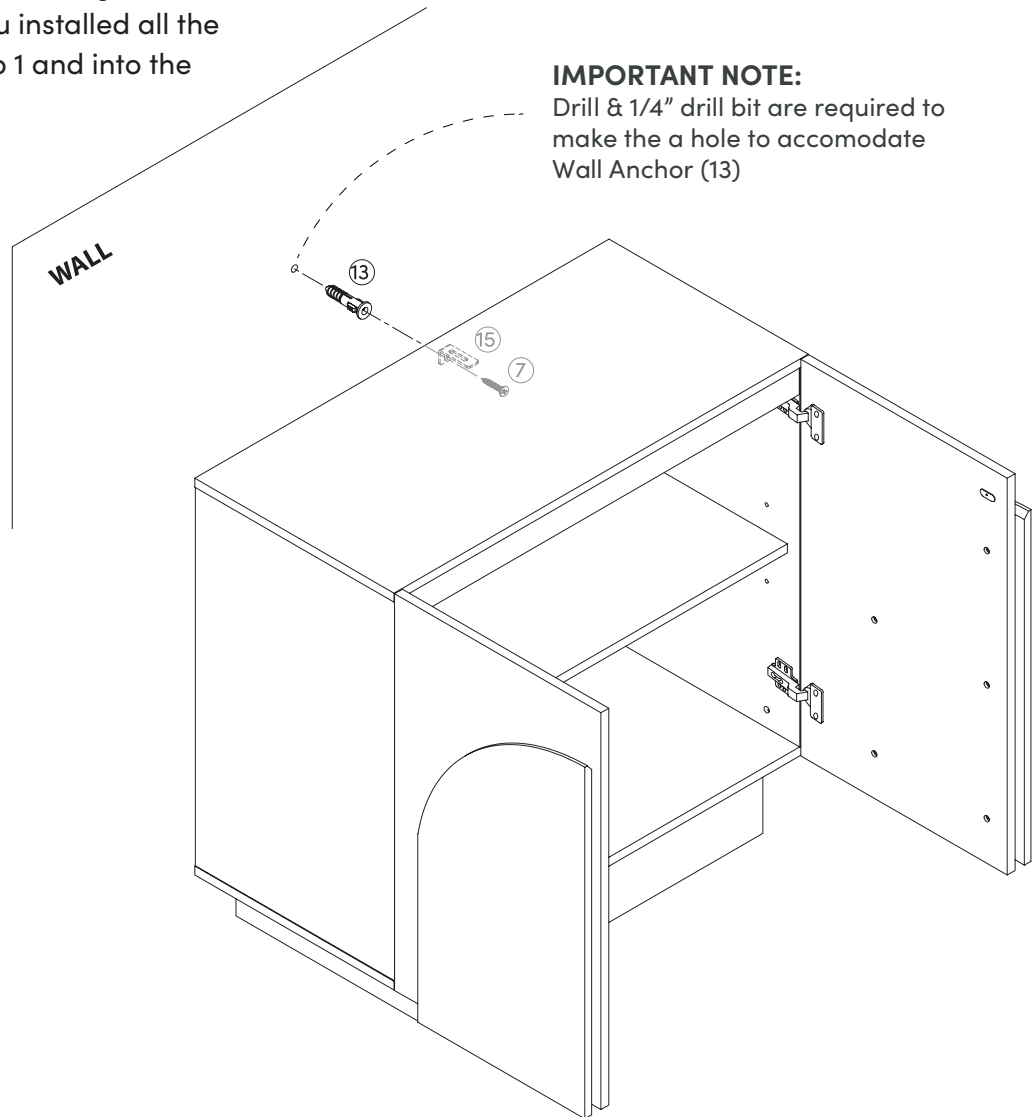
7



x1

IMPORTANT NOTE:

Drill & 1/4" drill bit are required to make the a hole to accomodate Wall Anchor (13)



Cue the party music!

You did it!

IMPORTANT NOTE:

Young children (and/or pets) can be seriously injured by tipping furniture units.

You must install the provided anti-tip kit hardware solution, as instructed, to prevent the furniture units) from tipping over - which could possibly lead to injuries or damage.

The provided anti-tip kit hardware solution is intended only as an additional safety measure & deterrent; it is not a substitute for proper adult supervision.

The provided anti-tip kit hardware solution is not an earthquake restraint. If you wish to add the extra security of earthquake restraints, they must be purchased & installed separately.

No heartburn, when we handle the return

Give us a call **1-866-619-1004** or shoot us a message
at **help@nathanjames.com** we will issue you a free
replacement with **zero hassle**.

Our way



Give us a call



Replacement



You

Their way



Re-package item



Schedule pick up



Track package



Replacement



You

We really don't want you to go through the hassle of re-packaging your item
and sending it back, because let's be honest...nobody has time for that.

Safety first, fun later

We want your product to last as long as possible, so we recommend that you tighten the screws 2 weeks after assembly and for added safety check the tightness of all screws every 2 months.

For proper care and treatment, please check our website at **NathanJames.com/products**

Safe use of this product starts with you.

Use this product responsibly with the primary concern for your safety. Follow assembly instructions carefully and inspect product upon receipt and each use.

Nathan James and its parent companies cannot be held legally responsible for any injuries or death resulted from failure to follow instructions or improper use of this product.

Do not modify the structure of this product in any way.

Our products have been tested to meet specific safety measures as they were originally intended to be sold. Any modifications will present the risk of creating significant safety issues which NJ will not be responsible for.

Proper use

- | | |
|---------------|--------------------------------------|
| DO NOT | use for commercial purposes |
| DO NOT | frolic on storage unit |
| DO NOT | use storage unit as foot stool |
| DO NOT | leave spilled liquid on storage unit |
| DO NOT | use if damaged |
| DO NOT | make temporary repairs |
| DO NOT | use outdoors |

We are only in business if you're happy

For starters, thanks for being you.

☎ Toll-free at 1-866-619-1004

✉ Help@nathanjames.com

🌐 NathanJames.com/help

We do our best to ensure your furniture arrives without any problems, but occasionally mistakes happen—as humans we are imperfect beings. In the event that a part is damaged or missing, we will be more than happy to provide you with replacement part(s) for free.

Lifetime Guarantee

We believe in making things that last. That's why every product is backed by our Lifetime Guarantee. No hidden clauses. No runaround. If it breaks, we'll replace it—plain and simple. This isn't just a promise—it's our commitment to quality, and to you.

This product comes with a Lifetime Guarantee from the date of purchase. Please use your phone to scan the QR code on the cover of this booklet to register your product or visit <https://goo.gl/i9dk3q>



Did we do alright? Please spread the love!

If you are happy with your product, tell your friends and family about us or even better leave us a review online. Spreading the word gives us the opportunity to make more people happy and keep our prices low for your next purchase.

Brooke Burdon

Founder, Nathan James