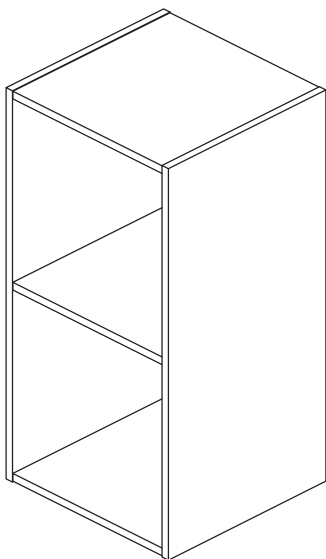


ASSEMBLY INSTRUCTIONS



TOOLS REQUIRED



Philips Screwdriver

(Not Included)



Power Tool

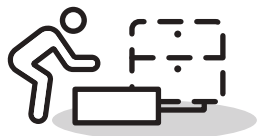
(Not Included)



2 - People Recommended

BOOKCASE

PRE ASSEMBLY INTRODUCTION



Assemble near the area of the intended location.



Make sure you have enough space to move around.



Use cardboard or blankets to prevent scratches.



Ensure the furniture rests on a flat and level surface.

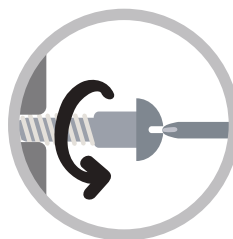
ASSEMBLY AND CARE ADVICE



FAILURE TO FOLLOW THE GUIDELINES BELOW MAY RESULT IN INJURY AND/OR PROPERTY DAMAGE.



Position each part correctly and insert screws or bolts into their respective holes.

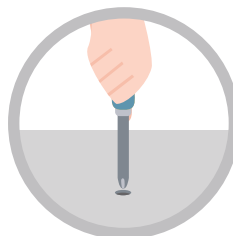


Turn clockwise to tighten and only tighten when step is completed or when instructed to do so.



Use the appropriate hand tools or power tools for assembly.

Select steps, such as tightening screws and/or bolts, may require hand tools to avoid causing damage during assembly.



After two weeks, check and tighten any loose hardware and repeat again every six months thereafter.

ASSEMBLY INSTRUCTIONS

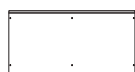
PARTS

A 2PCS



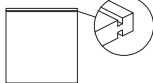
Top & Bottom
Panels (single-edge
groove)

B 2PCS



Side Panels

C 1PC



Shelf
(double-sided grooves)

D 2PCS



Back Panels

HARDWARE

① 12PCS



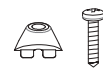
② 4PCS



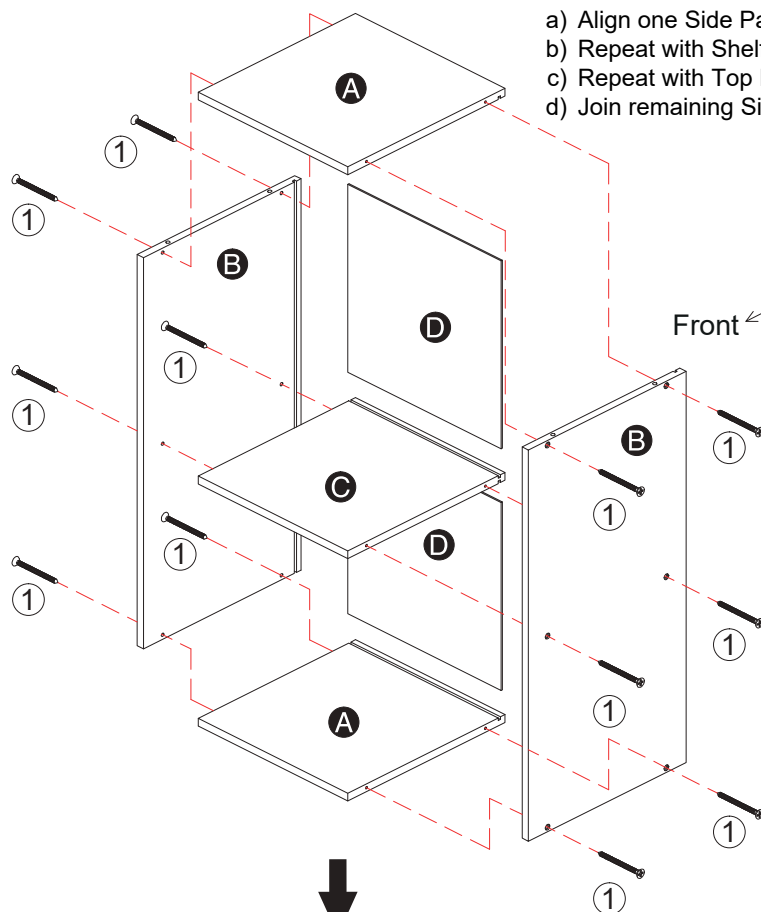
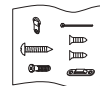
③ 16PCS



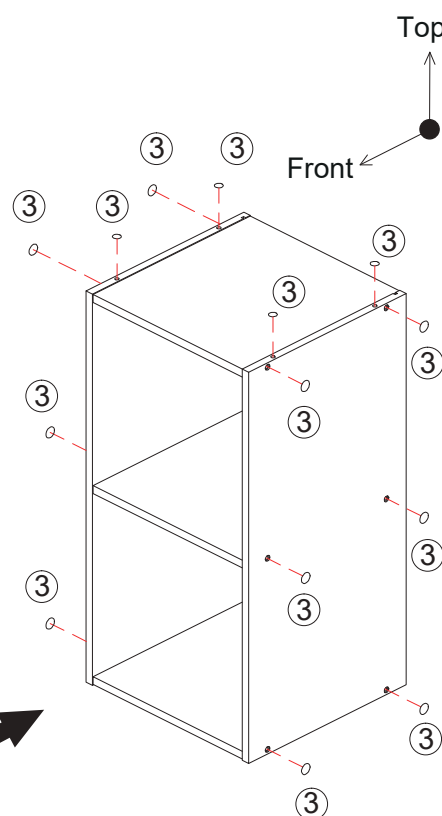
④ 6SETS



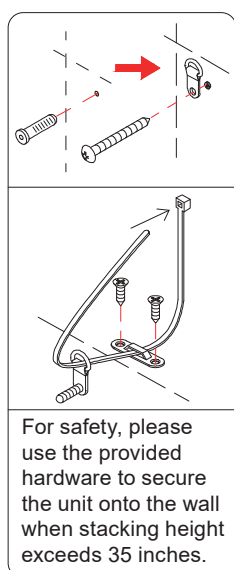
⑤ 1SET



- Align one Side Panel (#B) with Bottom Panel (#A). Secure with screws (#1).
- Repeat with Shelf (#C). Slide in one Back Panel (#D).
- Repeat with Top Panel (#A) and slide in Back Panel (#D).
- Join remaining Side Panel (#B) and secure with screws (#1).

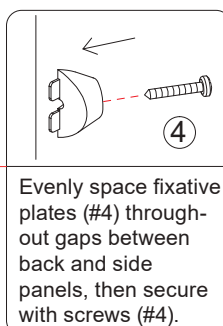


Use provided stickers (#3)
to cover any exposed holes.



For safety, please
use the provided
hardware to secure
the unit onto the wall
when stacking height
exceeds 35 inches.

Top
Front



Evenly space fixative
plates (#4) through-
out gaps between
back and side
panels, then secure
with screws (#4).

X 6

ASSEMBLY
COMPLETED

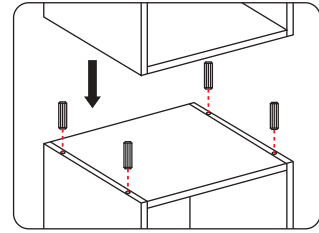


Safety Measures for Stacking

A maximum of **2** units
can be stacked.

The total stacked
height cannot exceed **70.6"**

The use of wooden dowels and anti-tip hardware is required when stacking height exceeds **35.0"**

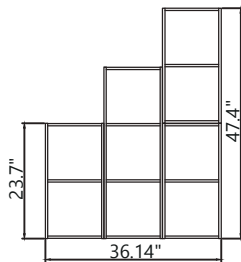


Refrain from drilling holes on your own.

Please make sure to use the pre-drilled holes and dowels (#2) for stacking.

Mix, Match & Stack

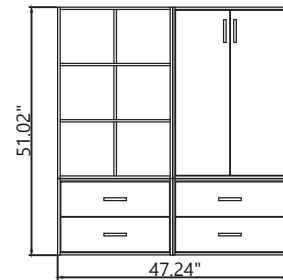
This item can be stacked with other compatible pieces in the collection. Configurations shown may include multiple units, which are sold separately unless otherwise stated.



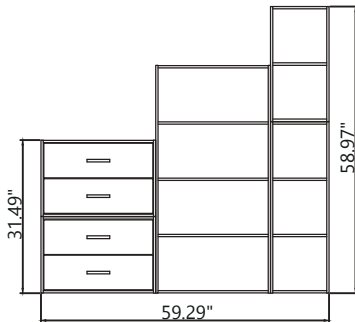
2S
2S · 3S · 2S



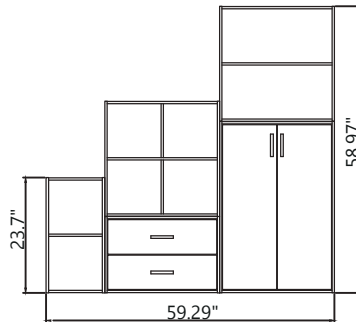
4S · 2L
2D · 2D



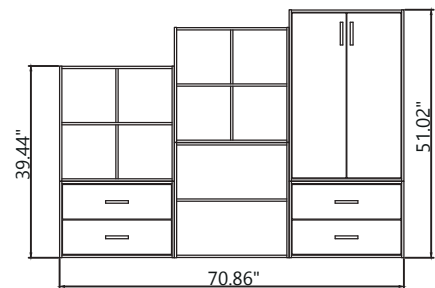
6S · DC
2D · 2D



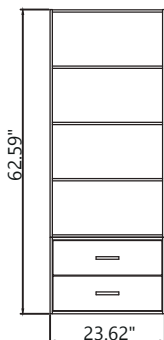
2D 2S
2D · 4L · 3S



4S · 2L
2S · 2D · DC



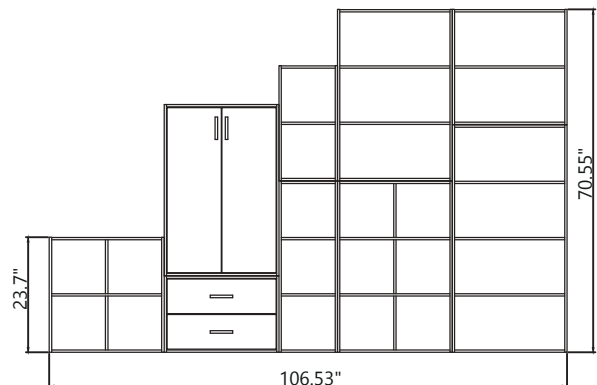
4S · 4S · DC
2D · 2L · 2D



4L
2D



2L · 3L · 4L
2D · 2D · 2D



DC · 2S · 3L · 2L
4S · 2D · 3S · 6S · 4L