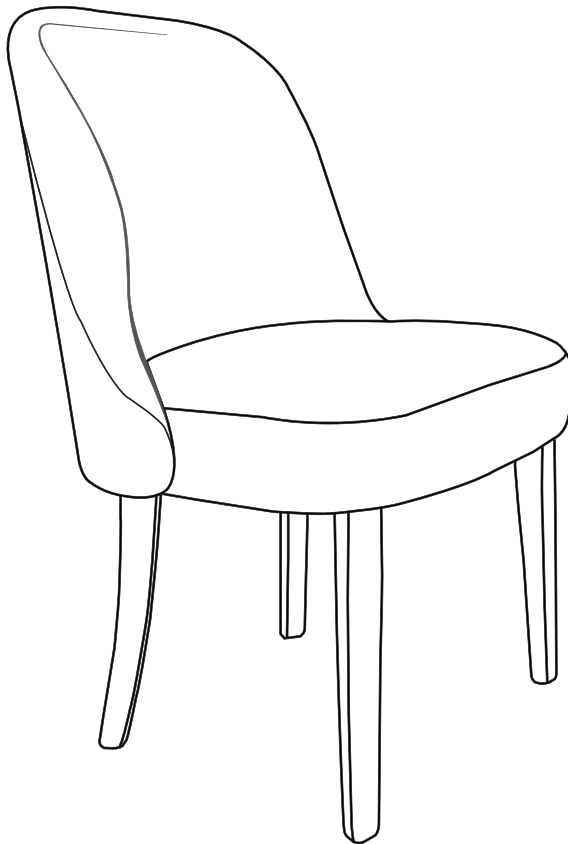


INSTRUCTION MANUAL



**Water and Stain Resistant Boucle Upholstered
Side Chair
SKU: ID306**

V1.0

! NOTICE

- Highly recommend immediate clean of the upholstery fabric although it is treated as water and stain repellent. Clean the chair with lukewarm water, mild detergent & soft cloth.
- Please do not exceed the weight limitation of this item. Do not stand on as a step ladder.
- Firmly secure all bolts before use. Reconfirm all bolts are secure every 90 days.
- Please adjust the speed slowly when you use electric drill for assembling to avoid screw slippage.
- Do not use or store this item in the proximity of open flame or flammable/combustible chemicals.

TOOLS REQUIRED



ALLEN WRENCH
(PROVIDED)



260 LBS
CAPACITY



1 PERSON
ASSEMBLY



UP TO 20 MIN.
ASSEMBLY

HARDWARE

1

Flat washer
Φ8



8 PCS

2

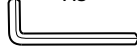
Lock washer
Φ8



8 PCS

3

ALLEN
WRENCH
M8



1 PC

4

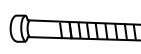
M8 x 55mm
SHORT BOLT



4 PCS

5

M8 x 60mm
LONG BOLT

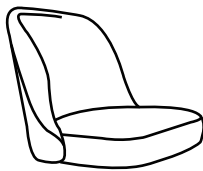


4 PCS

PARTS

A

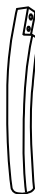
SEAT



1 PC

B

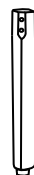
HIND LEG



2 PCS

C

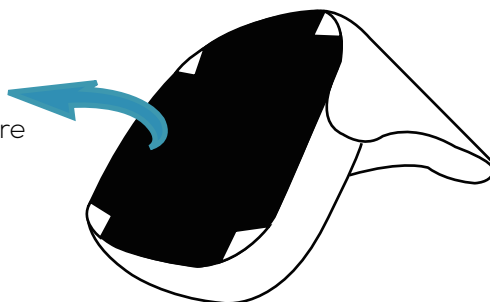
FRONT LEG



With 2pcs
adjustable
feet leveler

2 PCS

Open the black fabric cover
and take out legs and hardware



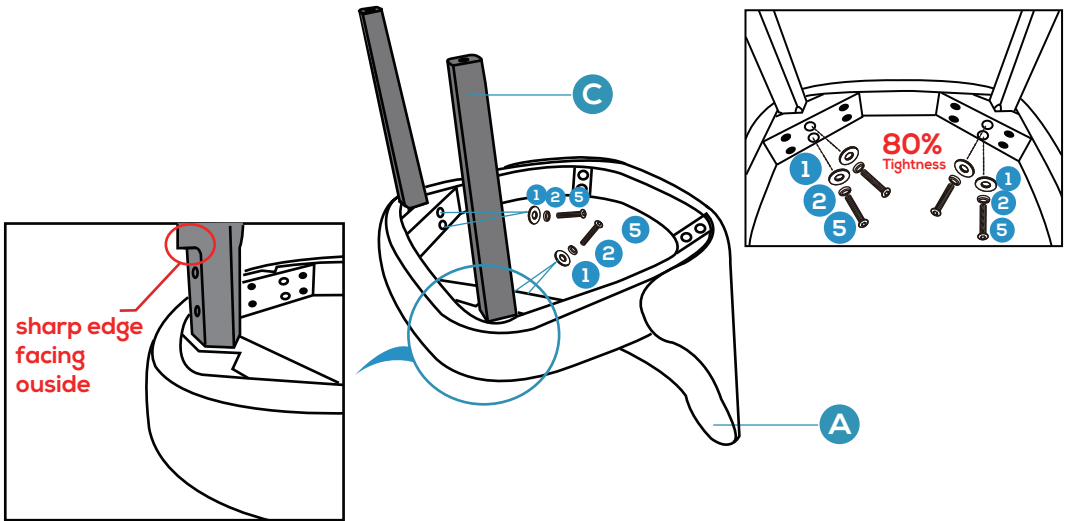
PRODUCT ASSEMBLY

1

Place part A Seat upside down on flat floor.

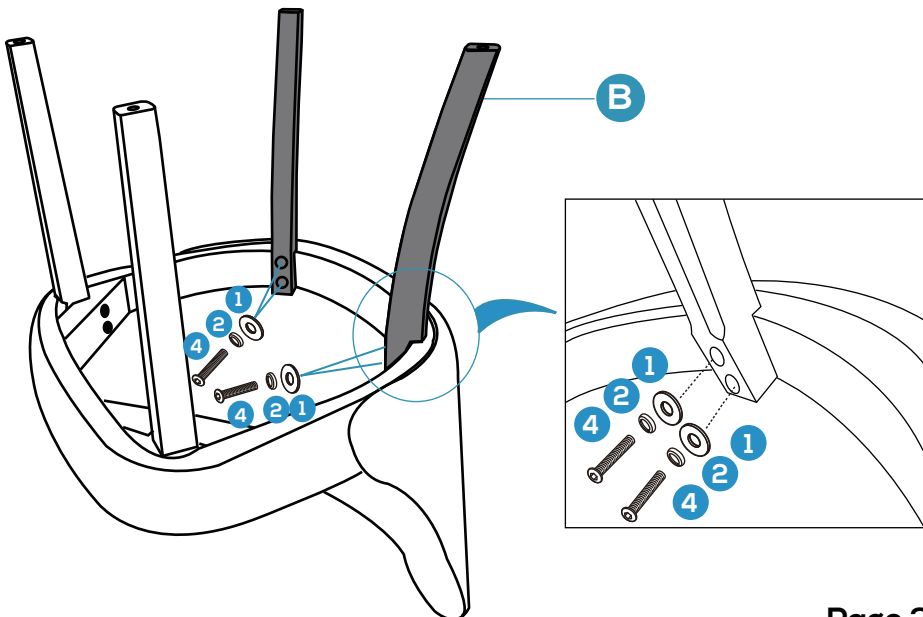
Put 2pcs Part (C) Front legs to front of the Seat as below and loosely attach with 4 sets of hardware (#5 Bolt + #2 Lock Washer + #1 Flat Washer) by 60%-80% tightness.

Attention: Make sure the sharp edge and holes covered with warning stickers are facing the outside of the seat.



2

Put 2pcs Part (B) Hind legs to hind of the Seat as below and loosely attach with 4 sets of hardware (#4 Bolt + #2 Lock Washer + #1 Flat Washer) by 60%-80% tightness.

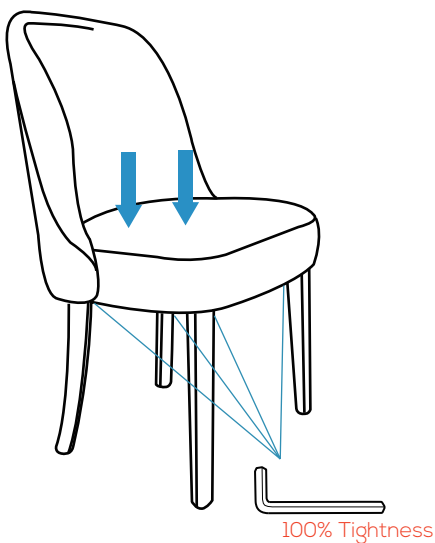


PRODUCT ASSEMBLY

3

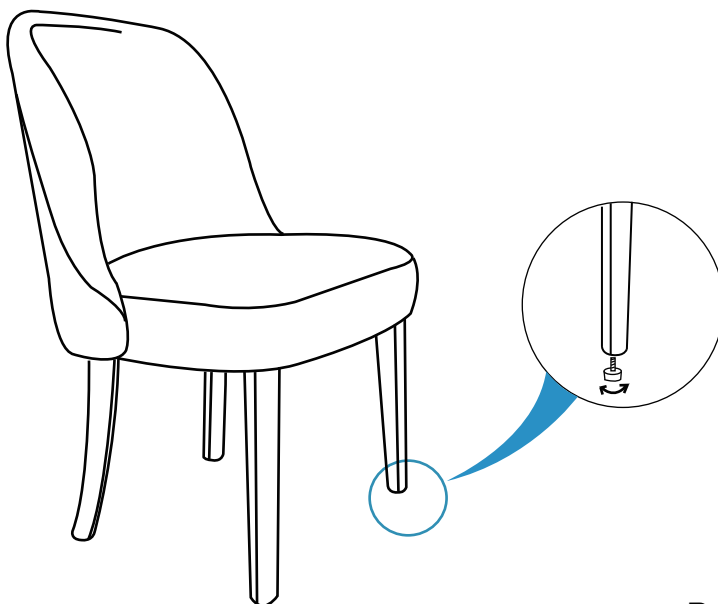
Place the chair in normal position, sit on the seat and press downward till you feel the legs touch the ground evenly.

Tighten all bolts now, make sure the chair is steady enough to use.



4

Adjustable feet levelers are provided for you to further adjust the level of the chair.

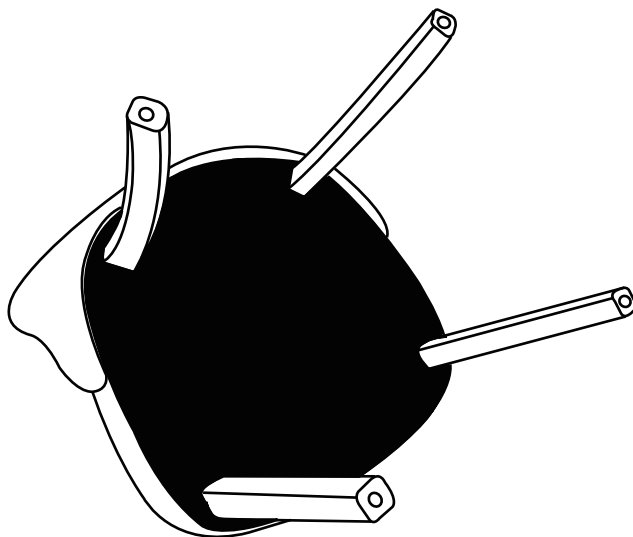


PRODUCT ASSEMBLY

5

Check the status of the chair and make sure every part is steady.

Cover the black fabric back onto bottom of the seat and turn it to normal position.



6

