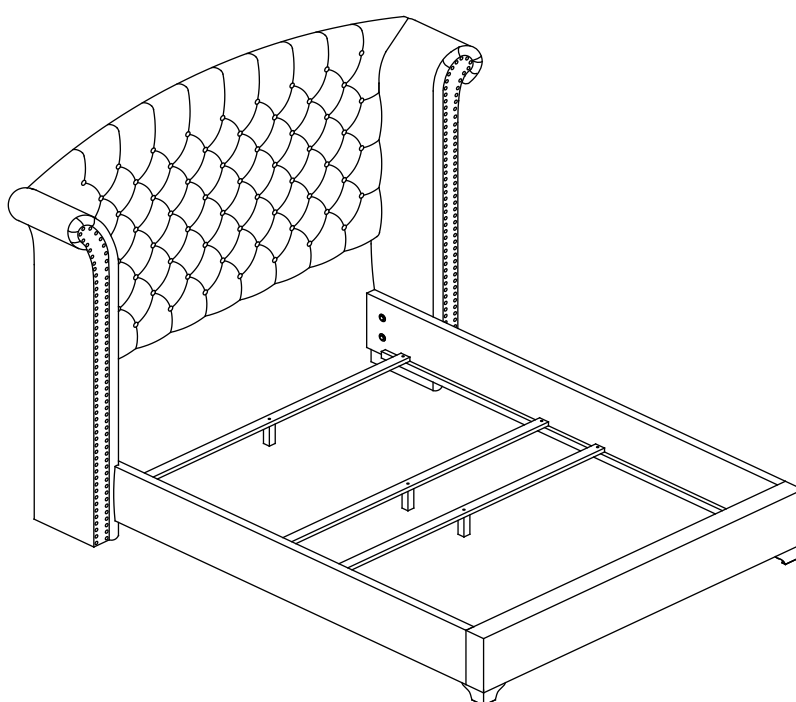


ASSEMBLY INSTRUCTIONS



ASSEMBLY INSTRUCTIONS

ASSEMBLY TIPS:

- 1. Remove hardware from box and sort by size.
- 2. Please check to see that all hardware and parts are present prior to start of assembly.
- 3. Please follow attached instructions in the same sequence as numbered to assure fast & easy assembly.



WARNING!

- 1. Don't attempt to repair or modify parts that are broken or defective. Please contact the store immediately.
- 2. This product is for home use only and not intended for commercial establishments.



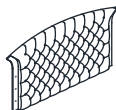
ASSEMBLY TIME

30 MINUTES

PARTS IDENTIFICATION

B1 (BOX 1)

A HEADBOARD PANEL



1PC

B2 (BOX 2)

B BED SLAT



4PCS

C FOOTBOARD PANEL



1PC

D FOOTBOARD LEG



2PCS

E BED SLAT SUPPORT
WITH LEVELER



4PCS

F LEFT BED RAIL
(WITH "F" LABEL)



1PC

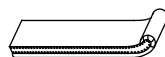
G RIGHT BED RAIL
(WITH "G" LABEL)



1PC

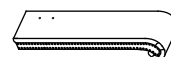
B3 (BOX 3)

H LEFT WING
(WITH "H" LABEL)



1PC

I RIGHT WING
(WITH "I" LABEL)



1PC

ASSEMBLY INSTRUCTIONS

ASSEMBLY TIPS:

- 1. Remove hardware from box and sort by size.
- 2. Please check to see that all hardware and parts are present prior to start of assembly.
- 3. Please follow attached instructions in the same sequence as numbered to assure fast & easy assembly.



WARNING!

- 1. Don't attempt to repair or modify parts that are broken or defective. Please contact the store immediately.
- 2. This product is for home use only and not intended for commercial establishments.

HARDWARE IDENTIFICATION

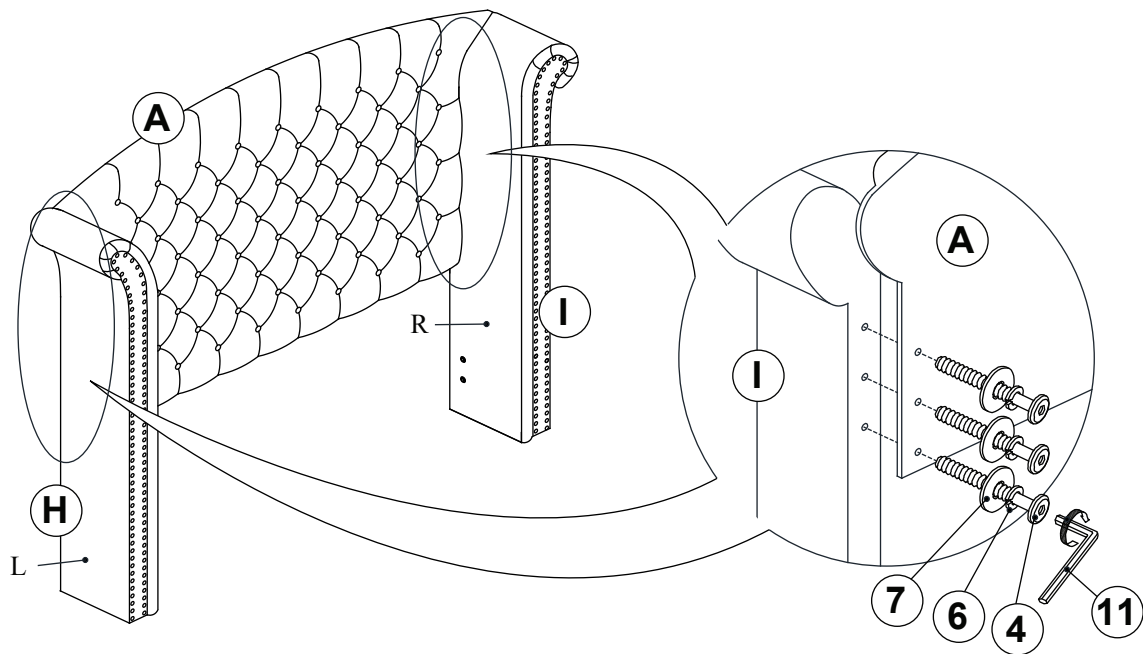
Z-B2 (BOX 2) - HARDWARE PACK IS LOCATED IN 223371Q (B2)

1	BOLT 1 (M8 x 20MM - RBW)		4PCS
2	BOLT 2 (M8 x 60MM - RBW)		4PCS
3	BOLT 3 (M6 x 16MM - RBW)		6PCS
4	BOLT 4 (M6 x 35MM - RBW)		10PCS
5	WOOD DOWEL (M10Ø x 30MM)		4PCS
6	SMALL LOCK WASHER (1/4" x 12 Ø - RBW)		6PCS

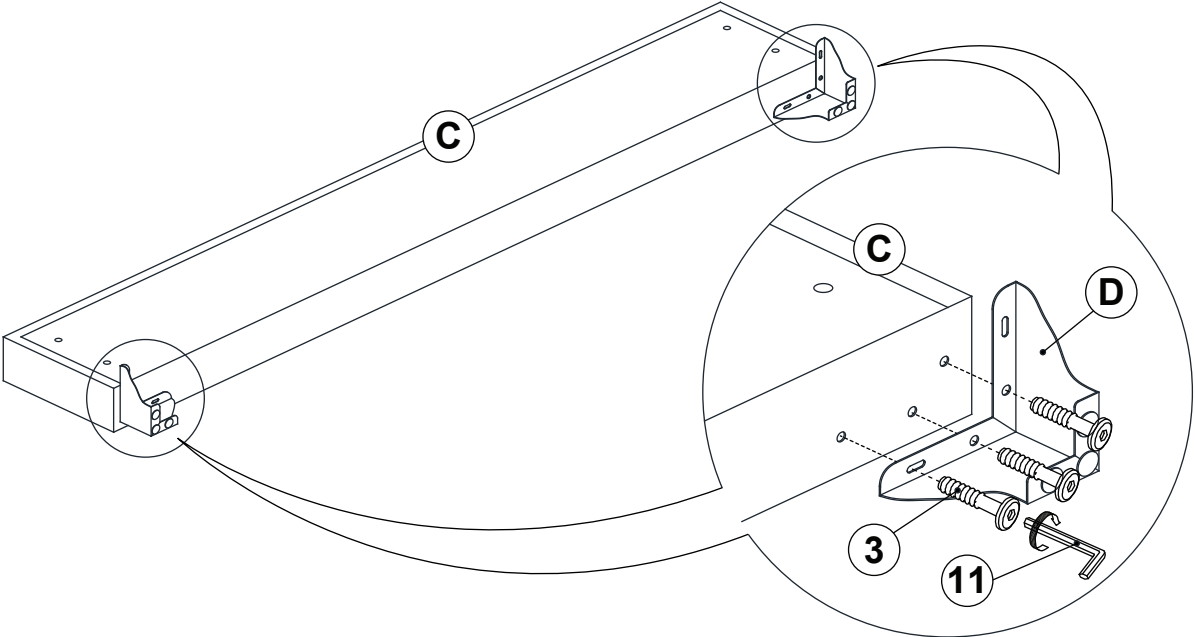
7	SMALL FLAT WASHER (1/4" x 19 Ø - RBW)		6PCS
8	BIG LOCK WASHER (5/16" x 14 Ø - RBW)		4PCS
9	BIG FLAT WASHER (5/16" x 22 Ø - RBW)		4PCS
10	FLAT HEAD SCREW (M4 x 32MM - RBW)		8PCS
11	SMALL ALLEN WRENCH (M4 x 100MM - BLK)		1PC
12	BIG ALLEN WRENCH (M5 x 65MM - BLK)		1PC

ASSEMBLY INSTRUCTIONS

STEP 1

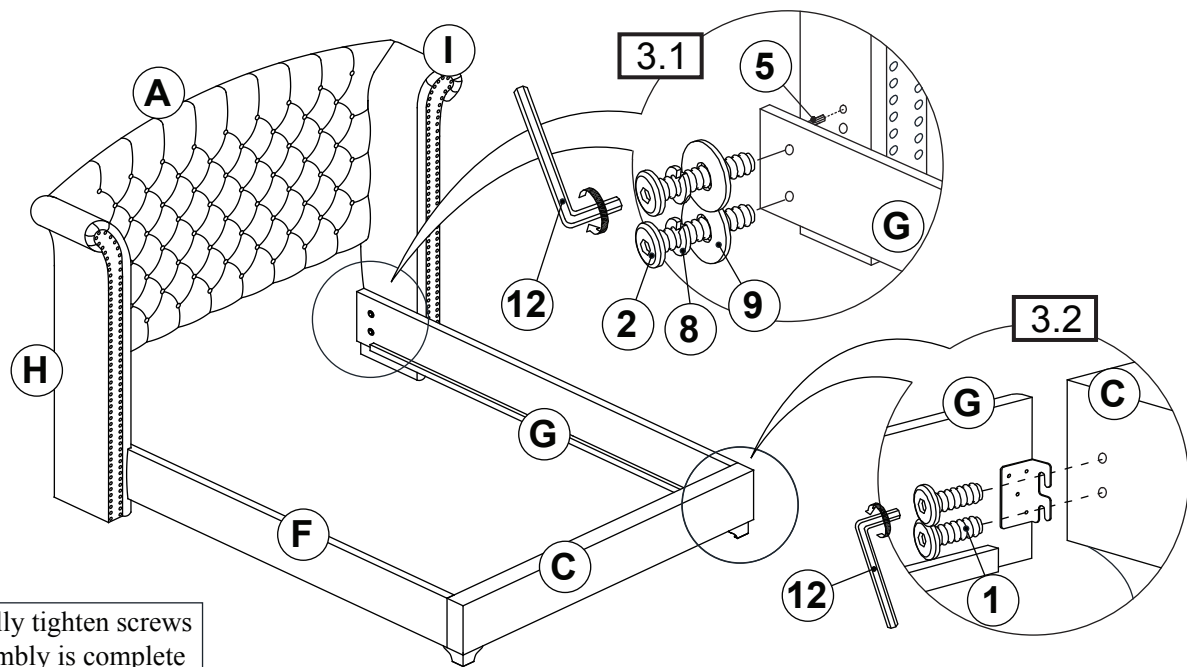


STEP 2

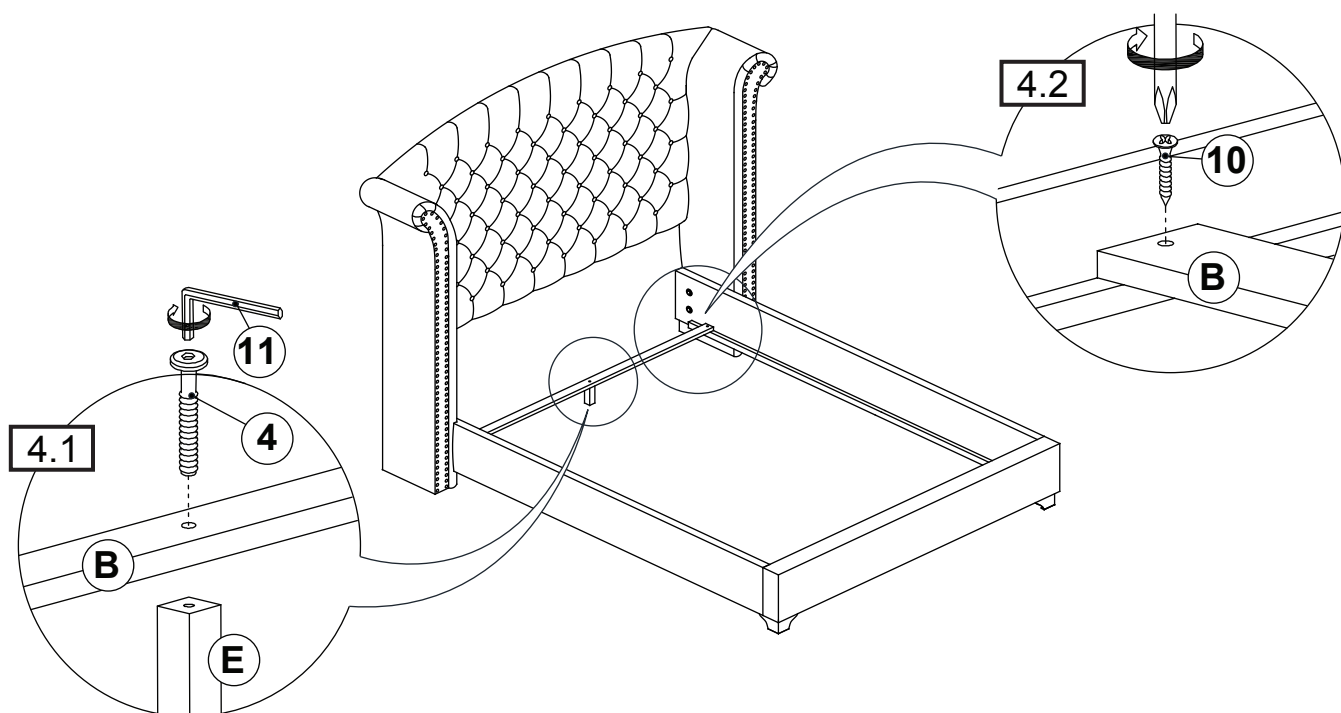


ASSEMBLY INSTRUCTIONS

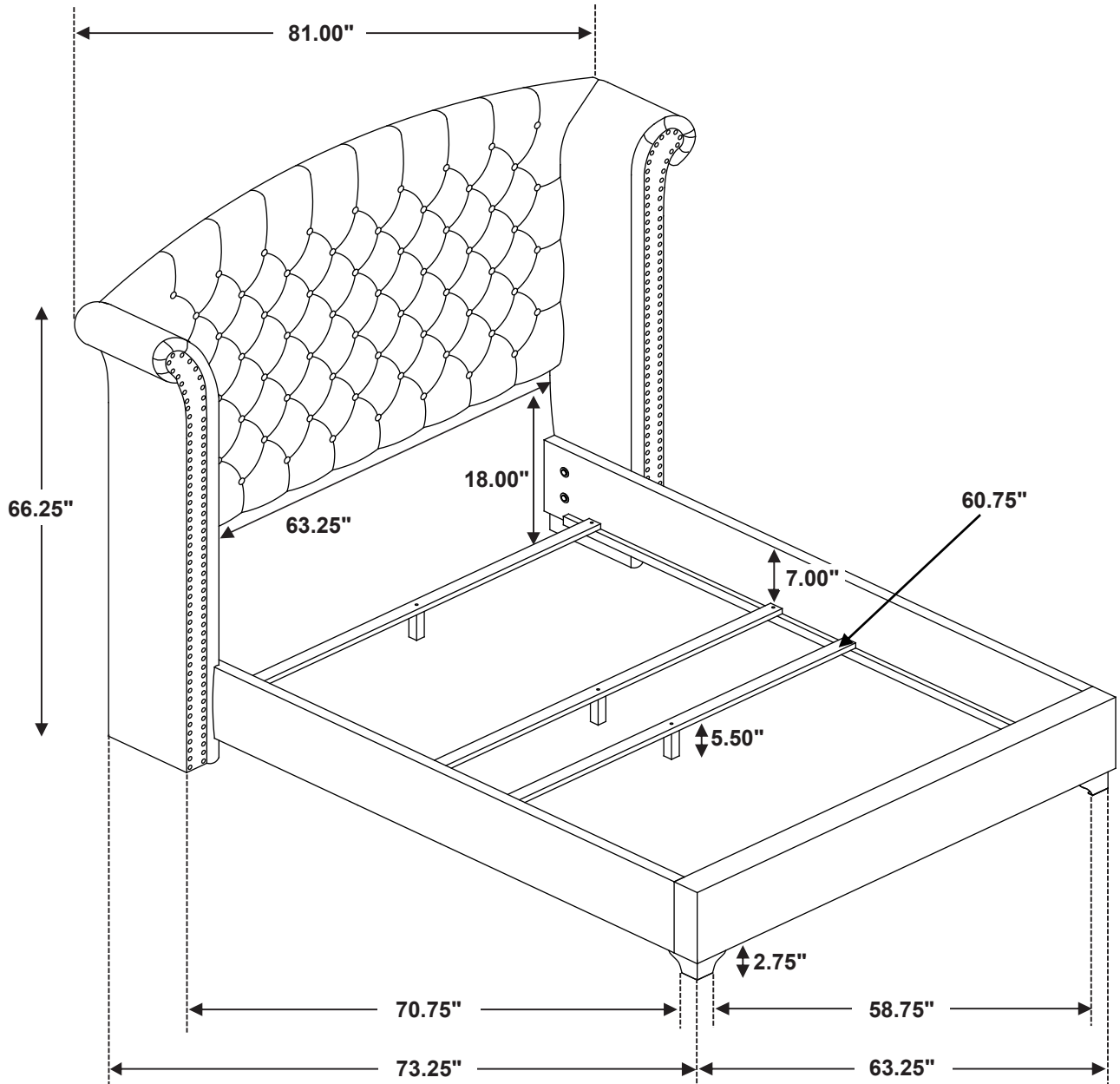
STEP 3



STEP 4



Inner Size : 60.75"W X 80.75"D



Note : Dimension tolerance $\pm 5\%$