

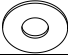



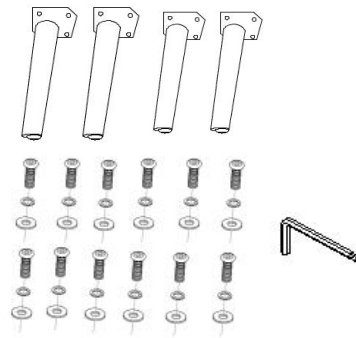


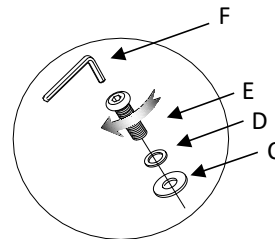
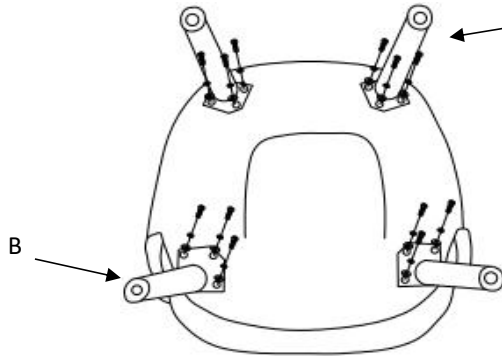
# ASSEMBLY INSTRUCTIONS

PARTS #	PARTS NAME	DRAWING	QTY
A	Front Legs		2
B	Back Legs		2
C	Flat Washer		12
D	Flash Washer		12
E	Long Bolt		12
F	Allen Key		1

**Step 1:**Take out Legs and other hardware. Pls take a note: On the bottom of legs, there have the label for "front leg "or "back leg"on it.



**Step 2:**Lock legs by using flash washer (D), flat washer(C), bolt(E), Then tighten the bolts with an allen key (F).



**Step3:** Level the chair and place the chair upright on a level surface.

