



## WARNING

PLEASE READ ALL SAFETY WARNINGS AND INSTRUCTIONS CAREFULLY. PLEASE INSPECT ITEMS CAREFULLY BEFORE ATTEMPTING TO INSTALL.

## QUICK RESPONSE SERVICE

We constantly strive to provide the high-quality products and excellent customer service to achieve our customer satisfaction.

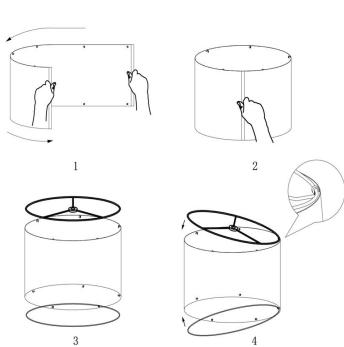
## SPECIFICATION PARAMETERS

\* Material: Glass and Fabric

## PACKING LIST

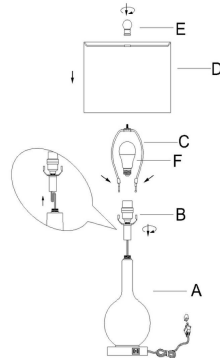
PIECE	DESCRIPTION	PICTURE	QUANTITY	PIECE	DESCRIPTION	PICTURE	QUANTITY
A	Lamp Body		1X	D	Lamp Shade		1X
B	Socket Assembly		1X	E	Finial		1X
C	Harp		1X	F	Bulb		1X

## INSTALLATION STEPS



Step 1: Attach the round lampshade

Step 2: Clip the round metal piece in the hook



Step 1: Fasten Socket Assembly(B)onto Lamp body(A).

Step 2:Squeeze the harp end (C) and inset into the saddle.

Step 3: Install the bulb(F) on the socket.

Step 4: Assemble the lampshade(D).

Step 5: screw the finial(E) into the harp(C).

## WARRANTY POLICY

Warranty: 5 years warranty.

We offer online service, if you have any questions, please feel free to contact us at [service@marinflow.com](mailto:service@marinflow.com).