



**WARNING**

PLEASE READ ALL SAFETY WARNINGS AND INSTRUCTIONS CAREFULLY. PLEASE INSPECT ITEM CAREFULLY BEFORE ATTEMPTING TO INSTALL.






**QUICK RESPONSE SERVICE**

We constantly strives to provide the high-quality products and excellent customer service to achieve our customer satisfaction. If you have any question, please feel free to contact us through Lowe's.

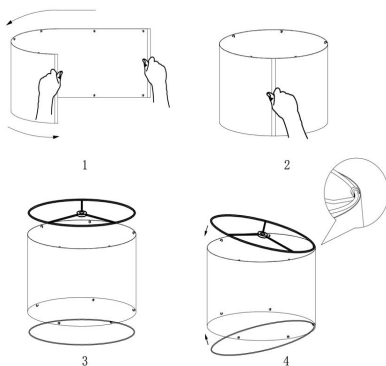
**SPECIFICATION PARAMETERS**

\* Material: Metal and Fabric

**PACKING LIST**

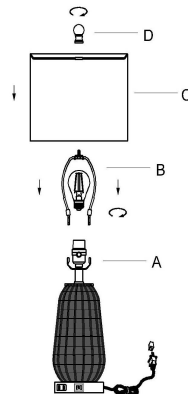
PIECE	DESCRIPTION	PICTURE	QUANTITY	PIECE	DESCRIPTION	PICTURE	QUANTITY
A	Bulb		2X	D	Harp		2X
B	Lamp Shade		2X	E	Finial		2X
C	Lamp Holder		2X				

**INSTALLATION STEPS**



Step 1: Attach the round lampshade

Step 2: Clip the round metal piece in the hook



Step 1: Press the harp(B) onto saddle(A)

Step 2: Install the bulb on the socket

Step 3: Assemble the lampshade(C)

Step 4: screw the finial(D) into the harp(B)

**WARRANTY POLICY**

Warranty: 5 years warranty.

We provide online service, if you have any question, please feel free to contact us at [service@marinflow.com](mailto:service@marinflow.com)