

DREAMS

IDEA

Instruction Manual



DREAMS/IDEA

NO.CH0022

ABOUT US

*D*REAMSIDEA IS A ONE-STOP HOME

FURNISHING AND SERVICE COMPANY BASED IN USA.

WE ARE DEDICATED TO BRINGING YOUR DREAM HOME TO LIFE.

OUR SERVICES COVER FROM DESIGN, PRODUCTION,

DIRECT SELL, STORAGE, AND TRANSPORTATION.

IF REALITY IS THE NEAR SHORE

AND IDEALISM THE FAR SHORE,

*D*REAMSIDEA

AS THE FERRY BETWEEN THEM,

EAGER TO ACCOMPANY YOU ON A JOURNEY

TO YOUR IDEAL HOME.

ITEM NO.CH0022

WARRANTY

We strive to offer high quality product and we also try our best to satisfy each customer that order from us, no matter on products or services as needed. Each customer receives a record of their order, such as the order number or item receipt. For any items that are out of warranty period, you may still be able to purchase the replacement parts from our company if they are available.

Are you having difficulty
with assembly? Missing parts?

Please contact us : info@firstopintl.com

Tel:(562)-781-3327

send an email with your order No. to us

For return, please check the return policy with
the retailer or platforms you bought from.

Appreciate your purchasing from us.

Pop up your life by our furniture !

MAINTAINANCE AND WARNING

Please read the manual thoroughly
before you start installing.

Please keep the product away from
sharp object.

Packaging and small parts may have
chocking hazard, please keep them away
from children and pets.

Please clean the product according to each
clean code, check the product description
for more information.

Please keep the product away
from fire.

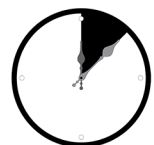
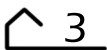
If you have any other questions, please
contact us, we will be glad to help you out.

If the product is placed under direct
sunlight, the pattern or color might fade
away overtime.

Check the product periodically to make
sure everything is secured and tightened.

Always use proper tools for installation.

Do not jump on the product.



Around 20 min

PRODUCT DESCRIPTION

Soft & Breathable Fabric:
Cotton-linen upholstery offers a
skin-friendly, airy feel perfect for
daily relaxation.

Superior Cushioning: Seat is
layered with high-density foam,
synthetic fiber, and a spring
package for cloud-like comfort
and structure.

Built to Last: Solid wood legs
provide sturdy, long-term support,
holding up to 400 lbs effortlessly.

Vintage Detailing: Eye-catching
nailhead trim adds a sophisticated,
antique-inspired touch.

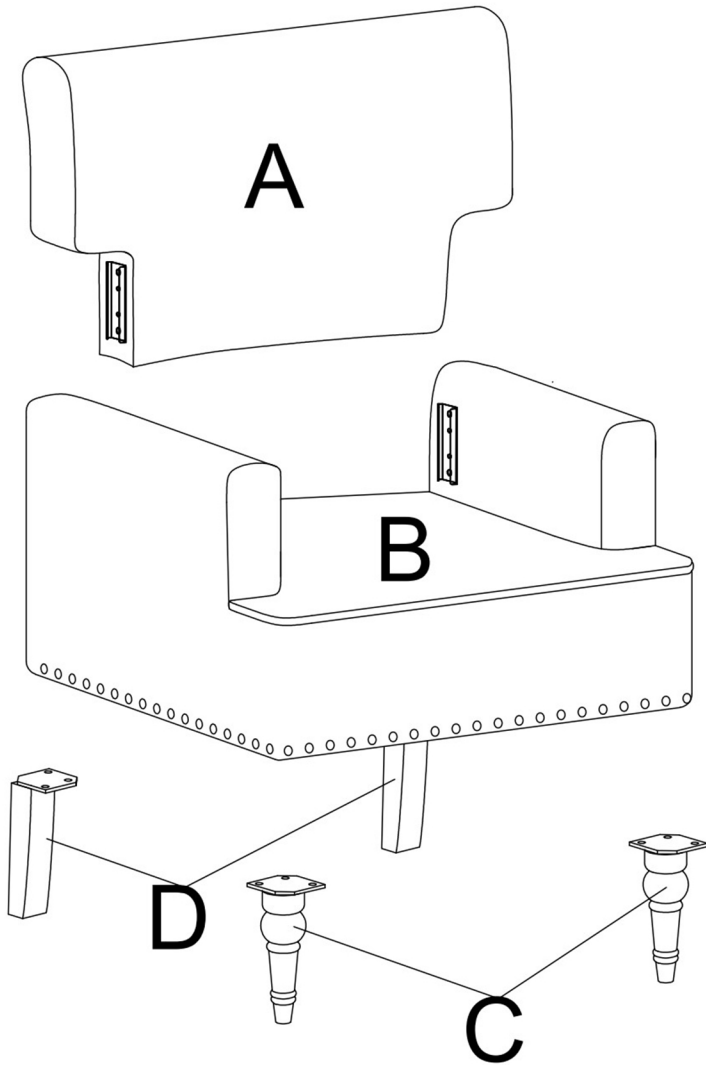
Versatile Placement: Works
beautifully in living rooms,
bedrooms, or offices, wherever
comfort and charm are needed.

Dream



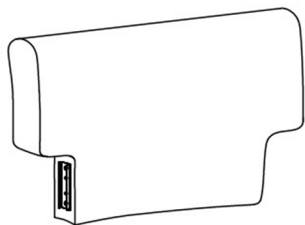
House

EXPLODED VIEW



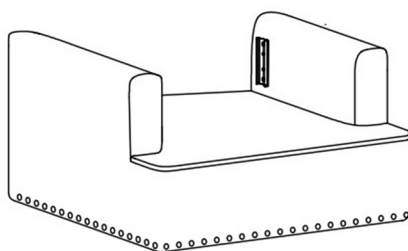
PARTS

A*1



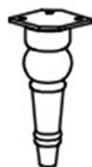
Backrest

B*1



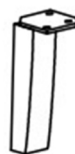
Seat frame

C*2



Front legs

D*2



Rear legs

HARDWARE

TOOL LIST

NOTE: Designated with (★) We provide additional spare parts in the hardware package

①*12



★ Bolt

②*1

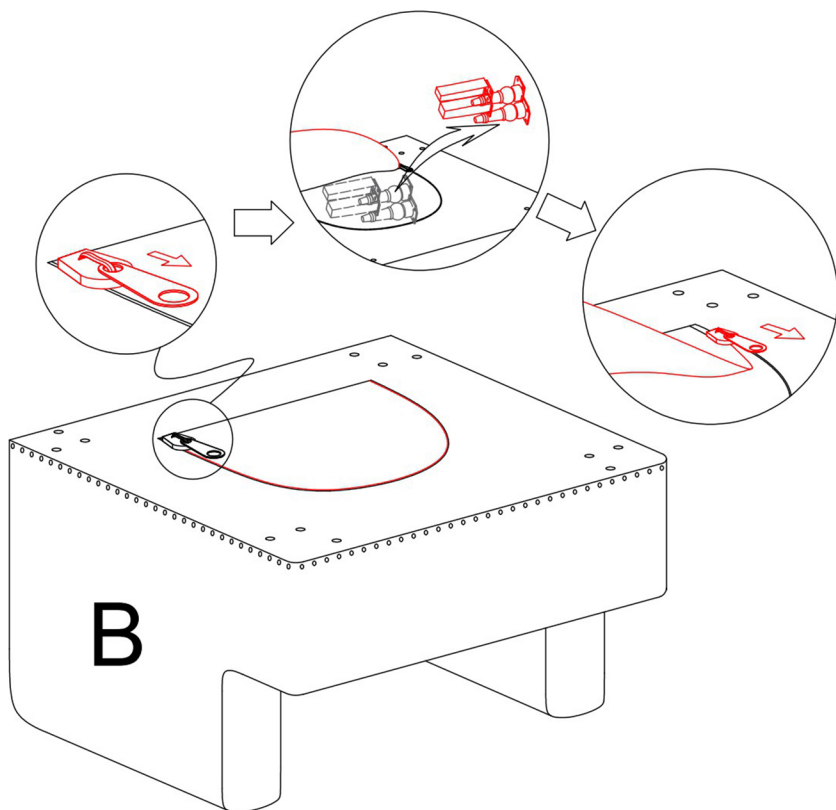


Allen key

Please make sure all hardware&packing material fitting the list.
Especially some small accessories may be missing during transportation. Please contact us if you have any question.

step 1

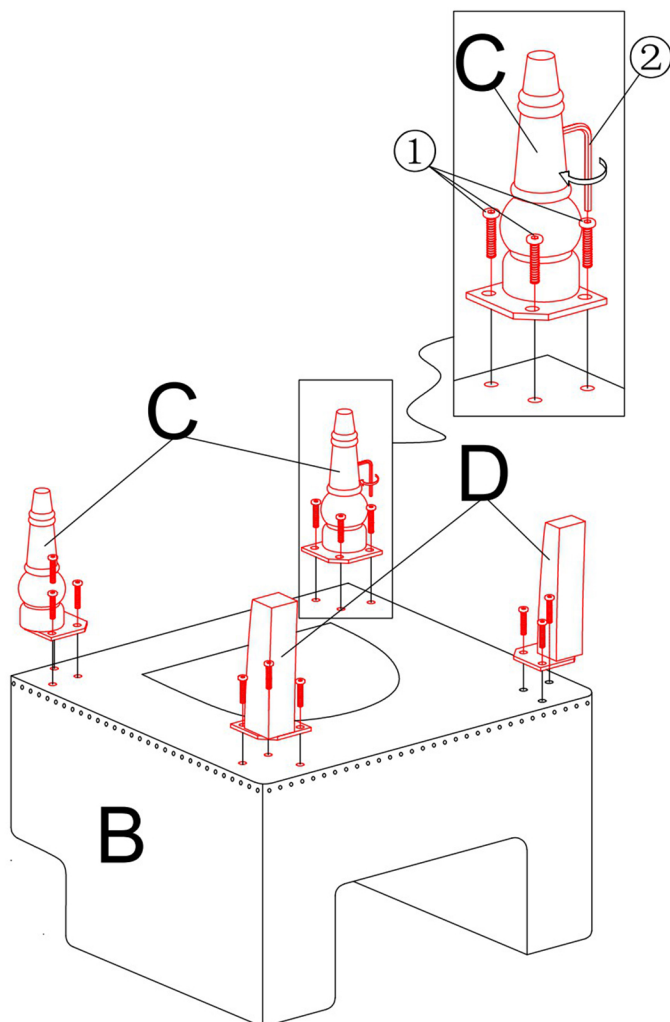
Unzip the zipper on the bottom of the seat frame (B) and take out the legs (C & D).



* You may place a rug or some covers underneath the seatframe, in order to protect your floor and the product.

step 2

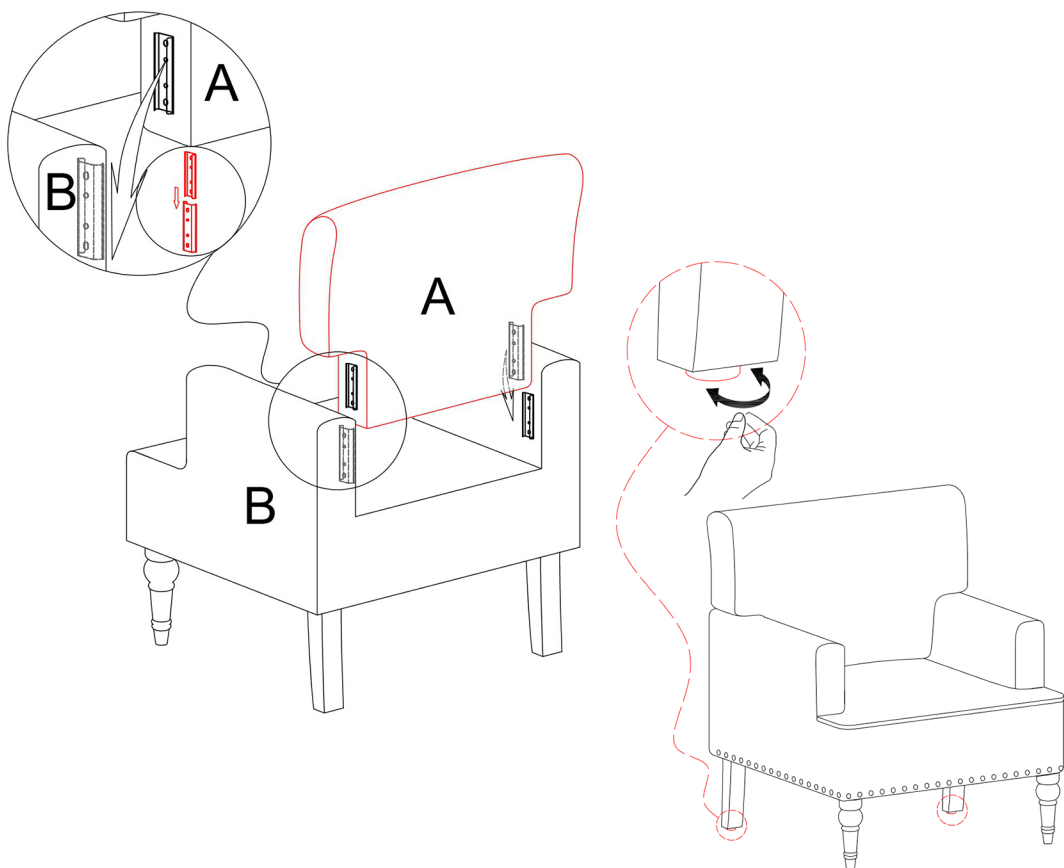
Install the front legs (C) and back legs (D) onto the bottom of the seat frame (B), use the allen wrench (2) provided to tighten the bolts(1), make sure all the bolts are fully tightened.



step 3

Install the back (A) onto the seat frame (B) by inserting the connector into the slots on the seat frame, make sure the connectors are both correctly aligned before pushing down.

Please note: the legs of the chair can be adjusted by twisting the leveler on the tip of the legs as shown, it can help you use this chair on ground that is not flat, please check before you use the chair.





ASSEMBLY INSTRUCTIONS

Tel.(562)-781-3327

Please contact us:info@firstopintl.com

<https://www.dreamsidea.com>