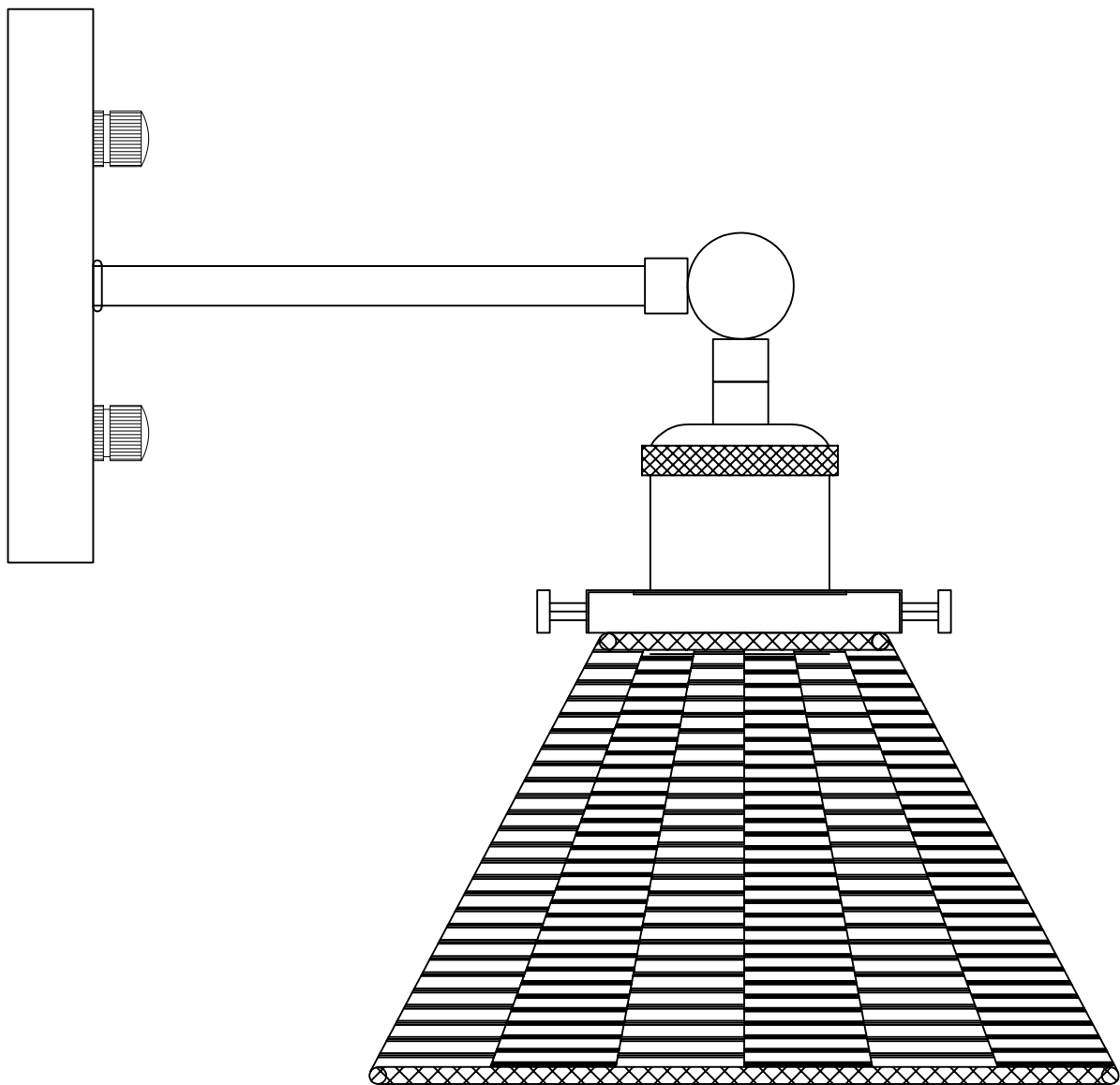


# W2205110V

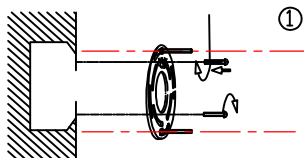


English / Español / Français

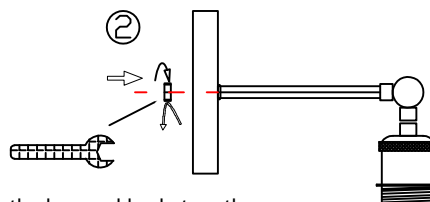


# W2205110V

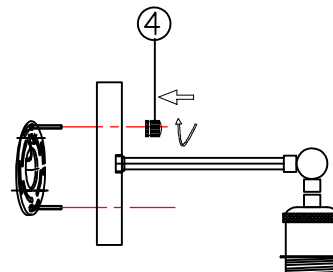
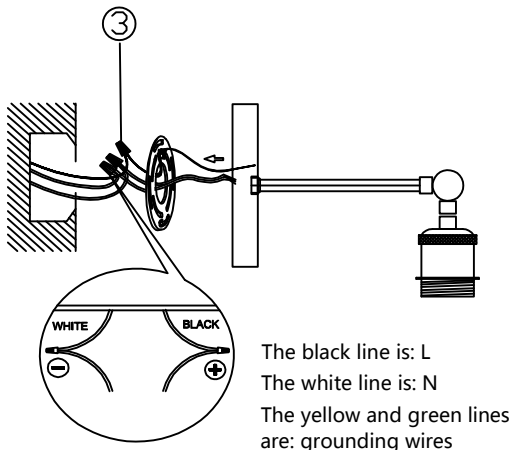
Installation & Operating Instructions for the  
Parrotuncle Owner's Installation ,Manual  
WARNING: SHUT POWER OFF AT FUSE OR CIRCUIT BREAKER



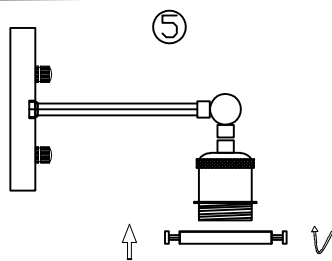
Install the bracket on top of the box



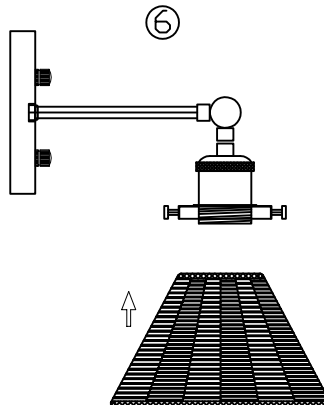
Fix the box and body together



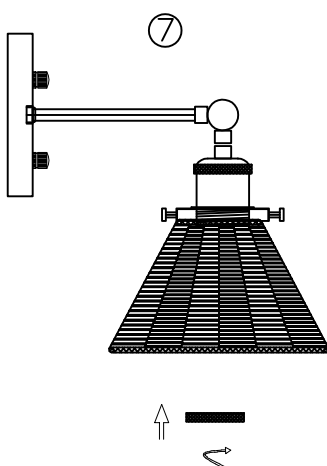
Fix the bracket screws and align them with the two holes in the box, and install the striped nuts



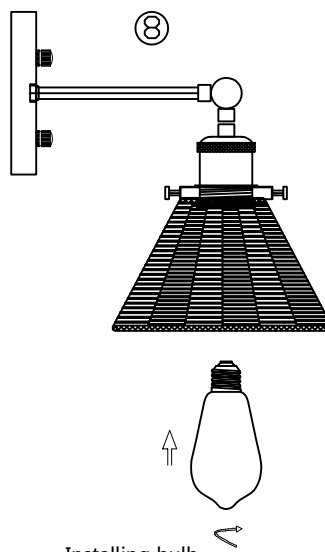
Install decorative flat cover



Install the lampshade



Install the lamp cap ring



Installing bulb

## TECHNICAL INFORMATION

SKU	Nominal voltage	light
W2205110V	AC:110-120V	1*E26 MAX.40W (Not included)

