



Presents our ghoulish collection of Halloween décor from

FRASER HILL FARM

Thank you for choosing Haunted Hill Farm!
If you have any questions, concerns or suggestions, please
contact us directly.

Boo@HauntedHillFarm.com (Anytime)

1-888-840-4559

(9AM to 9PM Eastern Time, Monday - Friday)

(9AM to 5PM Saturday - Sunday)

In the unlikely event that you experience a problem, please provide pictures and a description of the problem, a receipt (if available), name and address of the purchaser and the name of retailer where you purchased the product.

Please do not return this item to the retailer.

See the full Haunted Hill Farm collection and get online support for assembly, troubleshooting, care and maintenance at:

www.HauntedHillFarm.com

Please follow the step by step guide and enjoy your Towering Skeleton!

HHTWRSKEL-2FLSA

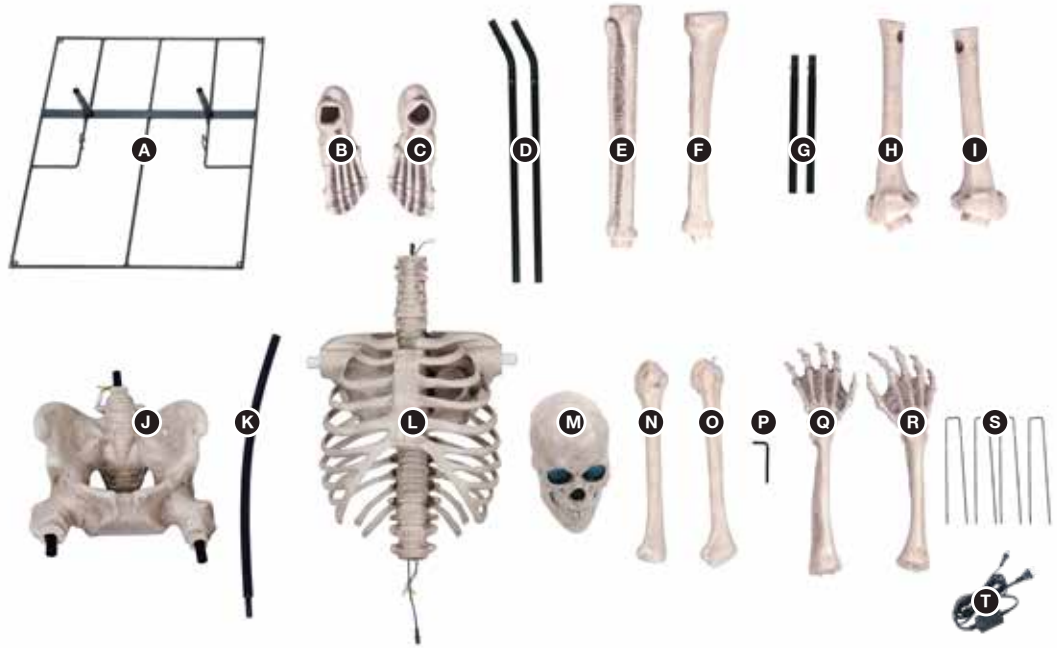


The model number of your item is printed on the side of your carton.
Always use this number to identify your item.

Thank you for your purchase of this quality Halloween decor. With proper use and care, your Halloween decor will provide you with years of enjoyment. Please follow the instructions on how to assemble and disassemble your item. If you should have any problems with your item, or you have any questions, **DO NOT** return it to the place of purchase. Please call our toll-free number: **1-888-840-4559** and a customer service representative will assist you. Enjoy your Holiday!

PARTS LIST

- A. Base x 1
 - B. Left Foot x 1
 - C. Right Foot x 1
 - D. Lower Support Poles x 2
 - E. Left Shin x 1
 - F. Right Shin x 1
 - G. Upper Support Poles x 2
 - H. Left Femur x 1
 - I. Right Femur x 1
 - J. Pelvis x 1
 - K. Spinal Support Pole x 1
 - L. Rib Cage x 1
 - M. Head x 1
 - N. Right Upper Arm x 1
 - O. Right Upper Arm x 1
 - P. Allen Wrench x 1
 - Q. Left Forearm x 1
 - R. Right Forearm x 1
 - S. Stakes x 4
 - T. Adapter x 1
- Input: 120V AC 50/60Hz
Output: 5.9V 1.5A



BEFORE ASSEMBLING, REMOVE ALL THE ABOVE PARTS FROM BOX. IF ANY PART IS MISSING, DO NOT ATTEMPT TO ASSEMBLE THE PRODUCT. CONTACT CUSTOMER SERVICE AT BOO@HAUNTEDHILLFARM.COM, OR BY PHONE FROM 9:00AM TO 5:00PM EST AT 1-888-840-4559.

CARE AND STORAGE INSTRUCTIONS

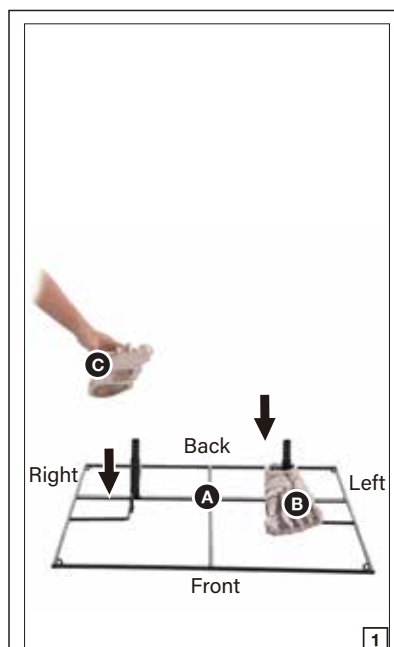
When product is not in use, store in its original packing after it is completely dry.
Keep away from heat.

WARNING

This item is not a toy and should be used for decoration only. This item contains small parts that can be a choking hazard. Keep all plastic and wire parts away from children. Recommended for ages 14 and up.

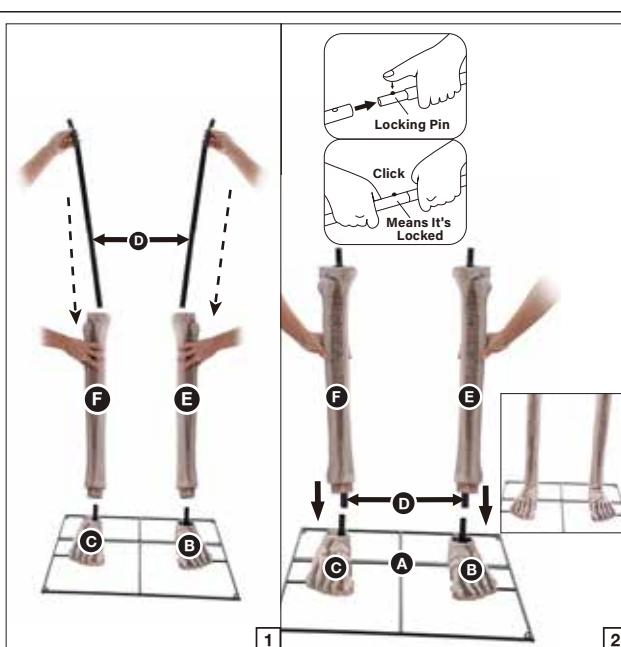
1. Please use the adapter supplied by manufacturer.
2. Please assemble item according to instructions. Connect all wires according to matching color.
3. Children should be supervised by adults. Item should not be grabbed, as it becomes a tipping hazard. Keep all away from the adapter, as it heats up during operation.
4. Colors, style and contents may vary slightly from those shown on the package.

ASSEMBLY INSTRUCTIONS



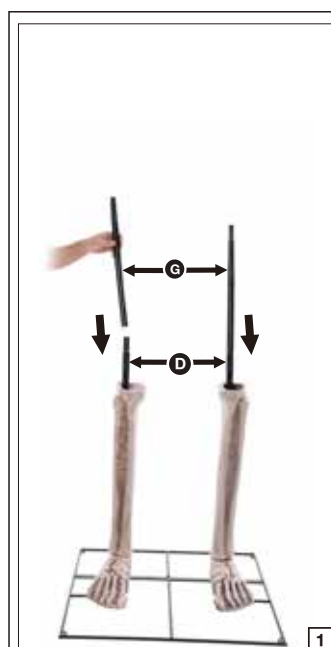
STEP 1

Note: Throughout the instructions, left and right are relative to the character. Place the (B) Left Foot over the left pole available on the (A) Base. Then place the (C) Right Foot over the right pole available on the (A) Base as shown in Figure 1.



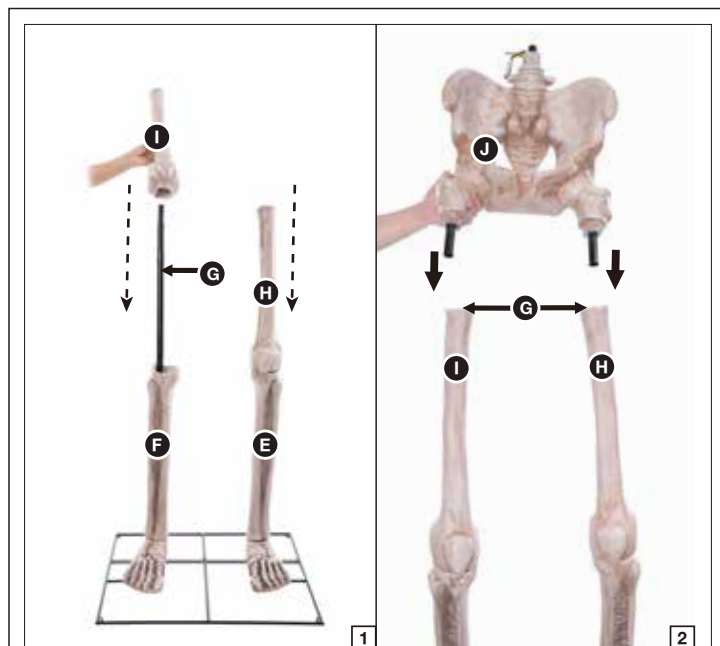
STEP 2

Slide the (D) Lower Support Poles all the way through the (E & F) Shins as shown in Figure 1. Then attach the (D) Lower Support Poles to the (A) Base and secure by aligning the quick-connect push buttons into the pre-drilled holes as shown in Figure 2.
Note: The (E & F) Shins should fit nicely into the (B & C) Foot as shown in Figure 2.



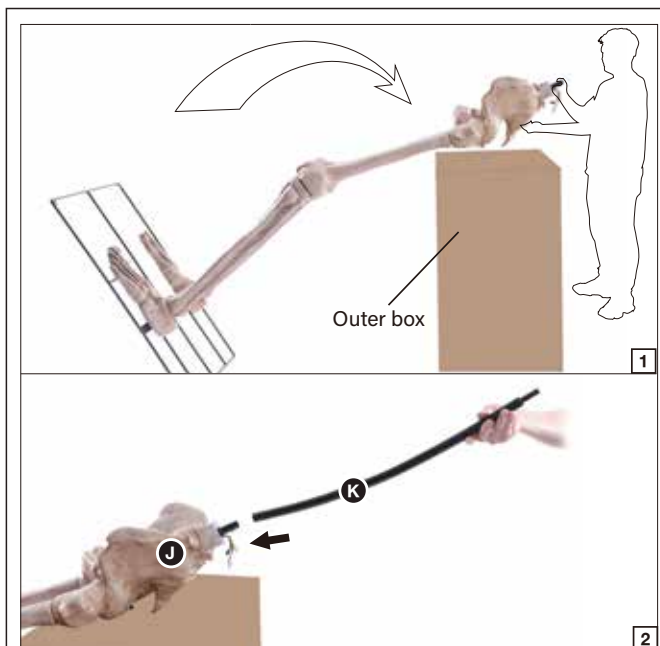
STEP 3

Attach the (G) Upper Support Poles to the (D) Lower Support Poles and secure by aligning the quick-connect push buttons into the pre-drilled holes as shown in Figure 1.



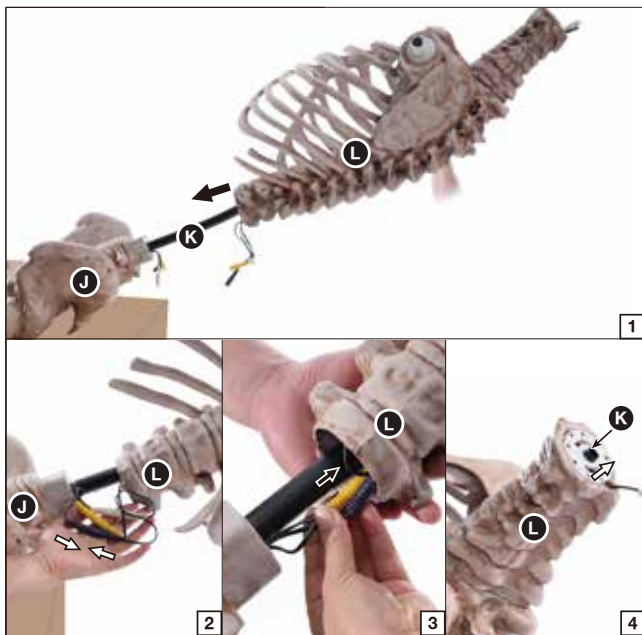
STEP 4

Slide the (H & I) Femurs over the (G) Upper Support Poles and fit into the (E & F) Shins as shown in Figure 1. Attach the (J) Pelvis to the (G) Upper Support Poles and secure by aligning the quick-connect push buttons into the pre-drilled holes as shown in Figure 2. If there is difficulty in assembling the (J) Pelvis, try adjusting the upper legs until they are properly aligned.



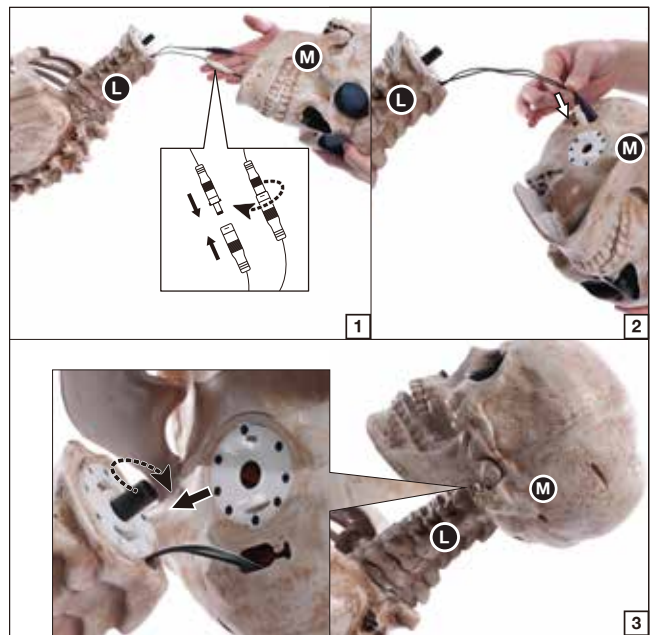
STEP 5

Lean the skeleton against the box it came with for easier assembly as shown in Figure 1. Connect the (K) Spinal Support Pole to the top of the (J) Pelvis and secure by aligning the quick-connect push button into the pre-drilled hole as shown in Figure 2.



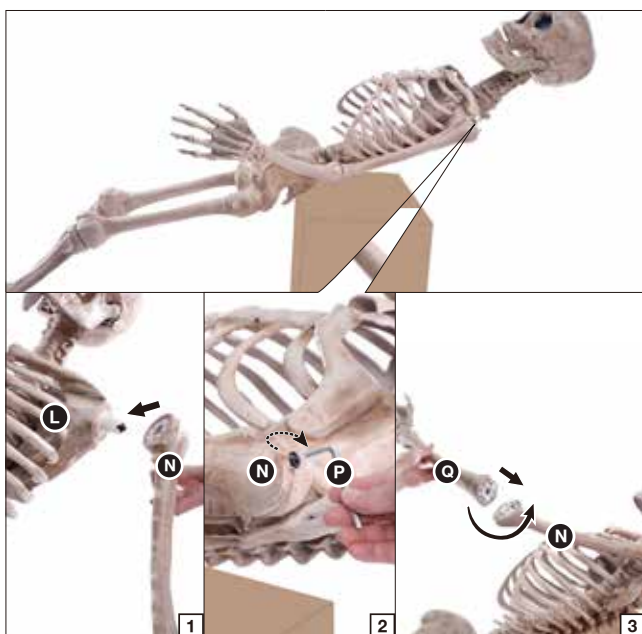
STEP 6

Slide the (L) Rib Cage over the (K) Spinal Support Pole then connect all available cables from the (L) Rib Cage to the (J) Pelvis by color as shown in Figure 1 and 2. Tuck the cables into the cavity at the bottom of the (L) Rib Cage and then fit the (L) Rib Cage onto the (J) Pelvis as shown in Figure 3. Align "head of metal tube" to "middle hole of plastic part". After aligned, slide the spine to the pelvis, at the meanwhile, the metal tube will go throughout to fit them as shown in Figure 4.



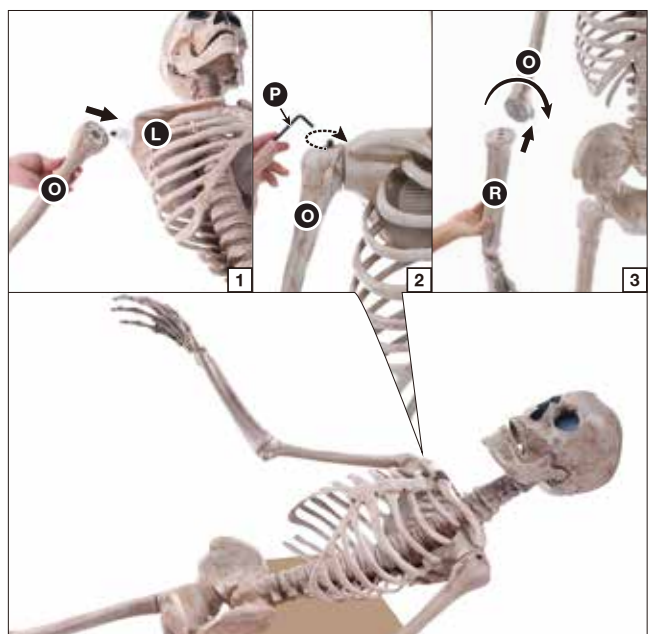
STEP 7

Connect the cables from the (M) Head to the cables available from the top of the (L) Rib Cage by color and twist both cables on opposite direction as shown in Figure 1. Tuck the cables inside the head as shown in Figure 2. Lower the (M) Head over the (L) Rib Cage and secure in place with a twisting motion as shown in Figure 3.



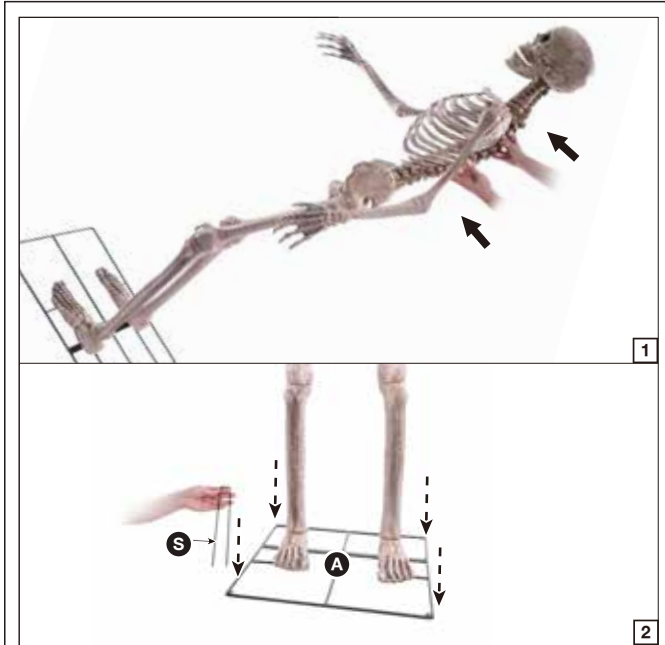
STEP 8

Place the (N) Left Upper Arm onto the left shoulder shaft on the (L) Rib Cage, so that the screw faces grooved side of the shaft. (Arm can be posed raised or lowered after the arm is secured). Tighten the shoulder screw to secure the (N) Left Upper Arm in place with the (P) Allen Wrench, as shown in Figure 2. Do not over tighten the screw. Attach the (Q) Left Forearm to the (N) Left Upper Arm using the insert and twist motion as shown in Figure 3.



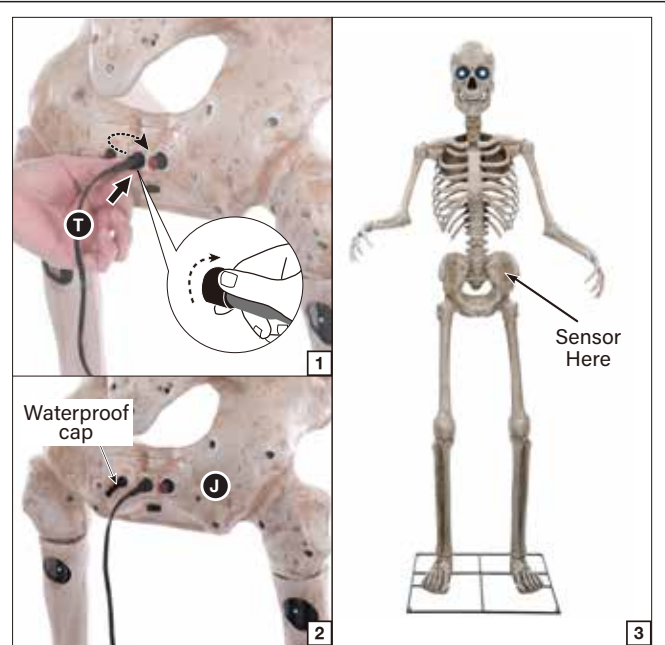
STEP 9

Place the (O) Right Upper Arm onto the right shoulder shaft of the (L) Rib Cage, so that the screw faces grooved side of the shaft. (Arm can be posed raised or lowered after the arm is secured). Tighten the shoulder screw to secure the (O) Right Upper Arm in place with the (P) Allen Wrench, as shown in Figure 2. Do not overtighten the screw. Attach the (R) Right Forearm to the (O) Right Upper Arm using the insert and twist motion as shown in Figure 3. Once arms are attached, they can be posed by raising or lowering using firm steady pressure to upper arm.



STEP 10

Reposition the Skeleton upright as show in Figure 1. Position the Skeleton on a flat level outside and secure the Skeleton to the ground by pushing the (S) Stakes through the holes available on the (A) Base and into the ground as shown in Figure 2.



STEP 11

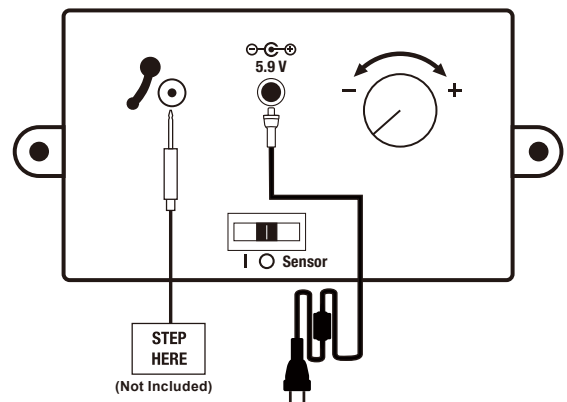
Insert adapter cable to the adapter slot available at the back of the (J) Pelvis and twist the cap to secure as shown in Figure 1. Warning: Waterproof cap must cover Try Me receiver when not in use as shown in Figure 2. **Your Towering Animated Skeleton is now fully assembled. Plug in and turn on to let the fun begin!**

OPERATING INSTRUCTIONS

1. Plug the power adapter into a standard power outlet and adjust the settings on the Function Control Box, located on the (J) Pelvis, as desired.

2. Settings:

Sensor	This switch mode will activate lights, sound, and animation when the Infra-red (IR) sensor is activated and will operate for one activity cycle with each activation. The Infra-red (IR) sensor has a range of up to 2 m/6.5 ft. and will activate when someone comes within an 80-degree angle from left-to-right, as well as from above and below.
○	This switch mode allows the item to be activated only if triggered by using a Step Here Try Me Activation Pad (Not Included). The item will operate for one activity cycle with each Try Me activation.
	This switch mode will continuously operate the lights, sound, and animation of the item .
⏸	Raise or lower the volume using the volume control turn dial, turn all the way down to turn the volume off .



This device complies with Part 15 of the FCC Rules. Operation is subject to the following two conditions: (1) This device may not cause harmful interference, and (2) this device must accept any interference received, including interference that may cause undesired operation.

Caution: Changes or modifications not expressly approved by the party responsible for compliance could void the user's authority to operate the equipment.

NOTE: This equipment has been tested and found to comply with the limits for a Class B digital device, pursuant to Part 15 of the FCC Rules. These limits are designed to provide reasonable protection against harmful interference in a residential installation. This equipment generates, uses, and can radiate radio frequency energy and, if not installed and used in accordance with the instructions, may cause harmful interference to radio communications. However, there is no guarantee that interference will not occur in a particular installation. If this equipment does cause harmful interference to radio or television reception, which can be determined by turning the equipment off and on, the user is encouraged to try to correct the interference by one or more of the following measures: Reorient or relocate the receiving antenna. Increase the separation between the equipment and receiver. Connect the equipment into an outlet on a circuit different from that to which the receiver is connected. Consult the dealer or experienced radio/TV technician for help.

SAFETY INSTRUCTIONS - SAVE THESE INSTRUCTIONS
DANGER - TO REDUCE THE RISK OF FIRE OR ELECTRIC SHOCK
CAREFULLY FOLLOW THESE INSTRUCTIONS

When using electrical products, basic precautions should always be practiced including the following:

READ AND FOLLOW ALL SAFETY INSTRUCTIONS.

Read and follow all instructions that are on the product or provided with the product.

For a cord-connected or direct plug-in power unit, do not use an extension cord.

Reference the National Electrical Code, NFPA 70, specifically for the installation of wiring and clearances from power and lighting conductors.

Installation work and electrical wiring must be done by qualified person(s) in accordance with all applicable codes and standards, including fire-rated construction.

For a cord-connected or direct plug-in power unit, do not install or use within 10 feet of a pool.

IMPORTANT SAFETY INSTRUCTIONS



Warnings

WARNING: Risk of Electric Shock. When used outdoors, install only to a covered Class A GFCI protected receptacle that is weatherproof with the power unit connected to the receptacle. If one is not provided, contact a qualified electrician for proper installation.

Ensure that the power unit and cord do not interfere with completely closing the receptacle cover.

WARNING: Risk of Fire. Installation involves special wiring methods to run wiring through a building structure. Consult a qualified electrician.

- This product is for decoration only and is not a toy. Small parts and choking hazard. Use caution with children under the age of 14.
- Do not position the decoration near candles, sources of heat, or in direct sunlight.
- The decoration cannot be connected to the power supply directly.
- Decoration should be on a level, stable surface to prevent it from falling over.
- This product is fragile and should be assembled with care.
- Surface washable only.
- Please follow the steps and requirements specified in the instruction to ensure safety and reliability during the installation.

WARNING

DO NOT TURN ITEM ON UNTIL YOU HAVE COMPLETELY FINISHED ASSEMBLY.

STAY CLEAR OF ITEM WHILE OPERATING.

DO NOT PLACE ITEM ON UNEVEN GROUND.

DO NOT PLACE WEIGHT ON ITEM WHILE IN OPERATION.

Storage tips: We suggest saving the carton for storing your decorative figure. Store in a cool, dry area where the temperature does not exceed 100°F.

1-YEAR LIMITED WARRANTY

"Limited" Warranty Program

For a period of one (1) year after purchase, Haunted Hill Farm ("Manufacturer") will either repair or replace defective components in accordance with this Limited Warranty.

Sales and use taxes, plus shipping and handling charges are the responsibility of the consumer.

This warranty is between Manufacturer and the original purchaser and is valid only when accompanied by the original purchaser's sales receipt showing original date of purchase and location of purchase. Replacements under this warranty revert back to the date of original purchase for future warranty.

Manufacturer or its authorized dealer can accept or reject warranty claims based on its findings. This warranty applies in normal residential use only, where an issue with the product is due to a defect in material or workmanship. Manufacturer can make substitutions as required of materials, components, and sub-components of comparable value and utility. This warranty is limited to product repair or replacement (to be determined solely by Manufacturer). Warranty return is limited to only the single affected component.

This warranty covers only manufacturing defects and does not cover normal wear and tear, abuse or misuse, including: water damage, chemical damage, exposure to extreme heat or cold, abrasion or excessive weight. This product is intended to be used with standard ornaments only. This warranty is invalid if the product is not used for intended purpose. Manufacturer disclaims liability for any aspect of installation and any inconvenience caused by a defective part or component.

Certain items are not covered by this warranty. These include, but are not limited to the following:

1. Components subjected to abuse, including abuse intended to simulate failure.
2. Damages caused by retailer, shipper or installation crew (such as scratches, dents, tears, etc.).
3. Any part which merely exhibits normal wear yet functions essentially as new, including stretching of materials and stitching.
4. Tears, punctures, scratches or any damage caused by improper installation or use.
5. Items sold "as is" or floor models.

To make a claim, send a copy of the original sales receipt along with a brief description of the problem to the email address below. Please include your email address and daytime telephone or cell phone #. All items maybe charged actual freight and handling costs. Repairs or replacement will be made at the Manufacturer's option.

THIS IS THE ENTIRE EXCLUSIVE EXPRESS LIMITED LIABILITY. THE MANUFACTURER NEITHER MAKES NOR IS RESPONSIBLE FOR ANY OTHER WARRANTIES, EITHER EXPRESS OR IMPLIED, INCLUDING THOSE OF RETAILING DEALERS. THIS EXCLUSIVE REMEDY IS LIMITED TO RECEIPT OF A CREDIT IN CONNECTION WITH THE REPAIR OR REPLACEMENT OF ANY PRODUCT OR COMPONENT DEEMED TO BE DEFECTIVE UNDER THE TERMS AND CONDITIONS AS STATED IN THIS WARRANTY. NEITHER HAUNTED HILL FARM, THE PRODUCT MANUFACTURER NOR ITS AGENTS SHALL BE LIABLE IN ANY CASE FOR INCIDENTAL, INDIRECT, SPECIAL OR CONSEQUENTIAL DAMAGES RESULTING FROM THE USE OF THIS PRODUCT OR ARISING OUT OF ANY BREACH OF THIS WARRANTY OR NEGLIGENCE EVEN IF IT HAS BEEN ADVISED OF THE POSSIBILITY OF SUCH DAMAGES. EXCEPT AS OTHERWISE MAY BE REQUIRED BY LAW, THERE ARE NO OTHER EXPRESS OR IMPLIED WARRANTIES OTHER THAN THE WARRANTY DESCRIBED HEREIN, AND ALL OTHER WARRANTIES, INCLUDING ANY IMPLIED WARRANTY OF MERCHANTABILITY OR FITNESS FOR A PARTICULAR PURPOSE ARE EXPRESSLY DISCLAIMED.

Boo@HauntedHillFarm.com