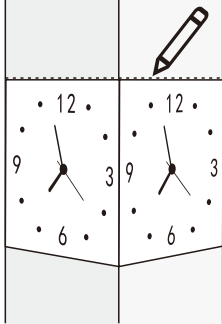


Corner Clock Installation Instructions

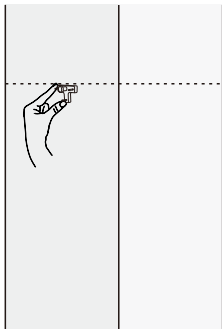
Step 1: Make a mark

Pick up the clock and place it parallel and snug against the wall where you want to install it, then make a mark.

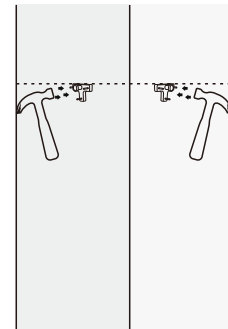


Step 2: Install traceless nails on each side of the wall

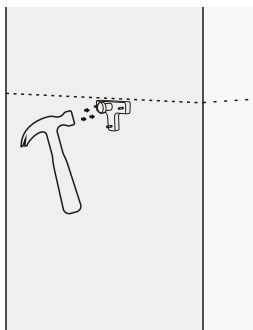
First: Fix the traceless nails in place by hand at the marked locations;



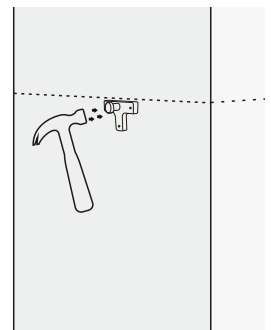
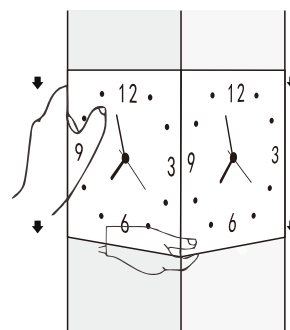
Second: Tap gently with a hammer to drive the traceless nails into the wall;



Third: Please test by nailing half of the traceless nails into the wall first;



Finally: Before nailing the traceless nails completely into the wall, please hang the clock and make sure it is snug and parallel to the wall.



Step 3: Install the clock

Finally, hang the clock parallel and snug to the wall and onto the traceless nails from top to bottom. Once installed, the clock fits snugly against the wall. If the clock does not fit snugly against the wall, the nails were not nailed properly.

If you have any concerns or questions, please contact us at contact@epdeisgnlab.com.