

ASSEMBLY INSTRUCTIONS

DRESSER

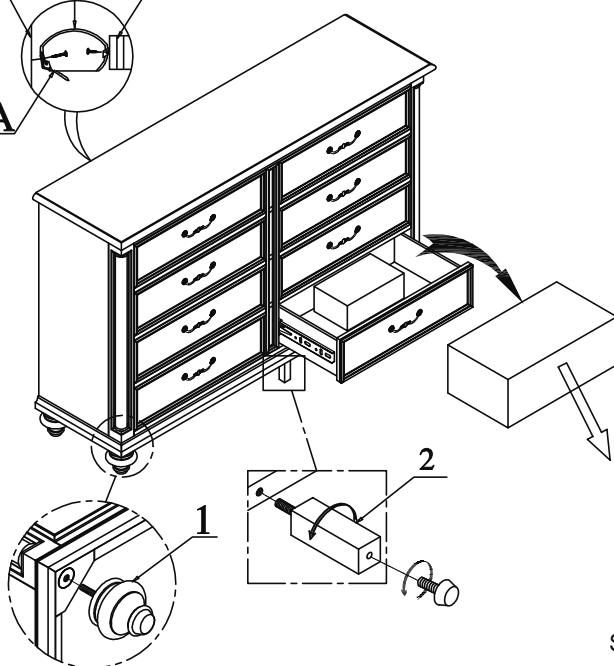
Thank you for purchasing this quality product. Be sure to check all packing material carefully for small parts which may have come loose inside the carton during shipment. Identify and count all parts and compare with the Parts List below.

! For items use on wooden floor, hard surfaces or carpets, it is recommended to Install protective pads under all legs and supports to avoid/ prevent from damages/ scratches and discoloration.

Furniture Tipping Restraint

Wall Top

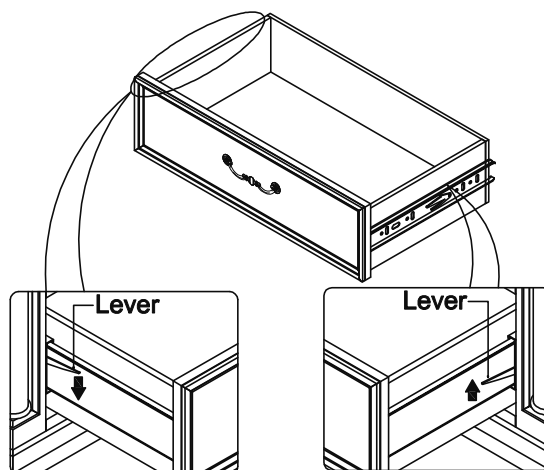
A



STEP 1. ASSEMBLE THE LEGS

- pull out the box of legs from lowest drawer
- screw in the legs at the bottom of the Dresser by using hand.

REMOVE/REPLACE THE DRAWERS



Push down on the left guide

Pull up on the right guide

STEP 2. Install the Furniture Tipping Restraint

- 1.Pull out the drawer until it stops.
2. Locate the locking clips near the back of each full-extension roller guide rail. Using two hands, push down on the left clip and lift up on the right clip to release the clips. Pull the drawer all the way out from the case.

PARTS LIST

NO	DRAWING	Q' TY	DESCRIPTION
1		4	BUN FEET
2		1	CENTER SUPPORT LEG

A FURNITURE TIPPING RESTRAINT

Strap	Brackets	Screw (Ø8x1")	Screw (Ø8x5/8")
1pc	2pcs	1pc	1pc