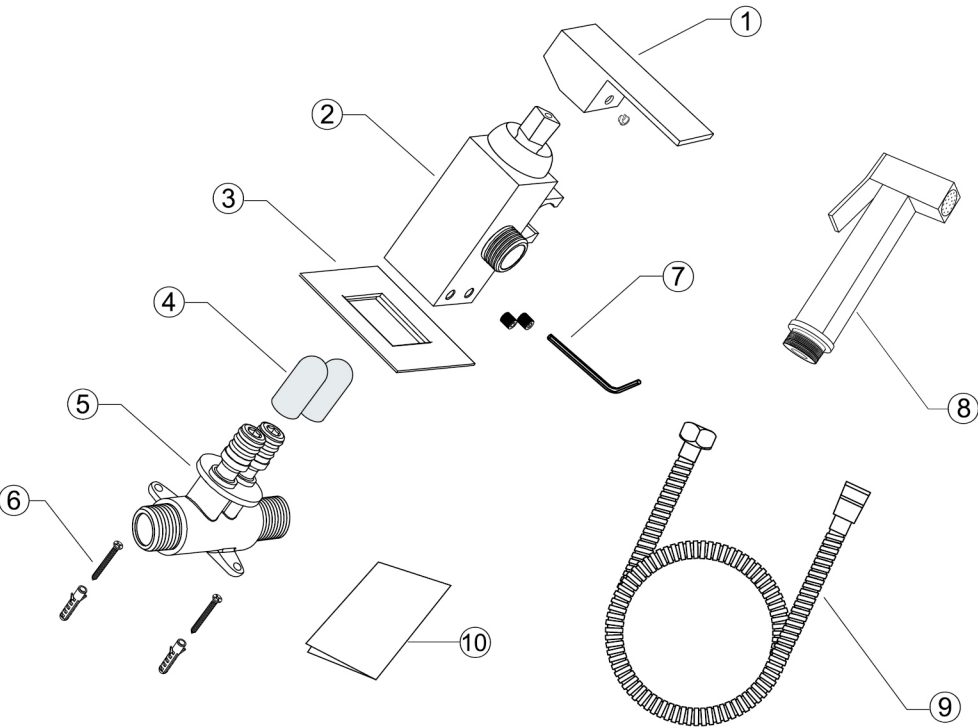


# INSTALLATION INSTRUCTIONS

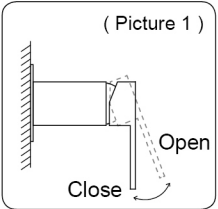


## Parts list

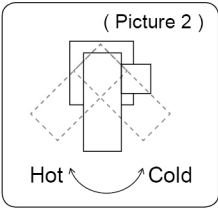
| NO | NAME            | QTY | NO | NAME          | QTY |
|----|-----------------|-----|----|---------------|-----|
| ①  | Handle          | 1   | ⑥  | Screw bag     | 1   |
| ②  | Mixer body      | 1   | ⑦  | Allen key     | 2   |
| ③  | Decorated cover | 1   | ⑧  | Bidet sprayer | 1   |
| ④  | Protected cover | 2   | ⑨  | Bidet hose    | 1   |
| ⑤  | 3 Ways body     | 1   | ⑩  | Manual        | 1   |

## Instructions for use

1. Turn on the faucet as picture 1 shows. The greater the handle angle, the greater the water flow; Conversely, the smaller the handle angle, the smaller the water flow, until it is closed.



2. Turn on the faucet. Adjust handle to left to get more hot water; Adjust handle to right to get more cold water. Shown as picture 2.



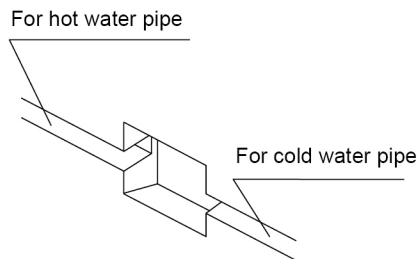
## Cautions:

- 1.Before installation, all water lines must be flushed at least 60 seconds to remove any foreign material so that the foreign material will not damage the cartridge.
- 2.After installation, please check if all connections were well installed, and make sure there are no leakage.
3. Use water and soft cloth to clean the faucet.
4. Use a mild liquid detergent for cleaning, do not use abrasive detergent that may scratch or dull the surface.

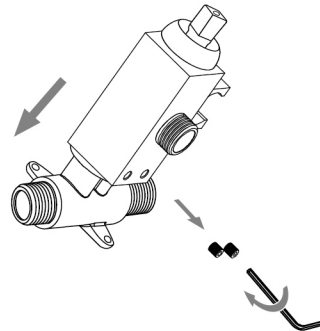
**Warning:**  
You can seal the wall only when there are no any leakage after installing the 3 ways body and water pipe.

# INSTALLATION INSTRUCTIONS

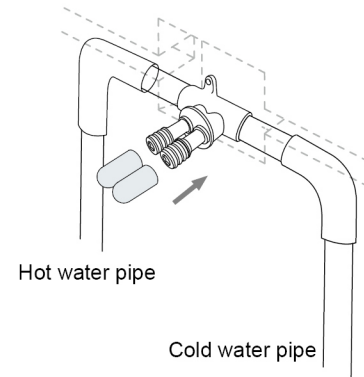
1. Use special tools to chisel holes on wall for installing 3 ways body, hot and cold water pipe. Note: Recommended depth for installing 3 ways body before tiling tiles: 35-40mm (or 1.38"-1.57").



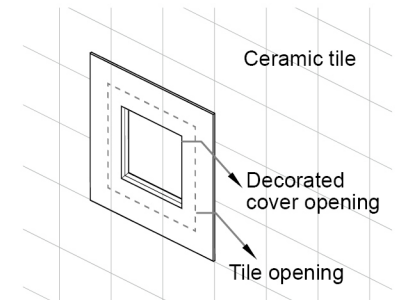
2. Loosen screws with allen key then take off the 3 ways body.



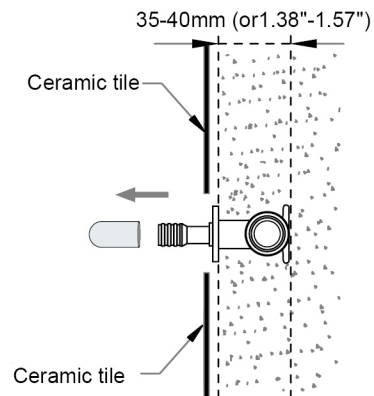
3. Put the plastic protected cover on the thread side of 3 ways body; Connect water pipes to 3 ways body as picture shows, then fix the 3 ways body with screws.



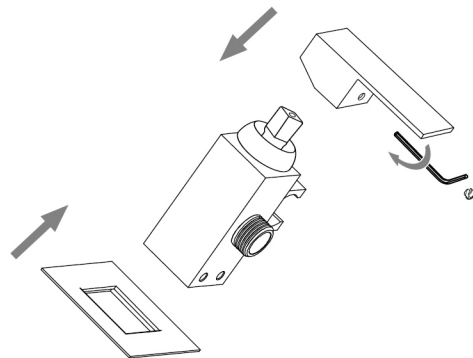
4. Prepare tiles. Note: Tile opening should be bigger than decorated cover opening at least 15 mm (or 0.59").



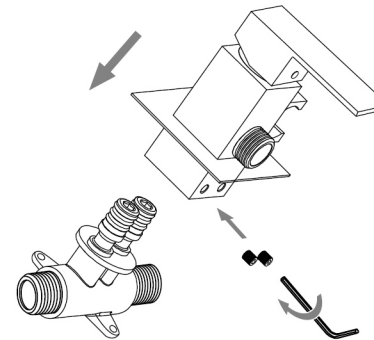
5. Switch on/off the cartridge, check all connectors without any leakage. Then seal the wall with tiles.



6. Put decorated cover on the mixer body; fix handle with allen key as picture show



7. Connect mixer body to the 3 ways body then fix it with screws.



8. Connect bidet hose to mixer body and bidet sprayer then put bidet sprayer to holder.

