



Liberty Furniture
INDUSTRIES, INC

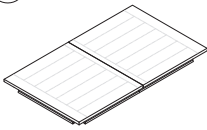

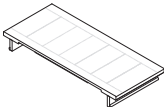
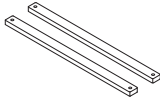
ASSEMBLY INSTRUCTION

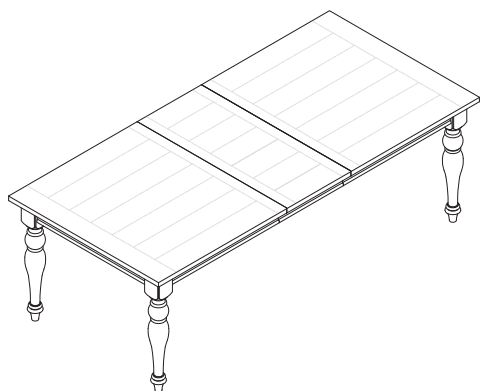
ITEM#: **615-T4290**

DESCRIPTION: **RECTANGULAR LEG TABLE**

Thank you for purchasing this quality product. Be sure to check all packing material carefully for small parts which may have come loose inside the carton during shipment. Identify and count all parts and compare with the parts List Below:




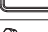




PART LIST:

①	②	③	④
			
TABLE TOP:1PC	LEGS: 4PCS	LEAF:1PC	SUPPORT BAR:2PCS

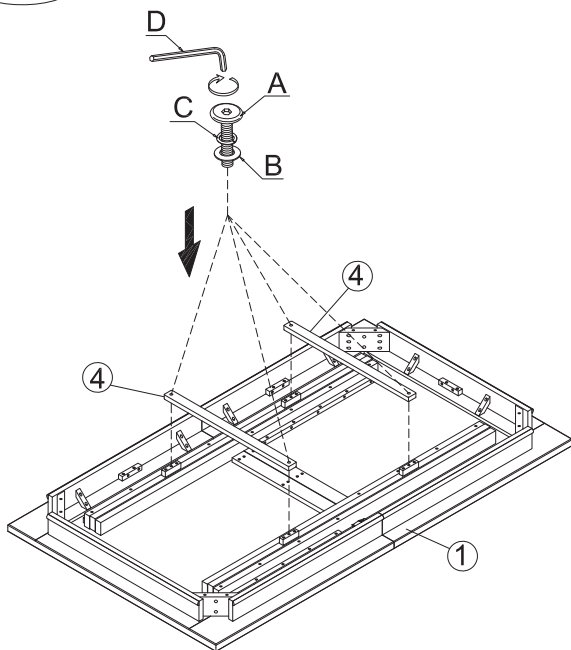


⑤

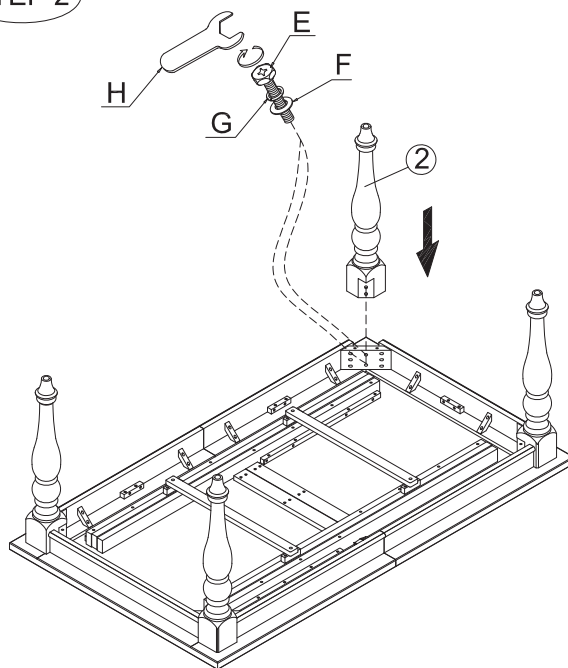
HARDWARE LIST

NO.	Drawing	Description	Q'ty
A		Bolt (Φ1/4"×1-1/2")	4pcs
B		Flat washer (Ø1/4"×19mm)	4pcs
C		Spring washer (Ø1/4")	4pcs
D		Allen wrench (4mm)	1pc
E		Bolt (Φ5/16"×2-1/4")	8pcs
F		Flat washer (Ø5/16"×23mm)	8pcs
G		Spring washer (Ø5/16")	8pcs
H		Ø5/16" Wrench(12mm)	1pc

STEP 1



STEP 2



CLEANING INSTRUCTION

Page 1/2 Use a soft dry cloth to clean and remove furniture polish.

Made in VietNam



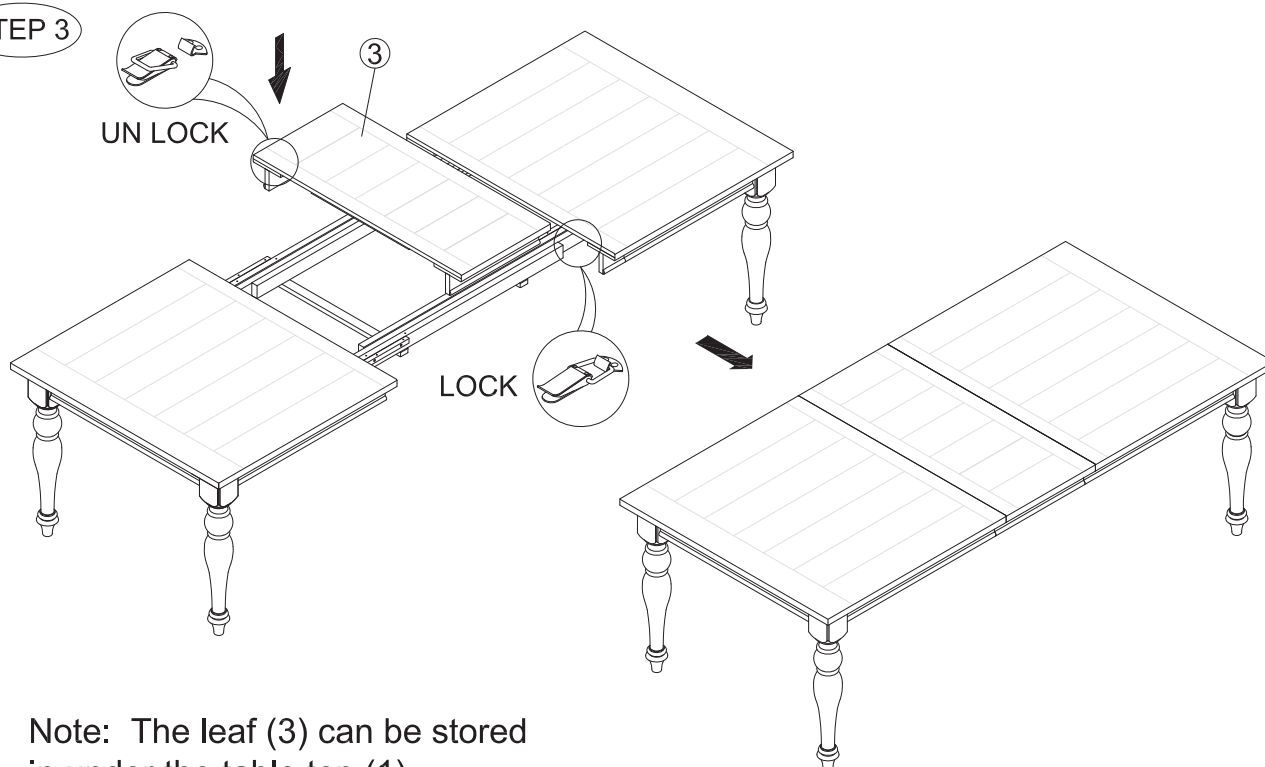
Liberty Furniture
INDUSTRIES, INC

ASSEMBLY INSTRUCTION

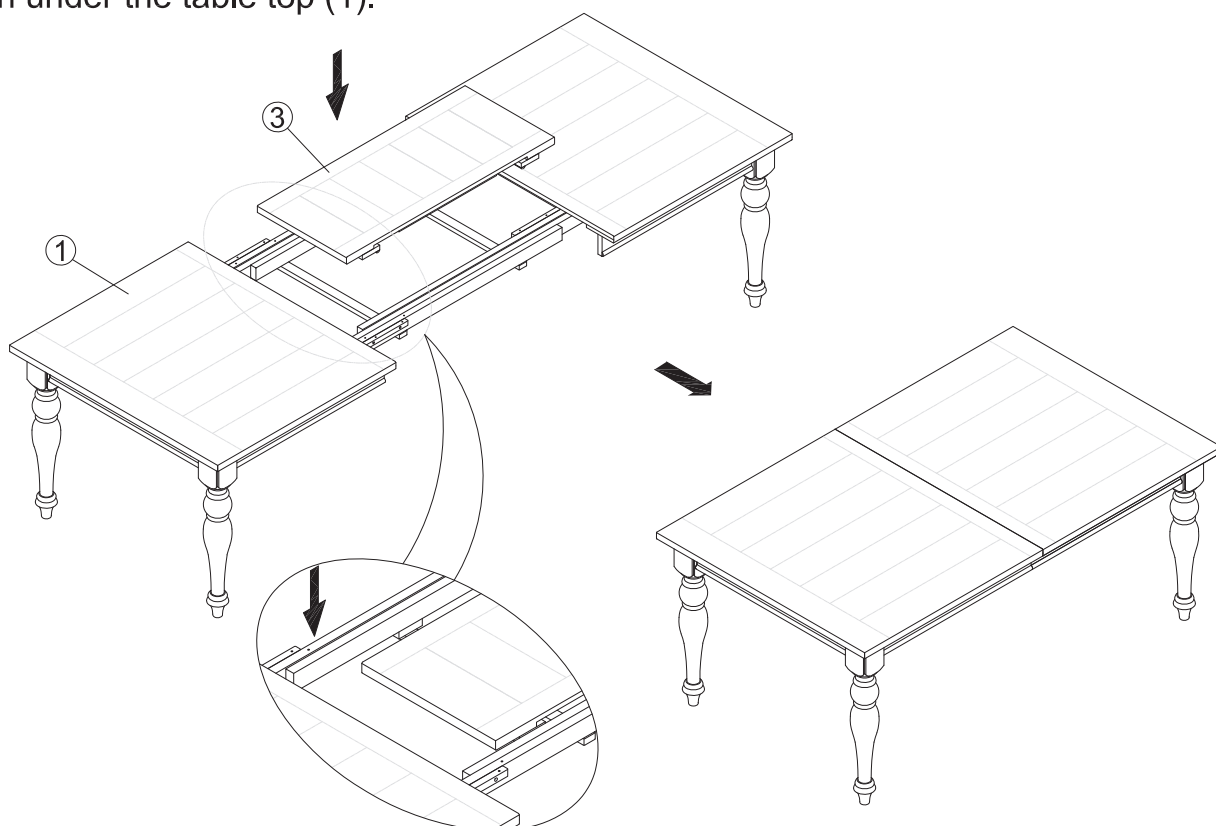
ITEM#: **615-T4290**

DESCRIPTION: **RECTANGULAR LEG TABLE**

STEP 3



Note: The leaf (3) can be stored in under the table top (1).



CLEANING INSTRUCTION

Page 2/2 Use a soft dry cloth to clean and remove furniture polish.

Made in VietNam