



Liberty Furniture
INDUSTRIES, INC

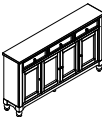


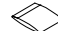
ASSEMBLY INSTRUCTION

ITEM#: **615-HB7242/HB7242-B**

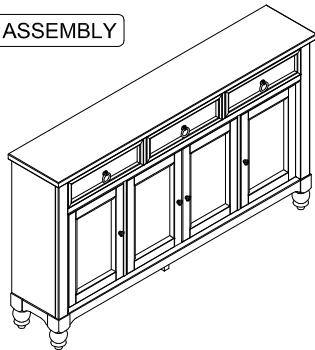
DESCRIPTION: **HALL BUFFET**
HALL BUFFET-BLACK

Thank you for purchasing this quality product. Be sure to check all packing material carefully for small parts which may have come loose inside the carton during shipment. Identify and count all parts and compare with the parts List Below:

PART LIST:

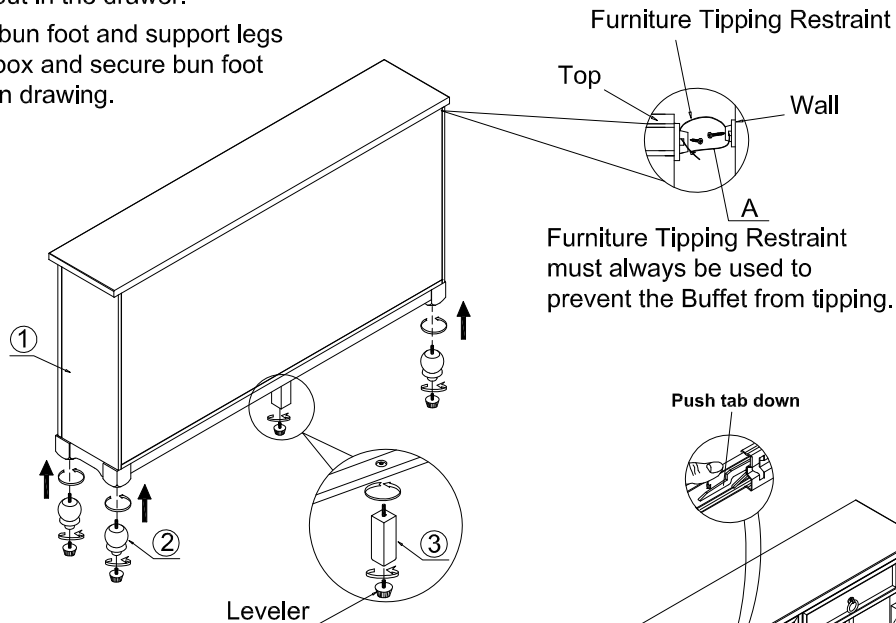
①		②		③	
Hall Buffet: 1PC		BUN FOOT: 4PCS		SUPPORT LEGS: 1PC	
④					
HARDWARE LIST					
NO.	Drawing	Description			Q'ty
A		Furniture Tipping Restraint			1 Set

FINISHED ASSEMBLY



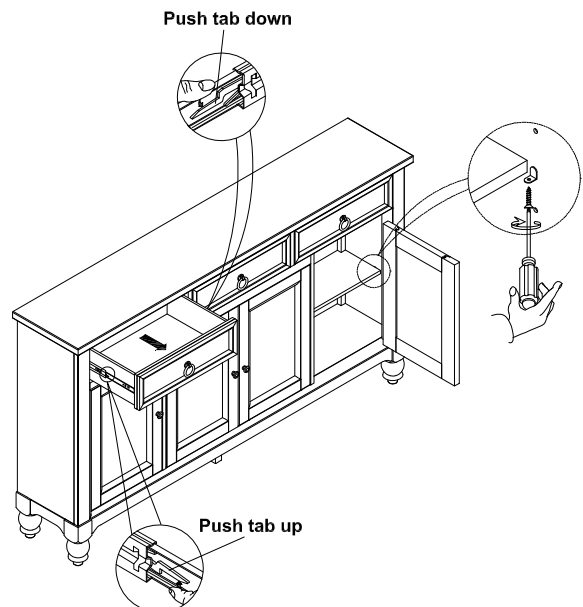
Note: The bun foot and support legs are put in the drawer.

1. Remove bun foot and support legs from inner box and secure bun foot as shown on drawing.



Furniture Tipping Restraint must always be used to prevent the Buffet from tipping.

To remove drawer, simultaneously pull tab up on one side and push down on the other and remove drawer.



CLEANING INSTRUCTION