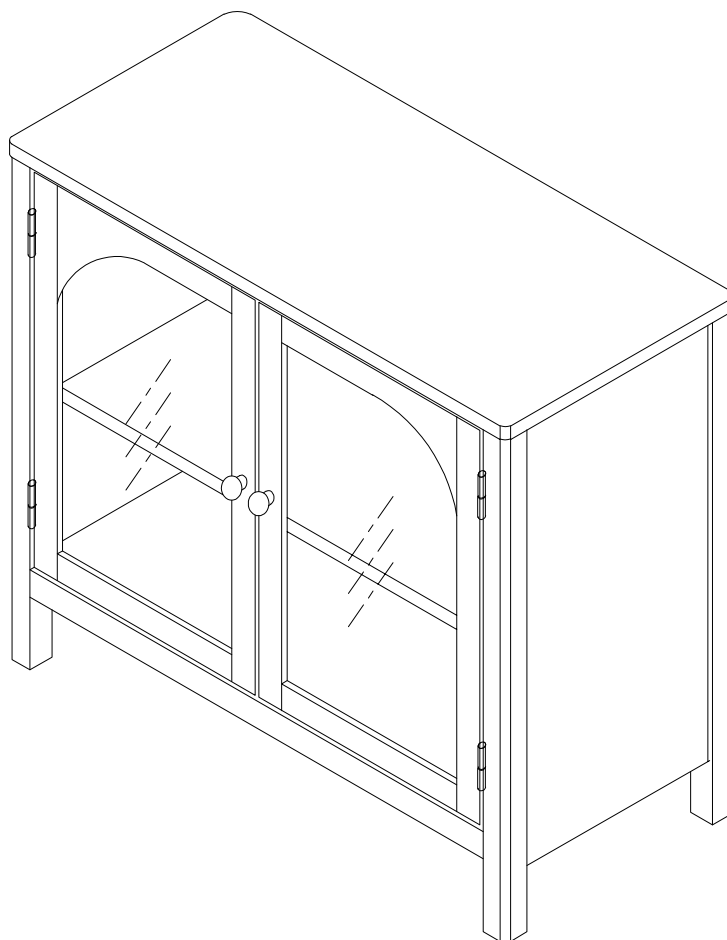


Let's build the

# Mason Storage Unit

SKU 71601



**Scan me!**

Free Lifetime  
Warranty

nathan james

25-0526-VN

# Ok, let's get rolling

This should be easy, just follow our instructions and you will be back to Netflix in no time.

## Estimated time for assembly



45:00

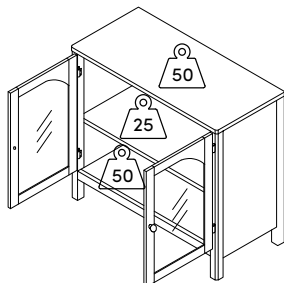
## What you need

- Some of your favourite bubbly or your preferred relaxant
- Use the packaging carton as a working surface to prevent product damage during assembly
- Phillips head screwdriver
- 1/4" Drill Bit

## Weight Limitation



100 lbs



## What's included

Description	Qty
A Top Panel	1
B Side Frame Panel (Left)	1
C Side Frame Panel (Right)	1
D Top Stretcher	1
E Bottom Stretcher	1
F Back Panel	2
G Bottom Panel	1
H Shelf	1
I Door (Left)	1
J Door (Right)	1
K Top Front Stretcher	1

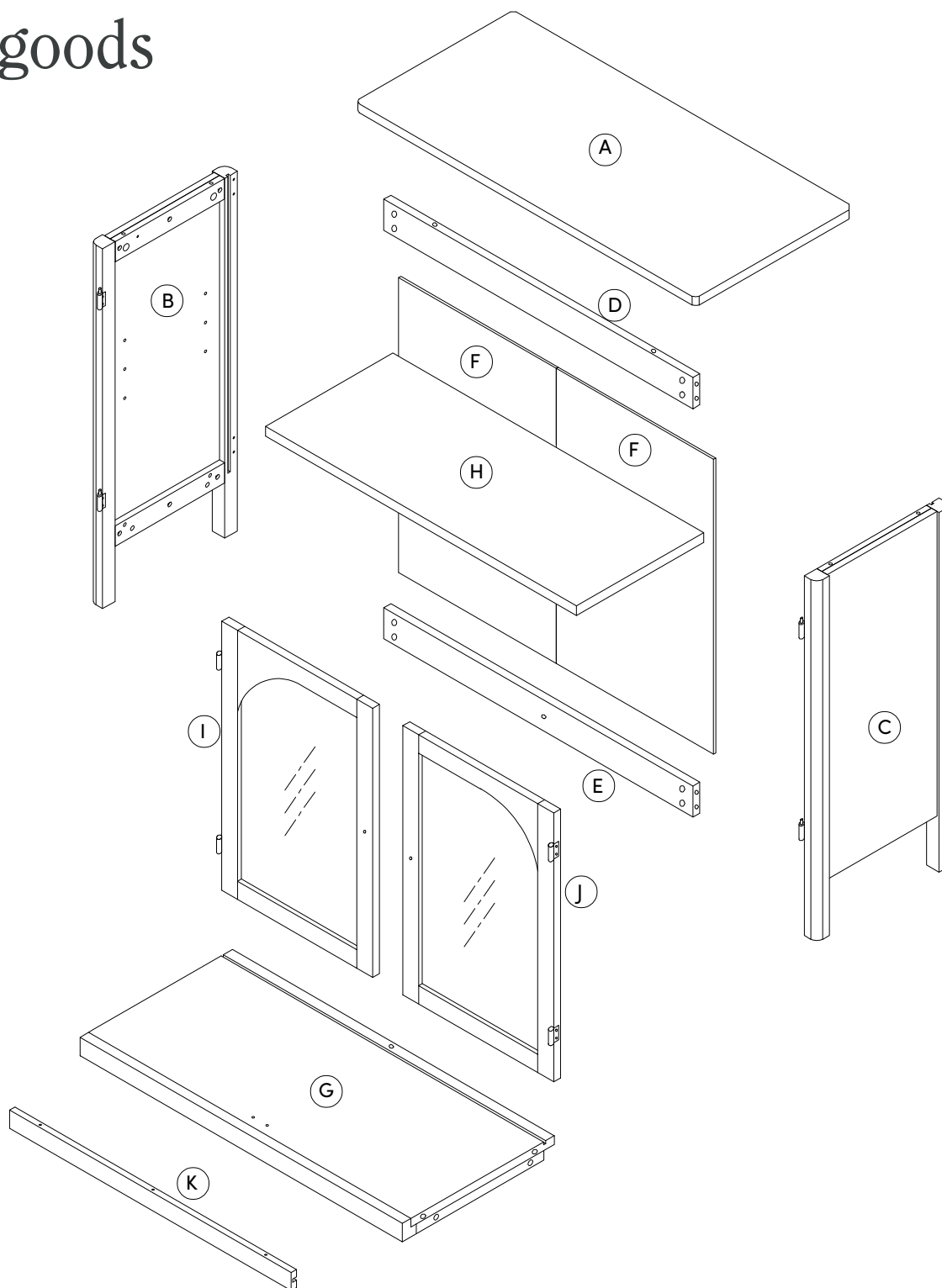
Scan me!

Free Lifetime  
Warranty



Toll-free at 1-866-619-1004  
Help@nathanjames.com  
Nathanjames.com/help

# The goods



## IMPORTANT

1. Do not tighten bolts / screws completely until all bolts / screws are lined up and inserted into holes.
2. Do not over tighten screws and bolts to avoid stripping.
3. Please use hand tools to assemble this product.

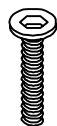


## What's included

Description		Qty
1	¼" x 32mm Hex Button Head Bolt	4
2	¼" x 10mm Spring Washer	4
3	¼" x 13mm Flat Washer	4
4	¼" x 50mm Hex Button Head Bolt	1
5	¼" x 10mm Barrel Nut	1
6	Allen Key	1
7	M8*30mm Wooden Dowel (Extra 1pc)	5
8	Cam Bolt	16
9	Cam Lock (Extra 1pc)	17
10	Shelf Pin	4
11	M3*12mm Screw	4
12	Knob	2
13	5/32" x 22mm Bolt	2
14	Plastic Bracket (for Anti-Tip)	2
15	Wall Anchor (for Anti-Tip)	2
16	M4*38mm Screw (for Anti-Tip)	2
17	M3.5*15mm Screw (for Anti-Tip)	2
18	Plastic Tether (for Anti-Tip)	1
19	Adjustable Leveler (Extra)	2
20	Magnetic Catch	3
21	M3.5*15mm Screw	6
22	M4*35mm Screw	3

# The goods

1



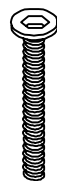
2



3



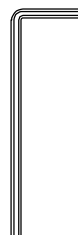
4



5



6



7



8



9



10



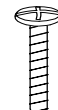
11



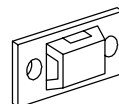
12



13



14



15



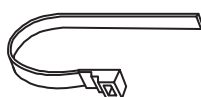
16



17



18



19



20



21

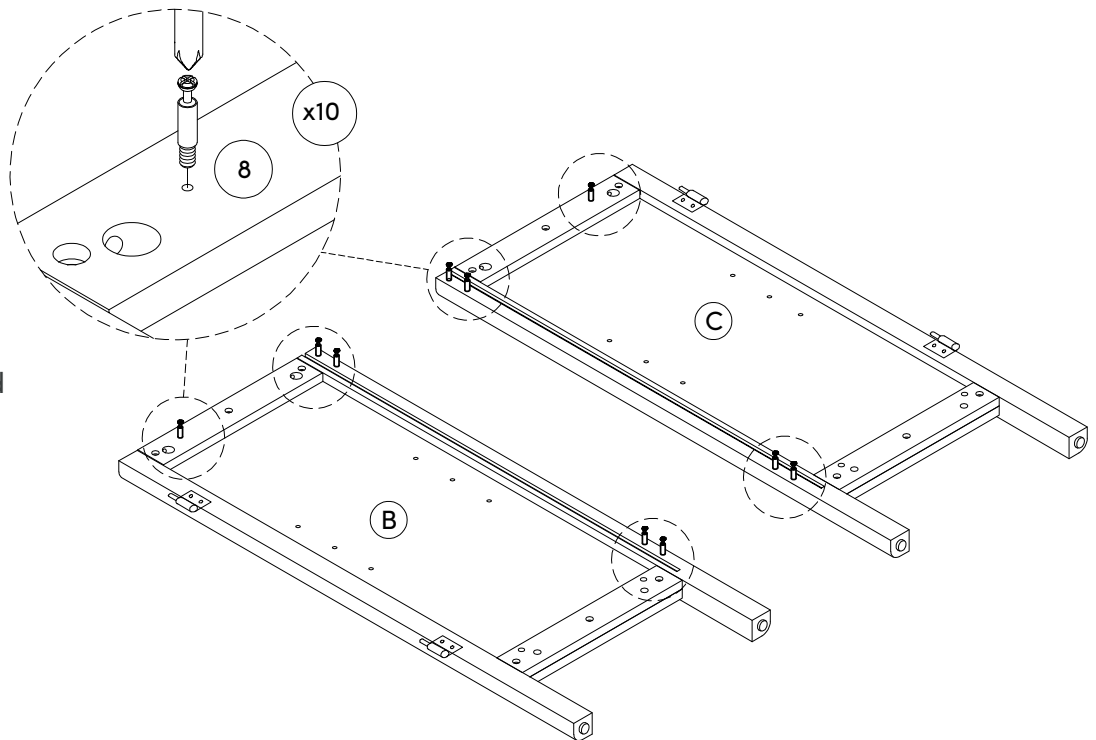


22



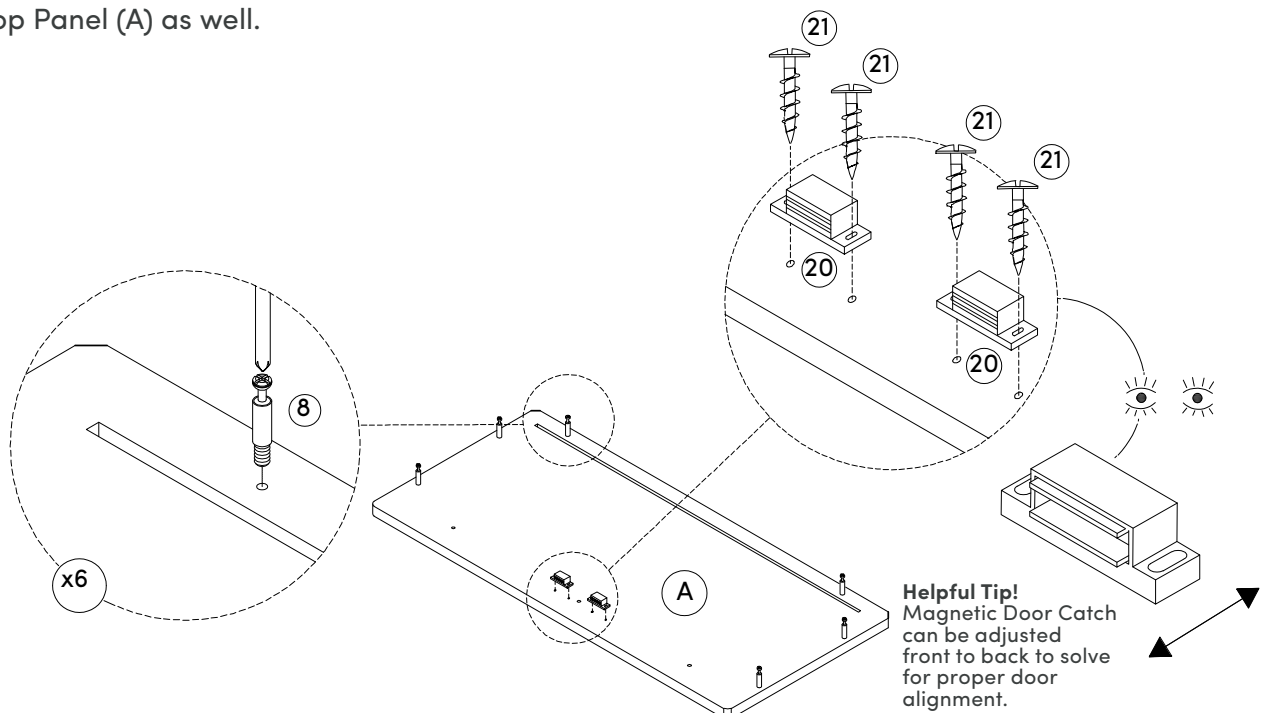
# Step 1

Alright, let's get this thing fired up! First things first, insert the Cam Bolts (8) into the Side Frame Panel (Left) (B) and Side Frame Panel (Right) (C). Tighten using a Phillips head screwdriver (not included).



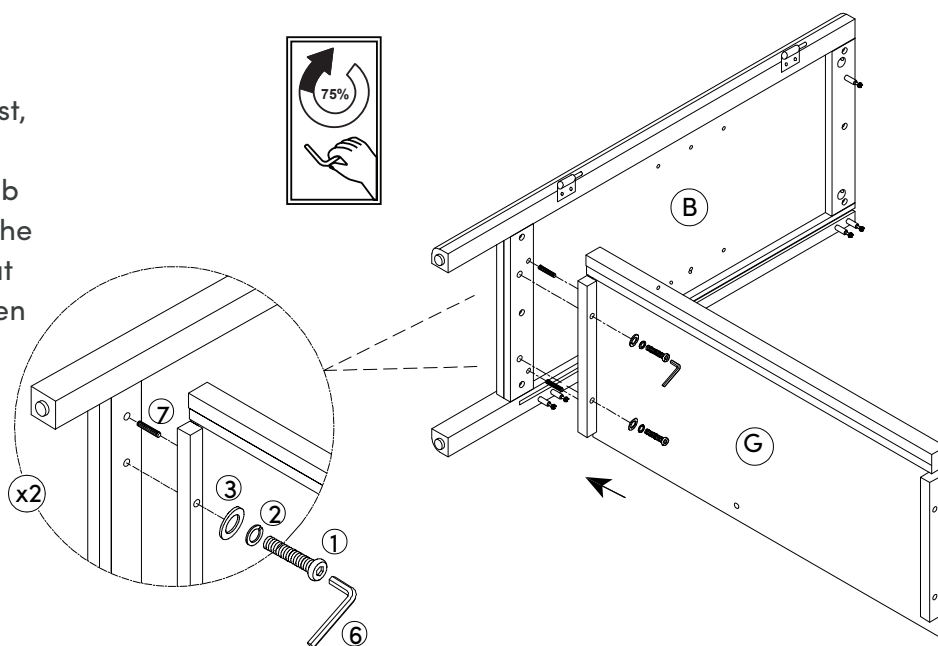
# Step 2

Next, attach the Magnetic Catches (20) to the Top Panel (A) using the M3.5\*15mm Screws (21). Then insert the Cam Bolts (8) into the Top Panel (A) as well.



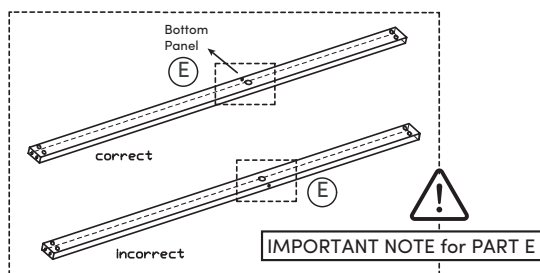
# Step 3

Now it's time to attach Side Frame Panel Left (B) and the Bottom Panel (G) together. First, insert the Wooden Dowels (7) into the designated holes. Grab the Hex Button Head Bolt (1), the Spring Washer (2), and the Flat Washer (3) together and tighten them into place with the Allen Key (6) (x2)

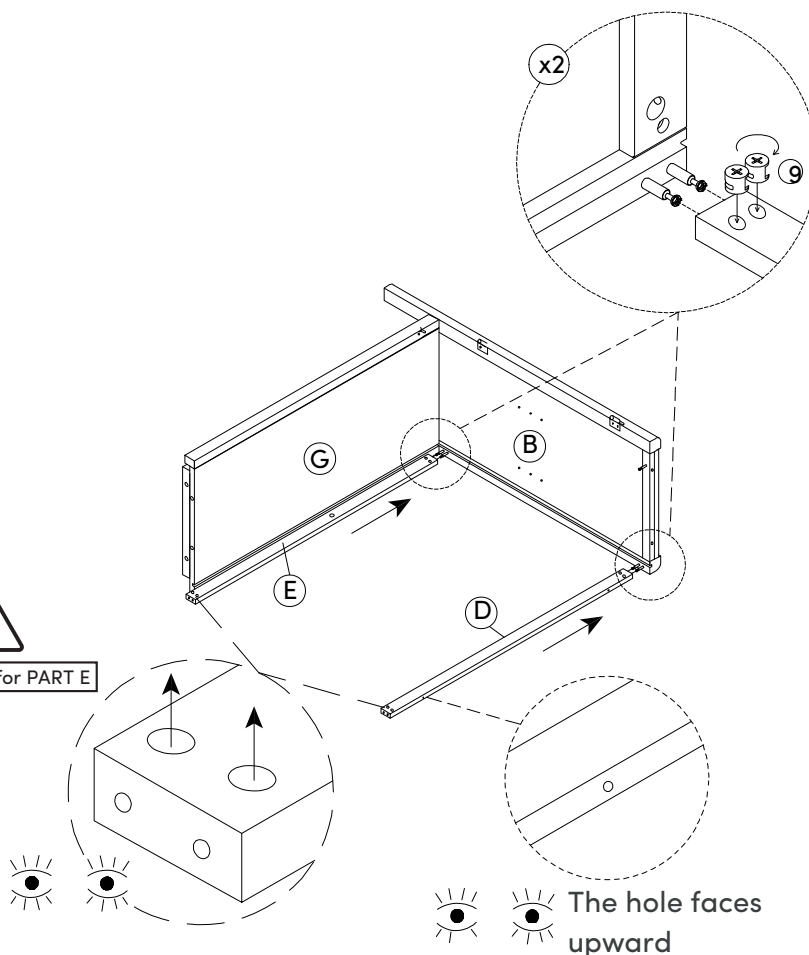


# Step 4

Next attach the Bottom Stretcher (E) and the Top Stretcher (D) to the parts you have been working on. Double check to make sure the holes on the stretchers are facing upwards. Then you will use the Cam Bolts (8) and the Cam Locks (9) to secure the pieces together.



See following page for Cam Lock Assembly Quick Guide.



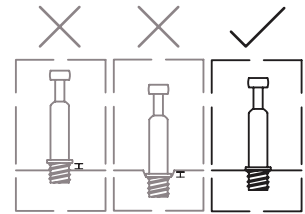
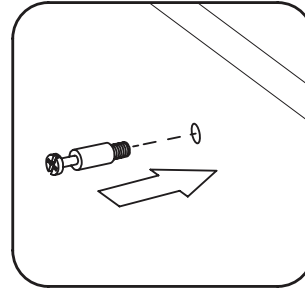
# How to use cam locks

Did you know?

Cam locks are used to join two panels together, usually the edge of one to the flat side of another.

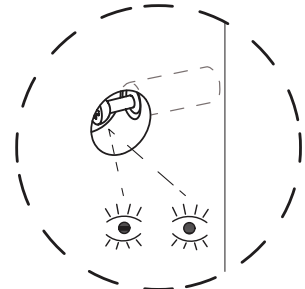
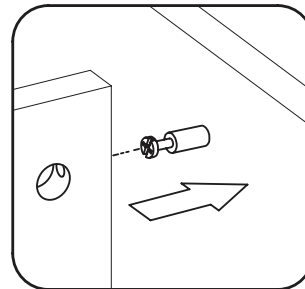
First, your cam bolt (or cam pin) will need to be properly inserted into the flat side of the board.

Important Note: Only tighten the cam bolt until it is secure. Do not over-tighten.



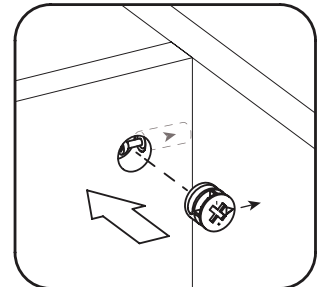
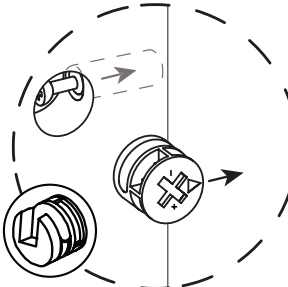
Next, you will fit the proper hole on the edge of the associated joining panel over the cam bolt.

Important Note: When installed properly, the head of the cam bolt will be visible through the larger hole on the side of the joining panel.



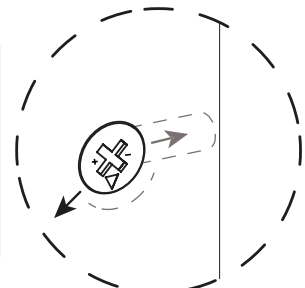
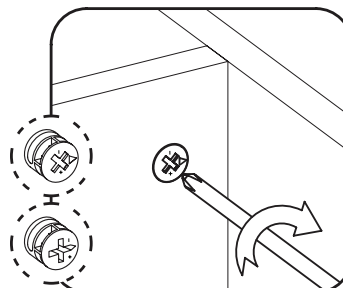
Next, you will notice the cam lock has a "C" shaped back. Commonly, an arrow on the front of the cam lock points in the same direction as the open section on back.

Using these as your cue, insert the cam lock into the large hole so the opening of the "C" fits over the head of the cam bolt.



Using a screwdriver, you will turn the cam lock until it stops, usually between 130° or 180°. You will feel the panels pulling closer until they are secured.

Important Note: Only turn the cam lock until the panels are fully engaged & feel secure. Turning too far may lead to hardware failure



Still having issues?

If a cam lock seems to be spinning in place or is not "catching" or pulling the panels together as expected, first remove the cam lock & try again while making sure that everything is properly positioned & oriented.

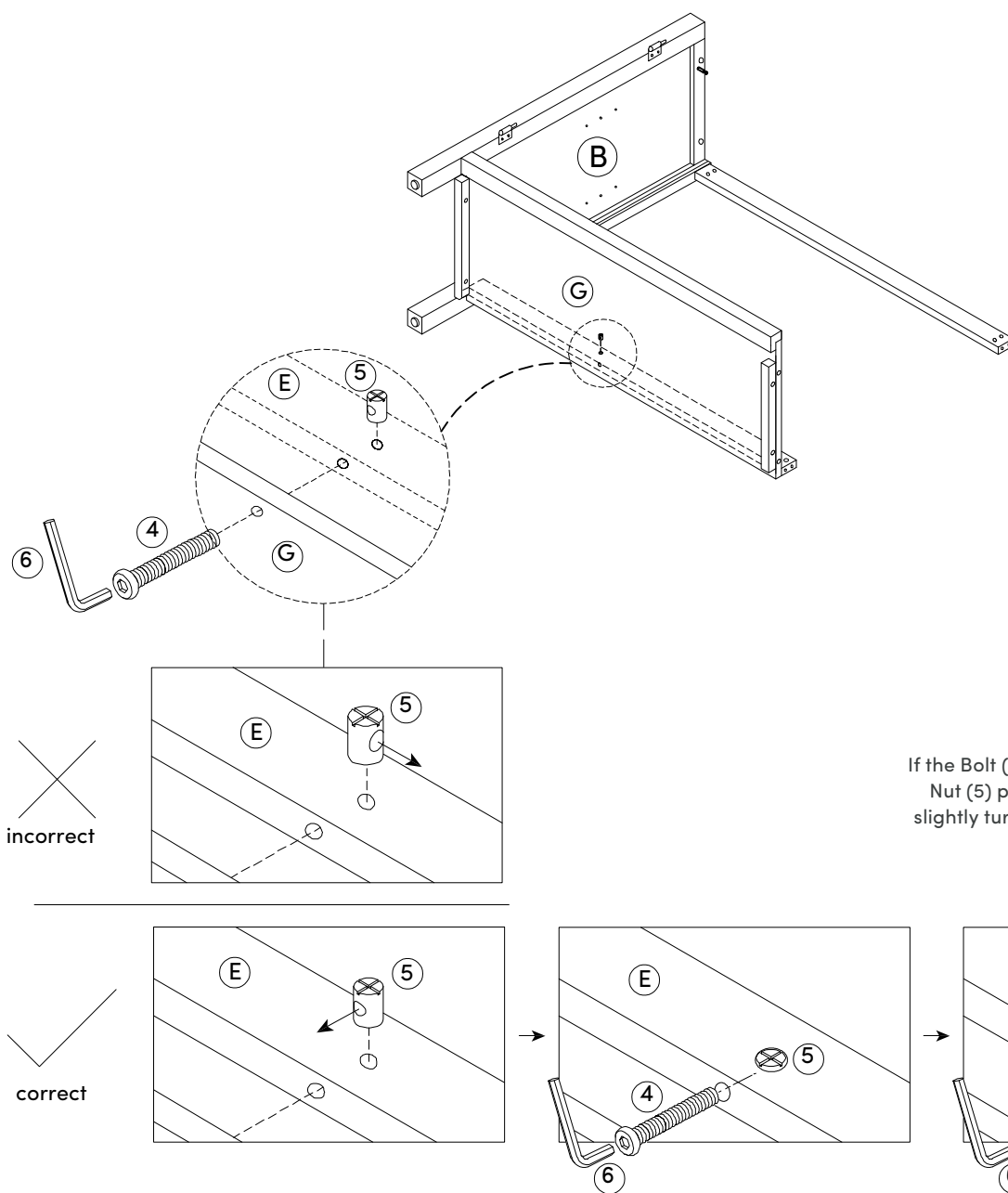
If you are still having issues getting things work ing as expected, first remove the cam lock then unscrew the cam bolt slightly (less than 1 complete turn) to see if that helps with the alignment of the cam lock & bolt.



# Step 5

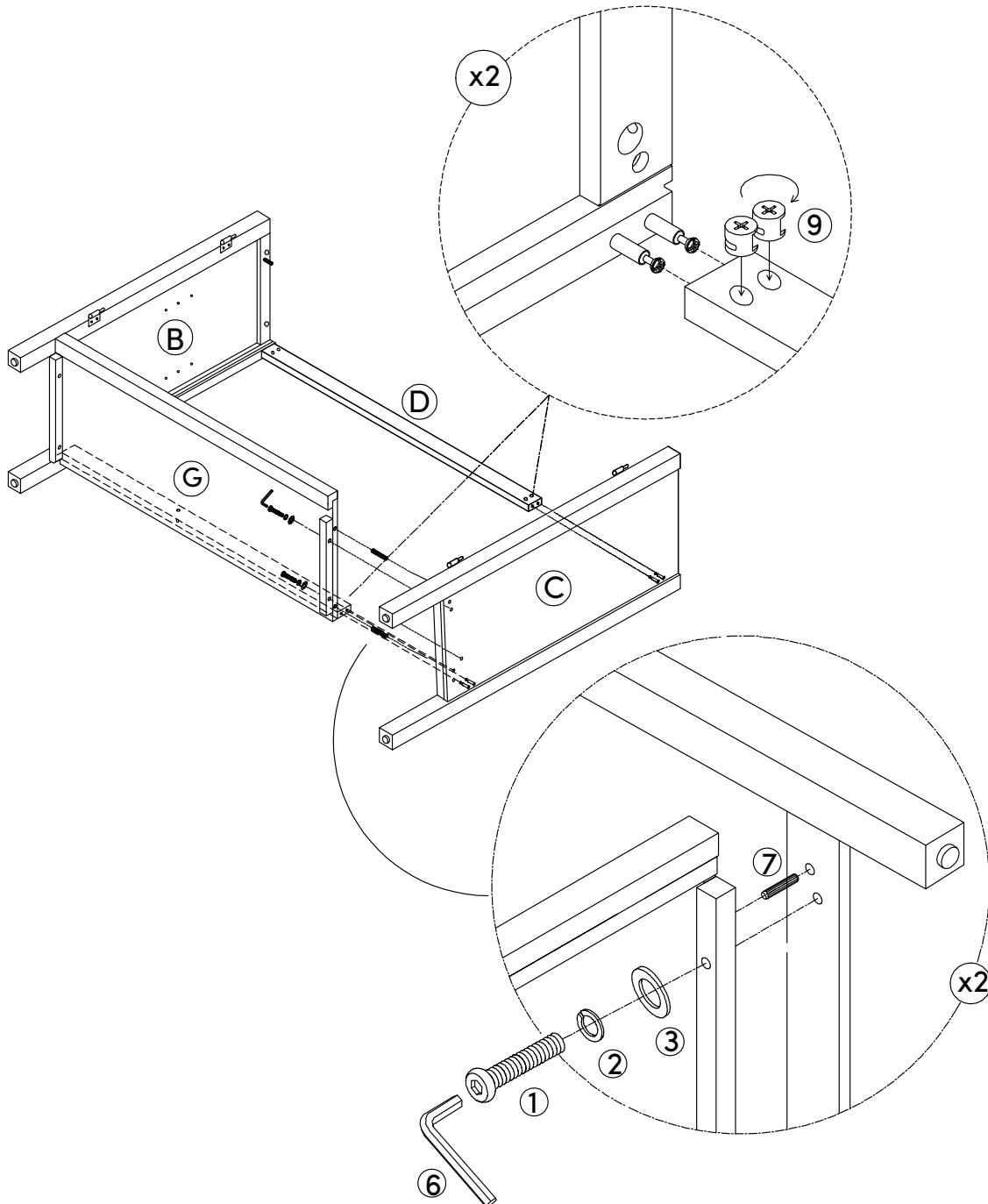
Next place the 1/4"x10mm(5) Barrel Nut into the designated hole on the Bottom Stretcher (E) and make sure they are facing the correct way.

Then insert the 1/4"x50mm Hex Button Head Bolt (4) through the Bottom Panel (G) and into the Barrel Nut (5) in Bottom Stretcher (E).



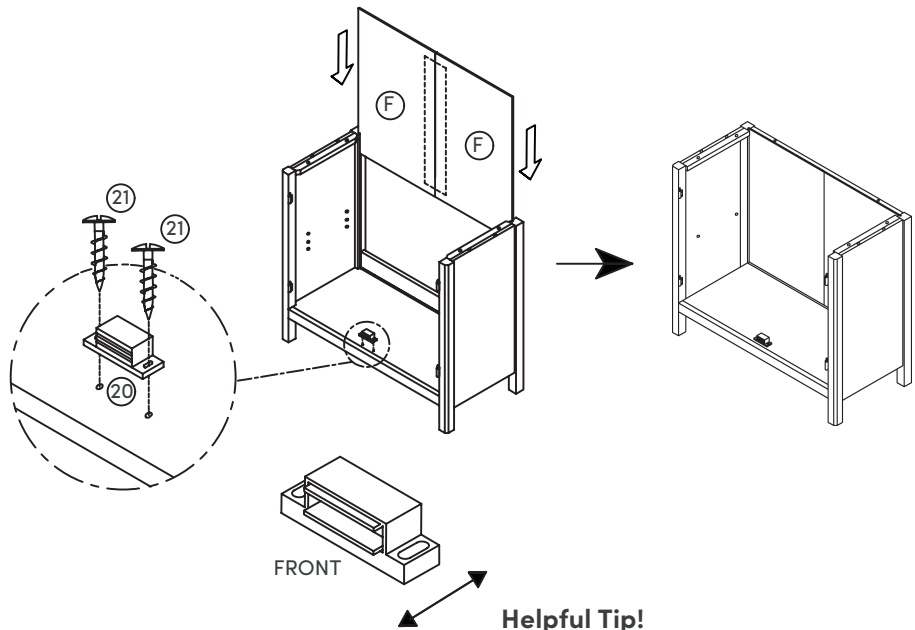
# Step 6

Now, attach the Side Frame Panel (Right) (C) to the Bottom Panel (G). Place a Flat Washer (3), Spring Washer (2), and then the 1/4" x 32mm Hex Button Head Bolt (1). Tighten using the provided Allen Key (6). Then, secure the Cam Bolts (8) with Cam Locks (12).



# Step 7

We made this step nice and easy for you. Slide the Back Panels (F) into the back of the cabinet frame. Then attach the Magnetic Catch (20) using two of the M3.5\*15mm Screws (21).

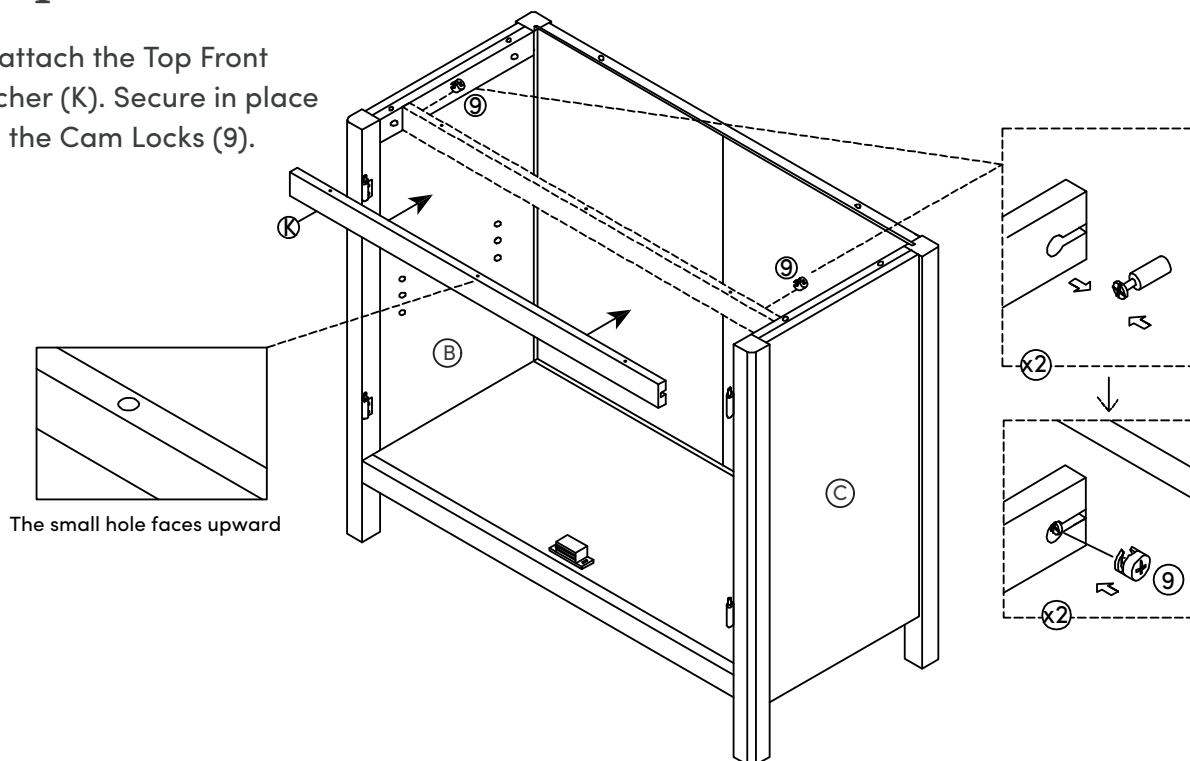


## Helpful Tip!

Magnetic Door Catch can be adjusted front to back to solve for proper door alignment.

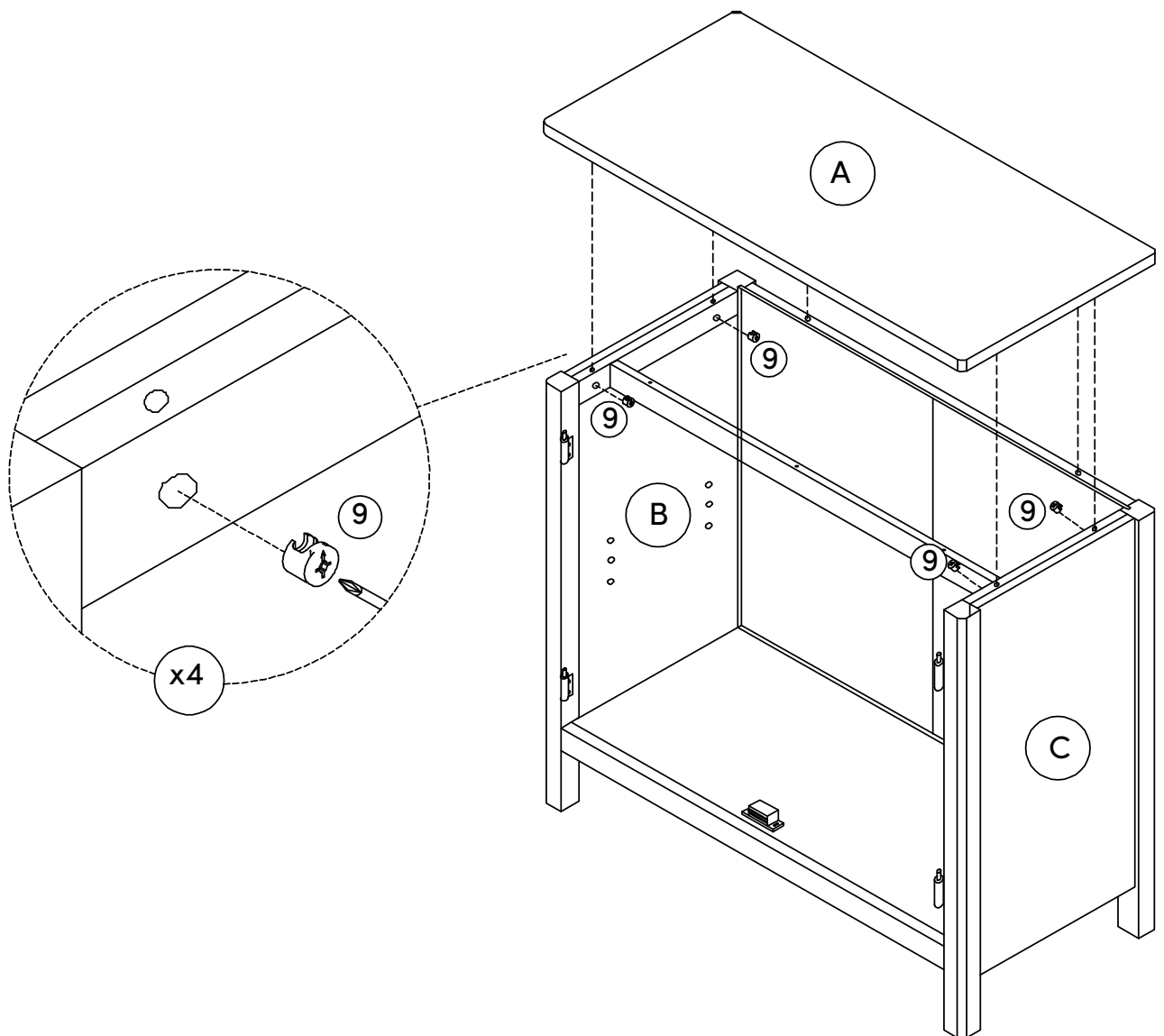
# Step 8

Now attach the Top Front Stretcher (K). Secure in place using the Cam Locks (9).



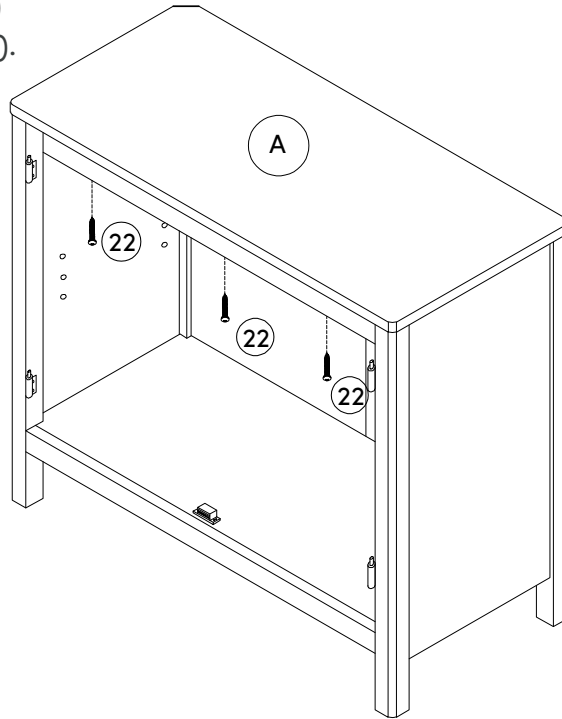
# Step 9

This thing is really starting to come together! Time to attach the Top Panel (A). Secure in place using the Cam Locks (9).



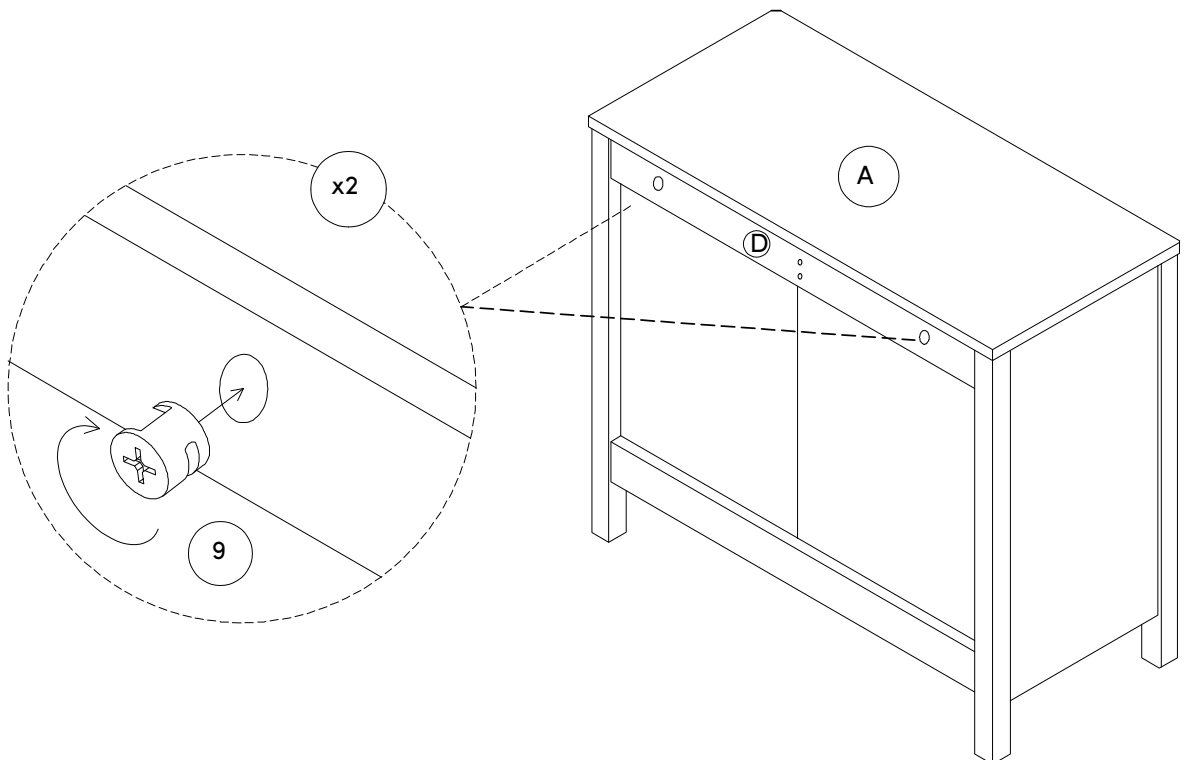
# Step 10

Locate the Top Front Stretcher (K)  
Secure the M4x35mm Screws (22).



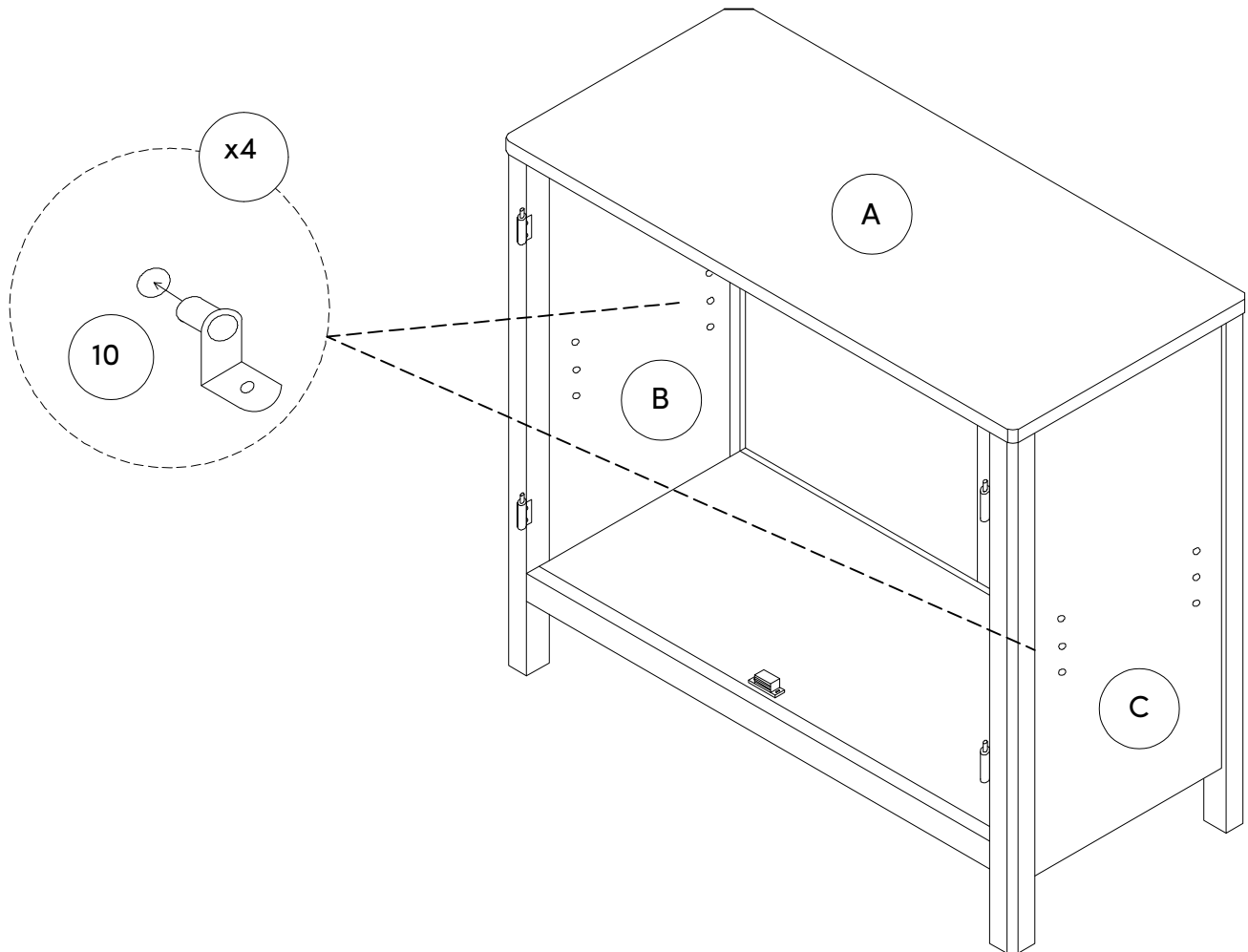
# Step 11

Next, secure the Top Panel  
(A) to the Top Stretcher (D)  
using the Cam Locks (9).



# Step 12

Another simple one for you. Insert the Shelf Pins (10) into the side panels at your desired shelf height.

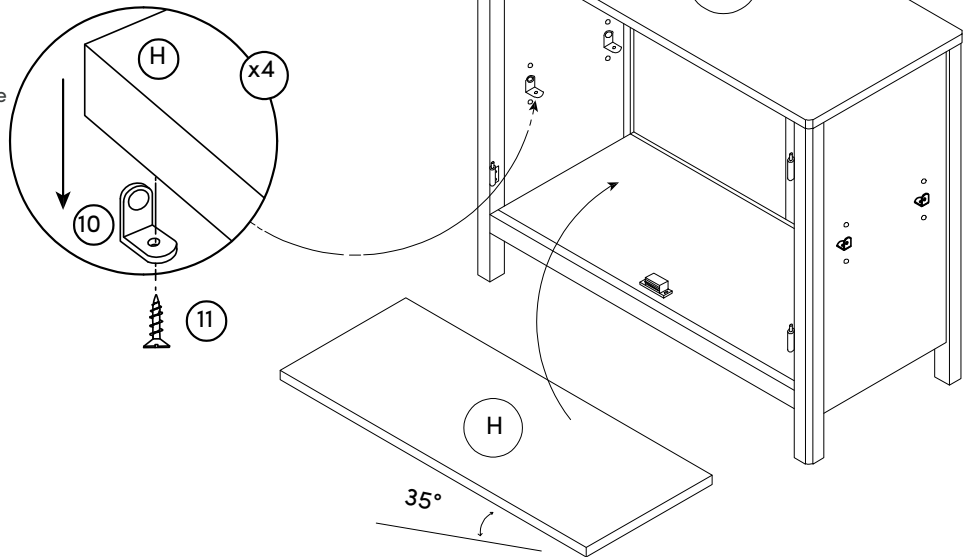


# Step 13

Next, you will put the Shelf (H) into place atop the Shelf Pins (10) from Step 12.

**Optional:** secure the Shelf (H) to the Shelf Pins (10) by screwing the provided screws (11) directly into the bottom side of the Shelf (H)

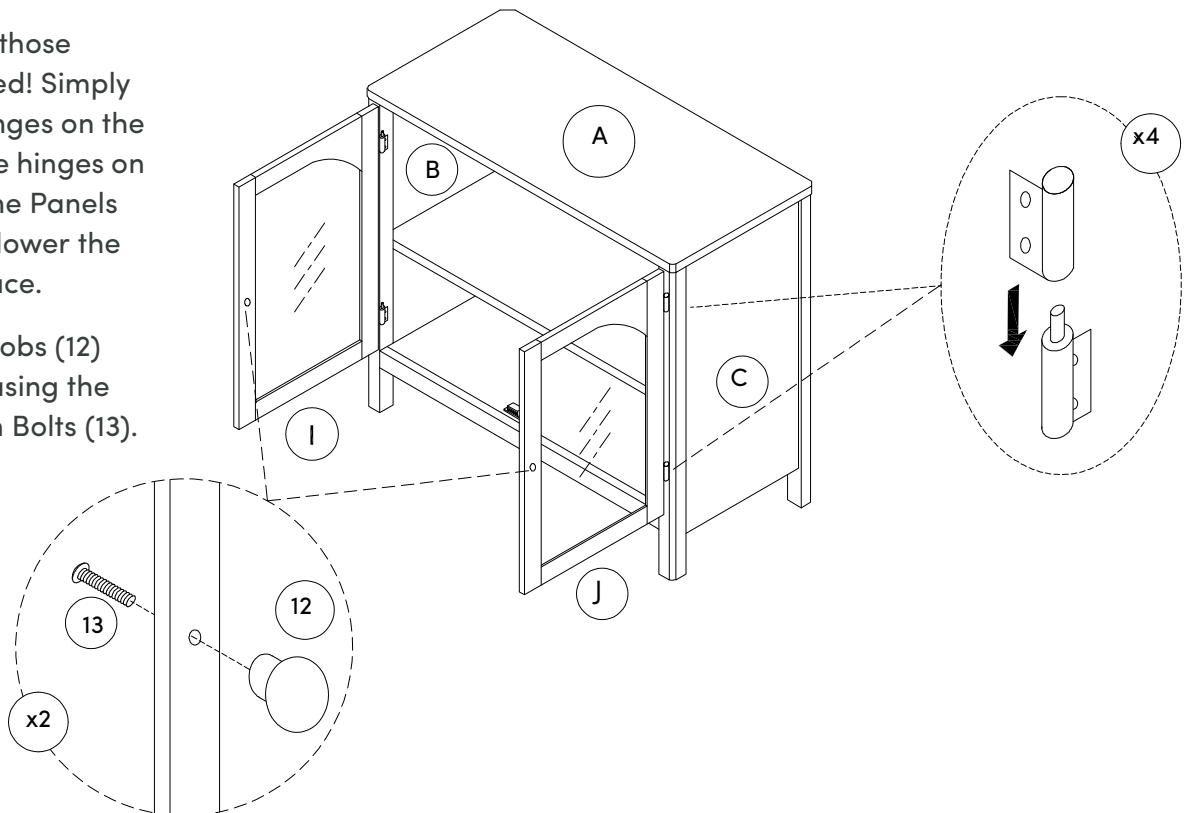
*Additional Note: no pre-drilled holes are present nor necessary.*



# Step 14

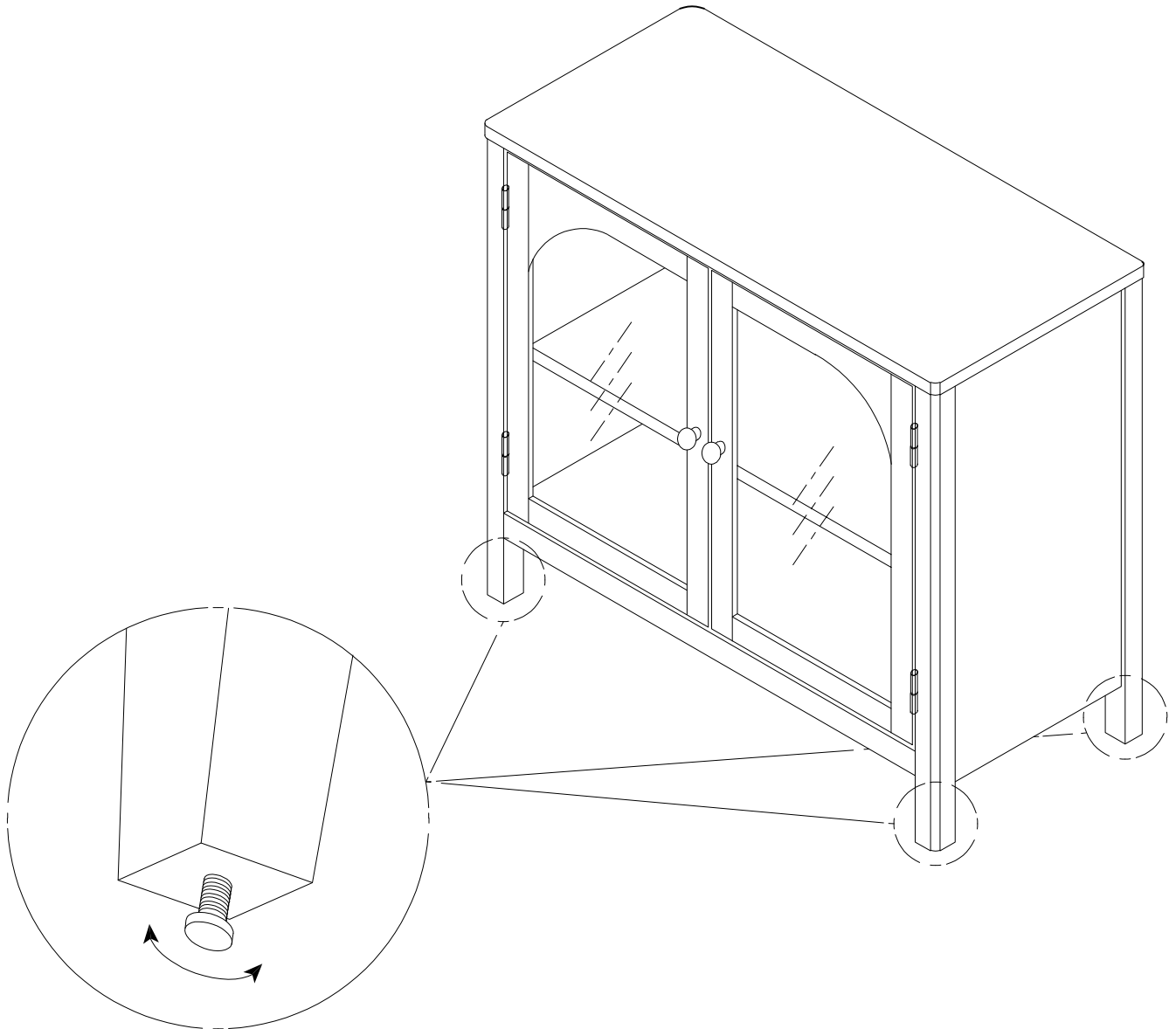
Now let's get those doors attached! Simply line up the hinges on the doors with the hinges on the Side Frame Panels (B) (C). Then lower the doors into place.

Attach the Knobs (12) to the doors using the 5/32" x 22mm Bolts (13).



# Step 15

Place your cabinet on a level surface then use the adjustable levelers on the bottom of the legs to stabilize the unit.

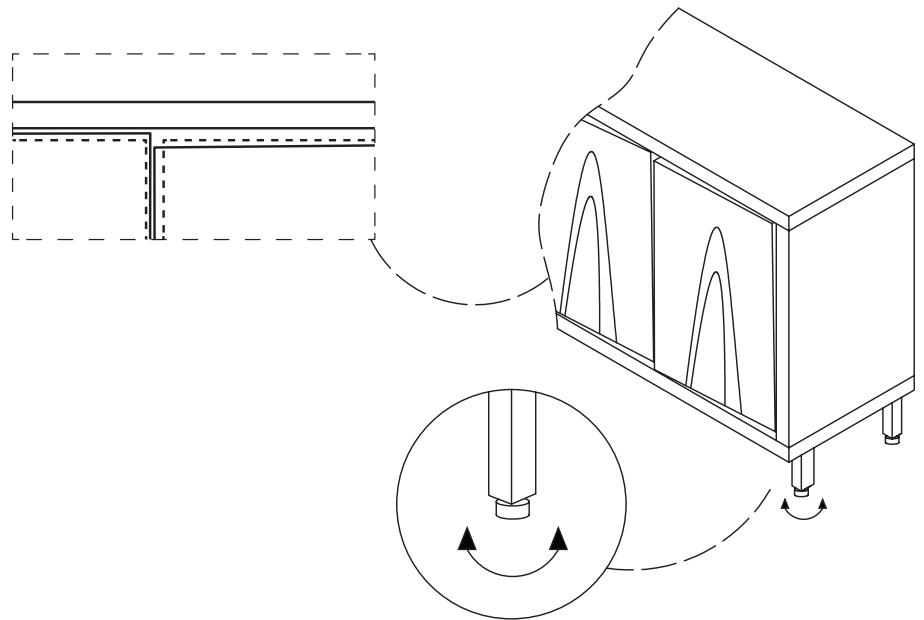




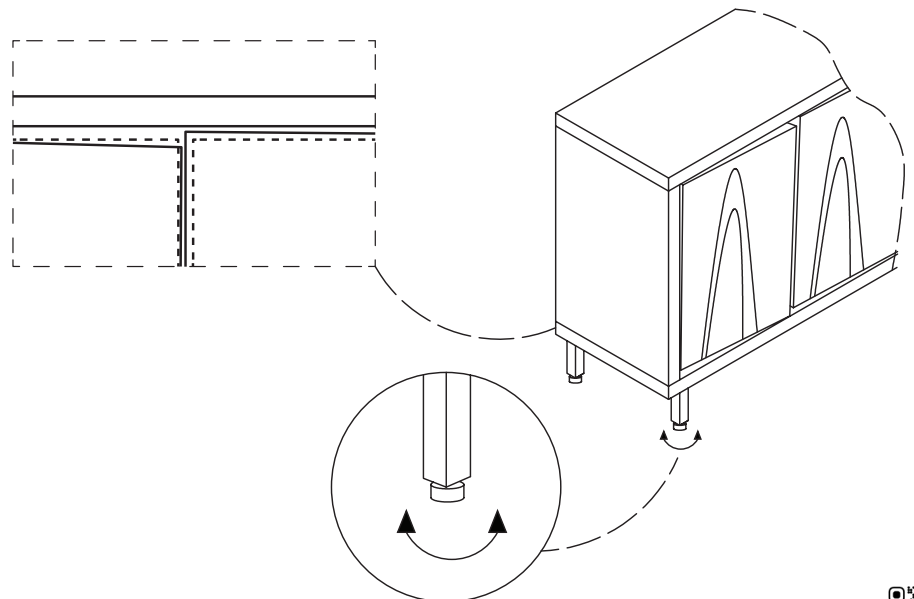
# Is your cabinet door looking crooked or unevenly spaced? (Cont.)

If you're still having trouble lining everything up, your next step should be to adjust the leveling glides to square up the cabinet and doors and make sure things are level. Follow the instructions below:

If the right door appears to be hanging low, you can adjust the adjustable leveler on the front right until the door is better aligned.



If the left door appears to be hanging low, you can adjust the adjustable leveler on the front left until the door is better aligned.



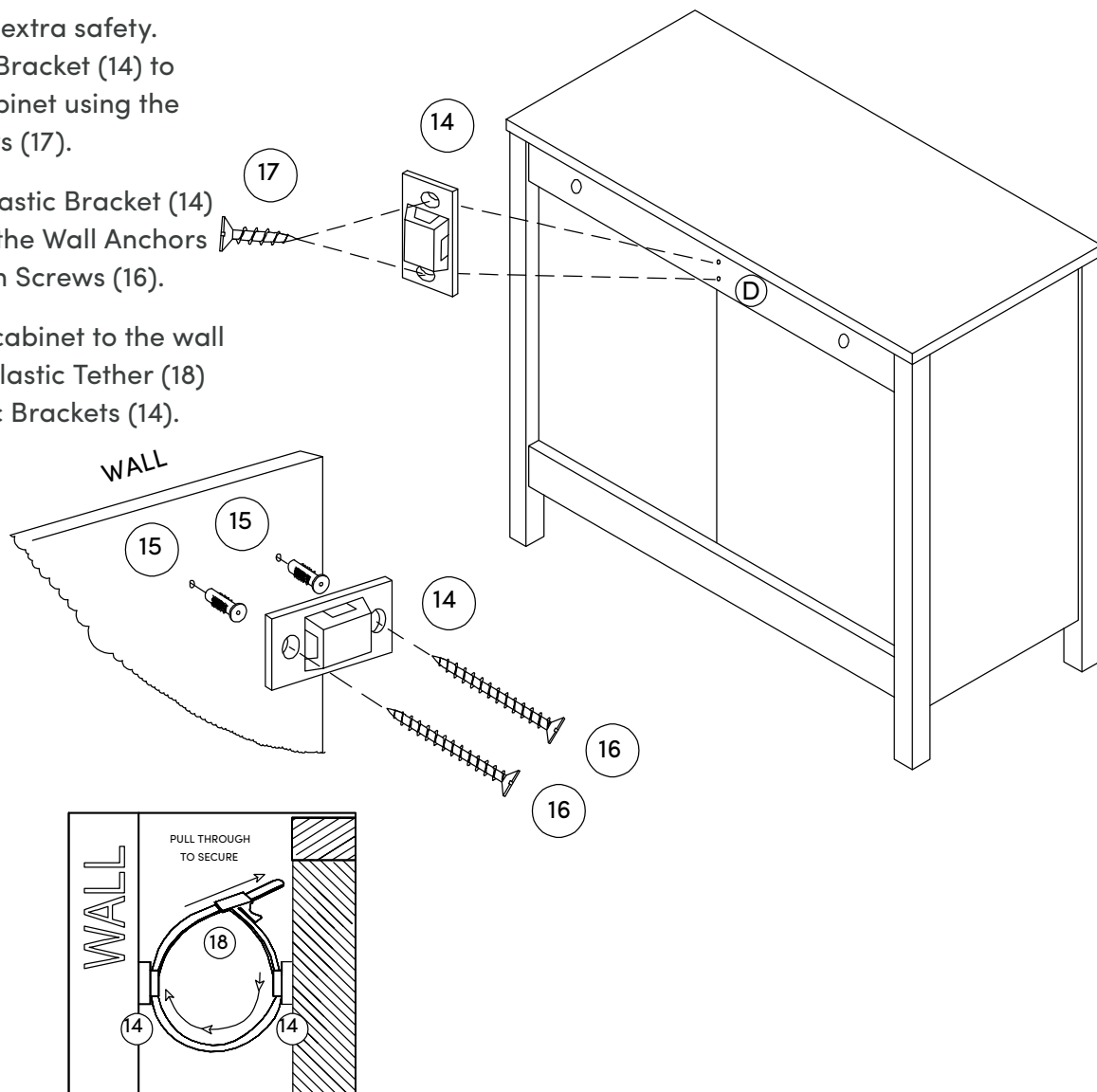
# Step 16

You made it to the last step!  
We're so proud of you.

Time to add some extra safety.  
Attach the Plastic Bracket (14) to  
the back of the cabinet using the  
M3.5\*15mm Screws (17).

Next, attach the Plastic Bracket (14)  
to your wall using the Wall Anchors  
(15) and M4\*38mm Screws (16).

Finally, tether the cabinet to the wall  
by threading the Plastic Tether (18)  
through the Plastic Brackets (14).



## IMPORTANT NOTE:

Young children (and/or pets) can be seriously injured by tipping furniture units.

You must install the provided anti-tip kit hardware solution, as instructed, to prevent the furniture units) from tipping over - which could possibly lead to injuries or damage.

The provided anti-tip kit hardware solution is intended only as an additional safety measure & deterrent; it is not a substitute for proper adult supervision.

The provided anti-tip kit hardware solution is not an earthquake restraint. If you wish to add the extra security of earthquake restraints, they must be purchased & installed separately.



# No heartburn, when we handle the return

Give us a call **1-866-619-1004** or shoot us a message  
at **help@nathanjames.com** we will issue you a free  
replacement with **zero hassle**.

## Our way



Give us a call



Replacement



You

## Their way



Re-package item



Schedule pick up



Track package



Replacement



You

We really don't want you to go through the hassle of re-packaging your item  
and sending it back, because let's be honest...nobody has time for that.



# Safety first, fun later

We want your Mason Storage Unit to last as long as possible, so we recommend that you tighten the screws 2 weeks after assembly and for added safety check the tightness of all screws every 2 months.

For proper care and treatment please check our website at [NathanJames.com/products](http://NathanJames.com/products)

## Safe use of this product starts with you.

Use this Mason Storage Unit responsibly with the primary concern for your safety. Follow assembly instructions carefully and inspect product upon receipt and each use.

Nathan James and its parent companies cannot be held legally responsible for any injuries or death resulted from failure to follow instructions or improper use of this product.

## Do not modify the structure of this product in any way.

Our products have been tested to meet specific safety measures as they were originally intended to be sold. Any modifications will present the risk of creating significant safety issues which NJ will not be responsible for.

## Proper use

- |               |                              |
|---------------|------------------------------|
| <b>DO NOT</b> | use for commercial purposes  |
| <b>DO NOT</b> | frolic on storage unit       |
| <b>DO NOT</b> | leave spilled liquid on unit |
| <b>DO NOT</b> | use storage unit if damaged  |
| <b>DO NOT</b> | make temporary repairs       |
| <b>DO NOT</b> | use outdoors                 |



# We are only in business if you're happy

For starters, thanks for being you.

☎ Toll-free at 1-866-619-1004

✉ Help@nathanjames.com

🌐 NathanJames.com/help

We do our best to ensure your furniture arrives without any problems, but occasionally mistakes happen—as humans we are imperfect beings. In the event that a part is damaged or missing, we will be more than happy to provide you with replacement part(s) for free.

## Warranty

This product comes with a lifetime warranty from the date of purchase. Please use your phone to scan the QR code to register your product or visit <https://goo.gl/i9dk3q>



### Did we do alright? Please spread the love!

If you are happy with your product, tell your friends and family about us or even better leave us a review online. Spreading the word gives us the opportunity to make more people happy and keep our prices low for your next purchase.

*Brooke Burdon*

Founder, Nathan James