

ASSEMBLY INSTRUCTION

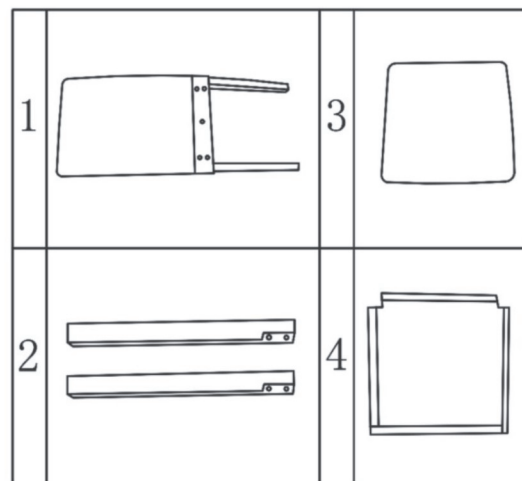
Read this instruction carefully,
see hardware and furniture part list
for guidance, be sure all parts are
complete, before you assemble, place
all wooden parts on a clean and flat
soft surface to prevent from being
scratched.

CAUTION:

- 1, Do not fully-tighten the bolt until all is ready assemble.
- 2, Do not over-tighten the bolt to avoid causing damages to the thread.

3. CLEANING OF PU COVER-WIPE CLEAN
WITH A SOFT CLOTH MOISTENED WITH
WATER AND NEUTRAL DETERGENT. DO NOT
USE BLEACH, CHEMICAL OR BIOLOGICAL
CLEANERS.

4. CLEANING OF FABRIC COVER-WIPE CLEAN
WITH A SOFT CLOTH WITHOUT WATER. DO
NOT USE WATER BLEACH, CHEMICAL OR
BIOLOGICAL CLEANERS.

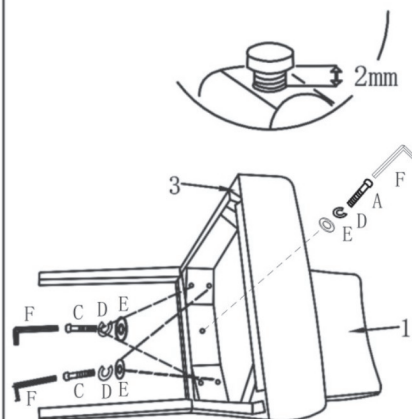


PART LIST		
ITEM	DESCRIPTION	QTY
1	CHAIR BACK	1 PC
2	FRONT LEGS (L&R)	2 PCS
3	CUSHION SEAT	1 PC
4	COVER UNDER THE SEAT	1 PC

HARDWARE LIST			
ITEM	DESCRIPTION	PIC	QTY
A	SHORT BOLT M8X60MM		1PCS
B	MID BOLT M8X70MM		4PCS
C	LONG BOLT M8X80MM		4PCS
D	LOCK WASHER		9PCS
E	FLAT WASHER		9PCS
F	ALLEN KEY		1PC

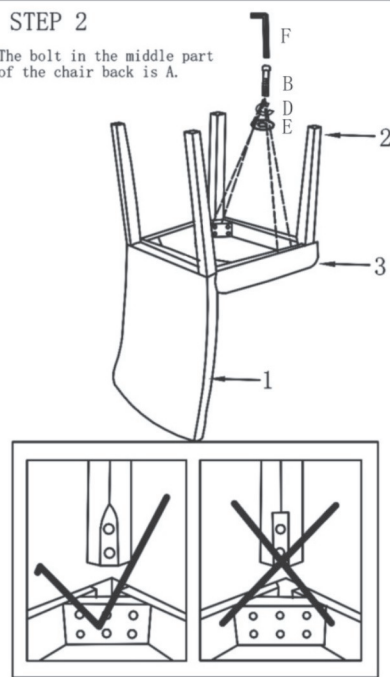
STEP 1

Do not fully-tighten the bolt
until you confirm that the legs is
on same level.



STEP 2

The bolt in the middle part
of the chair back is A.

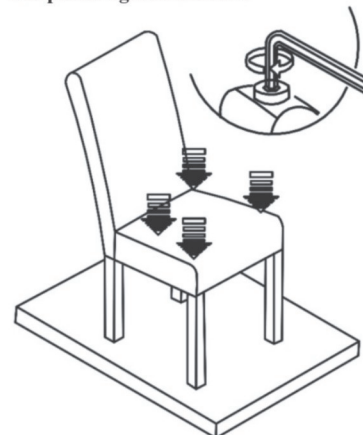


STEP 3

Please put the chair on a flat surface.
Please adjust the parts connecting the seat
and the back to make sure four legs are on
same level.

Tip: It would be easy to adjust the legs by
sitting on the chair and do that with the
help of your own weight.

The please tighten the bolts



STEP 4

Put the cover under the seat (4) to the
cushion seat (3).
There are two foot nails under the
front legs.
You can adjust the height to make
the chair in balance

