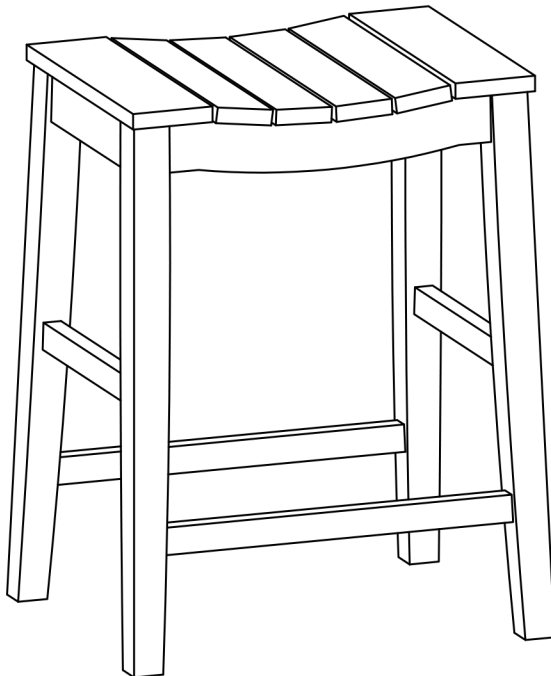


ASSEMBLY INSTRUCTIONS



TOOLS REQUIRED



Allen Wrench

(Included)



Phillips
Screwdriver

(Not Included)



**2 - People
Recommended**

ASSEMBLY RATING



EASY —————> DIFFICULT

The Assembly Rating is a 5-point system showing the level of effort needed to assemble a specific product.



CHECK BEFORE STARTING

☐

Are you missing anything?

Double-check all parts, hardware and accessories listed are all accounted for.

☐

Check out our Quick Tips!

We recommend reviewing the pre-assembly handouts. Even experts need a refresher now and then!

☐

Should we send any replacements?

Are there any irregularities or flaws in the parts? We can send replacements!

☐

Prep Time!

Please review the assembly instructions and all diagrams prior to assembling.

PRE ASSEMBLY INTRODUCTION

We understand building ready-to-assemble furniture can be a challenging experience for some. To help avoid confusion, we have provided some helpful tips that may speed up the process.



Teamwork

ALWAYS have at least two people to help with transporting and assembling the product to avoid potential injury and/or damage.



Suitable Location

Assembling near the area of the intended location is highly recommended.



Sufficient Space

Make sure you have enough space to move around during the assembly.



Avoid Scratches

Use cardboard, blankets or a carpeted area while assembling furniture to prevent to prevent scratches and damages.



Flat Surface

Make sure the furniture rests on a flat and level surface with each leg evenly touching the floor.

ASSEMBLY AND CARE ADVICE



**FAILURE TO FOLLOW THE GUIDELINES BELOW MAY
RESULT IN INJURY AND/OR PROPERTY DAMAGE.**



Position each part correctly
and insert screws or bolts into
their respective holes.



Turn clockwise to tighten and
only tighten when step is
completed or when instructed
to do so.



Use the appropriate hand tools
or power tools for assembly.
Select steps, such as tightening
screws and/or bolts, may require
hand tools to avoid causing
damage during assembly.



Save the instructions and store
any supplied tools for later
maintenance.

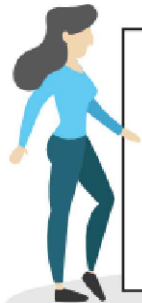
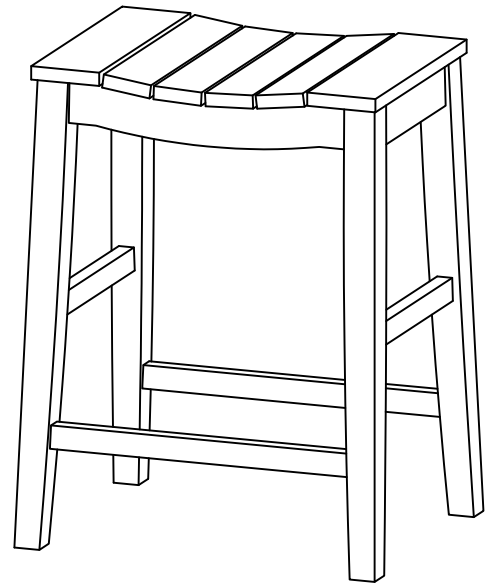


After two weeks, check and
tighten any loose hardware and
repeat again every six months
thereafter.

IT IS THE USER'S RESPONSIBILITY TO MAINTAIN THE FURNITURE. THE HARDWARE MAY LOOSEN OVER TIME AND MAY CAUSE THE FURNITURE TO BE WOBBLY AND UNABLE TO SUPPORT ITS INTENDED WEIGHT CAPACITY. THIS MAY LEAD TO COLLAPSE AND MAY CAUSE SERIOUS INJURY.

COUNTER HEIGHT STOOL

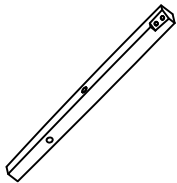
CM3583-ST-2PK



- Please keep instructions for future reference.
- Check the quantity and irregularity of parts and hardware before you start.

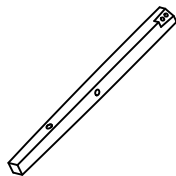
PARTS

#1 2pcs X2



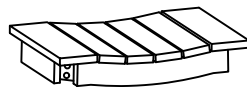
Leg ①

#2 2pcs X2



Leg ②

#3 1pc X2



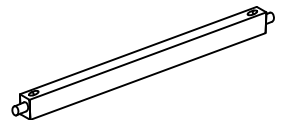
Wooden Seat

#4 2pcs X2



Short
Side Stretcher

#5 2pcs X2



Long Front /
Rear Stretcher

HARDWARE

#A 8pcs X2



M6 x 60MM
Bolt

#B 8pcs X2



M6 x 13MM
Spring Washer

#C 8pcs X2



M6 x 19MM
Flat Washer

#D 8pcs X2



M4 x 45MM
Pan Head Screw

#E 1pc



M4 Ball End
Allen Wrench

ASSEMBLY INSTRUCTIONS

1

Align Leg (#2) to the Wooden Seat (#3), secure by using bolts (#A) with washers (#B,C). Affix Side Stretchers (#4,5) into Leg (#2).

Part #2 x1pc

Part #3 x1pc

Part #4 x1pc

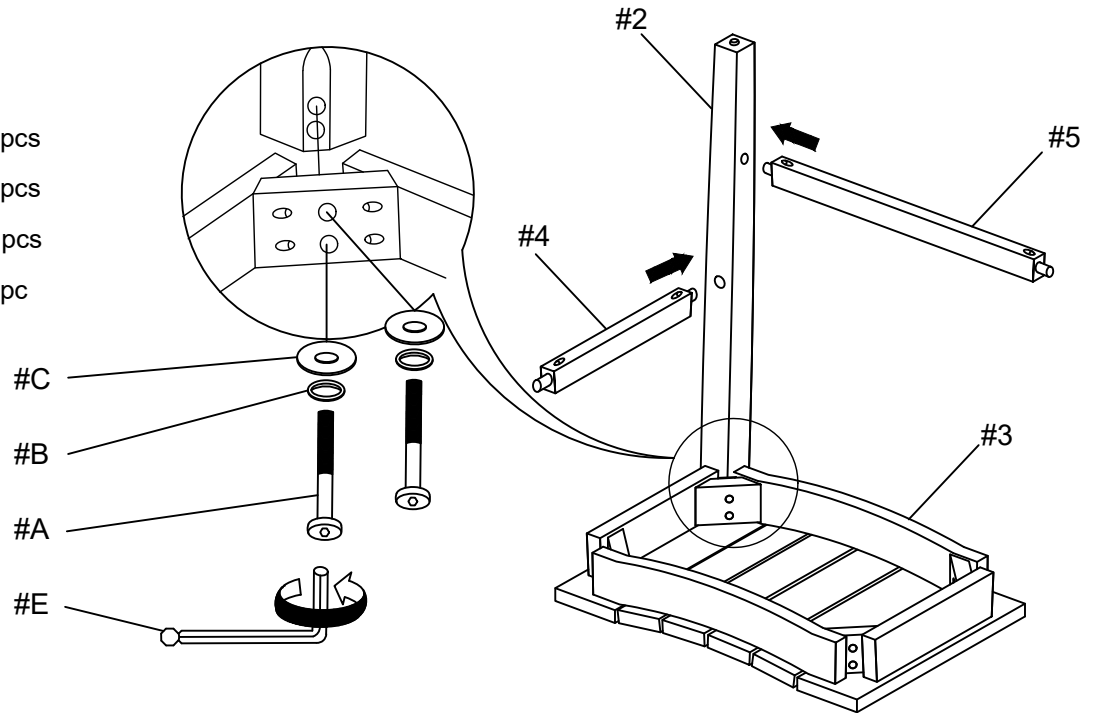
Part #5 x1pc

Hardware #A x2pcs

Hardware #B x2pcs

Hardware #C x2pcs

Hardware #E x1pc



2

Align Leg (#1) to the Side Stretcher (#4,5), secure by using bolts (#A) with washers (#B,C). Affix Side Stretchers (#4,5) into Leg (#1).

Part #1 x2pcs

Part #4 x1pc

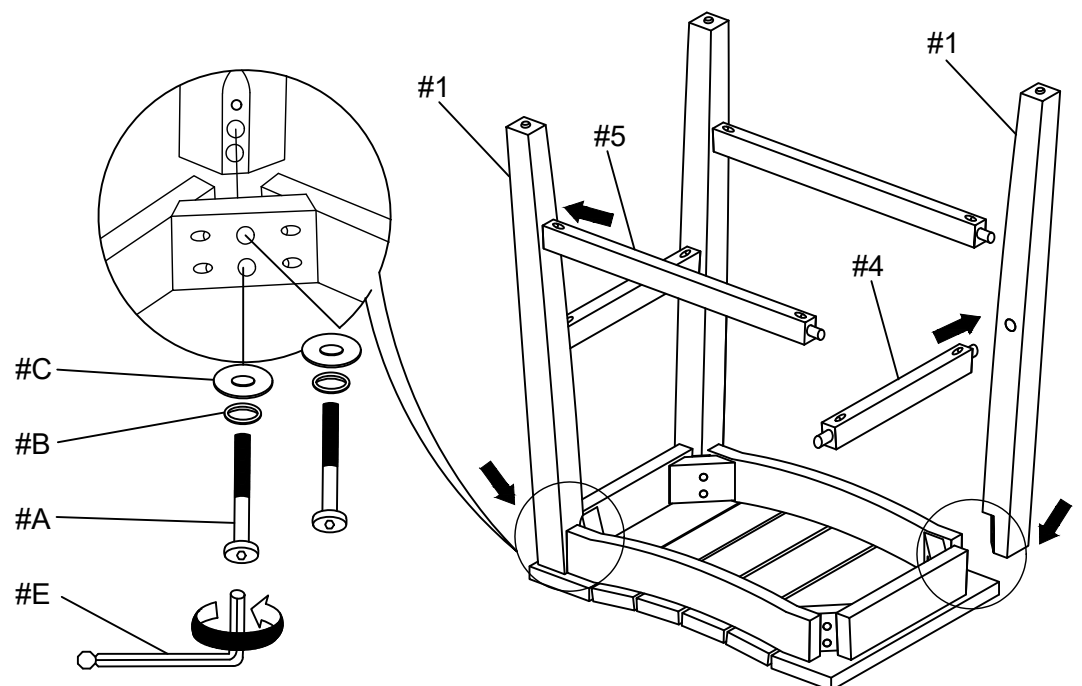
Part #5 x1pc

Hardware #A x4pcs

Hardware #B x4pcs

Hardware #C x4pcs

Hardware #E x1pc

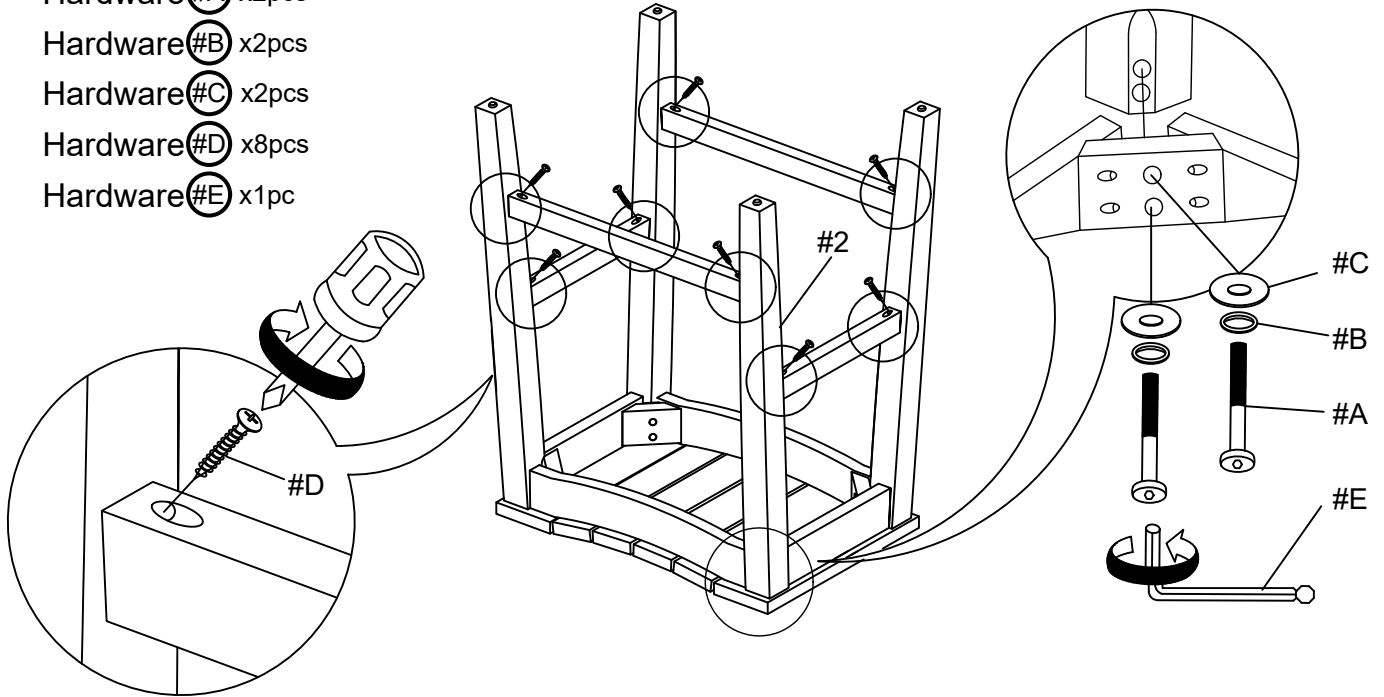


ASSEMBLY INSTRUCTIONS

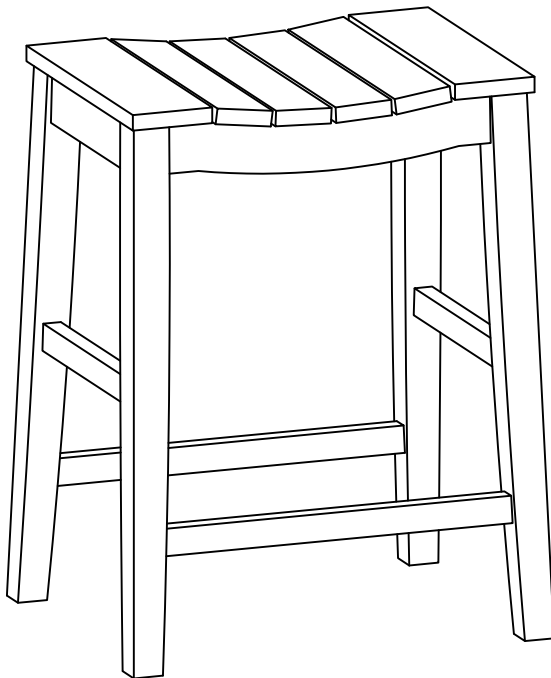
3

Part #2 x1pc
Hardware #A x2pcs
Hardware #B x2pcs
Hardware #C x2pcs
Hardware #D x8pcs
Hardware #E x1pc

Align Leg (#2) to the Side Stretcher (#4,5), secure by using bolts (#A) with washers (#B,C). Secure all Side Stretchers by using Pan Head Screw (#D).



4



ASSEMBLY COMPLETED



Please ensure the furniture rests on an even and flat surface. If the product wobbles or feels loose, double-check all bolts and/or screws are properly tightened and secured.



Keep this handy!

Please retain this instruction manual and any order-related information for future reference.



Lift, don't drag!

To avoid damage to product please always LIFT the product when transporting or adjusting the placement.