

HGTV'S BARGAIN MANSIONS STAR



# TAMARA DAY



AN EYE FOR DESIGN. A HEART FOR HOME.



# Charlotte

## COLLECTION

**HAND-TUFTED FROM 100% BLENDED WOOL**

---

The Charlotte Collection combines inspiration from three homes on Charlotte Street. Each home is entirely different and unique but has a few things in common. Like each rug in this collection, these homes are comfy, cozy, and stunning. The Charlotte Collection is unique in its colors and patterns, ranging from bold and bright to warm and subtle. Hand-tufted in India from 100% wool, these rugs are sure to warm your home and make a statement.

---

**INDOOR USE ONLY**  
**HAND-TUFTED IN INDIA FROM 100% WOOL**  
**FEATURES KALEEN'S COTTON BACKING**

---

**0'18" x 0'18"**  
**2'6" x 9'0"**

**4'0" x 6'0"**  
**5'0" x 7'3"**  
**8'0" x 10'0"**

**8'6" x 11'6"**  
**9'3" X 13'0"**









**CHARLOTTE / Indoor**



**TDC01-17** | Blue



**TDC01-104** | Seafoam



**TDC02-01** | Ivory



**TDC02-72** | Maize



**TDC02-113** | Peach



**TDC03-03** | Beige





TDC03-92 | Pink



TDC04-02 | Black



TDC06-02 | Black



TDC06-17 | Blue



TDC06-89 | Orange



TDC07-84 | Oatmeal



# Juniper

## COLLECTION

**MACHINE-MADE FROM 100% POLYPROPYLENE**

---

Tamara's first home to air on Bargain Mansions was Juniper. She and her father worked on this home together. At the end of the build, her father purchased the home. This home's French chateau design and masculine feel inspired the Juniper Collection. These rugs are designed with stunning simplicity in mind. The clean lines and simple colorways allow this collection to speak to the imagination. Whether dressing up in a family room or a masculine office, these rugs will be sure to make a statement. The Juniper collection is machine-made in Turkey.

---

INDOOR USE ONLY, MACHINE-SERGED  
MACHINE-MADE FROM 100% POLYPROPYLENE IN TURKEY  
OPEN-BACKED, LIGHTWEIGHT, AND EASY TO MOVE

---

2'0" x 3'0"  
2'2" x 7'7"

3'11" x 5'3"  
5'7" x 7'7"

7'10" x 10'10"  
9'2" x 12'4"









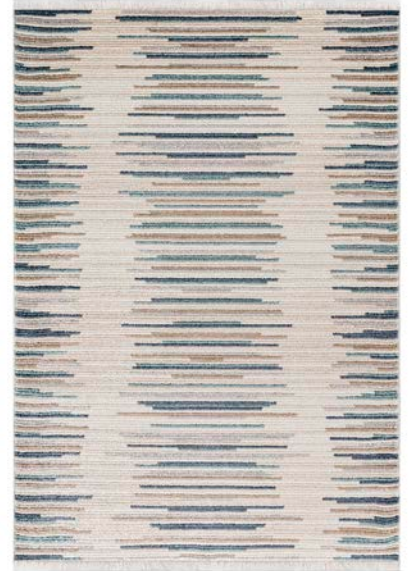
**JUNIPER /** Indoor



**TDJ01-01** | Ivory



**TDJ01-02** | Black



**TDJ01-10** | Denim



**TDJ02-01** | Ivory



**TDJ02-02** | Black



**TDJ03-02** | Black





TDJ04-01 | Ivory



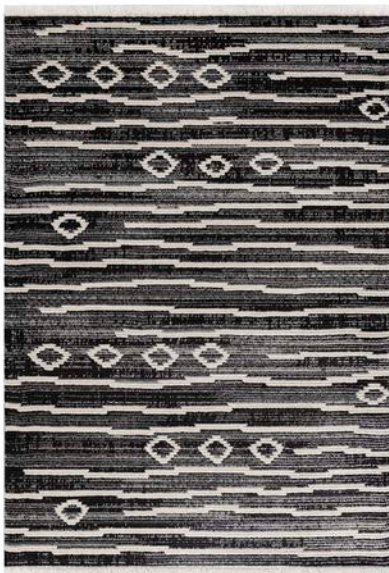
TDJ04-02 | Black



TDJ04-86 | Multi



TDJ05-01 | Ivory



TDJ05-02 | Black



TDJ06-01 | Ivory



# Lee Boulevard

## COLLECTION

**MACHINE-MADE FROM 100% POLYPROPYLENE**

---

The Lee Boulevard home inspires the Lee Boulevard Collection in the center of Kansas City. Nestled on 4 acres, this home offered a feeling set apart from the city. This collection was born with a little bit of country in the sprawling cityscape. The Lee Boulevard Collection is traditional with a touch of contemporary. Each rug represents a conventional design and showcases a color palette from warm and muted to bold and bright. These rugs will add life to your outdoor living space. These rugs are machine-made in Egypt from 100% polypropylene. They are open-backed and lightweight, making them easy to move.

---

**INDOOR/OUTDOOR USE, UV-STABILIZED, FADE & HEAT RESISTANT**  
**MACHINE-MADE FROM 100% POLYPROPYLENE IN EGYPT**  
**OPEN-BACKED, LIGHTWEIGHT, AND EASY TO MOVE**

---

1'9" x 3'0"  
2'5" x 3'9"

2'2" x 8'0"  
3'6" x 5'6"

5'0" x 7'6"  
7'2" x 10'5"









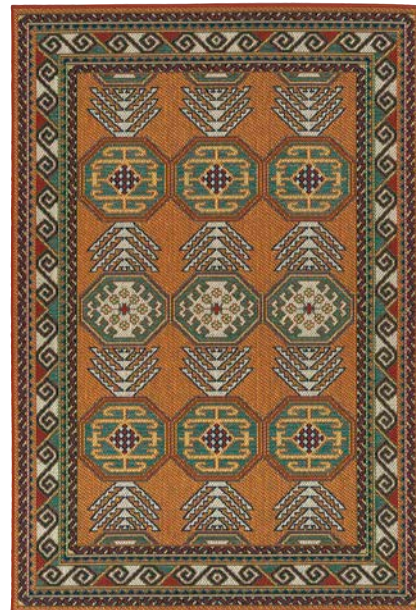
LEE BOULEVARD / Indoor/Outdoor



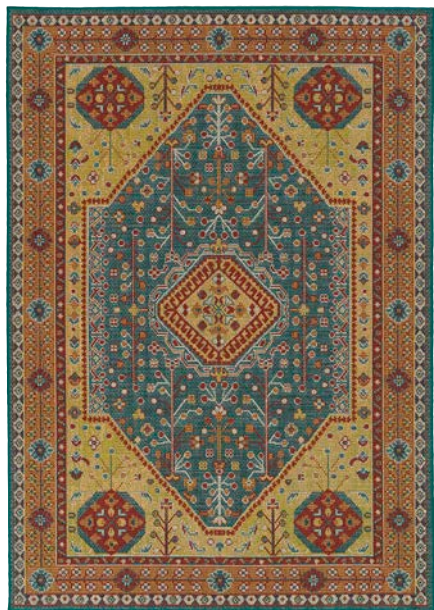
TDL01-17 | Blue



TDL01-25 | Red



TDL02-89 | Orange



TDL03-86 | Multi



TDL04-17 | Blue



TDL04-28 | Yellow





TDL05-17 | Blue



TDL06-25 | Red



TDL06-29 | Sand



TDL07-50 | Green



# Warwick

## COLLECTION

**HAND-TUFTED FROM 100% POLYESTER**

---

When designing a space, it is all about color and texture. So, when Tamara began developing these rugs, she knew she needed a collection with dramatic texture. These rugs have a mix of bold colors and calming neutrals that reminded her of a house she designed on Warwick — classic, beautiful, and dramatic. The Warwick Collection has a low pile base with over-tuft or high pile details making them exciting and versatile for any space. These rugs are made from 100% polyester and are lightweight and durable. Hand-tufted in India and paired with Kaleen's non-skid backing, these rugs are perfect for any space in your home.

---

**INDOOR USE ONLY**  
**HAND-TUFTED & FINISHED FROM 100% POLYESTER IN INDIA**  
**FEATURES KALEEN'S NON-SKID BACKING FOR EXTRA SAFETY**

---

**0'18" x 0'18"**  
**2'6" x 8'0"**

**4'0" x 6'0"**  
**5'0" x 7'3"**

**8'0" x 10'0"**  
**8'6" x 11'6"**











TDW01-106 | Terracotta



TDW02-10 | Denim



TDW03-91 | Teal



TDW03-92 | Pink



TDW04-86 | Multi



TDW03-91 | Teal





TDW06-22 | Navy



TDW07-01 | Ivory



TDW08-02 | Black



TDW09-61 | Robin's Egg



TDW10-01 | Ivory