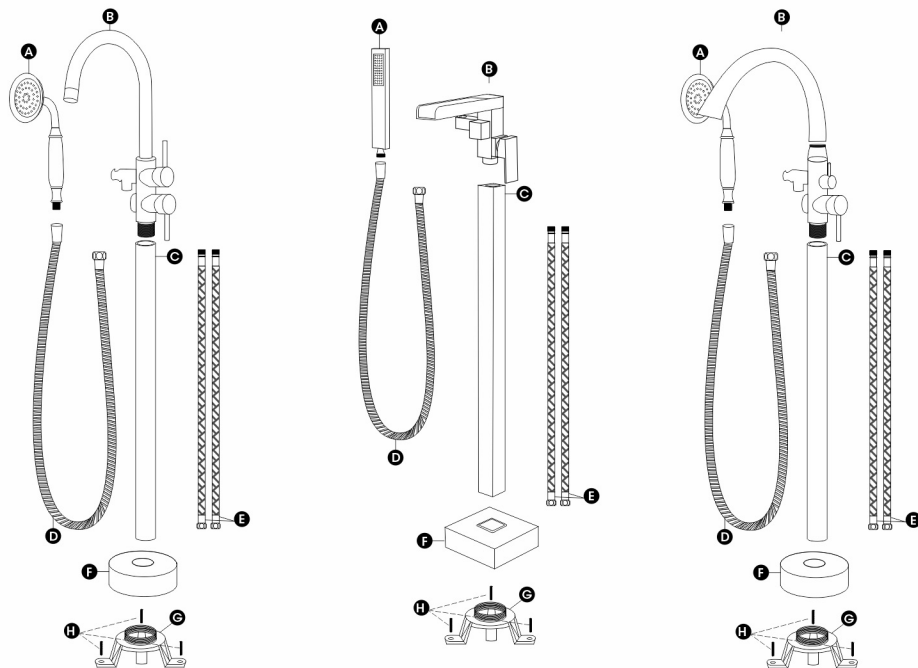


FREESTANDING FAUCET

Installation instruction



CH/BN/MB/BG/ORB



1. INSTALLATION PRECAUTIONS

- When you open the product packaging, please check the product and accessories at first.
If there are any discrepancies, please contact us promptly. We will provide you with a satisfactory solution.
- The hot and cold water supply pipe of the valve must be properly connected. When facing the front of the valve, the hot water supply is on the left and cold water supply is on the right.
Incorrect connection will cause permanent damage to the cartridge.
- If the accessories to be changed without affecting the use, we will not make a prior notice.
- The impurities in the water supply pipe must be cleared before installation to avoid blockage.
- The water pressure of the faucet is 0.05MPa-1.0MPa(including cold water and hot water Pressure). Applicable water temperature range:39°F-194°F.

2. PREPARATION BEFORE INSTALLATION

CONNECTION ADVICE

Firmly hand tighten the hose to the valve and add a quarter turn using the proper wrench. Tighten more if needed.

* Apply plumber's putty under the plastic cover deck plate to seal your installation.
*The model shown in the installation steps may differ from the one in box however connection type and installation steps are the same.

Plumber's putty

Thread seal tape

Included

3. FAUCET ACCESSORIES LIST

No.	Description
A	Hand shower
B	Tub Faucet
C	Standing Tube
D	Shower Hose
E	Hot and cold Hose
F	Escutcheon
G	Fix Base
H	Expansion screw

DO NOT:

Use abrasive cleansers, cloths, or paper towels. Use any cleaning agents containing acid, polish, wax, alcohol, ammonia, bleach, solvent or any other corrosive or harsh chemical cleansers.

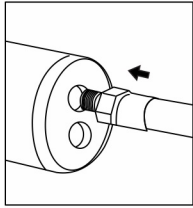
Contact us if you need 1/2" to 3/4" hose adapter or 1/2" to 3/8" hose adapter. Special hoses length can be customized as required.

Tel: 8402004589/9514339027

E-mail: customerservice.proox@gmail.com

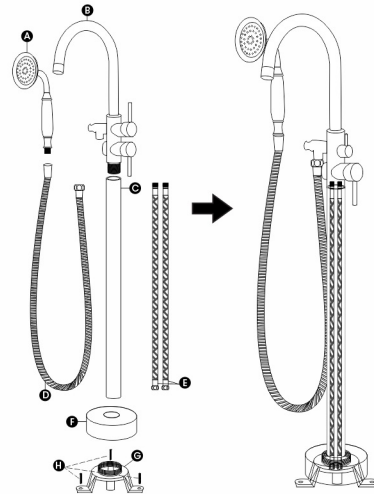
9.00 am - 5:00 pm P.D.T Monday - Friday

4. FREESTANDING FAUCET INSTALLATION

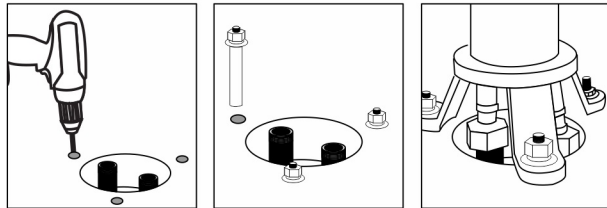


Make sure to connect the hot and cold hose(E) in the adequate connection.

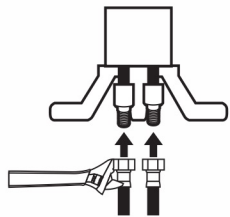
NOTE: BE CAREFUL EACH WATER SUPPLY HAS 2 O-RING, SPARE PARTS IN BAGS FOR STAND BY.



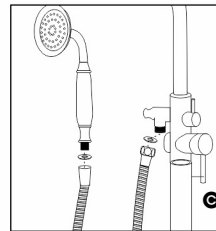
2. Tighten Tub Faucet(B) to Standing Tube(C). Put the Slider Escutcheon(F) on Standing Tube(C) Then TIGHTEN Standing Tube(C) to Fix Base(G). **IMPORTANT:** Position the faucet to where you want it. (This will avoid the instability of the Tub Faucet(B) caused by subsequent adjustments to the direction of the faucet) Then mark the Fix Base position.



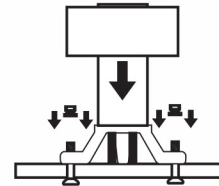
3. Pre-drill the hole. Install the expansion screw(H). Screw tighten the Fix Base(G).



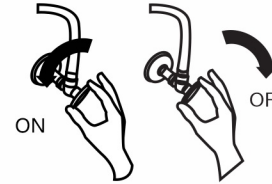
4. Connect the hot and cold hose(E) to water supply. (Special hoses size and length can be customized as required.)



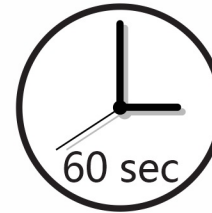
5. Put the washer on Hand Shower hose(D). Connect hex nut to Tube Faucet(B). Connect conical nut to Hand Shower(A).



6. Slide Escutcheon(F) down to cover Fix Base(G).



7. Turn on the main water supply to ensure that there are no leaks. Once you have determined that there are no leaks, turn the water supply back off and continue with the installation.



8. Once installation is complete, turn on the main water supply. Turn the faucet on and allow the water to flow for 60 seconds. Check for any leaks, and that hot and cold water are running appropriately. Divert the water to the hand shower and allow the water to flow through the hose for approximately 60 seconds.

5. PRODUCT REPAIRATION

If the cartridge is worn out which cause leakage, please turn off the water source. Remove the handle, panel, and decorative cover in sequence, remove the gland with a wrench, then take out the cartridge and copper sleeve. Repair or replace the new cartridge, then install it again in sequence.

6. CLEARANCE AND MAINTENANCE

In order to keep the faucet appearance smooth and good performance, please follow the below steps to clean and maintain the faucet.

1. Clean with water and dry with a soft cotton cloth.
2. Use a mild liquid and a colorless glass cleaner to remove surface dirt and scale, also you can use the cleaner without grinding function.
3. Do not use detergents, polishing tools, abrasive cloth, paper towels or scrapers to clean the faucet.
4. Do not use acid cleaners, insoluble granular detergents, soaps etc to clean the Faucet.