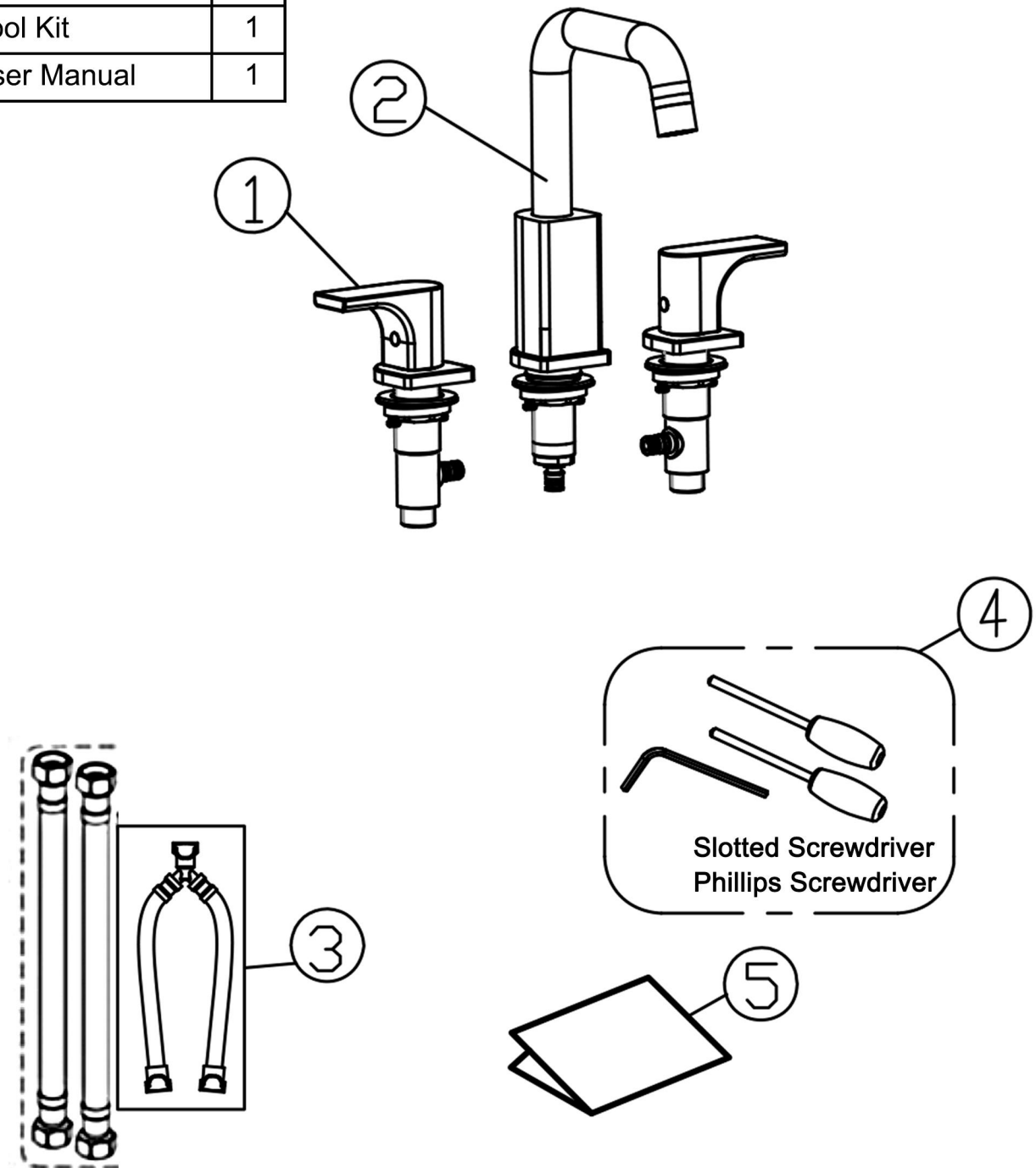


NO.	Name	Qty
1	Handle	2
2	Spout	1
3	Hose	4
4	Tool Kit	1
5	User Manual	1



Check accessories

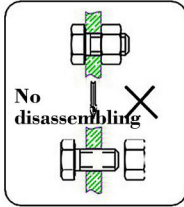
Standard List of Accessories:

When you open the product packaing, please check whether the objects in it are consistent with the main body and accessories you purchased. If there is any inconsistency, please contact our company or our distributor.

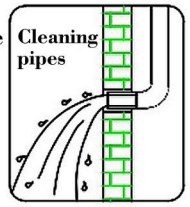
Note: 1.Accessories are subject to change without prior notice if the change does not affect usage;

2.The appearance of the product is subject to the physical objects you receive, and the schematic diagram is only for reference.

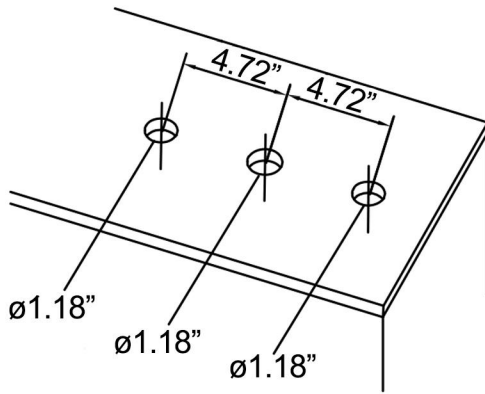
This product has been inspected and debugged by the factory to the best condition. Please do not disassemble and assemble it yourself.



Before installing the faucet, please be sure to remove sundries and sludge from the water pipe to prevent sundries from blocking the faucet.

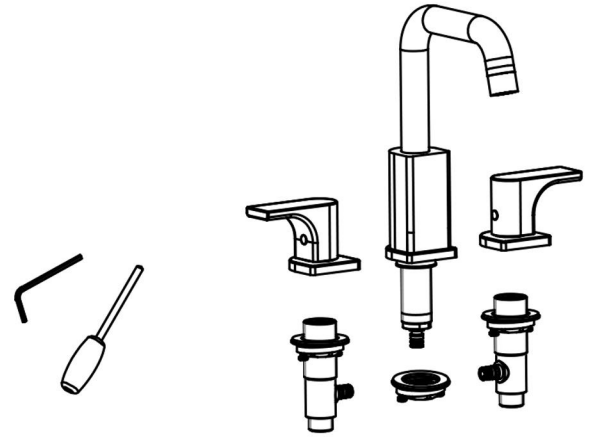


1



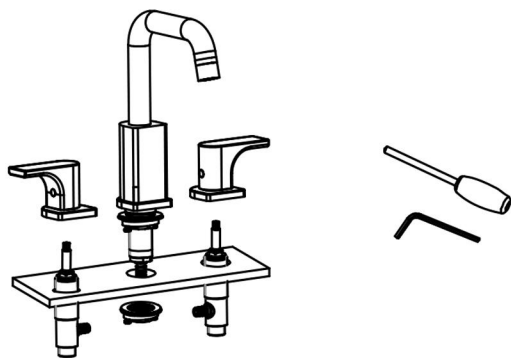
1. Make three holes on the side of the bathtub according to the size given in the picture above.

2



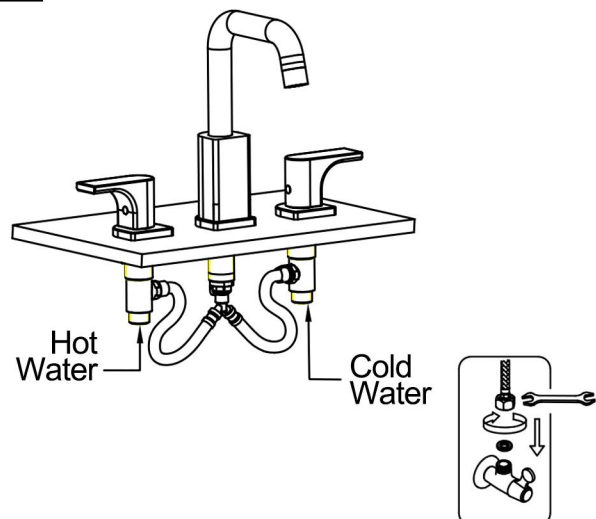
2. Use the tool to disassemble the handles and spout firstly.

3



3. Put the spout and handles through the holes on the bathtub, adjust them to the proper direction and tighten them with the screws. The direction of the handles shown in the picture is Turn On.

4



4. Connect the hose to the spout and handles firstly, and then connect the inlet pipes, Red hot Blue cold, connect the other end of the inlet pipes to the angle valve.

