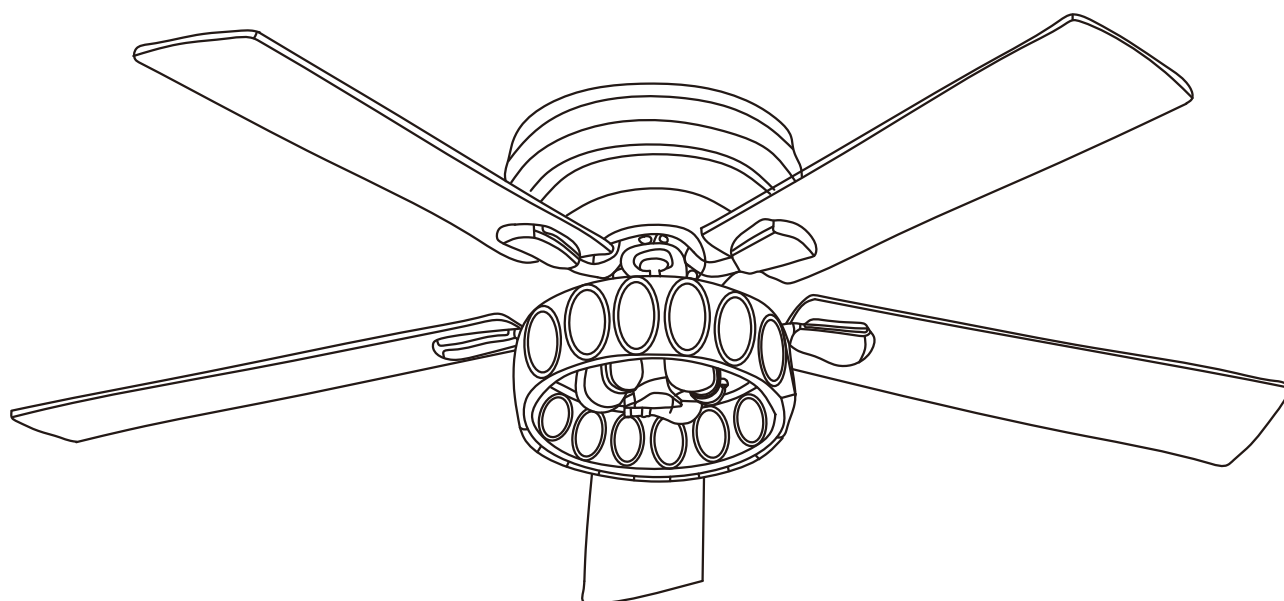


INSTALLATION & USER MANUAL

CEILING FAN WITH LIGHT



WARNING: In order to avoid the risk of dropping, this product is only installed on concrete ceilings or strong wood, Not allowed to install in outlet box!

Item#24001

Customer Service: support@ceilingfanhelp.com

TABLE OF CONTENTS

SAFETY PRECAUTIONS.....	1	BLADES INSTALLATION.....	8
PRE-INSTALLATION.....	3	LIGHT FIXTURE INSTALLATION.....	9
MATERIALS NEEDED.....	3	REMOTE USING.....	10
MATERIALS NEEDED.....	4	PARTS INVENTORY.....	11
PREPARING FOR INSTALLATION.....	5	TROUBLESHOOTING.....	12
MOUNTINGINSTALLATION.....	6		
MOUNTING.....	7		

SAFETY PRECAUTIONS

Before beginning the installation of your new ceilingfan, read and follow these safety precautions. If you are not familiar with national and local electrical codes and basic electrical wiring procedures, we recommend that you have a qualified electrician install your new ceiling fan.



ATTENTION PLEASE

- ❖ Before you begin, **TURN OFF THE ELECTRICITY**. Determine which circuit your new fan will be using and remove the fuse or turn off the circuit breaker at the main electrical panel.
- ❖ Make sure that all wiring conforms to national and local electrical codes. If you are in question, obtain a copy of the codes and wire the fan accordingly. Never leave bare wires uncovered (wire connection), use wire nuts to cap all connections. Plastic electrical tape is not recommended.
- ❖ When working with electricity, never take short cuts. Follow the code in every respect. Basic requirements for a ceiling fan installed with lights are, 120 volts AC - 60Hz, on a grounded circuit with a 15 amp breaker or fuse. Make sure that your electrical system and choice of location meet these requirements.
- ❖ If the location where you plan to install your fan does not already have an electrical outlet, hire a licensed electrician to run the wiring and install an outlet box designed for ceiling fans or heavy fixtures. The outlet box should be able to support a minimum moving weight of 50 pounds and marked "Acceptable for Fan Support" (Plastic outlet boxes are not recommended for ceiling fan installation).

- ❖ If you plan to use an existing electrical location, check to make sure that the outlet box is not PLASTIC, that it is securely attached and able to support at least 50 pounds of moving weight and marked “Acceptable for Fan Support”. If you have any questions, outlet boxes and support systems for ceiling fans are available at most hardware and do-it-yourself centers. In most cases, your dealer will have all the necessary products for the proper and safe installation of your ceiling fan.
- ❖ The location you choose should have a minimum clearance of 20 inches from any wall to the blade tip at any point in its rotation and a minimum of 7 feet from blade level to floor and 10 inches from the blades.
- ❖ This ceiling fan was not designed for installation in any location where it might be exposed to moisture or high humidity. Installation in this type of location could be UNSAFE, will most likely damage the fan and its finish... and will VOID YOUR WARRANTY.
- ❖ Every effort has been made to provide you with proper instructions for the safe installation of this ceiling fan. You could however, encounter situations or problems not covered in this manual. Should this occur, please refer to a do-it-yourself wiring handbook or hire a qualified electrician to install your fan.
- ❖ Never attach the blades to your ceiling fan before the fan body is properly mounted on the ceiling.
- ❖ Lubrication of your new ceiling fan is not necessary. The ball bearings have been adequately charged with grease and permanently sealed at the factory so that, under normal conditions, further attention is not necessary.



To reduce the risk of fire, electrical shock, or personal injury, mount this fan to an outlet box marked “Acceptable for Fan Support” and use the Mounting Screws provided with the outlet box. CAUTION: Install the primary mounting means and use only the hardware provided with the fan.



To reduce the risk of personal injury take care not to bend the blade carriers. Be careful not to insert foreign objects into rotating fan blades.



The important safeguards and instructions appearing in this manual are not meant to cover all possible conditions and situations that may occur. It must be understood that common sense, caution and careful attention to detail are factors which cannot be built into this product. These factors must be supplied by the person or persons installing, caring for, and operating the unit.



Look at Me!
I have safety Tips and
Ideas for installation

These instructions are designed for a number of similar but different ceiling fans. As you proceed, some steps may or may not apply to the fan you purchased. Compare each step or optional procedure to your fan and proceed accordingly.

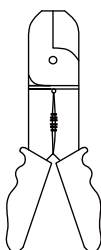
PRE-INSTALLATION

This manual is designed to make it as easy as possible for you to assemble, install, operate and maintain your ceiling fan

Tools Needed for Assembly (Not Included)



Phillips
screwdriver



Wire strippers/
cutters



One
stepladder



One 1/4" blade
screwdriver

MATERIALS NEEDED

Wiring outlet and connectors of the type required by the local code. The minimum wire would be a 3-con (2-wire with ground) of the following size:

Installed wire length	Wire Size A. W. G
Up to 50 ft.	12
50-100 ft.	12



NOTE: Place the parts from the loose parts bags in a small container to keep them from being lost. If any parts are missing contact your local retailer.



WARNING:

Before assembling your ceiling fan, refer to section on proper method of wiring your fan (page 9). If you feel you do not have enough wiring knowledge or experience, have your fan installed by a licensed electrician.

MATERIALS NEEDED

PACKAGE CONTENTS

For your convenience, check-off boxes are provided next to each step. As each step is completed, place a check mark in the box. This will insure that all steps have been completed and will be helpful in finding your place should you be interrupted.



WARNING:

Do not install or use fan if any part is damaged or missing.

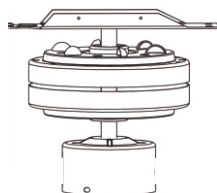
1. Check to see that you have received the following parts:



NOTE: If you are uncertain of part description, refer to exploded view illustration provided on the last page of this install manual.



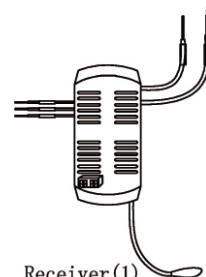
Mounting bracket



Motor assembly



Motor housing



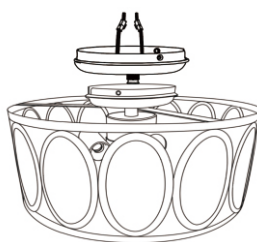
Receiver(1)
Wire Connectors



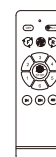
blade x5



Blade bracket x5



Light kit x1
Bulb(not included)



Remote contrl
Battery(not included)

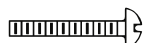
Hardware Bag



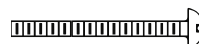
Lock Washer (4)



Flat Washer(4)



Machine Screw(2)



Machine Screw(2)



Wood Screw(4)



Blade Screws (17)

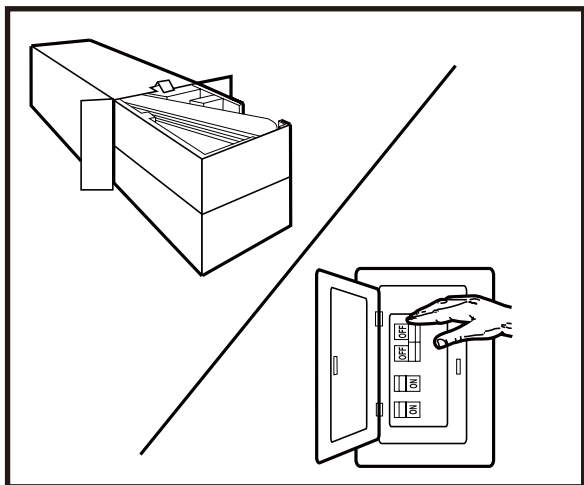


Paper Gasket (17)

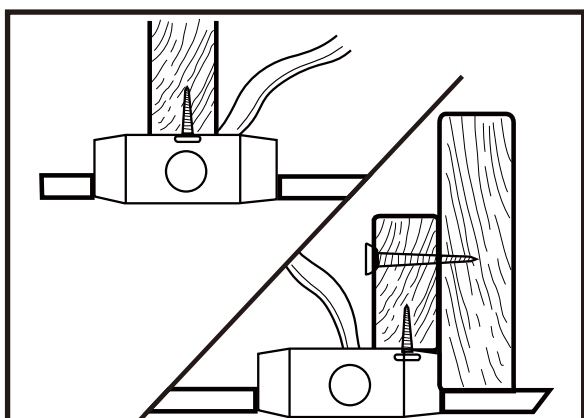


Wire Connectors(3)

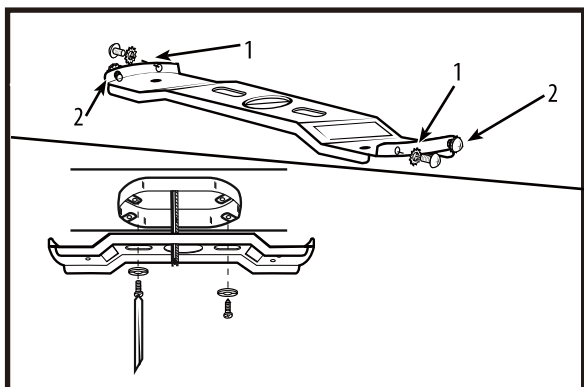
PREPARING FOR INSTALLATION



1. Unpack the carton and inspect the fan carefully to be sure all contents are included. Please kindly keep well with the screws washers and all the other small items in case of missing. Turn off power at fuse box to avoid possible electrical shock.



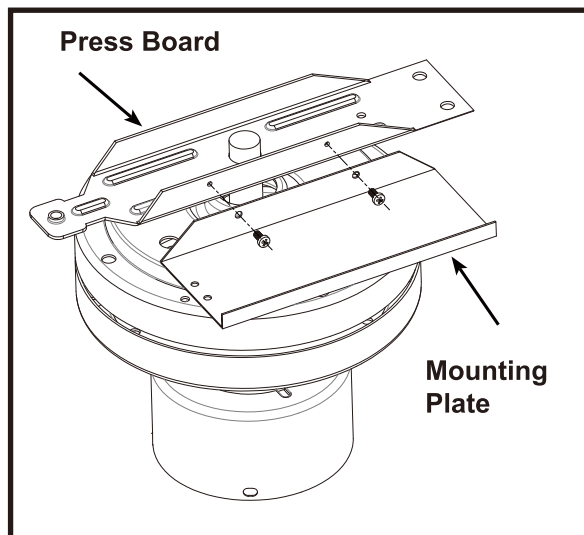
2. Use metal outlet box suitable for fan support (must support 35 lbs). Before attaching fan to outlet box, ensure the outlet box is securely fastened by at least two points to a structural ceiling member (a loose box will cause the fan to wobble).



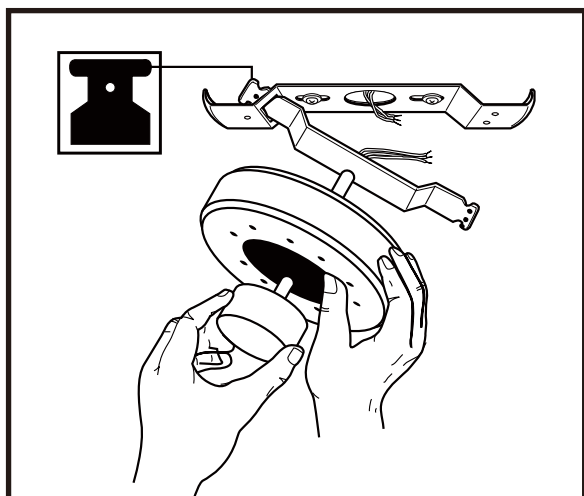
3. MOUNTING BRACKET INSTALLATION

Remove the screws and star washers (1) from the bracket as shown above. Loosen (do not remove) the screws (2) from the bracket as shown above. Install mounting bracket to outlet box in ceiling using the screws and washers provided with the outlet box.

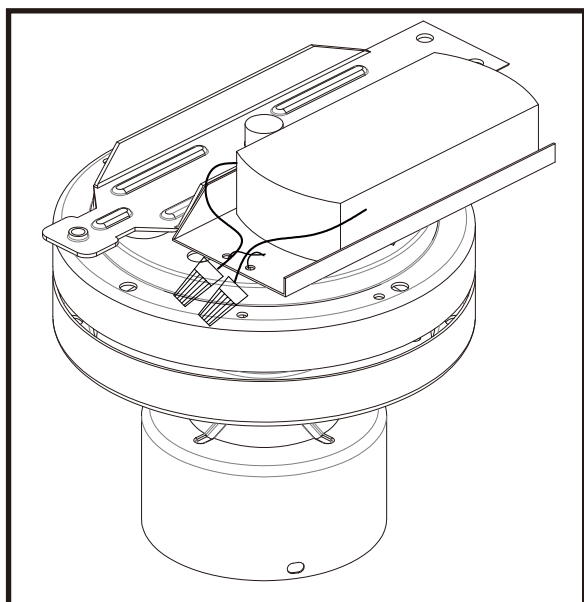
MOUNTING INSTALLATION



1. Attach the remote control receiver mounting plate to the press board on the motor, align the two holes and tighten the 2 screws provided.



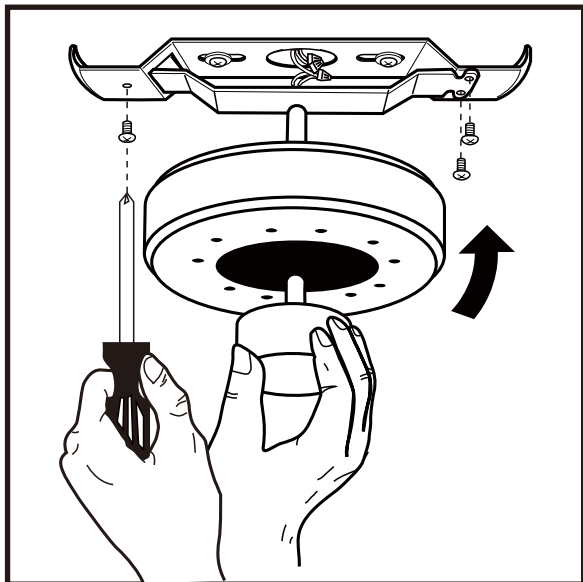
2. Remove screws from motor bracket and mounting plate. Hang fan from mounting plate by inserting "T"-shaped end of bracket into slot opening of mounting plate. This will allow for hands free wiring.



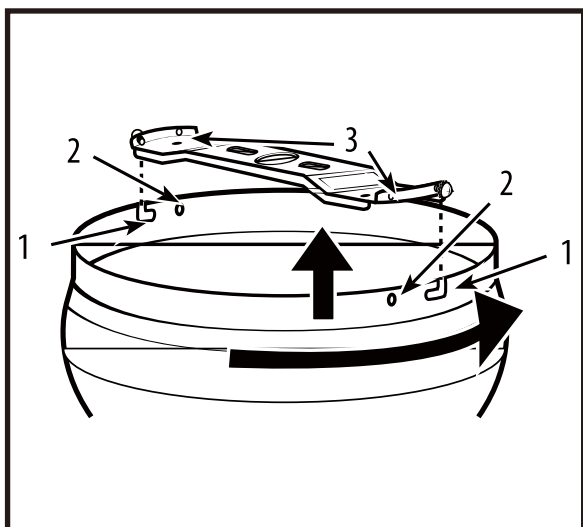
3. Place the remote control receiver on the plate and connect wire and then pull all wires STRAIGHT and TIE them well with provided plastic cable (in screw pack) to prevent motor rotating damage wire and avoid risk of short cut.

Please refer to page10~11for remote controller and receiver installation and operation detail.

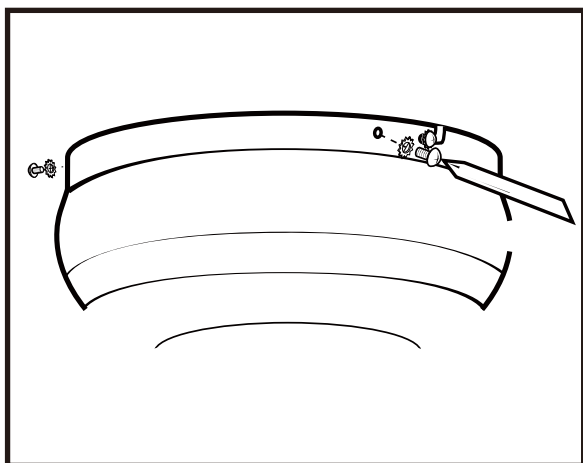
MOUNTING



1. Push motor upward and attach the motor to the mounting plate by tightly securing with screws and washers provided.

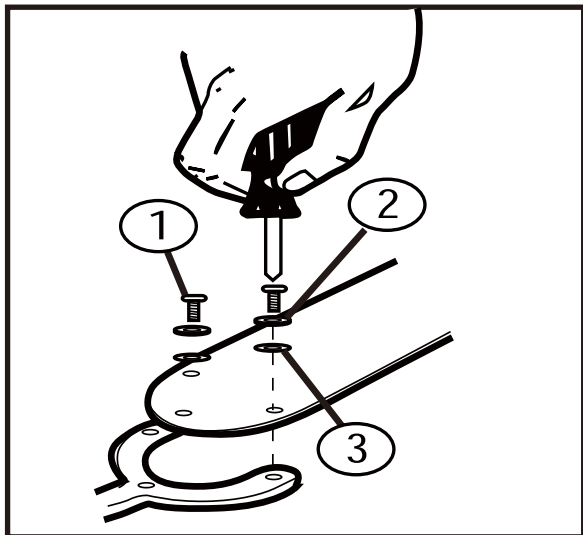


2. The decorative motor housing has two mating slots (1) and two mating holes (2). Position both slots on the motor housing directly under and in line with two screws in the mounting bracket (3). Lift the motor housing, allowing the two screws to slide into the mating slots. Rotate the motor housing counterclockwise until both screws from the mounting bracket drop into the slot recesses. Tighten screws securely.



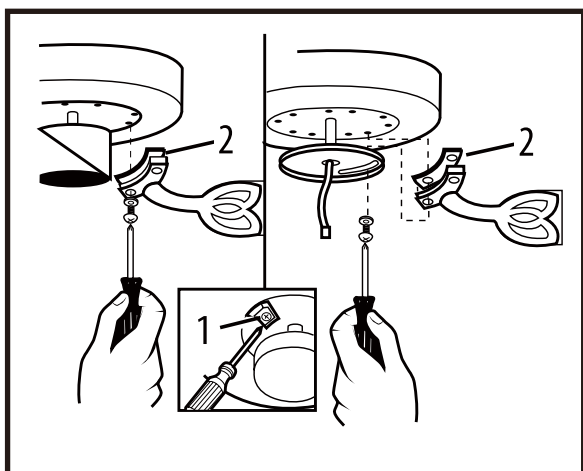
3. Install two screws and star washers into the mating holes of the motor housing and tighten to secure the housing to the mounting bracket.

BLADE INSTALLATION

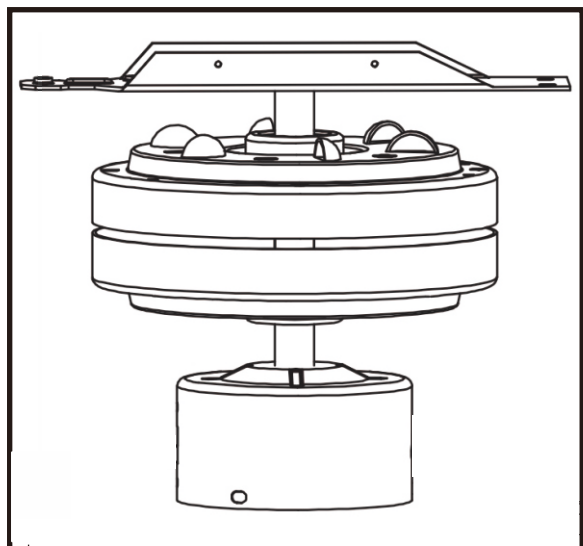


1. Attach blade brackets to blades using the blade bracket screws ①, metal washers ②, and fabric washers ③, if provided. NOTE: Some models do not utilize fabric washers ③.

The blade brackets must be attached to blade before attaching to motor. BE CAUTION the blade brackets not be deformed during installation to avoid fan wobble or noise.

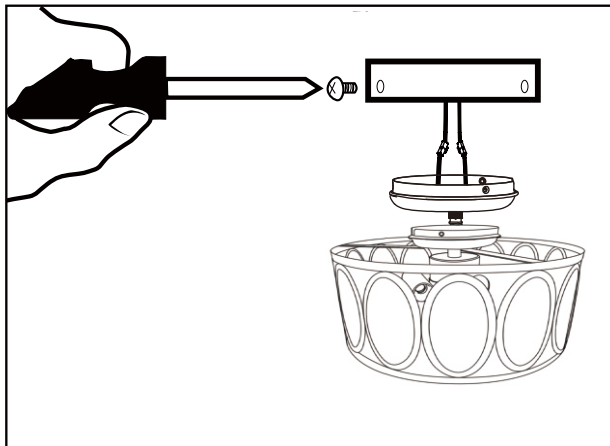


2. Check the motor for plastic shipping stabilizer tabs (1), and remove them if they are present. Attach blade assembly to motor using the noise-dampening motor gaskets (2) and motor screws provided. Tighten screws securely. NOTE: Some models do not utilize motor gaskets, washers, or stabilizer tabs.

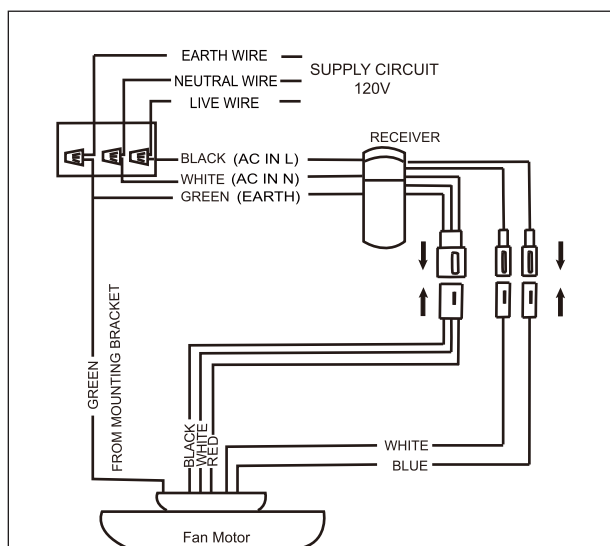


3. Always ensure that fan is set to "OFF" and blades are still prior to changing directions. Reverse switch on fan should ideally be set on "FORWARD" (DOWN position) during hot seasons to move blades in an anticlockwise direction & "REVERSE" (UP position) in cold seasons to make the fan rotate in clockwise direction.

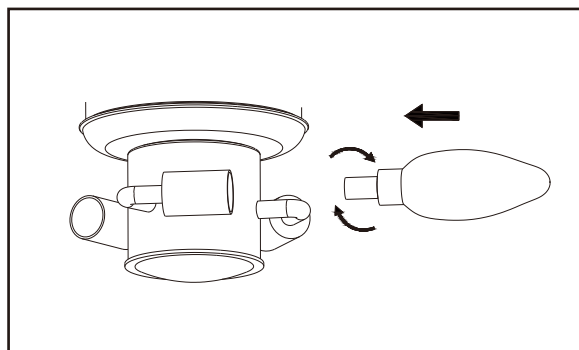
LIGHT FIXTURE INSTALLATION



1. Find the two wires from the switch housing with the tag that says FOR LIGHT. Connect the blue wire from the switch housing to the black wire from the light kit, and connect the white wire from the switch housing to the white wire from the light kit. Attach light kit to the switch housing using three small screws provided.



2. Use wire connectors to connect household supply and receiver wires according to the diagram and the following steps:
 - Insert the terminals on the controller's connecting wire properly
 - Connect the green wire from the downrod and mounting bracket to the Bare/Green (earth) supply wire.
 - Insert the terminals of the light kit into the terminals of the receiver.
 - Insert the terminals of the Motor into the terminals of the receiver.
 - Connect the Black wire with the Black label to the Black (live) supply wire.
 - Connect the White wire with the White label to the White (neutral) supply wire.



3. Rotate the three light bulbs (E12) clockwise into the three lamp holders.

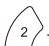

NOTE: This bulb is not an accessory and requires an additional purchase by the user.

REMOTE USING

FUNCTION INSTRUCTION OF EMITTER

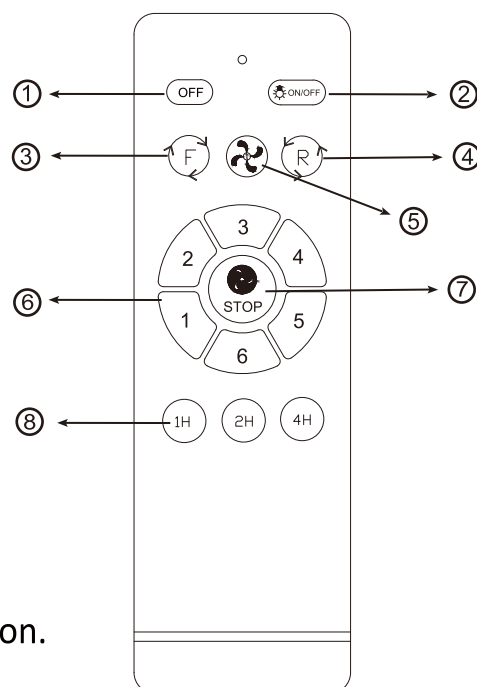
Learning code and matching mode is used between emitter and receiver.

- Open battery cover on the hand-held remote and install battery, pair of AAA of emitter (1.5V) that are not included.
- If the emitter can not control the fan, learning code matching mode is used between emitter and receiver.

Turn “ON” the supply power within 10 seconds and press the emitter’s “ +  ” button for 5 seconds, it can load normally after hearing a long sound “bee”, which means learning successfully and it can works normally.

- When the emitter cannot control the receiver, please check the battery switch touching normally or not, correction of the positive and negative, full or empty of the power.
- When the emitter cannot control the receiver, please check is there any existence of similar remote controlled products nearby, then check whether they works, because remote controlled product with the same frequency will disturb each other.
- Please take out the battery from the emitter when leaving unused for long time.
- When installing the fan, the fan ceiling cover don't press the antenna(or other wire), it is easy to breakdown the wire and short-circuited.

- ① ALL OFF
- ② Light ON/OFF(Matching Code)
Color Temperature Change
- ③ FAN Forward
- ④ FAN Reverse
- ⑤ Natural Wind
- ⑥ Speed Control
- ⑦ FAN OFF
- ⑧ Timer

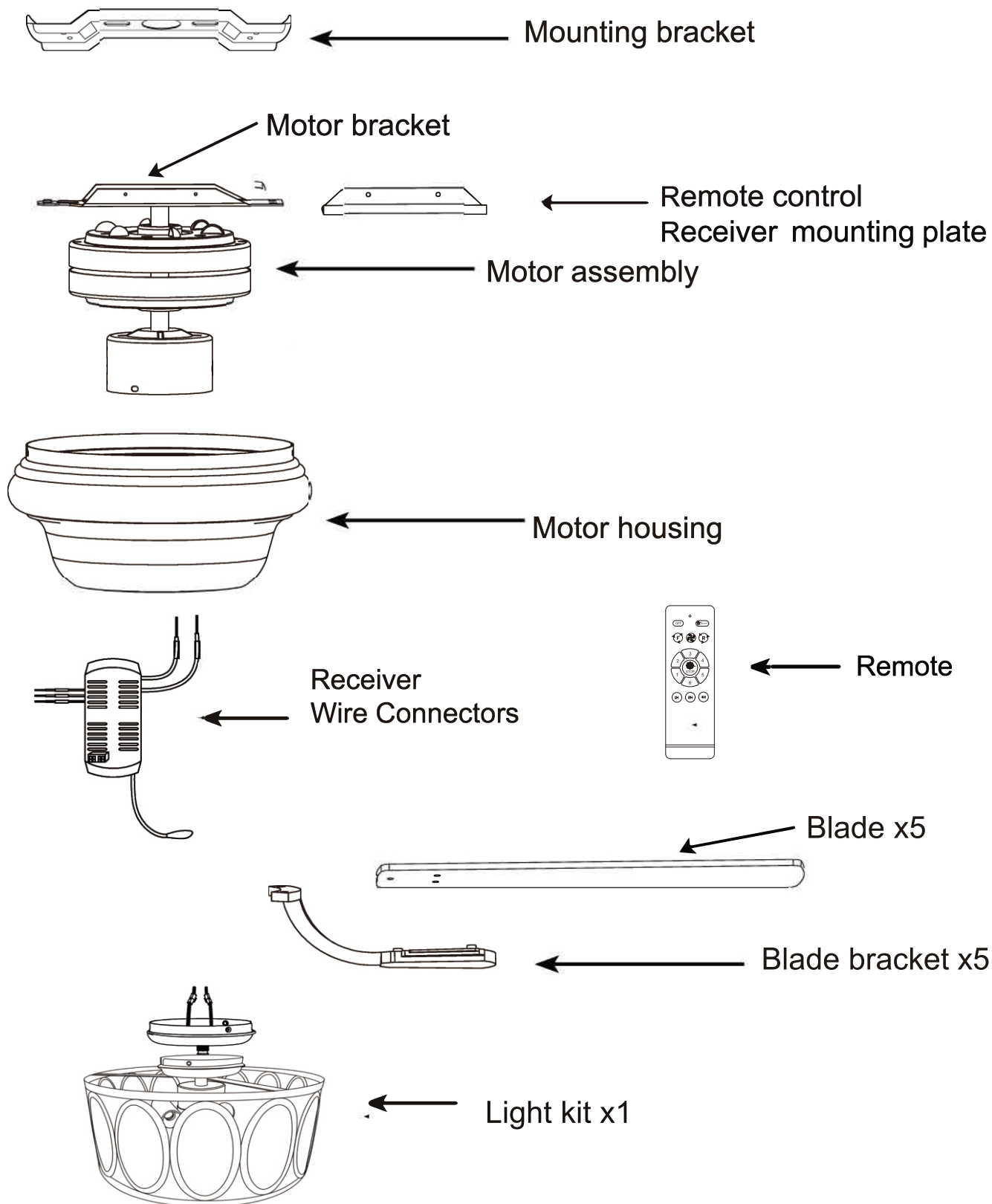


Light Memory Function:

- 1.The default light color when the ceiling fan is turned on.
- 2.The light will lock in a specific color temperature after turning off the light for 1 minute.
- 3.The color temperature will be the same as the last time when turning on the light next time.

NOTICE: If you turn it on and off immediately, it will change color.

PARTS INVENTORY



TROUBLESHOOTING

1. Fan will not start:

1. Check circuit fuses or breakers.
2. Check all electrical connections to insure proper contact.

CAUTION: Make sure the main power is OFF when checking any electrical connection.

2. Fan sounds noisy:

1. Make sure all motor housing screws are snug.
2. Make sure the screws that attach the fan blade brackets to the motor are tight.
3. Make sure wire nut connections are not rubbing against each other or the interior wall of the switch housing. **CAUTION:** Make sure main power is off.
4. Allow a 24-hour "breaking-in" period. Most noise associated with a new fan disappears during this time.
5. If using an optional light kit, make sure the screws securing the glassware are tight. Make sure the light bulbs are not touching any other component.

3. Fan wobble:

1. Check that all blade and blade arm screws are secure.
2. Most fan wobbling problems are caused by uneven blade levels. Check this level by selecting a point on the ceiling above the tip of one of the blades.
3. Measure this distance. Rotate the fan until the next blade is positioned for measurement. Repeat for each blade. This distance deviation should be equal within 1/8".
4. Use the enclosed Blade Balancing Kit if the blade wobble is still noticeable. If the blade wobble is still noticeable, interchanging two adjacent (side by side) blades can redistribute the weight and possibly result in smoother operation.