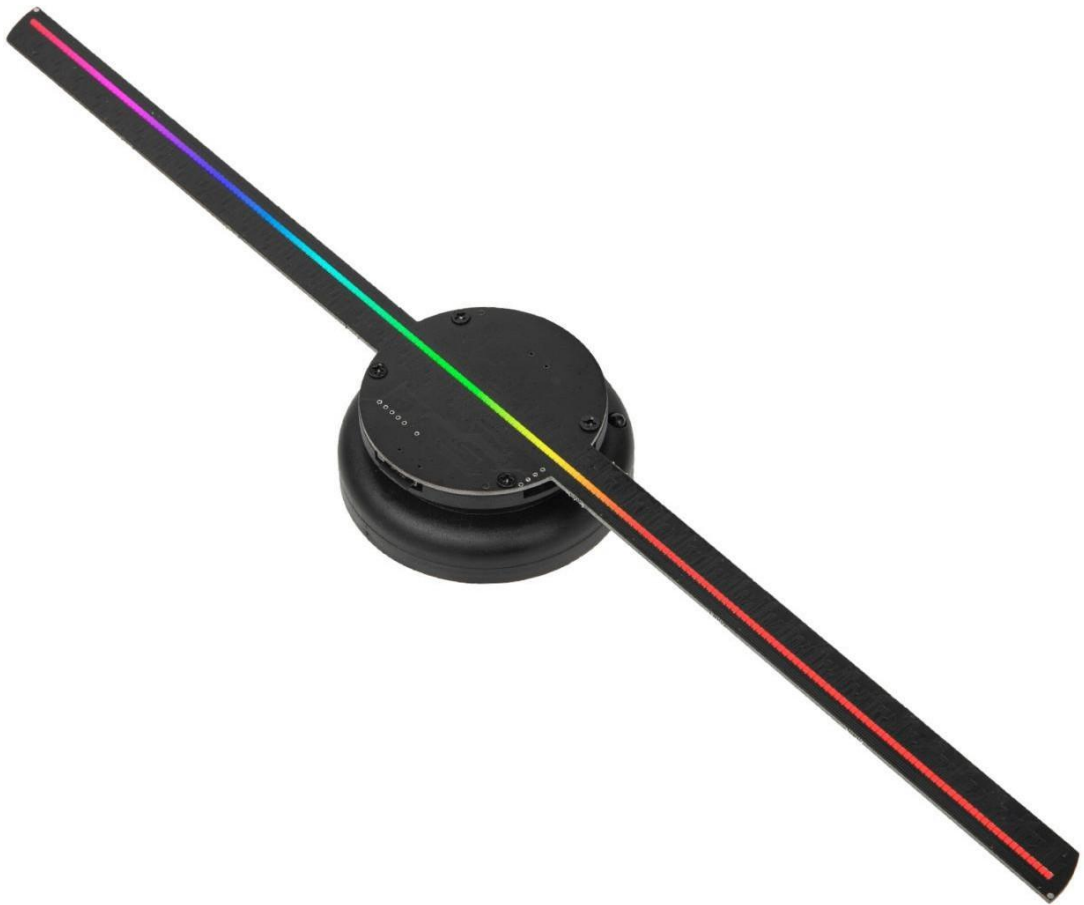


Holographic Advertising Machine



V2.1 Instructions

Table Of Contents

Holographic Advertising Machine

I. Package Including

II. Product Specifications

III. Installation Steps

IV. Software Description

V. Software Operations

Transforming Media Through Computer

Transforming Media Through Cell Phone

VI. New App Function Introduction

1. Gallery

2. Design

3. Camera

VII. Remote Control Introduction

Preface:

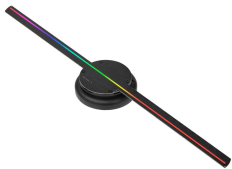
Thank you for choosing this product. In order to make the best use of the item, please read user manual first thoroughly and follow instructions strictly.

I. Package Including

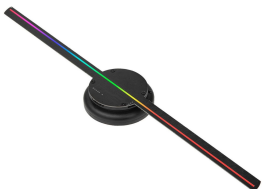
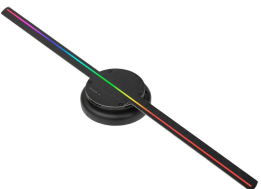
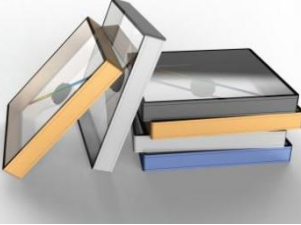
Serial number	Items	Quantity
1	Holographic Advertising Machine	1
2	Adder Fixed Pendant	1
3	Remote Control	1
4	SD Card	1
5	Card Reader	1
6	Power Adapter	1
7	Screw Pack	1
8	Instructions	1

* Please confirm that your package is complete. If there's item absent or damaged, you could contact your original purchasing dealer for assistance.

II. Product Specifications

Product model	T23 highlight (23 CM)	T32 highlight (32 CM)	T40 General Edition (41 CM)
Picture			
Dimensions (MM)	230*80*30	320*80*30	410*80*30
Display diameter (MM)	230*230	320*320	400*400
Resolution	1024*224	1024*224	640*640
Number of lamp beads	224	224	224
Visual Angle	178	178	180
Rated power	10-15w	10-15w	10-15w
Power input voltage	100-240V/AC 50/60Hz	100-240V/AC 50/60Hz	100-240V/AC 50/60Hz
Power output voltage	12V2A	12V2A	12V2A
Remote control (multifunction)	√	√	√
SD memory card	8G	8G	8G
Bluetooth Audio	×	×	×
Multiple synchronization	√	√	√
Multiple splicing	×	×	×
Video/picture format	MP4/AVI/GIF/JPG/PNG	MP4/AVI/GIF/JPG/PNG	MP4/AVI/GIF/JPG/PNG
Software Support System	Card/mobile APP/ computer	Card/mobile APP/ computer	Card/computer
Cloud functionality	×	×	×
Brightness adjustment	√	√	√
Angle adjustment	√	√	√
Shelf life	A year	A year	A year
Product characteristics	Multifunctional remote control. Text ball	Multifunctional remote control. Text ball	Multifunctional remote control. Text ball
Packing Size (MM)	467*110*78	467*110*78	467*110*78
Packing Weight (KG)	0.5	0.5	0.5

V2.1 Instructions

Product model	T40 Plain Edition (41 CM)	T40 highlight (41 CM)	T45 all-in-one
Picture			
Dimensions (MM)	410*80*30	410*80*30	450*450*60
Display diameter (MM)	400*400	400*400	400*400
Resolution	640*640	800*800	800*800
Number of lamp beads	224	224	224
Visual Angle	180	180	170
Rated power	10-15w	10-15w	10-15w
Power input voltage	100-240V/AC 50/60Hz	100-240V/AC 50/60Hz	100-240V/AC 50/60Hz
Power output voltage	12V2A	12V2A	12V2A
Remote control (multifunction)	✓	✓	✓
SD memory card	8G	8G	8G
Bluetooth Audio	×	×	×
Multiple synchronization	✓	✓	✓
Multiple splicing	×	×	×
Video/picture format	MP4/AVI/GIF/JPG/PNG	MP4/AVI/GIF/JPG/PNG	MP4/AVI/GIF/JPG/PNG
Software Support System	Card/mobile APP/ computer	Card/mobile APP/ computer	Card/mobile APP/ computer
Cloud functionality	×	×	×
Brightness adjustment	✓	✓	✓
Angle adjustment	✓	✓	✓
Shelf life	A year	A year	A year
Product characteristics	Multifunctional remote control. Text ball	Multifunctional remote control. Text ball	Multifunctional remote control. Text ball
Packing Size (MM)	467*110*78	467*110*78	495*95*587
Packing Weight (KG)	0.5	0.5	2.75

V2.1 Instructions

Note:

1. Please do not touch machine and better to place it far away from kids' reach when it is on and working to prevent injuries.

2. Please clean water drops and dust regularly to avoid damage after a period of time. For outdoor use, please protect it with a cover.

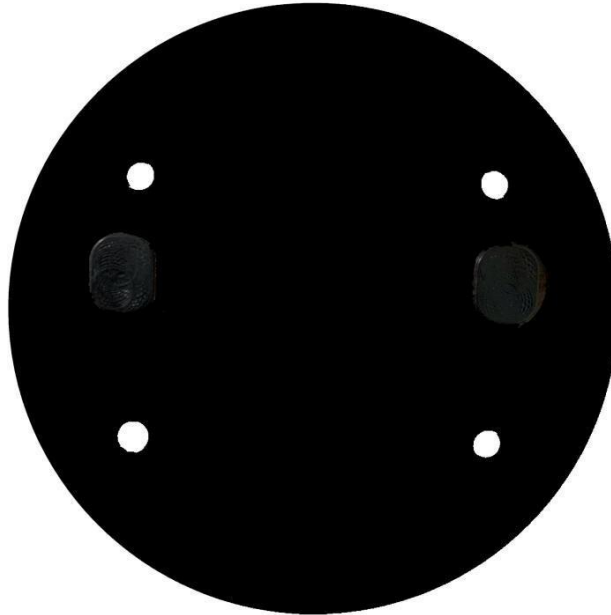
3. Please do not disassemble this product by yourself to avoid injury.

4. The machine would work properly in temperature somewhere between -20°C to 60°C (-4°F to 140°F). It is not recommend to use the machine if the temperature is lower than -20°C / -4°F or higher than 60°C / 140°F .

5. Please do not use or store the machine in high temperature, high pressure, strong magnetic field, heavy dust and damp environment.

III. Installation Steps

1.Set 4 fixed holes in the target installation area.



2.Use self-tapping screws to fix the pendant and fasten the machine to the fixed pendant.

3. Power the machine.

IV. Software Description

Dear Customer:

Thank you for using our holographic advertising machine. Please prepare videos and images first. The media materials would be better to follow the points below to get a better effect.

	VIDEO	IMAGE
Background	BLACK(better 3D effect)	BLACK(better 3D effect)
Transformable Format	AVI, RMVB, GIF	JPG, PNG
Resolution	800*800 and above	800*800 and above
Length	10-120 sec	

3D video/picture [black background]



Tips:

1. The software from SD card inside machine runs on Windows7/10 systems.
2. This machine only plays the files in BIN format transformed from the software inside the SD card.

V. Software Operations

Transforming Media Through Computer

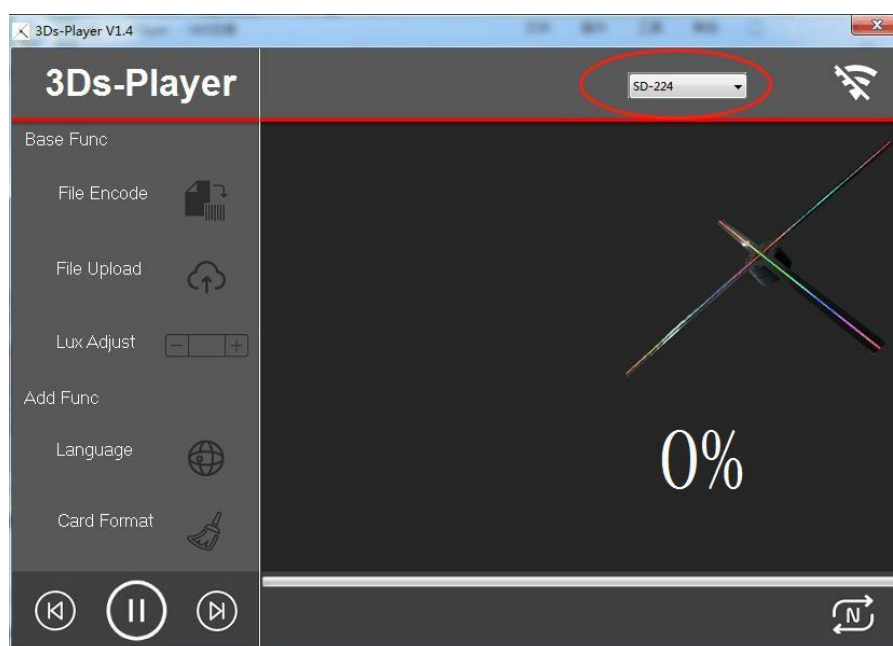
Step 1: Take the SD card out by Pushing the card in and then you can get the SD card from the machine.

Step 2: Insert the SD card into computer slot.

Step 3: Double-click “3Ds-Player V1.4.exe” to unzip and run the App.

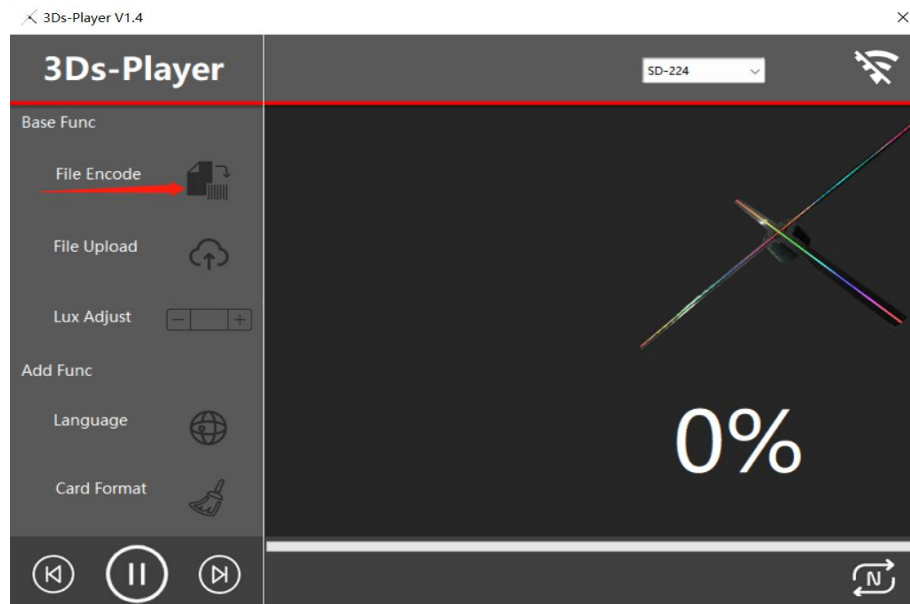
Name	Date modified	Type	Size
3Ds-Player V1.4.exe	5/13/2020 4:18 PM	Application	1,763 KB
api-ms-win-core-file-l1-2-0.dll	4/12/2018 7:34 AM	Application extens...	11 KB
API-MS-Win-core-file-l2-1-0.dll	4/12/2018 7:34 AM	Application extens...	11 KB
api-ms-win-core-localization-l1-2-0.dll	4/12/2018 7:34 AM	Application extens...	14 KB
api-ms-win-core-processthreads-l1-1-1.dll	4/12/2018 7:34 AM	Application extens...	12 KB
api-ms-win-core-synch-l1-2-0.dll	4/12/2018 7:34 AM	Application extens...	12 KB
api-ms-win-core-timezone-l1-1-0.dll	4/12/2018 7:34 AM	Application extens...	12 KB
api-ms-win-crt-convert-l1-1-0.dll	4/12/2018 7:34 AM	Application extens...	15 KB
api-ms-win-crt-environment-l1-1-0.dll	4/12/2018 7:34 AM	Application extens...	12 KB
api-ms-win-crt-filestream-l1-1-0.dll	4/12/2018 7:34 AM	Application extens...	13 KB
api-ms-win-crt-heap-l1-1-0.dll	4/12/2018 7:34 AM	Application extens...	12 KB

Step 4. Choose mode SD-224



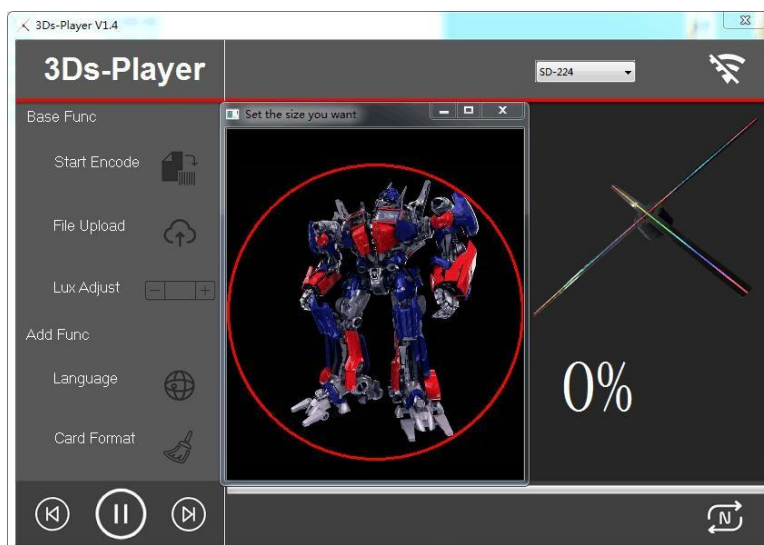
V2.1 Instructions

Step 5. Click the icon right after “File Encode” to select media.



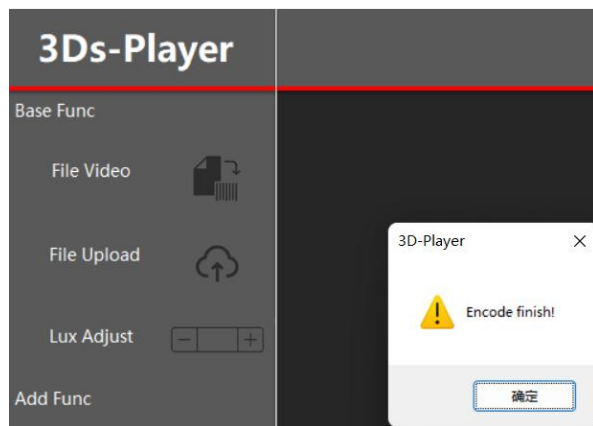
Step 6. Enter the name for the transformed media and store it in U disk(aka SD card).

Step 7. Drag red circle to select the part you want to show. You can also minimize or maximize size of the red circle by scrolling scroll wheel while pressing and hold “ctrl” at the same time.



V2.1 Instructions

Step 8. Click the icon right after “Start Encode” to start transforming.

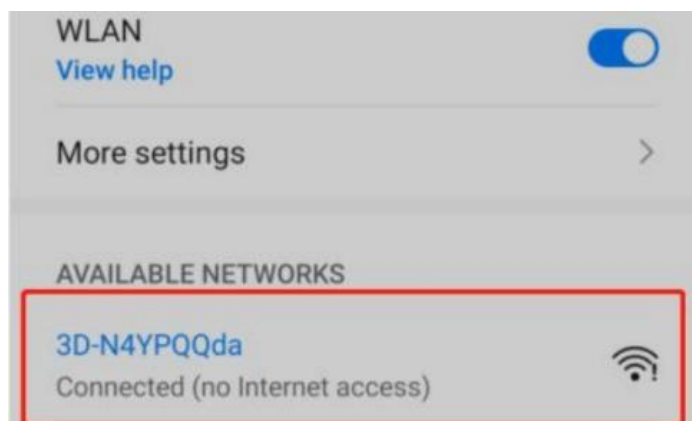


Transforming Media Through Cell Phone

Step 1: Download app



Step 2: Go to your phone's settings and connect to the 3D WIFI.
(Please press “RUN” button on remote control first to activate 3D WIFI)



V2.1 Instructions

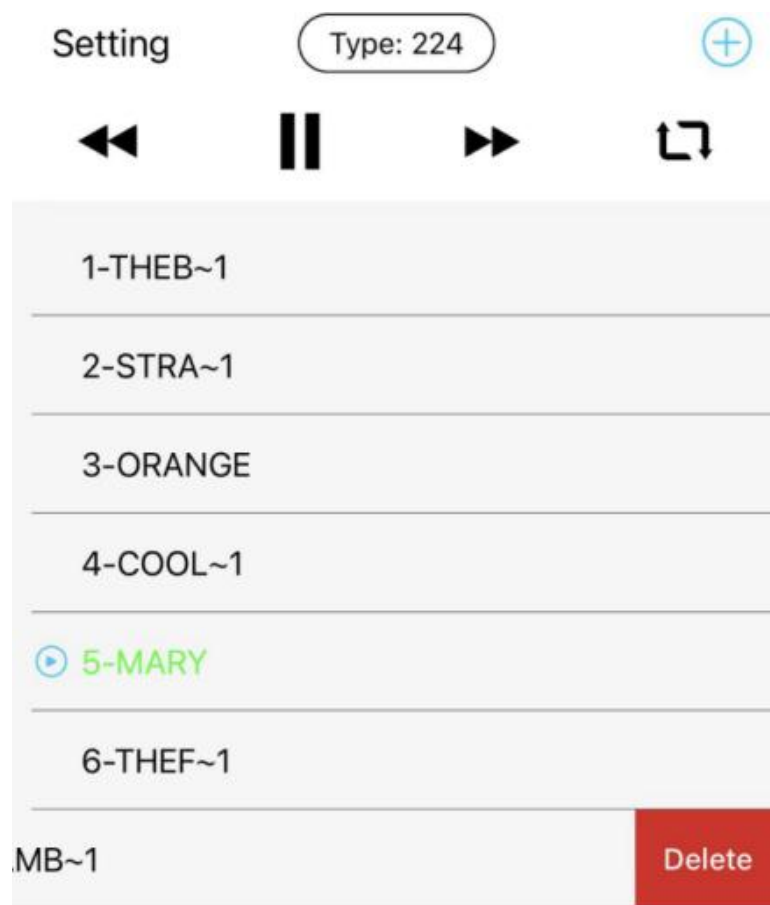
Step 3: Open APP Model Selection SD-224



Step 4: Click "+" to upload a video or file

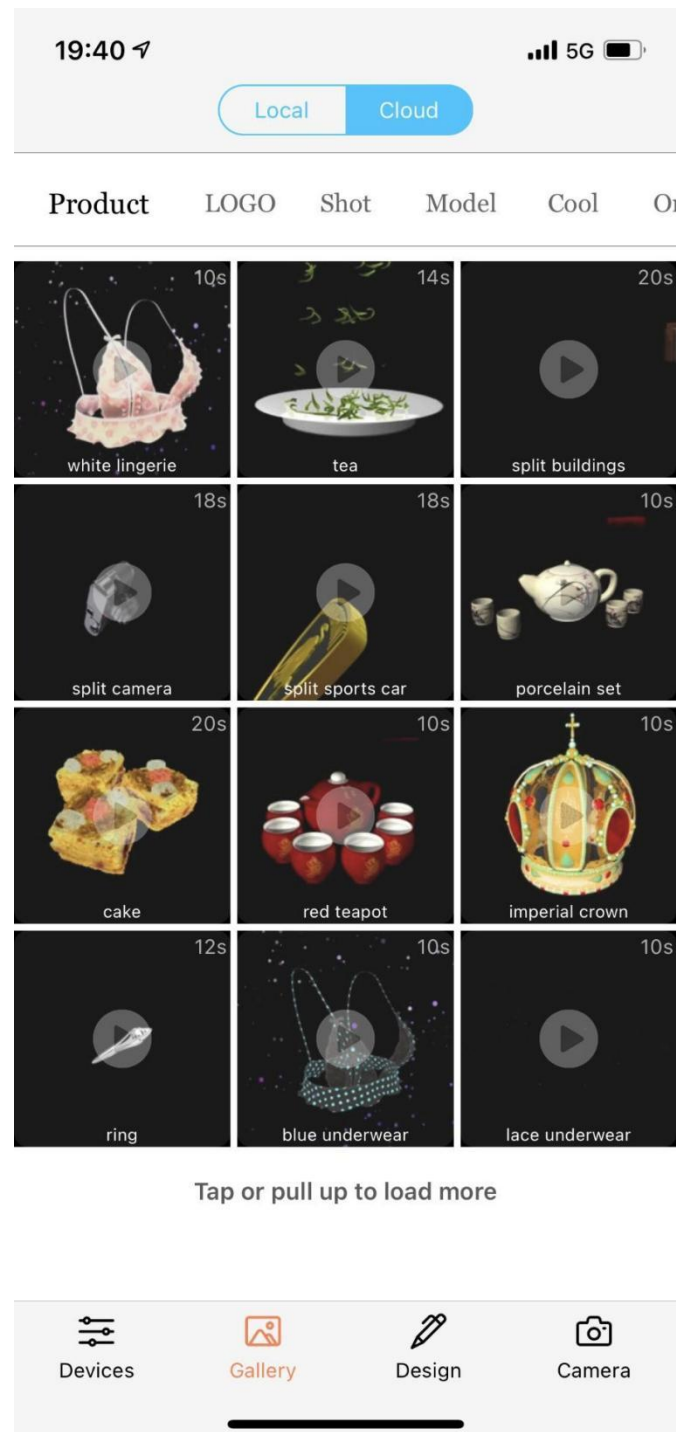


Tips: How to delete media? Swipe it from right to left.

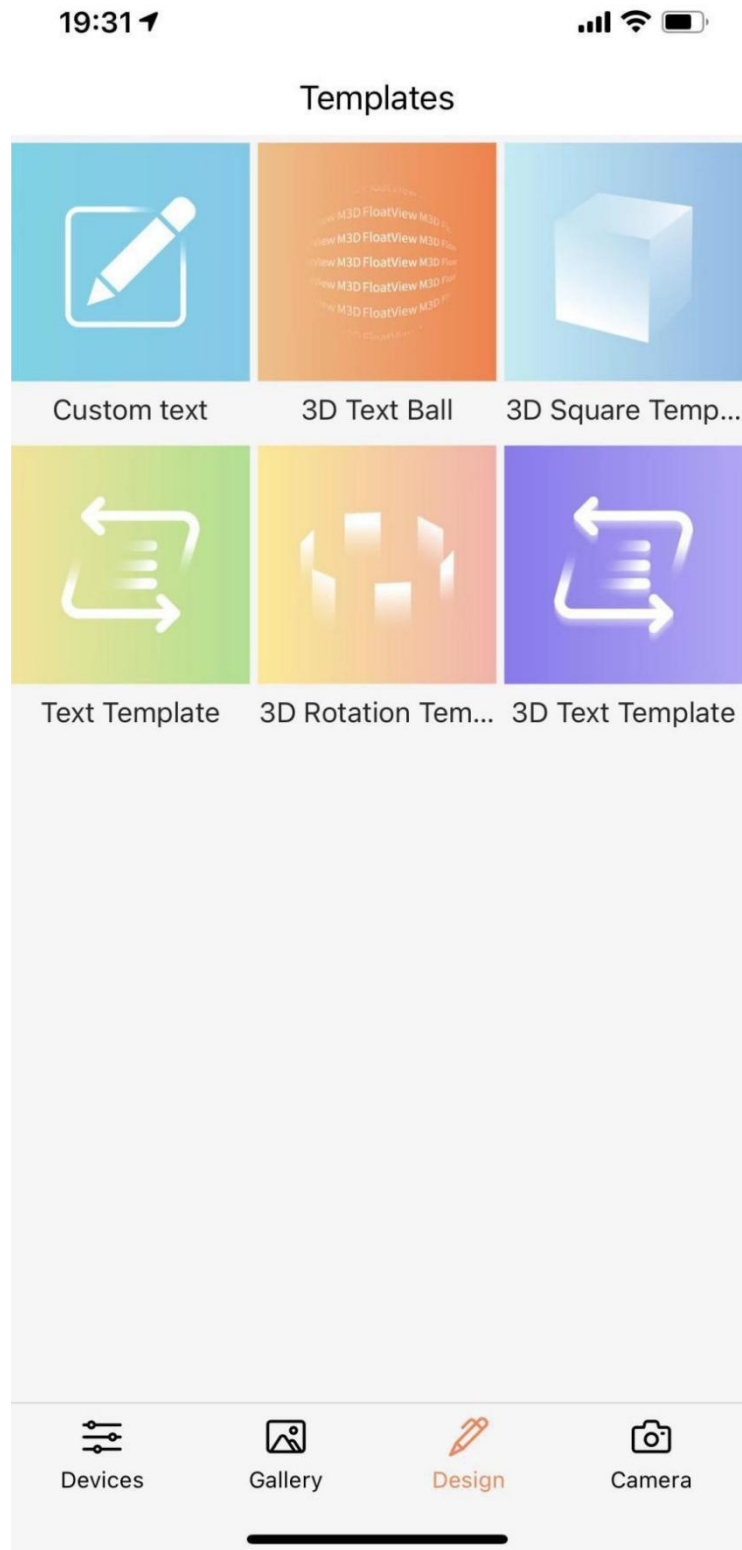


VI. New App Function Introduction

1. Gallery : Free Videos Provided To Download

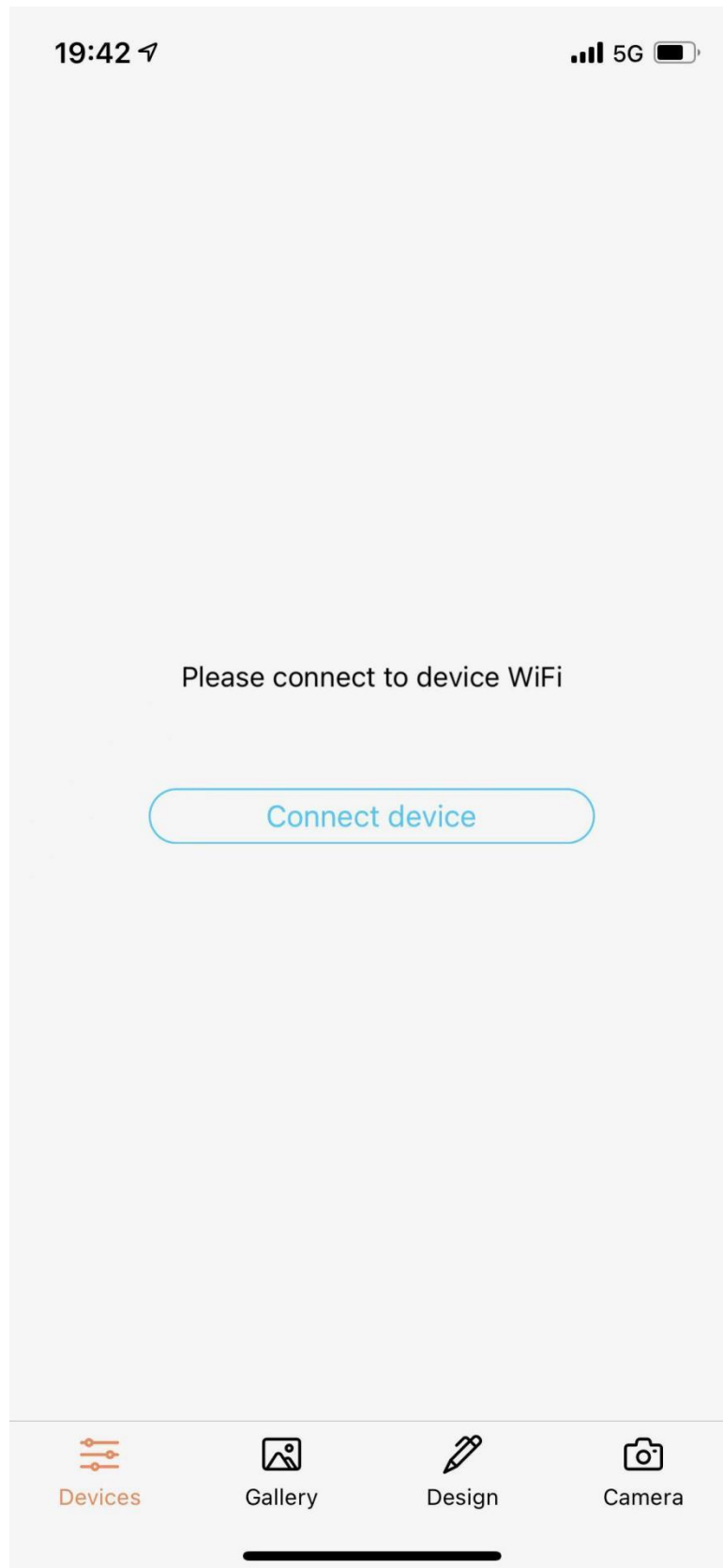


2. Design : Independent and Personalized Design 3D Video



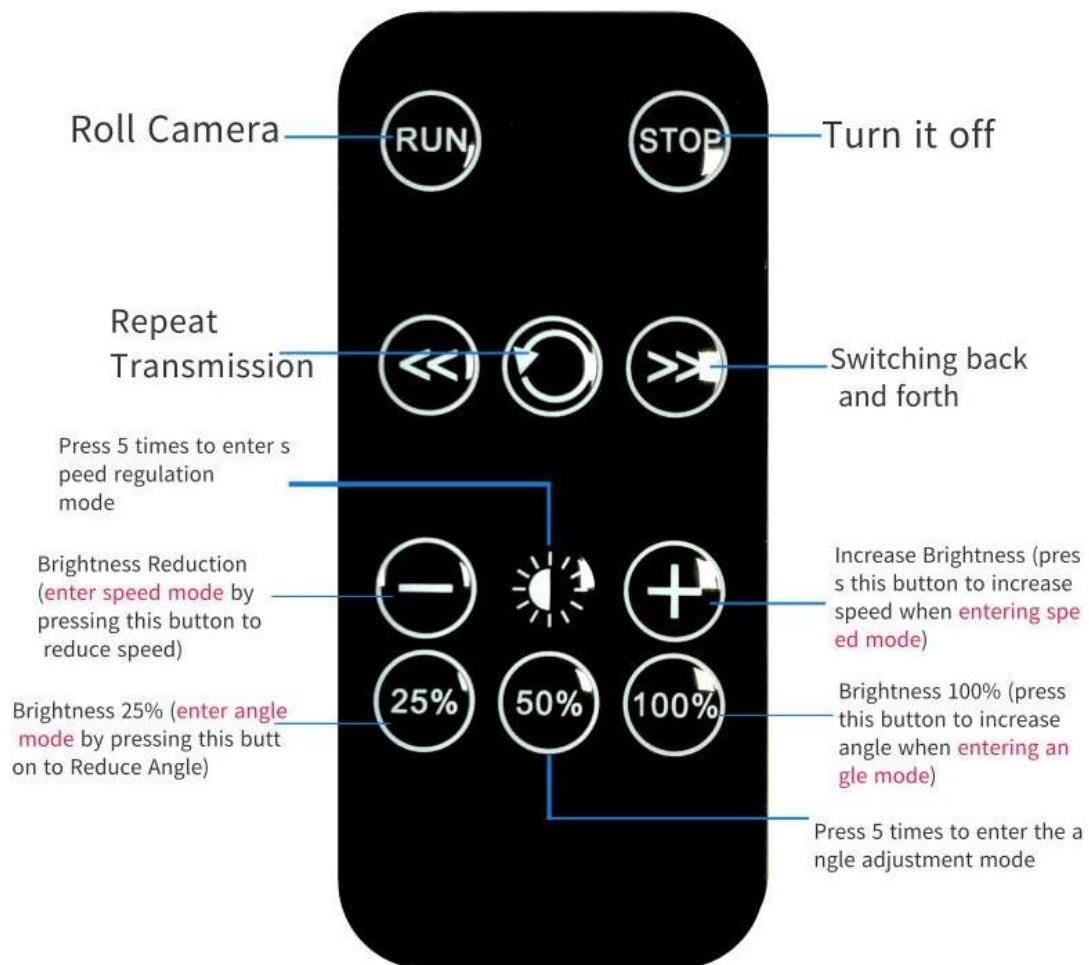
V2.1 Instructions

3. Camera: Shooting Your Own Videos and Images.



VII. Remote Control Introduction

The product is equipped with a remote control. Detailed introduction is as follow:



Product warranty card

User association

User name:

Product Model:

User address:

Date of purchase:

Maintenance Federation

Maintenance
date

Fault description and
handling

Maintenance
personnel

*If failure occurs in accordance with the instructions for normal use during the warranty period, we'll offer you repair customer service. Please fill in this card and hold this card to the purchase store or designated store for maintenance;

*It is not covered by the warranty if maintenance is needed out of product quality reasons like improper usage, custody, unauthorized disassemble of machines, transportation, beyond warranty period and other non-product quality causes.