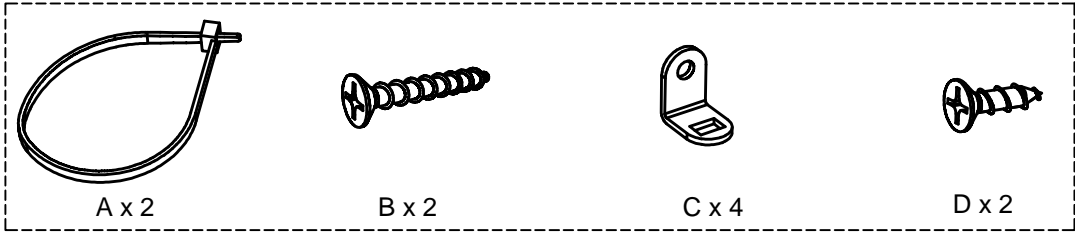


ASSEMBLY INSTRUCTIONS

ITEM #: 8000050

Page 01 of 03

HARDWARES



M6 x 15mm
E x 12



Ø6.1 x 12.8 x 2mm
F x 12



Ø6.4 x 16 x 2mm
G x 12

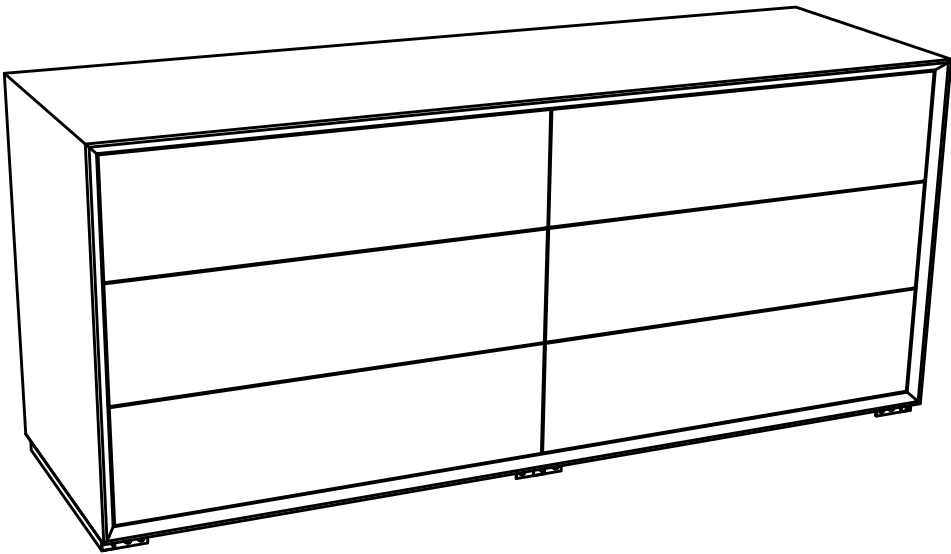


M4 x 15mm
H x 8

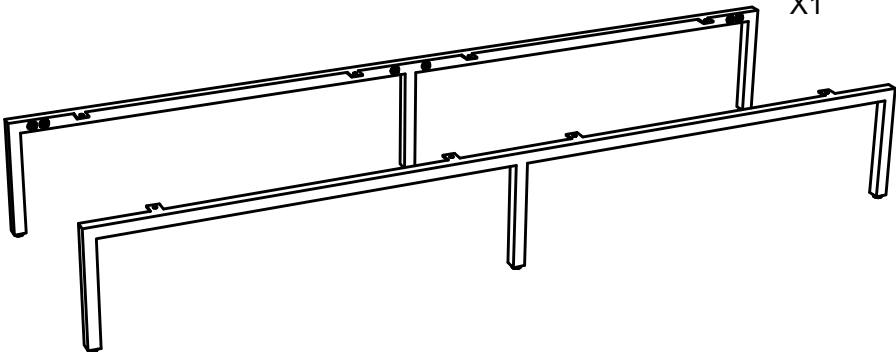


M4
Z x 1

PARTS

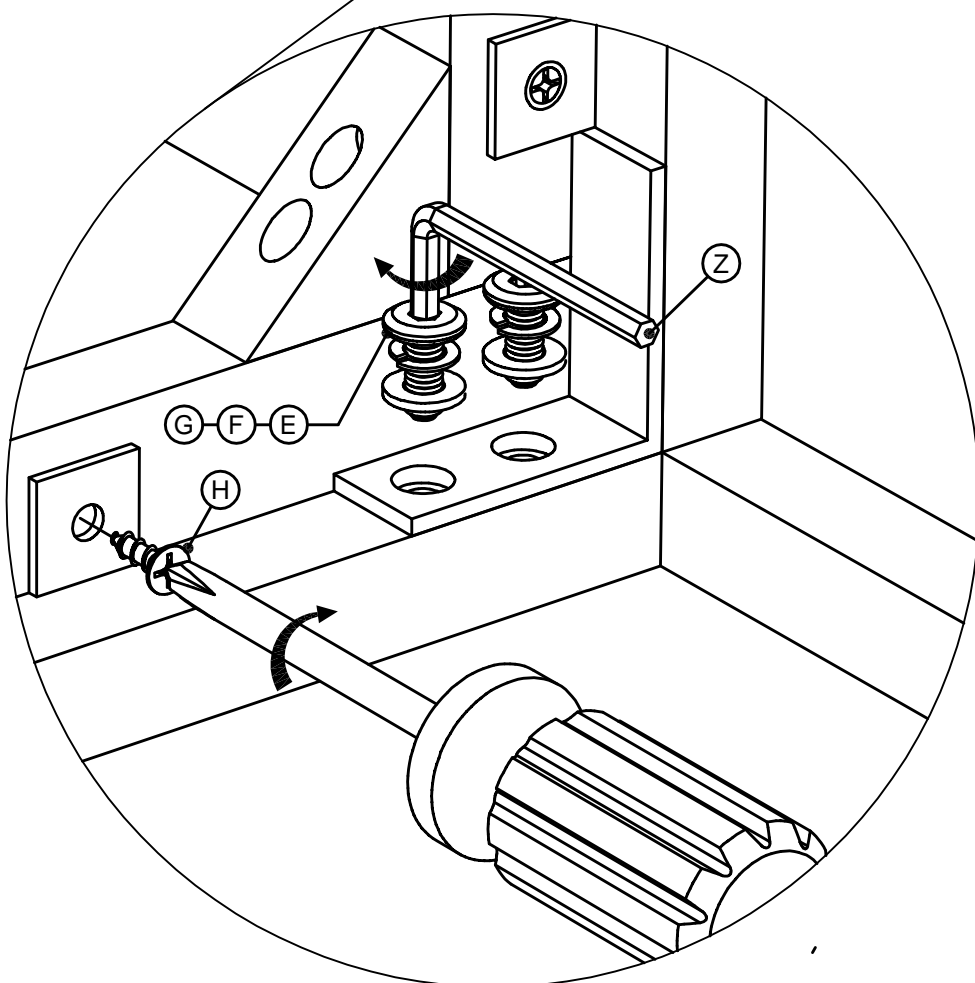
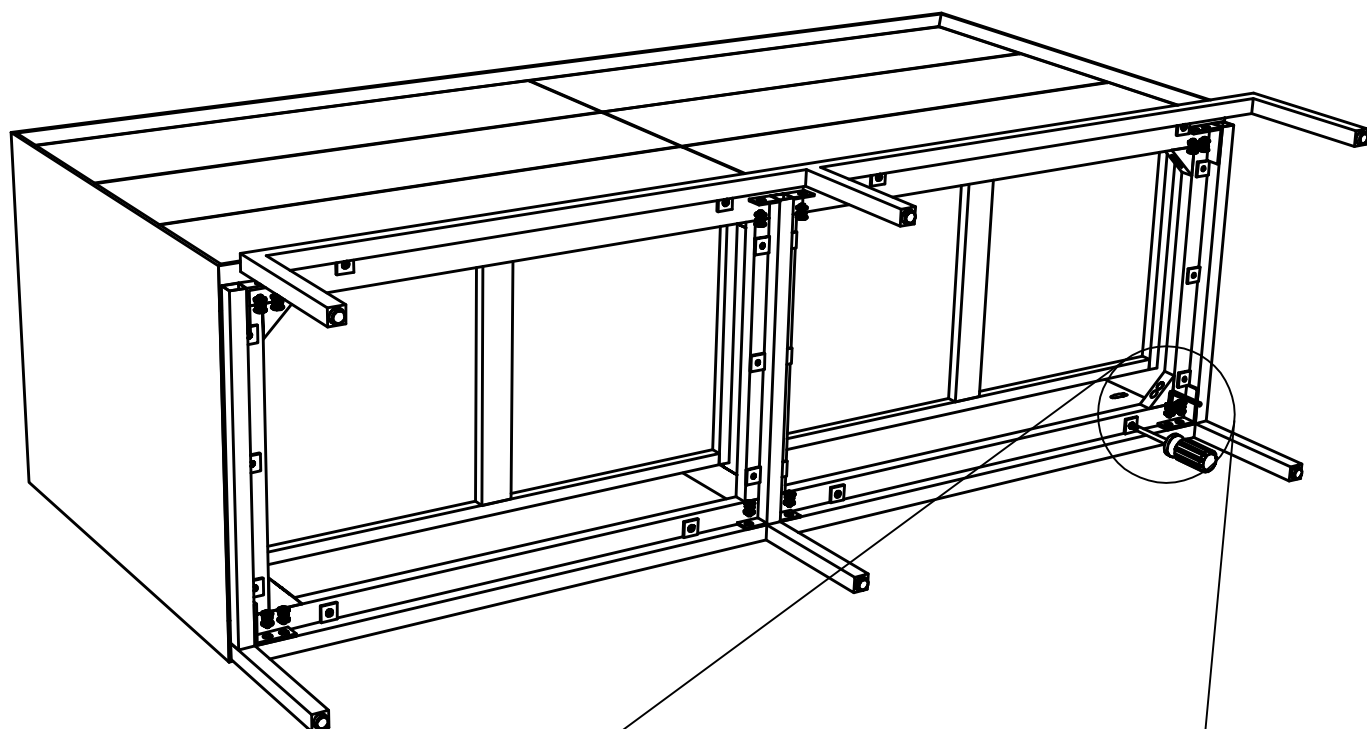


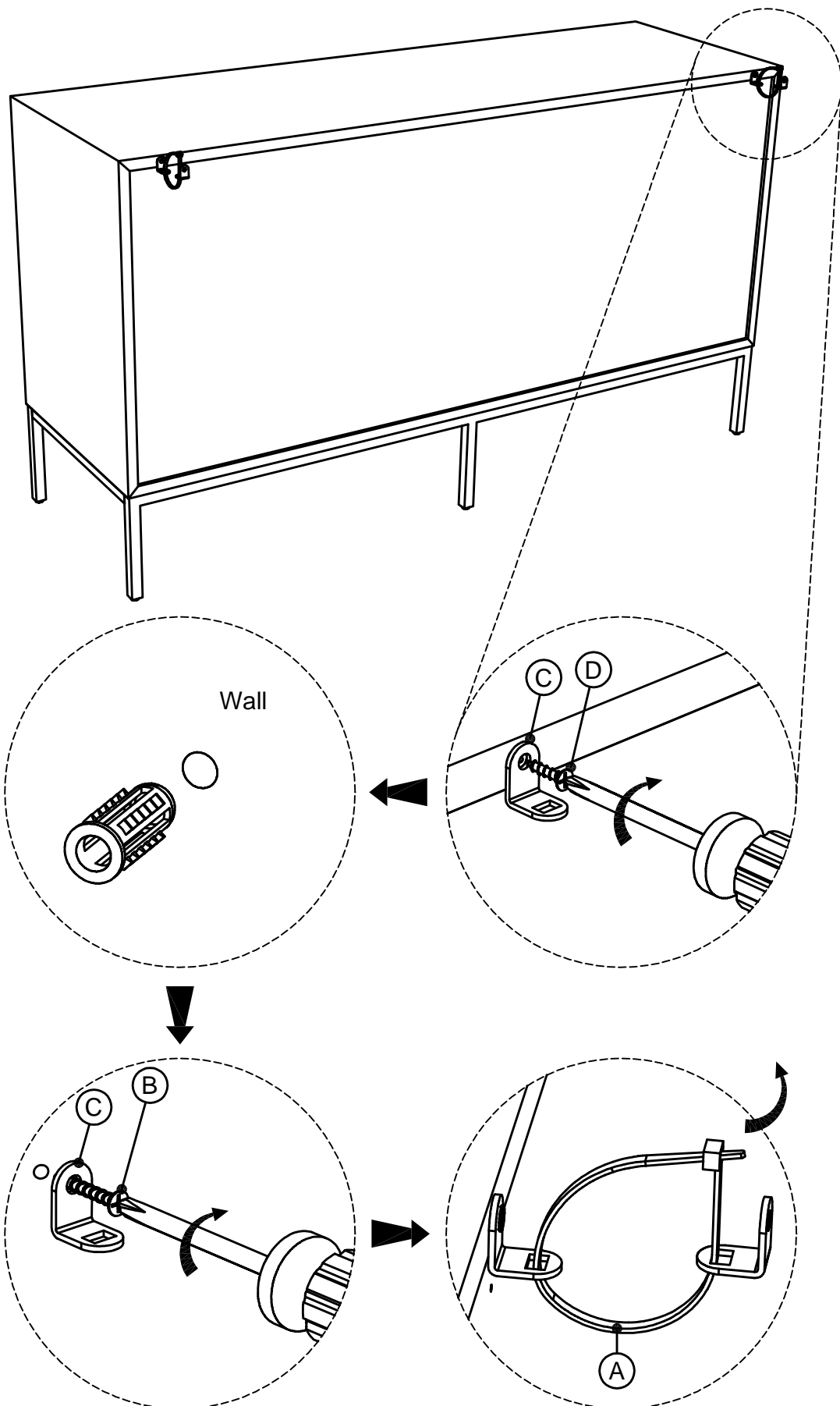
X1



X1

X1





"IMPORTANT"

1. Wall fixings are not supplied. Please secure the unit to your wall using the appropriate fixings for your wall type, there are readily available from your local DIY/ home improvement stores.
2. Before drilling into your wall check for wires or electric cables.