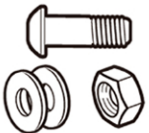


TOOLS REQUIRED



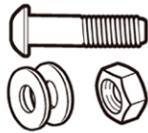
HARDWARE

1 M6 x 35mm
BOLT SET



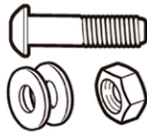
6 PCS

2 M6 x 50mm
BOLT SET



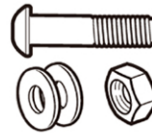
2 PCS

3 M6 x 55mm
BOLT SET



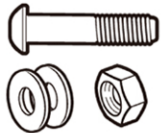
8 PCS

4 M6 x 68mm
BOLT SET



4 PCS

5 M6 x 80mm
BOLT SET



4 PCS

6 END CAP



24 PCS

7 M6 NUT CAP



24 PCS

8 SPACER

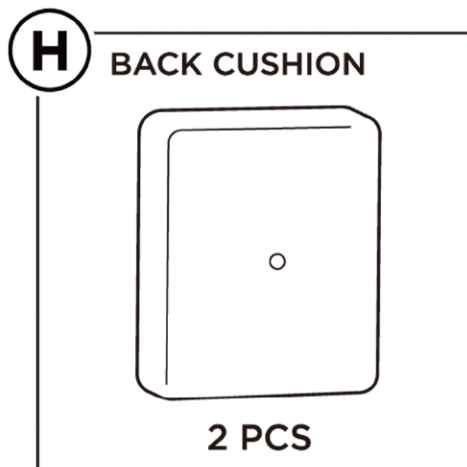
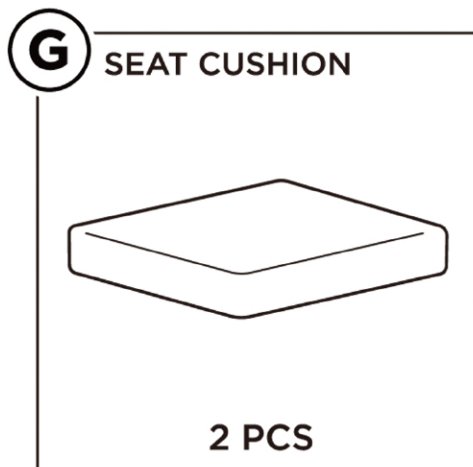
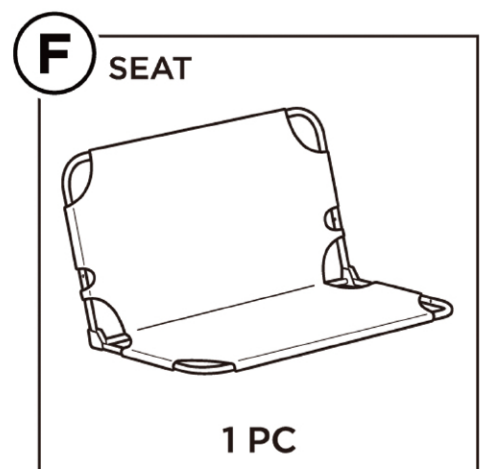
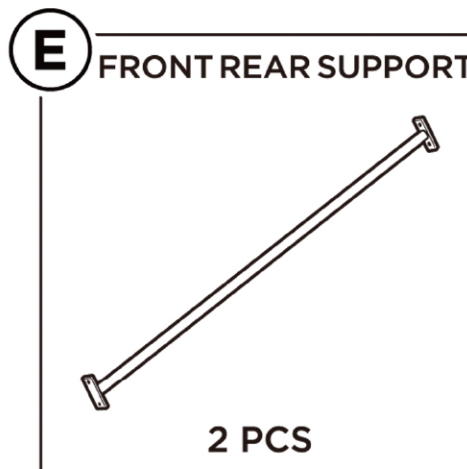
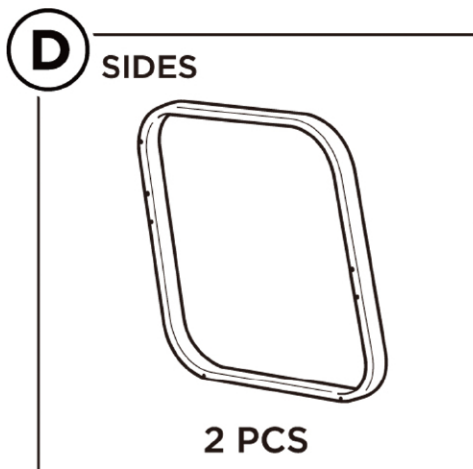
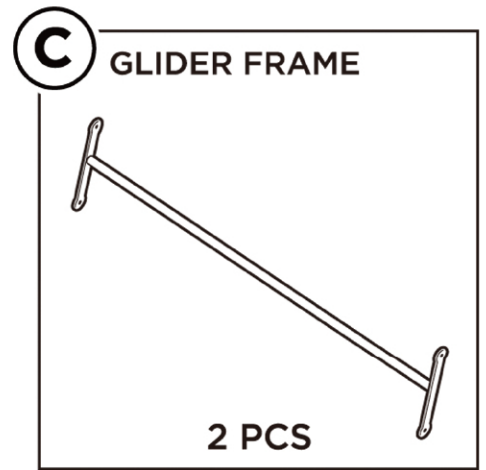
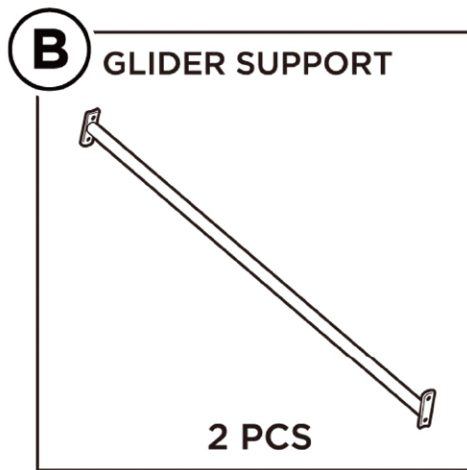
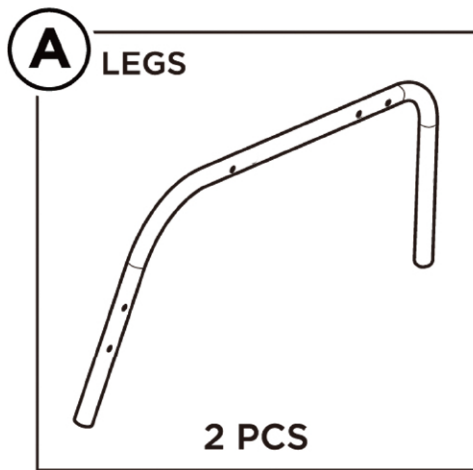


8 PCS

9 SPACER

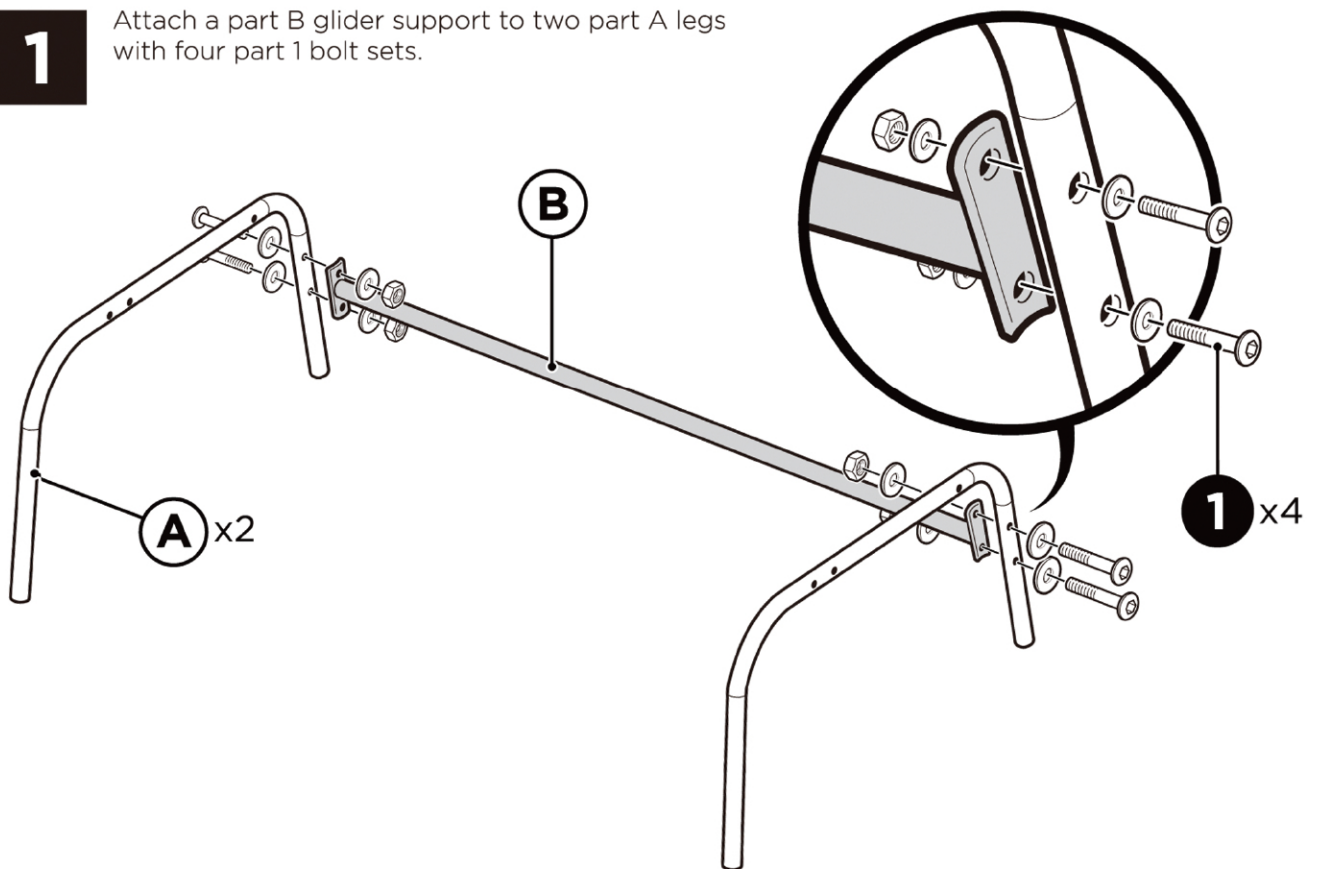


4 PCS

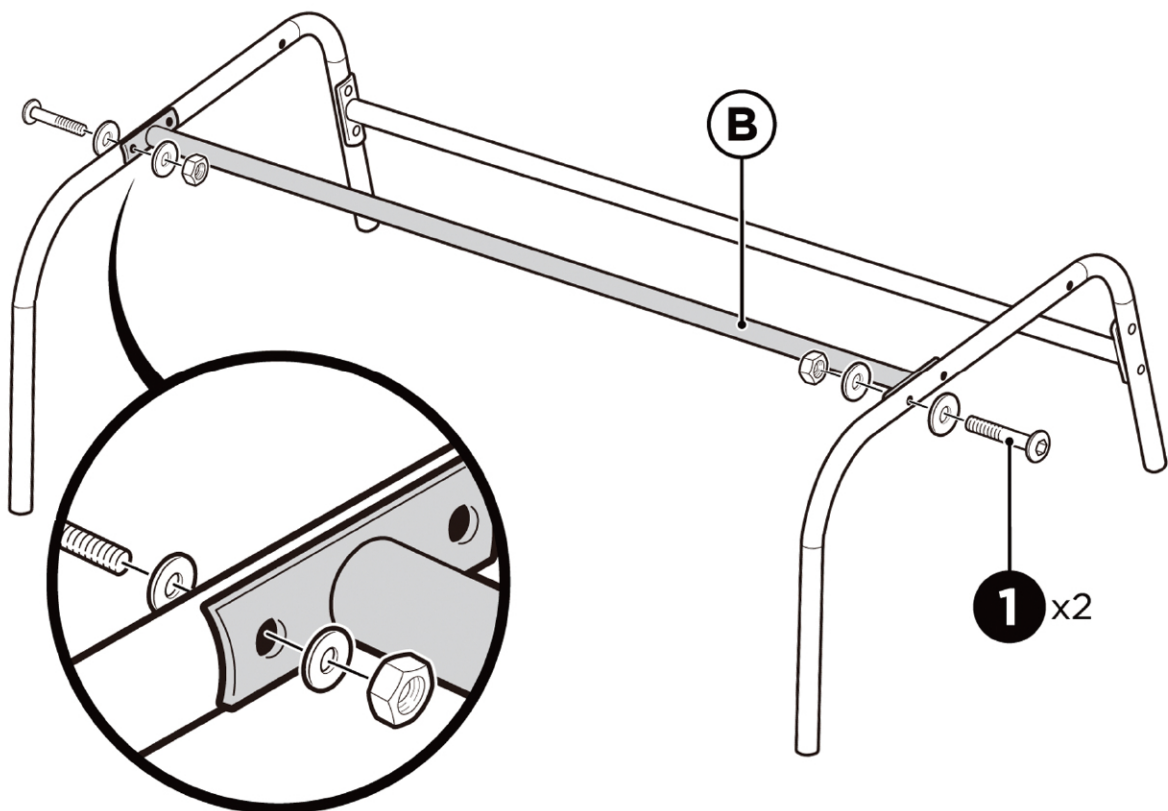


1

Attach a part B glider support to two part A legs with four part 1 bolt sets.

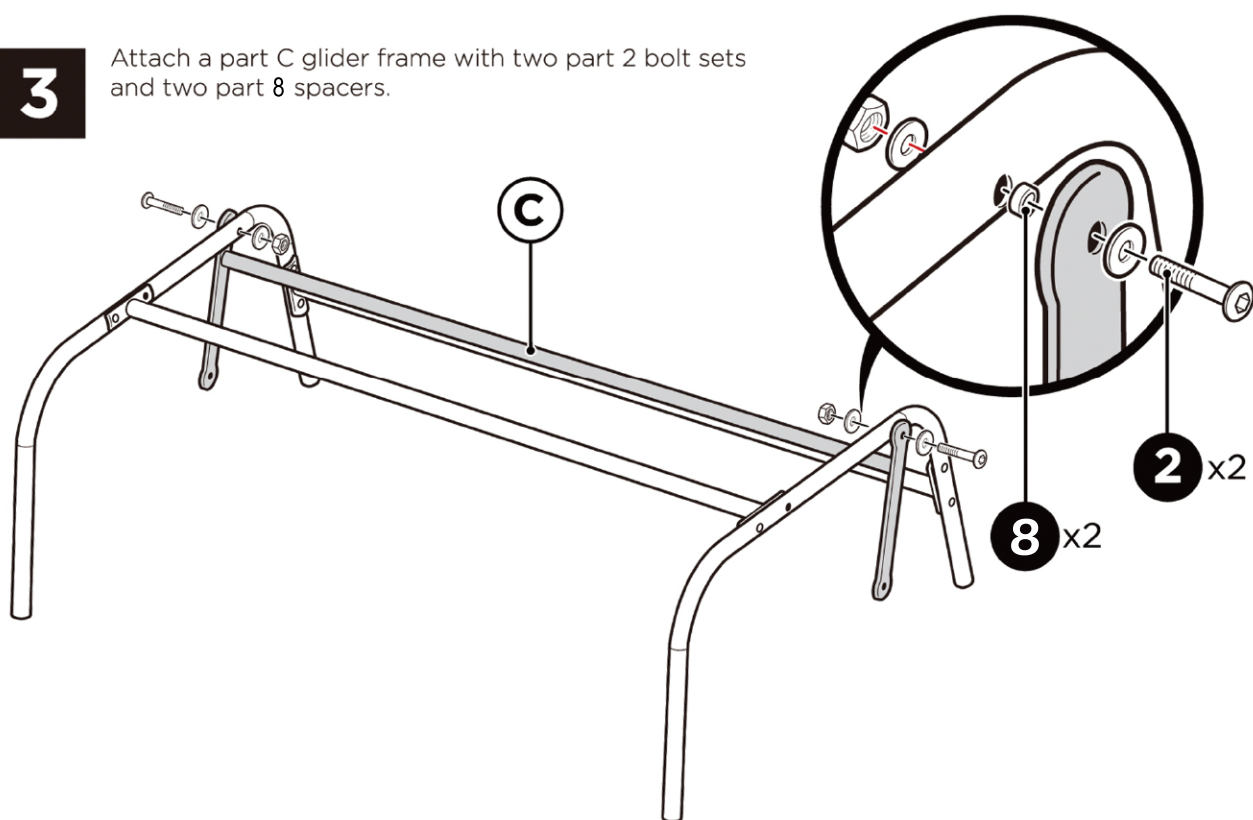
**2**

Attach another part B glider support to the legs with two part 1 bolt sets.



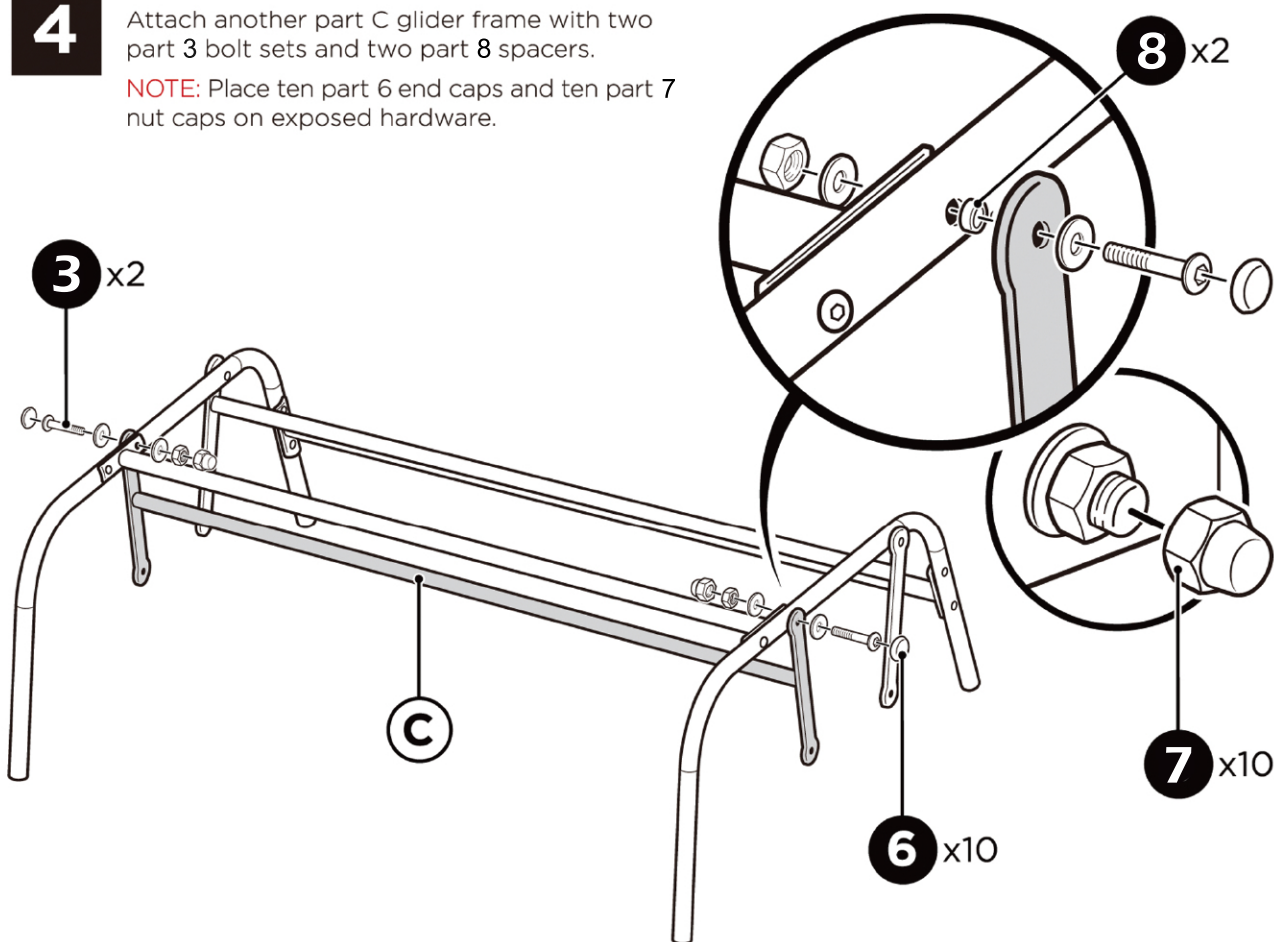
3

Attach a part C glider frame with two part 2 bolt sets and two part 8 spacers.

**4**

Attach another part C glider frame with two part 3 bolt sets and two part 8 spacers.

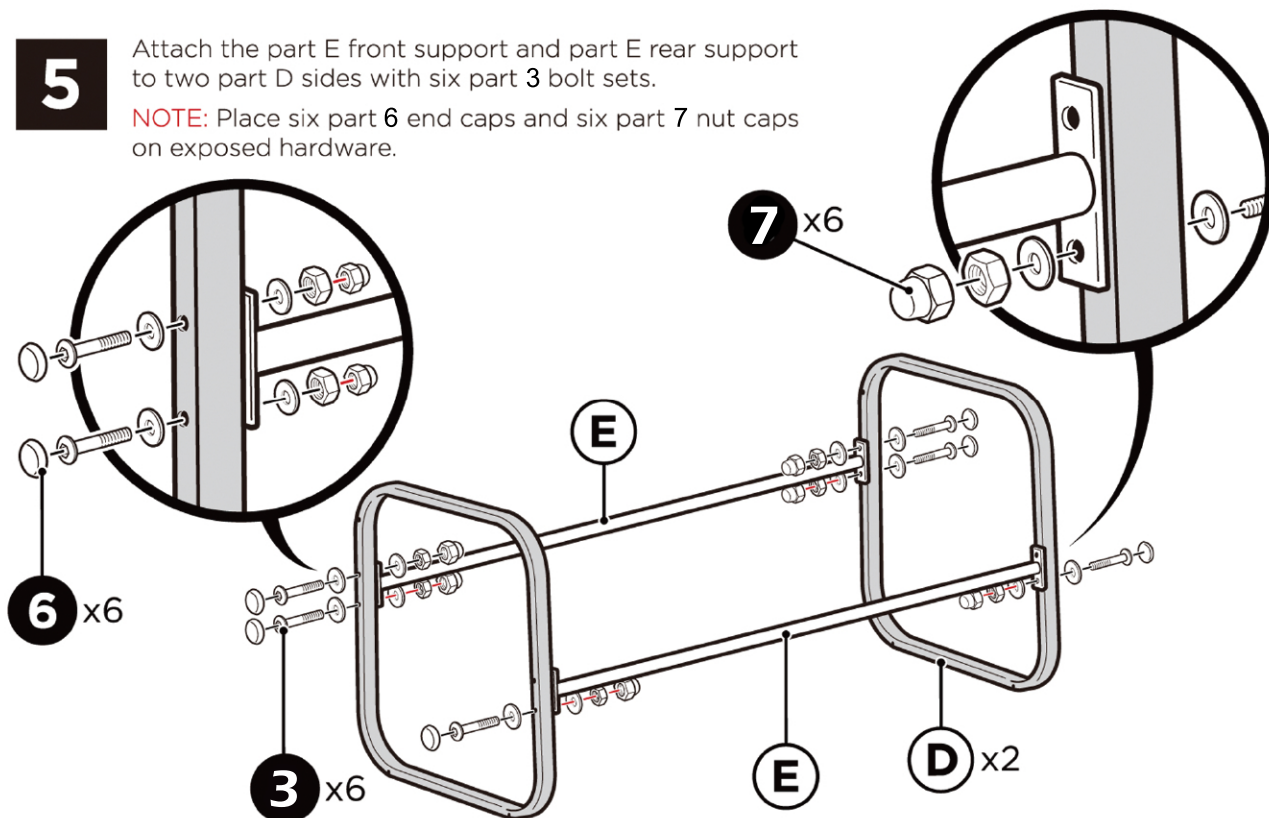
NOTE: Place ten part 6 end caps and ten part 7 nut caps on exposed hardware.



5

Attach the part E front support and part E rear support to two part D sides with six part 3 bolt sets.

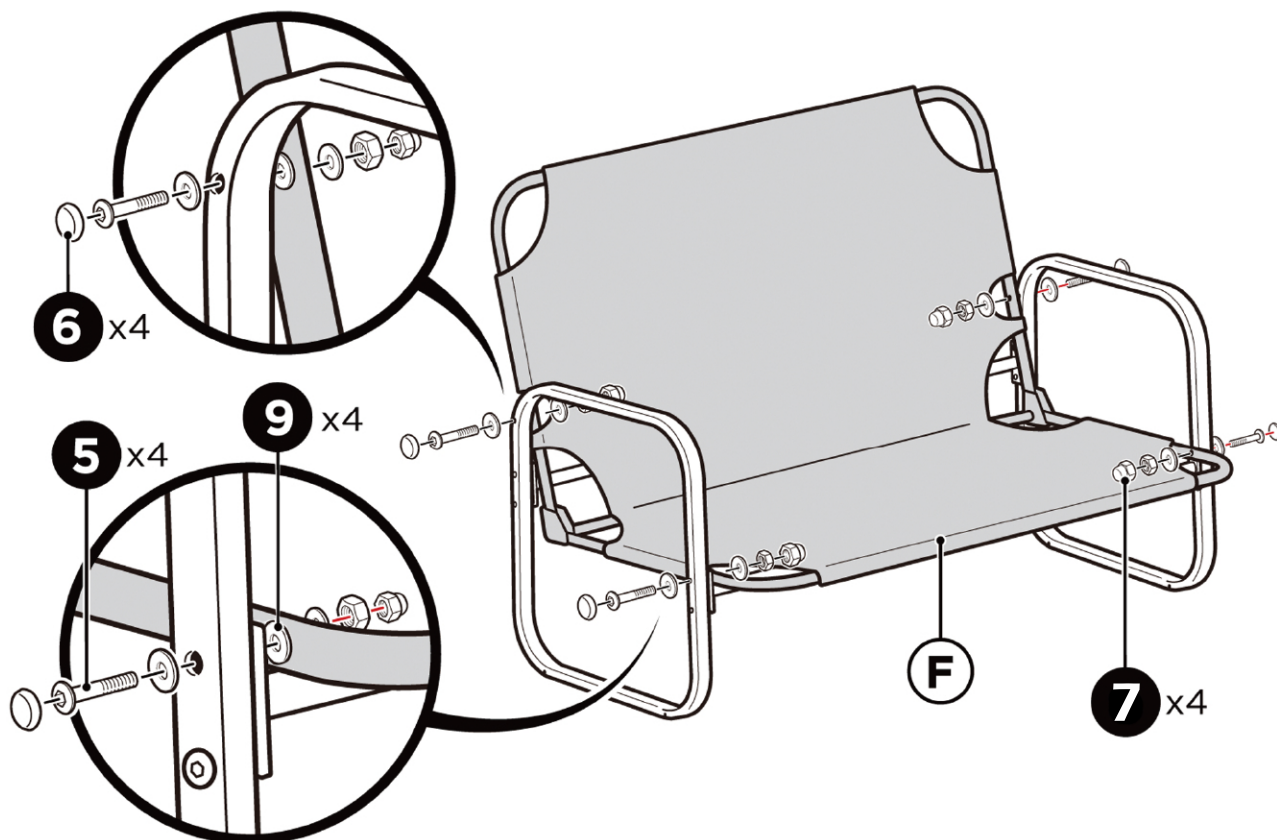
NOTE: Place six part 6 end caps and six part 7 nut caps on exposed hardware.



6

Attach part F seat to the sides with four part 5 bolt sets.

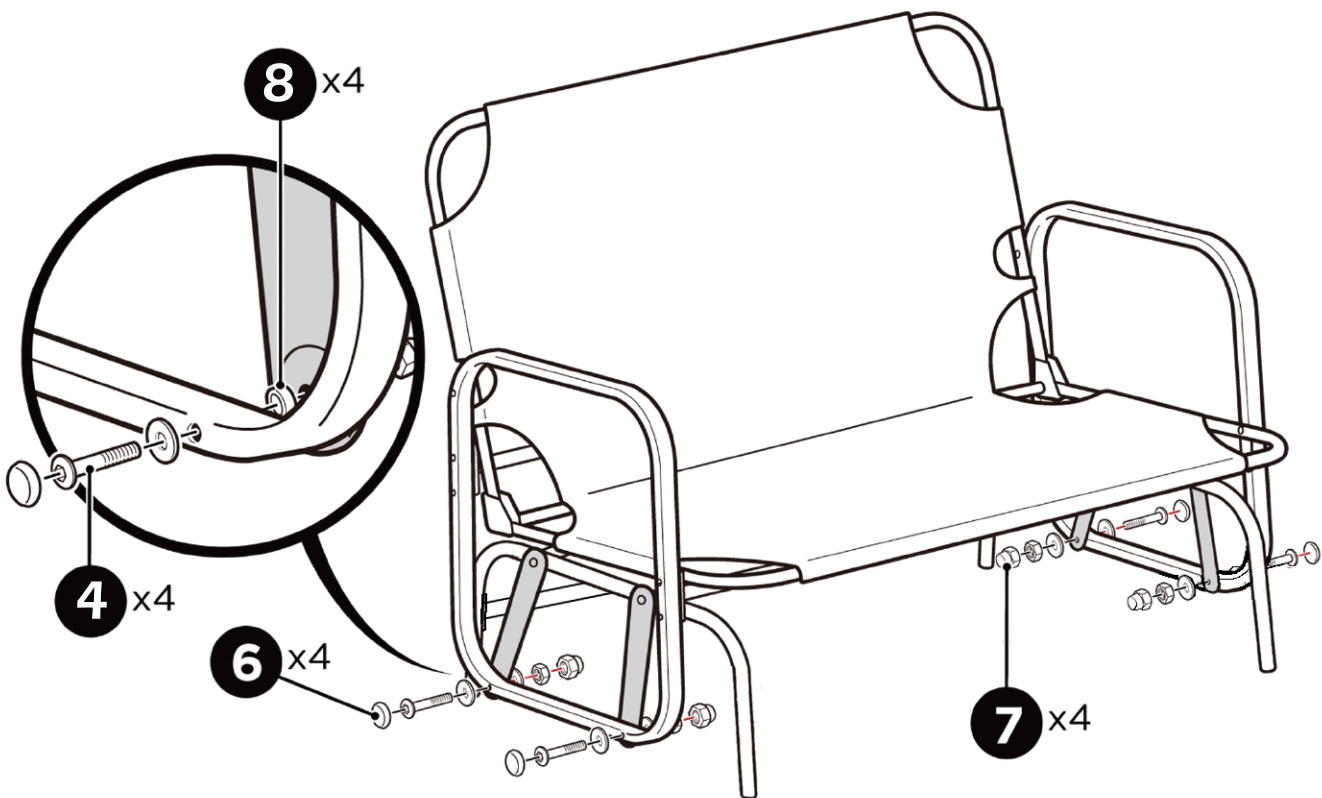
NOTE: Place four part 6 end caps and four part 7 nut caps and four part 9 spacers on exposed hardware.



7

Attach the glider assembly to the seat sides with four part 4 bolt sets and four part 8 spacers.

NOTE: Place four part 6 end caps and four part 7 nut caps on exposed hardware.



8

Place two part G seat cushions and two part H back cushions.

