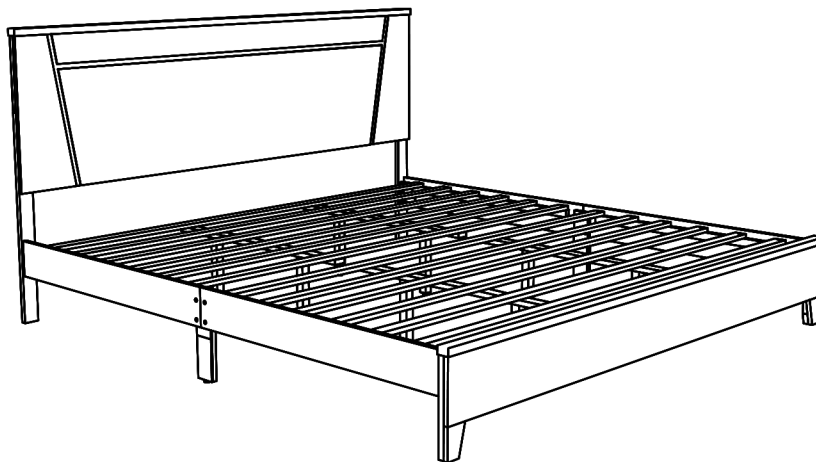


ASSEMBLY INSTRUCTIONS



TOOLS REQUIRED



Allen Wrench

(Included)



Phillips
Screwdriver

(Not Included)



2 - Persons
Recommended

ASSEMBLY RATING



EASY ————— DIFFICULT

The Assembly Rating is a 5-point system showing the level of effort needed to assemble a specific product.



CHECK BEFORE STARTING

☐

Are you missing anything?

Double-check all parts, hardware and accessories listed are all accounted for.

☐

Check out our Quick Tips!

We recommend reviewing the pre-assembly handouts. Even experts need a refresher now and then!

☐

Should we send any replacements?

Are there any irregularities or flaws in the parts? We can send replacements!

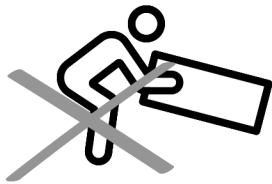
☐

Prep Time!

Please review the assembly instructions and all diagrams prior to assembling.

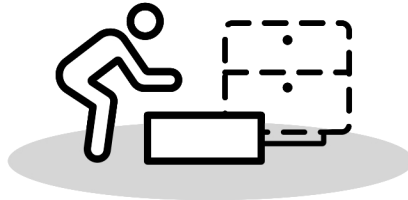
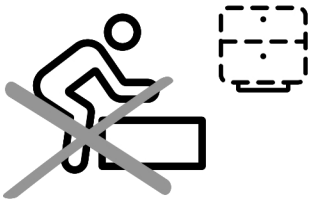
PRE ASSEMBLY INTRODUCTION

We understand building ready-to-assemble furniture can be a challenging experience for some. To help avoid confusion, we have provided some helpful tips that may speed up the process.



Teamwork

ALWAYS have at least two people to help with transporting and assembling the product to avoid potential injury and/or damage.



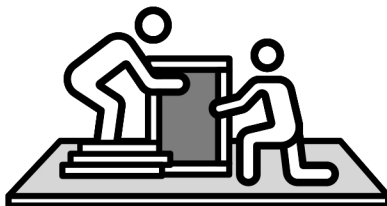
Suitable Location

Assembling near the area of the intended location is highly recommended.



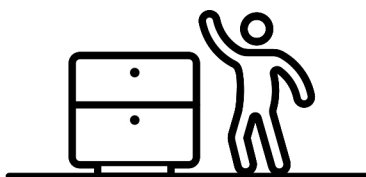
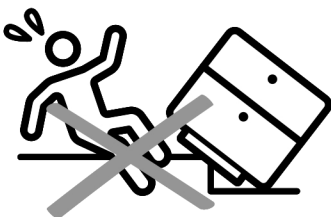
Sufficient Space

Make sure you have enough space to move around during the assembly.



Avoid Scratches

Use cardboard, blankets or a carpeted area while assembling furniture to prevent to prevent scratches and damages.



Flat Surface

Make sure the furniture rests on a flat and level surface with each leg evenly touching the floor.

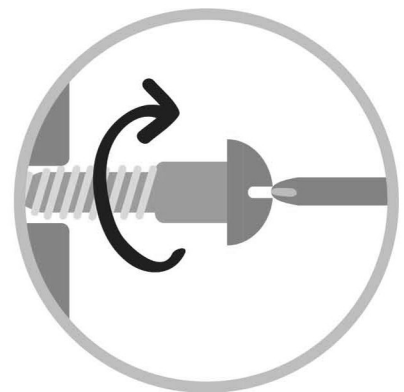
ASSEMBLY AND CARE ADVICE



**FAILURE TO FOLLOW THE GUIDELINES BELOW MAY
RESULT IN INJURY AND/OR PROPERTY DAMAGE.**



Position each part correctly
and insert screws or bolts into
their respective holes.



Turn clockwise to tighten and
only tighten when step is
completed or when instructed
to do so.



Use the appropriate hand tools
or power tools for assembly.
Select steps, such as tightening
screws and/or bolts, may require
hand tools to avoid causing
damage during assembly.



Save the instructions and store
any supplied tools for later
maintenance.

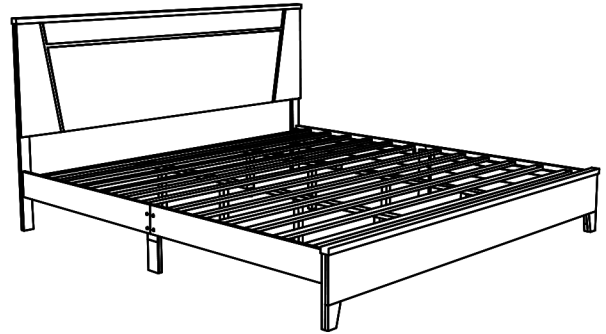
After two weeks, check and
tighten any loose hardware and
repeat again every six months
thereafter.

IT IS THE USER'S RESPONSIBILITY TO MAINTAIN THE FURNITURE. THE HARDWARE MAY LOOSEN OVER TIME AND MAY CAUSE THE FURNITURE TO BE WOBBLY AND UNABLE TO SUPPORT ITS INTENDED WEIGHT CAPACITY. THIS MAY LEAD TO COLLAPSE AND MAY CAUSE SERIOUS INJURY.

EASTERN KING SIZE BED



- Please keep instructions for future reference.
- Check the quantity and irregularity of parts and hardware before you start.



PARTS

#1 1pc



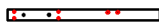
Headboard

#2 1pc



Footboard

#3 2pcs



Headboard
Leg(L&R)

#4 2pcs



Side Rail
Left

#5 2pcs



Side Rail
Right

#6 2pcs



Side Rail
Support
Leg

#7 12pcs



Bed Slat -
1951x45x18mm

#8 8pcs



Bed Slat
Support -
248x30x30mm

#9 4pcs



Bed Center Slat
- 880x45x18mm

HARDWARE

#A 12pcs



Bolt 1/4" x 1-3/16"

#B 8pcs



Bolt 1/4" x 2"

#C x 12pcs



Lock washer

#D x 12pcs



Flat washer

#E 32pcs



CSK M4 x 32mm

#F 1pc



Allen Key
M4 x 65mm

#G 1pc

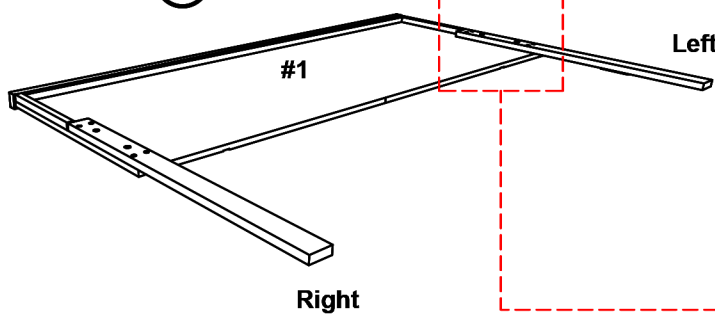


Allen Key
M5 x 65mm

ASSEMBLY INSTRUCTIONS

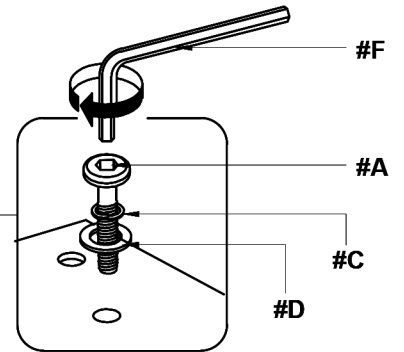
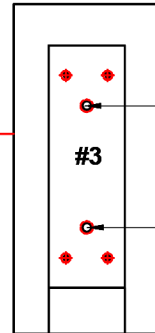
1

- Part #1 x1pc
- Part #3 x2pcs
- Hardware #A x4pcs
- Hardware #C x4pcs
- Hardware #D x4pcs
- Hardware #E x8pcs



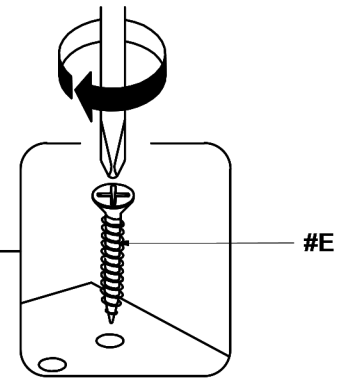
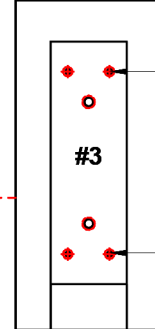
Align headboard legs (#3) to the headboard (#1). Secure using bolts (#A) with washers (#C,D) and screws (#E).

STEP 1.1 :



4x

STEP 1.2 :



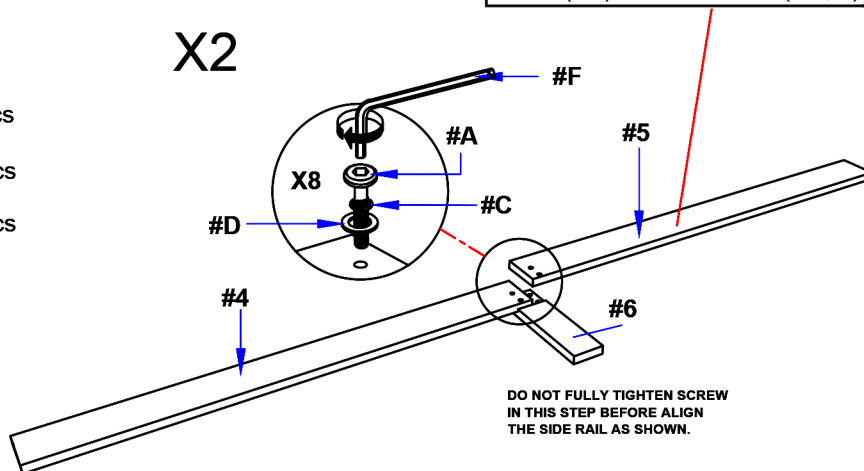
8x

2

- Part #4 x2pcs
- Part #5 x2pcs
- Part #6 x2pcs
- Hardware #A x8pcs
- Hardware #C x8pcs
- Hardware #D x8pcs

X2

Align side rails (#4,5) with side rail support (#6). Secure using bolts (#A) with washers (#C,D).

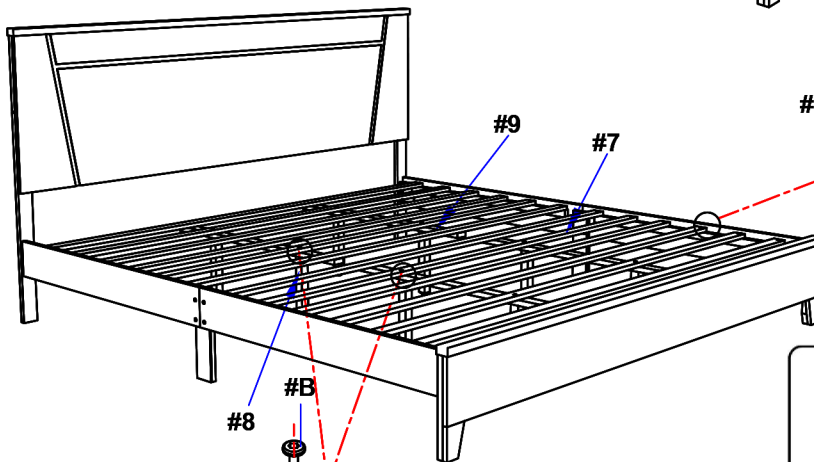
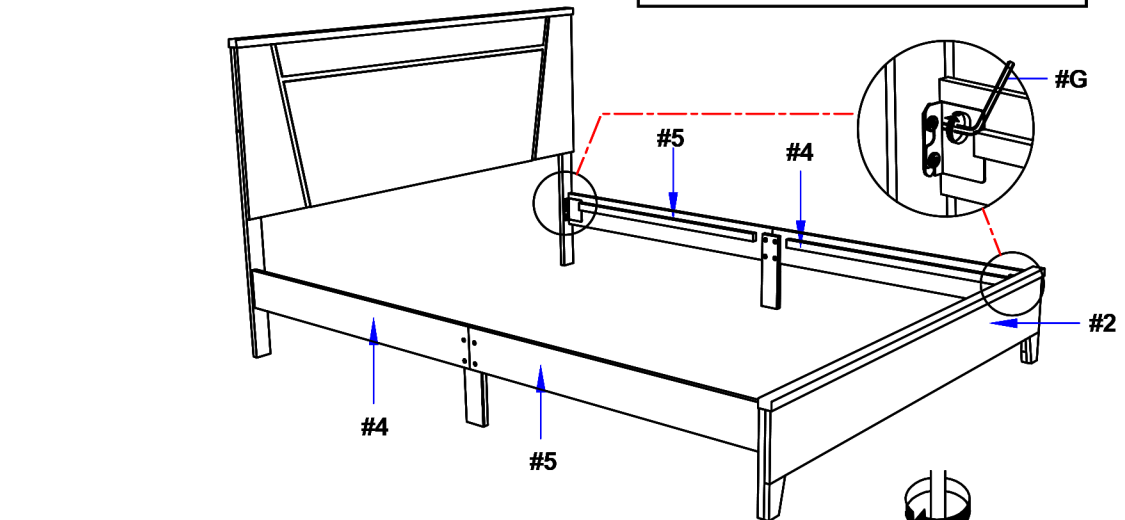


ASSEMBLY INSTRUCTIONS

3

Part #2 x1pc

Align the side rails (#4,5) to the headboard (#1) and footboard (#2). Secure by tightening the bolts.



2. Secure slats (#7) to the side rails (#4,5) by using screws (#E).

4

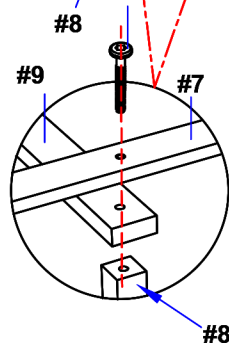
Part #7 x12pcs

Part #8 x8pcs

Part #9 x4pcs

Hardware #B x8pcs

Hardware #E x24pcs



1. Attach the slat support legs (#8) to the center slat (#9) and the bed slats (#7) by using bolts (#B).

ASSEMBLY COMPLETED



Please ensure the furniture rests on an even and flat surface. If the product wobbles or feels loose, double-check all bolts and/or screws are properly tightened and secured.



Keep this handy!

Please retain this instruction manual and any order-related information for future reference.



Lift, don't drag!

To avoid damage to product please always LIFT the product when transporting or adjusting the placement.