

# 42x29.3cm



## **SAFETY INFORMATION**

- Assemble on a soft surface, such as carpeting, to avoid scratching the pole finish or tearing the umbrella fabric.
- Close the umbrella during windy condition. Do not leave the umbrella open in high winds.
- Use a heavy or weighted umbrella base to stabilize the umbrella.

## **CARE AND MAINTENANCE**

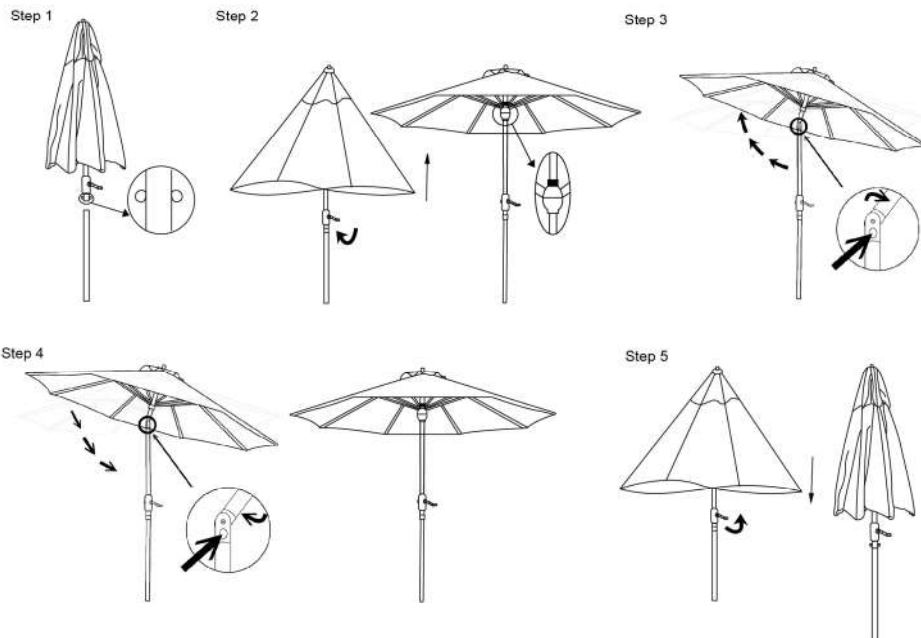
Wash with mild soap and water, rinse with clean water and let air dry.  
Always let the umbrella dry completely before storing.

## **PART LIST**

Part#	Description	Picture	Qty
A	Umbrella		1
B	Lower Pole		1

## **OPERATION INSTRUCTION**

- Step 1: Connect umbrella with bottom pole by locking the metal pins.  
Step 2: Open umbrella by turning the crank to clockwise direction all the way up.  
Step 3: Press the button and tilt the umbrella to the desired position.  
Step 4: Once the umbrella has been tilted, press the button and set the umbrella to a level position.  
Step 5: Crank in counterclockwise direction to close down the umbrella.



 **SAFAVIEH**  
OUTDOOR

Model # PAT8000&8008&8010&8011

Product Dimension: 100.79" Dia. x 98.82" H.

