

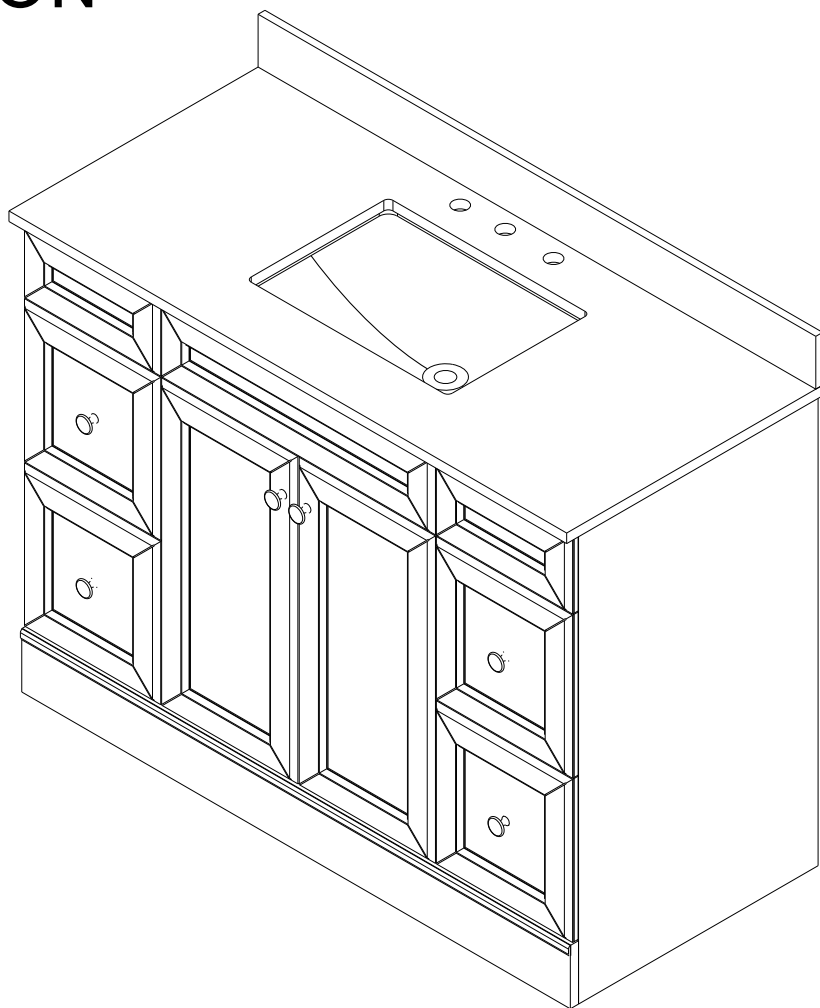
BATHROOM

VANITY

COLLECTION

THREE ONE 48

INSTALLATION MANUAL



Installation Manual

1. Carefully read the instructions before starting the Installation.
2. This vanity should be installed by an experienced Plumber.
3. Drain pipe and drain trap are not supplied. Connect to an existing drain pipe.

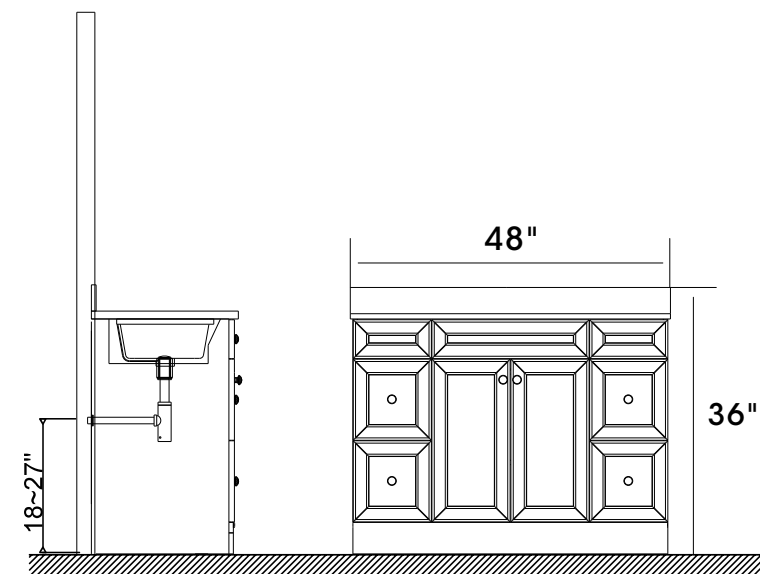
If you are missing any part, please stop and contact us immediately at: service24houroonline@gmail.com

951-433-9027

408-728-6543

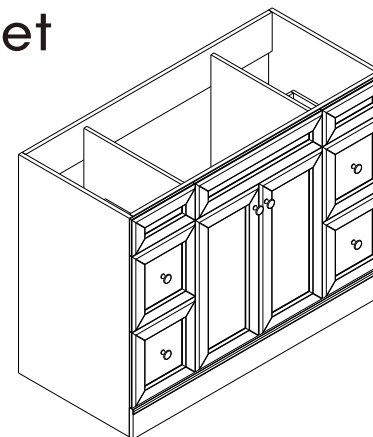
PARTS LIST

Prior to installation, please check the items you have received against the packing list. Report any missing items to your local dealer immediately. Protect all surfaces from sharp objects, high heat sources, direct prolonged sunlight and chemical hazards.

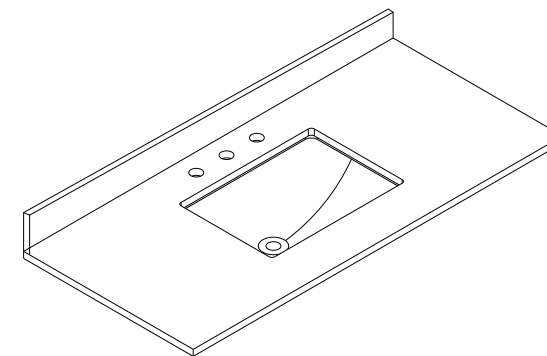


Professional installation is recommended.

Cabinet



Top

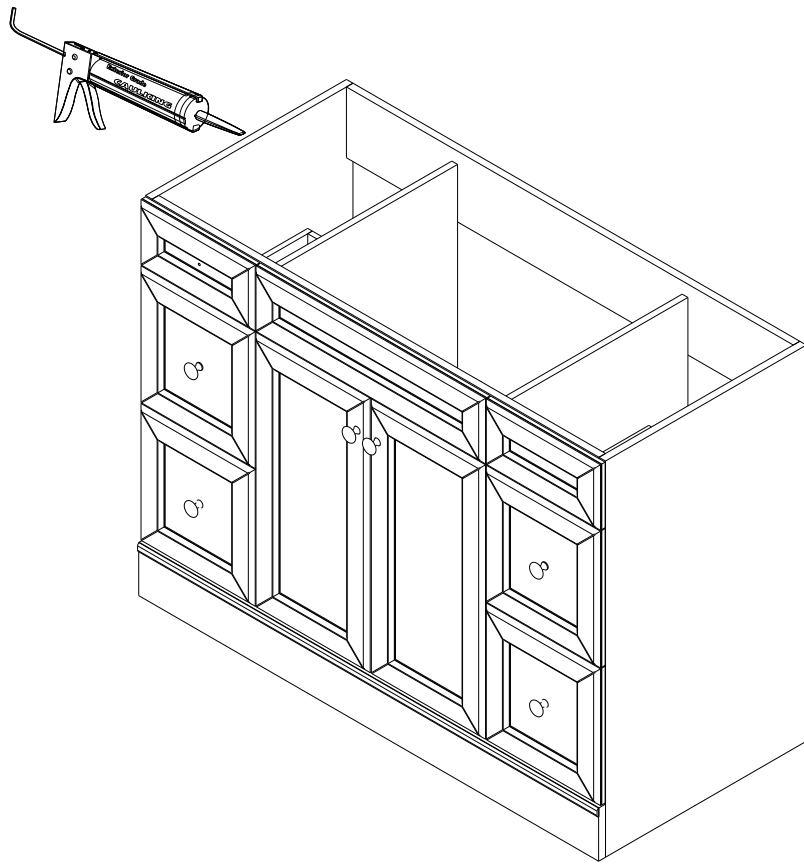


REQUIRED TOOLS

(not supplied)

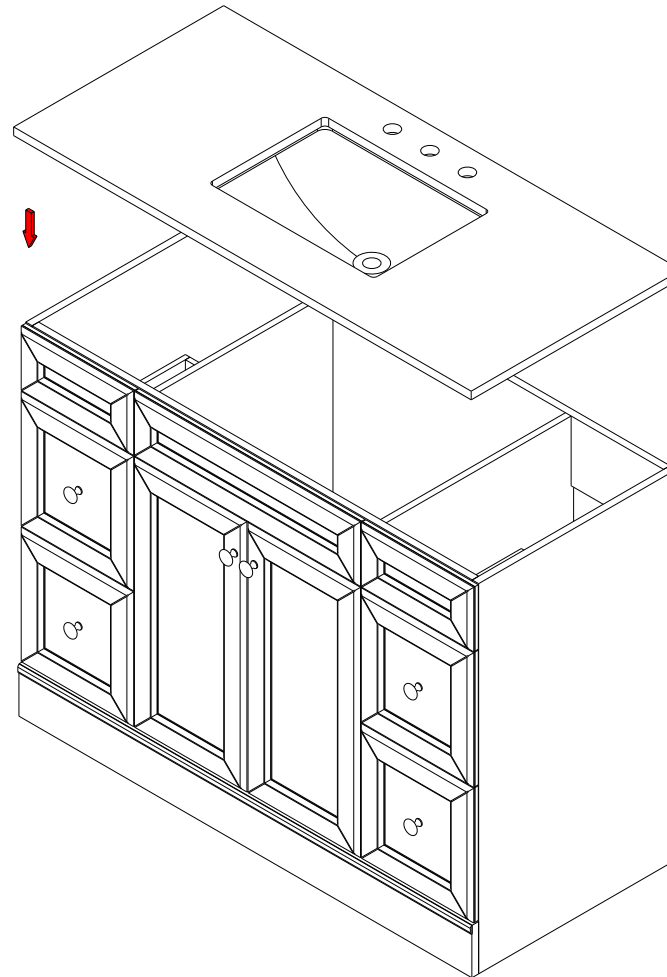


Top installation



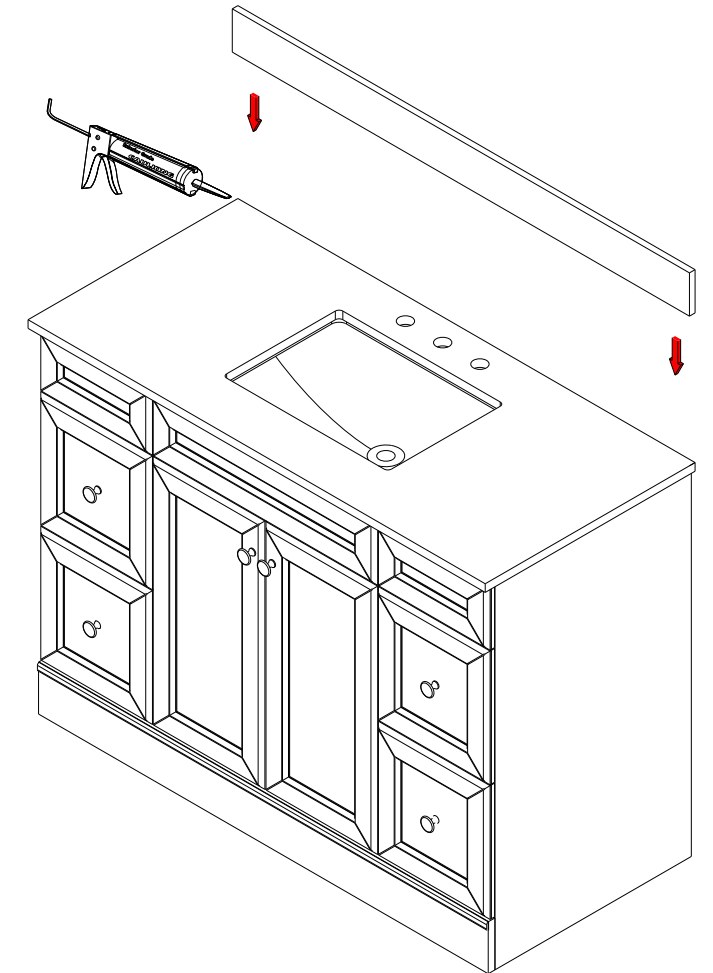
Apply adhesive around the
top edges of the cabinet

STEP 1



Carefully place
the top over the cabinet

STEP 2



Align and center

STEP 3

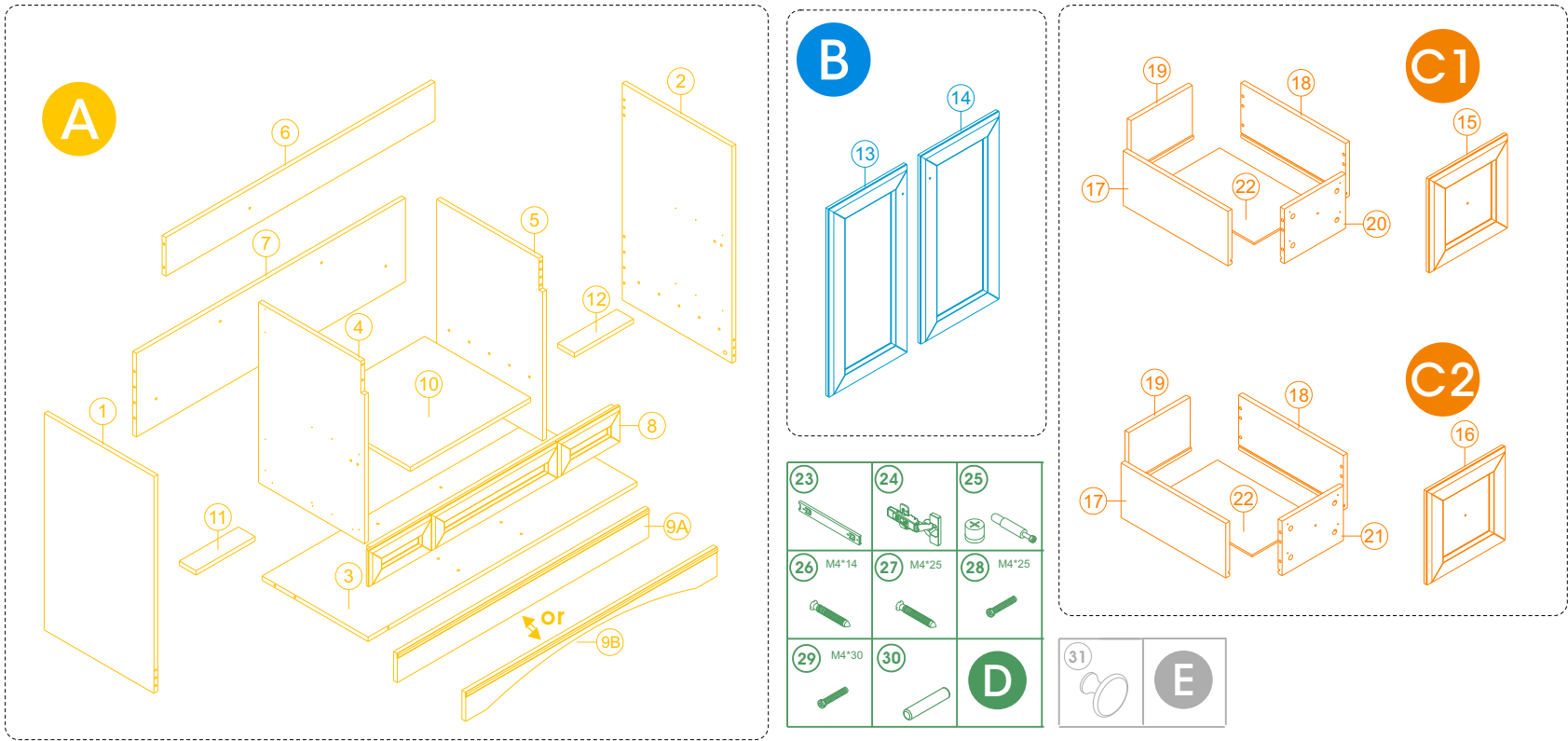
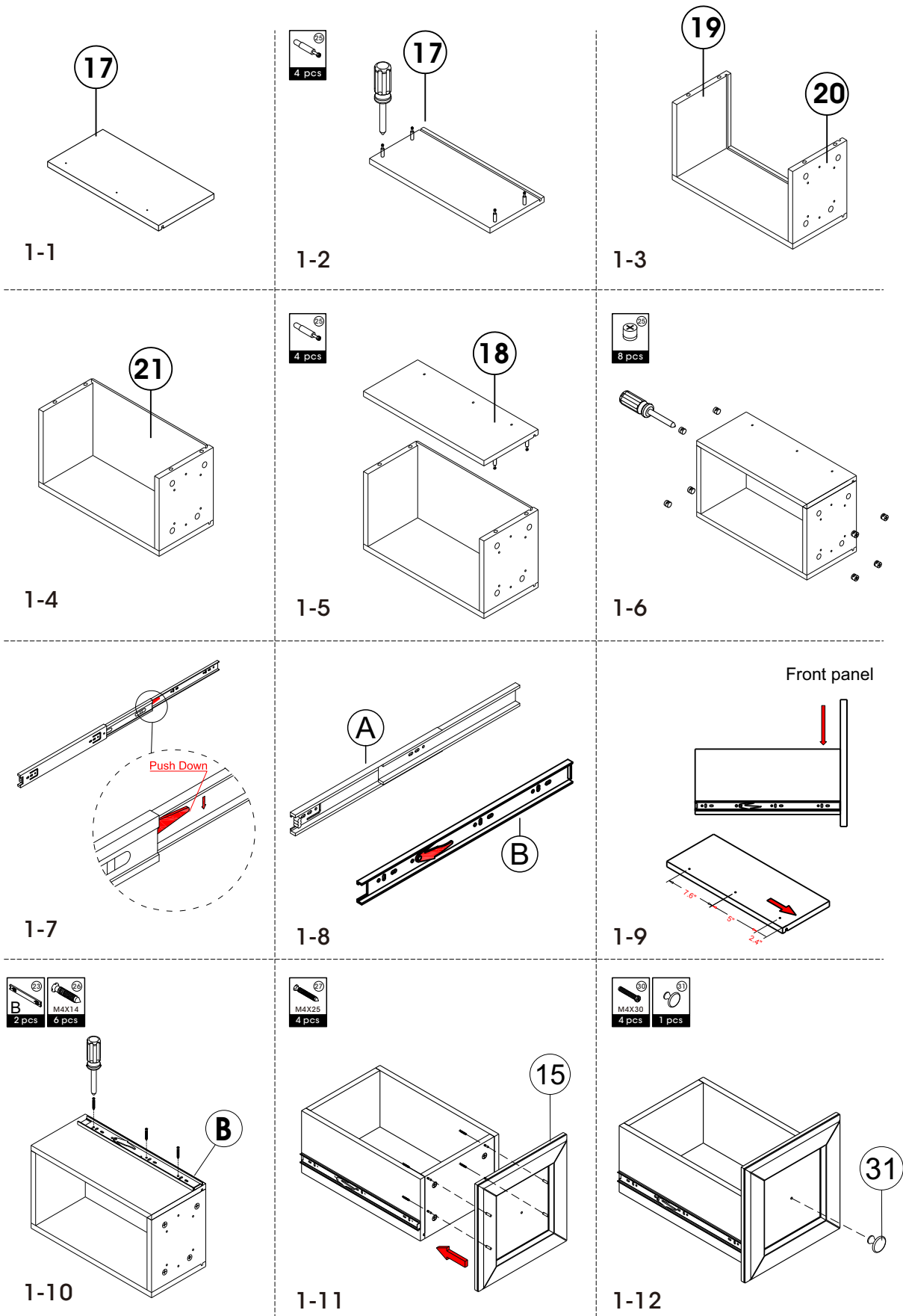
Cabinet



| PART | NO. | Description | Quantity | Size |
|------|------------------|--------------------------------|----------|-------------------|
| A | Cabinet Frame | | | |
| | 1 | Left Side Board | 1 | 35"*21.6"*0.71" |
| | 2 | Right Side Board | 1 | 35"*21.6"*0.71" |
| | 3 | Bottom Board | 1 | 46"*20.2"*0.71" |
| | 4 | Connect Board 1 | 1 | 29.3"*20.2"*0.71" |
| | 5 | Connect Board 2 | 1 | 29.3"*21.6"*0.71" |
| | 6 | Back Board 1 | 1 | 46"*6.3"*0.71" |
| | 7 | Back Board 2 | 1 | 46"*13.4"*0.71" |
| | 8 | False Drawer | 1 | 47.4"*6.3"*1.5" |
| | 9 | Before Board | 2 | 47.4"*4.5"*0.9" |
| | 10 | Fixed Shelf | 1 | 22.9"*20.2"*0.71" |
| | 11 | Connect Board 3 | 1 | 10.8"*3.2"*0.71" |
| B | Door | | | |
| | 13 | Door(left) | 1 | 24.6"*12"*0.82" |
| C | Drawer | | | |
| | 14 | Door(right) | 1 | 24.6"*12"*0.82" |
| | 15 | Drawer Front (left) | 2 | 12"*12.3"*0.82" |
| | 16 | Drawer Front (right) | 2 | 12"*12.3"*0.82" |
| | 17 | Left Side Board For Drawer | 4 | 15.8"*7.1"*0.6" |
| | 18 | Right Side Board For Drawer | 4 | 15.8"*7.1"*0.6" |
| | 19 | Back Board For Drawer | 4 | 8.5"*7.1"*0.6" |
| | 20 | Front Board For Drawer (left) | 2 | 8.5"*7.1"*0.6" |
| | 21 | Front Board For Drawer (right) | 2 | 8.5"*7.1"*0.6" |
| | 22 | Bottom Board For Drawer | 4 | 15"*8.9"*0.2" |
| D | Install Fittings | | | |
| | 23 | Drawer Glides | 8 | 15.7"*2"*0.5" |
| | 24 | Hinge (door) | 4 | 3.9*2.4*1.54" |
| | 25 | Three-in-one Connector | 99 | Ø0.57"*0.46" |
| | 26 | Drawer Glide Screws | 80 | M4*14 |
| | 27 | False Drawer Screws | 16 | M4*25 |
| | 28 | Knob Screws | 2 | M4*25 |
| | 29 | Handle Screws | 4 | M4*30 |
| | 30 | Wood Plug | 40 | Ø0.31"*1.26" |
| | 31 | Knob | 6 | Ø1.15"*1" |

INSTALLATION STEPS

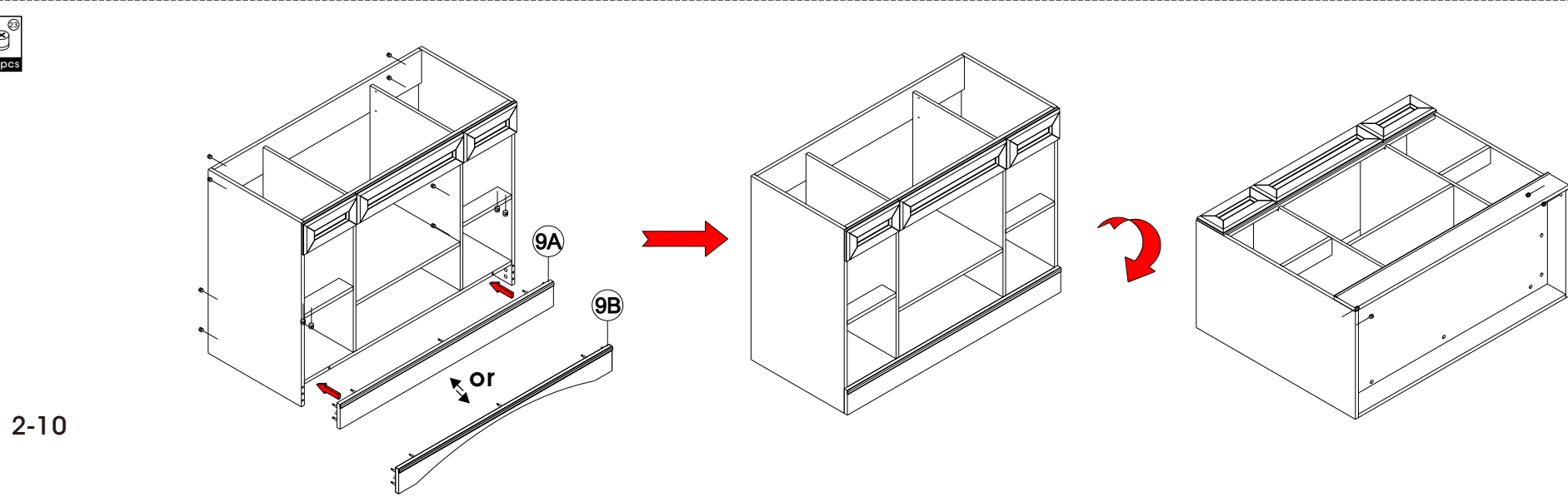
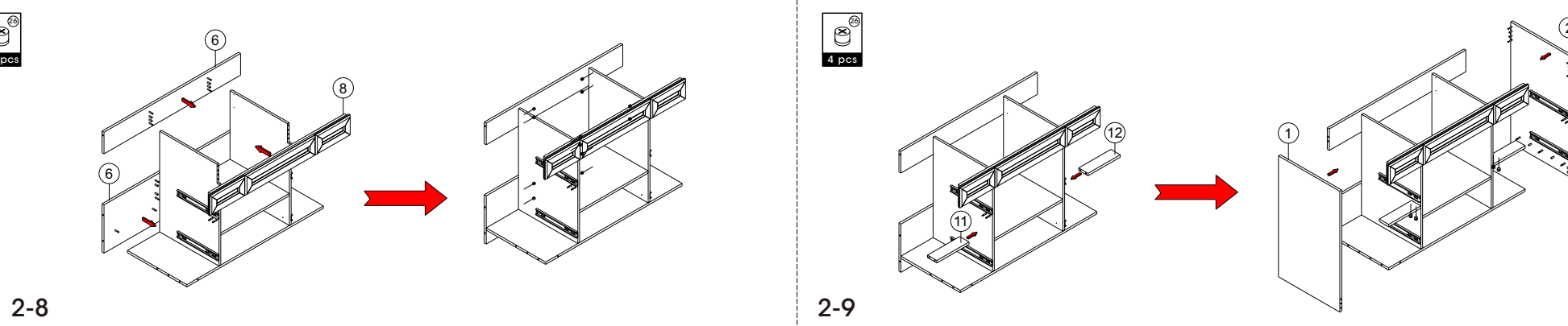
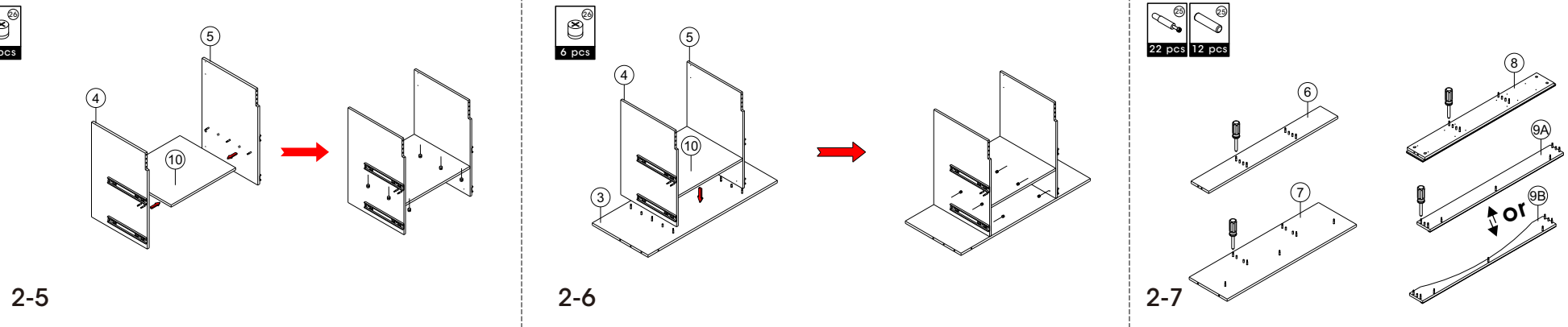
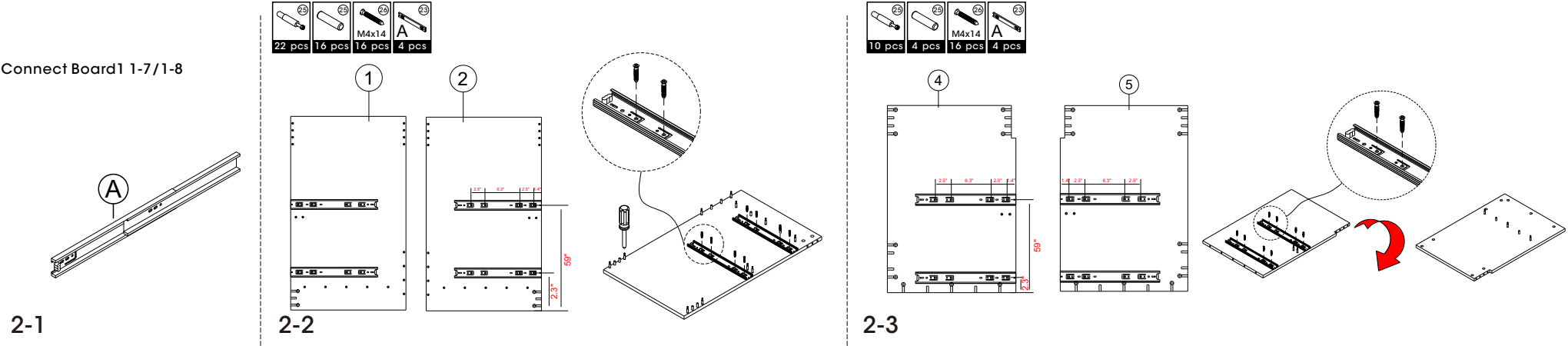
STEP 1 | Drawer



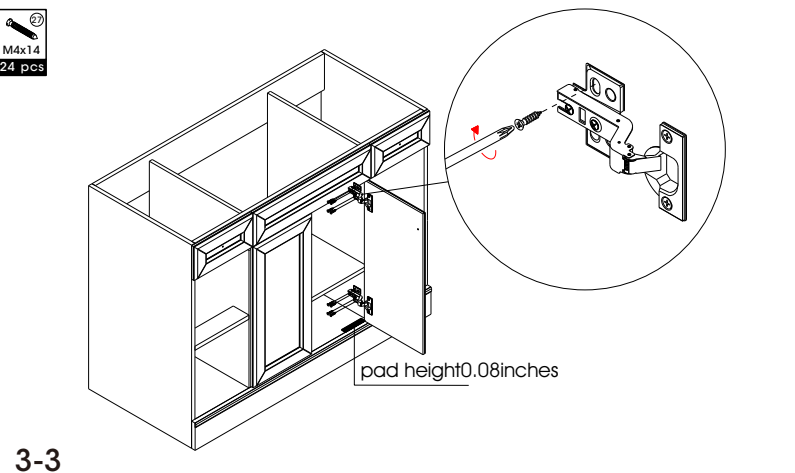
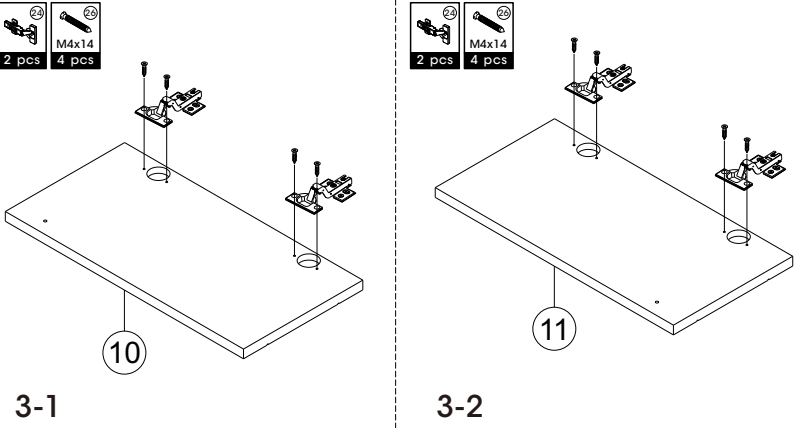
INSTALLATION STEPS

STEP 2 Cabinet frame

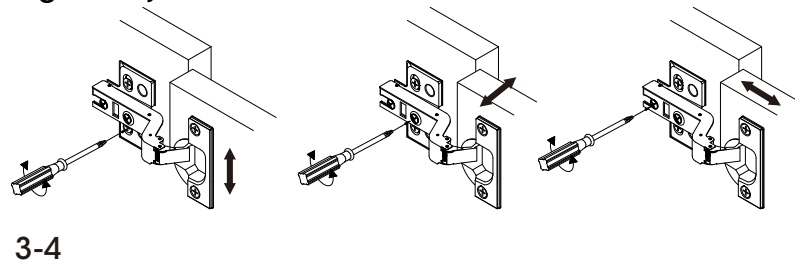
Connect Board 1-7/1-8



STEP 3 Door



Hinges adjustment



STEP 4 Drawer and Finish

