

# Assembly Instructions



## CAUTION

- Inspect the wire insulation for any cuts, abrasions, or exposed copper that may have resulted during shipping. If there is a defect in the wire, do not attempt installation.
- Before starting installation of this fixture or removal of a previous fixture, disconnect the power by turning off the circuit breaker or by removing the fuse at the fuse box.

## TOOLS REQUIRED



Ladder



Safety glasses



Electrical tape



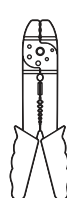
Phillips screwdriver



Flat blade screwdriver

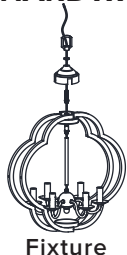


Pliers



Wire strippers

## HARDWARE INCLUDED



Fixture



Lower Cover



Threaded Pipe



Decorative Nut



Iron Ring



Chain



Canopy



Screw Collar Ring



Mounting Unit



Mounting Screws



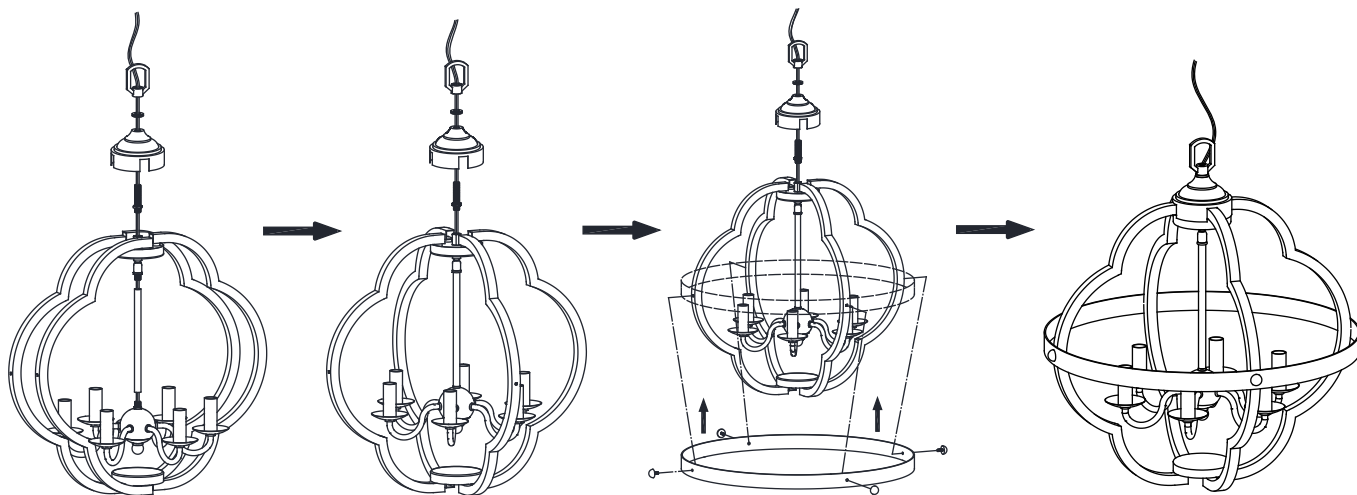
Wire Nuts

\*PARTS SHOWN MAY DIFFER SLIGHTLY PER LIGHT FIXTURE

## INSTALLATION

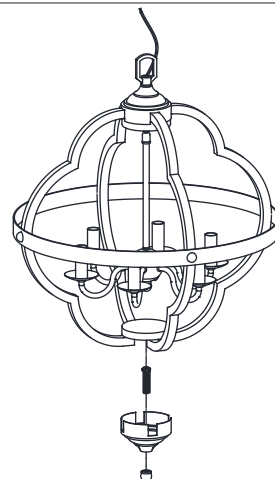
### STEP 1

1. Install the **fixture** as shown. Secure the stem and socket to the **fixture**.
2. Adjust arms to proper position. Use the ball nuts to attach the **iron ring** to the **fixture**.
3. Screw the threaded pipe into the fixture then secure it with hex nut. Place the top cover onto the threaded pipe, then secure with nut.
4. Secure the fixture finial to the **fixture**.



### STEP 2

Screw the **threaded pipe** into the fixture then secure it with hex nut. Place the **lower cover** onto the **threaded pipe**, then secure with **decorative Nut**.

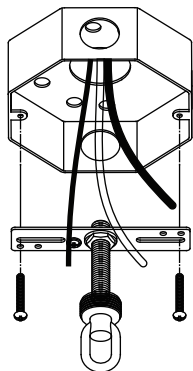


# Assembly Instructions

## INSTALLATION

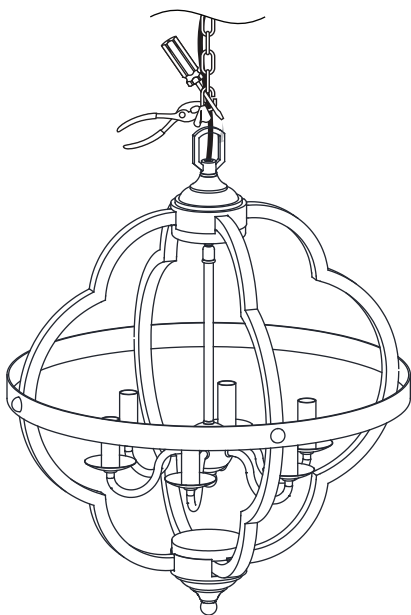
### STEP 3

Use the **mounting screws** to attach the **mounting unit** to the junction box



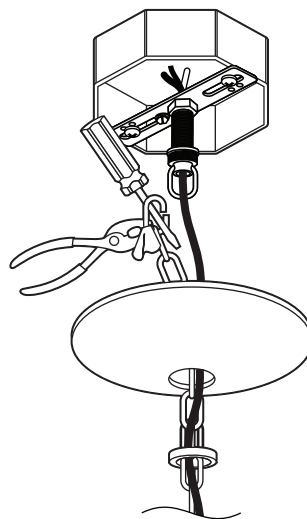
### STEP 4

Attach the end of the **chain** to the **loop on the fixture**.



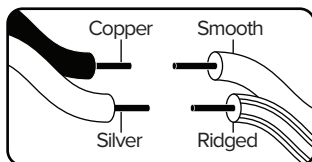
### STEP 5

Pass the **chain** and the branchwires through the **screw collar ring** and **canopy**. Feed the branchwires through the pipe nipple on the **mounting unit** and attach the end of the **chain** to the **mounting unit**.



### STEP 6

Make the electrical connection from the junction box to the **fixture**. Connect the ground wire to the **mounting unit** using the preinstalled green ground screw. Then, connect the positive, negative and ground wires with the supplied **wire nuts**. Secure with electrical tape

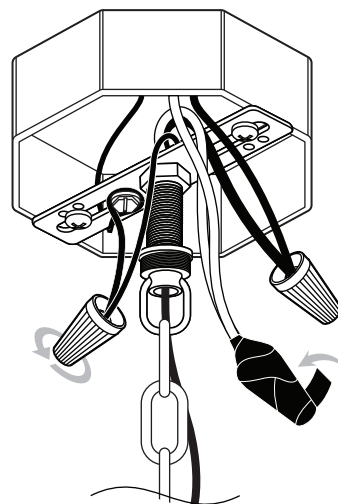


Connect Clear, Brown, Gold or Black Parallel Wire without tracer (round & smooth) or Black Fixture Wire to:

Black or Red Supply Wire or Insulated Wire (other than green) with copper conductor.

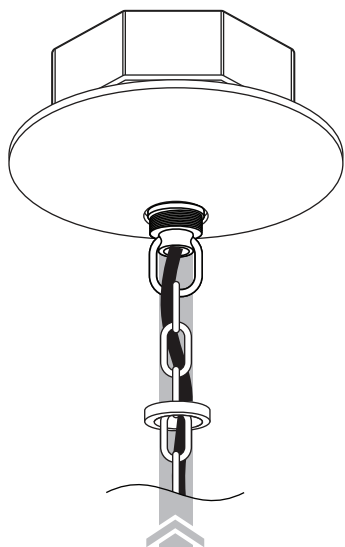
Connect Clear, Brown, Gold or Black \*Parallel Wire with tracer (square & ridged) or White Fixture Wire to:

White Supply Wire or Insulated Wire (other than green) with silver conductor



### STEP 7

Secure the **canopy** to the **mounting unit** with the **screw collar ring**.



### STEP 8

Install bulbs (not included)

