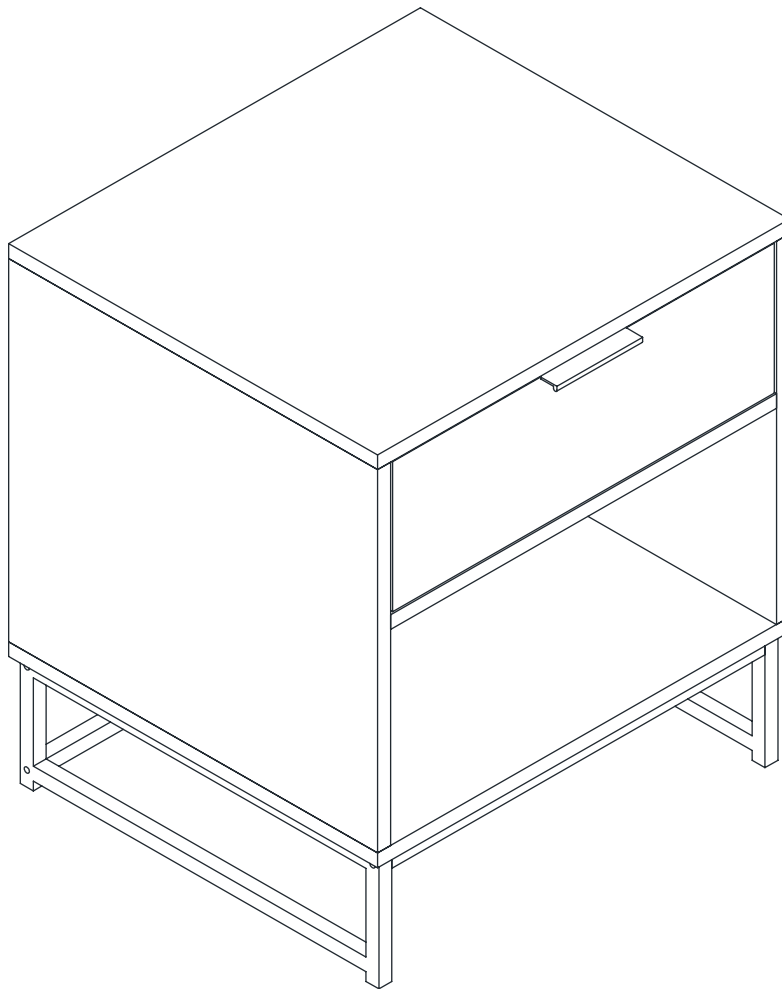


Let's build the

# Kensi End Table

SKU 33801



**Scan me!**

Inspiration  
Digital Instructions  
Free Lifetime Warranty

nathan james

24-0314-VN

# Ok, let's get rolling

This should be easy, just follow our instructions and you will be back to Netflix in no time.

## Estimated time for assembly



30:00

## What you need

- Some of your favourite bubbly or your preferred relaxant
- Use the packaging carton as a working surface to prevent product damage during assembly
- Phillips head screwdriver

## Do not use a drill



## Weight Limitation



90

lbs per shelf

11

lbs drawer

Toll-free at 1-866-619-1004  
Help@nathanjames.com  
Nathanjames.com/help

## What's included

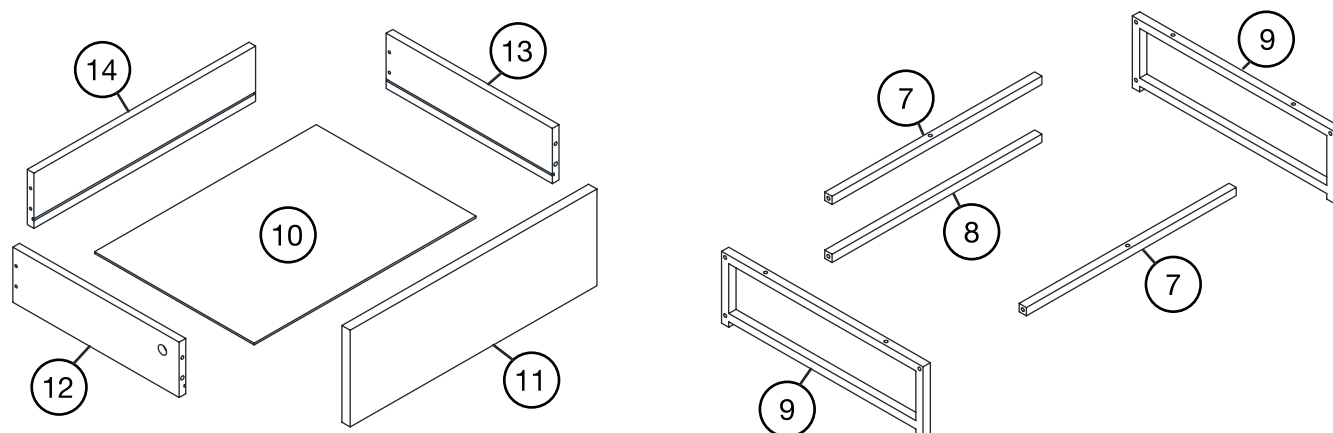
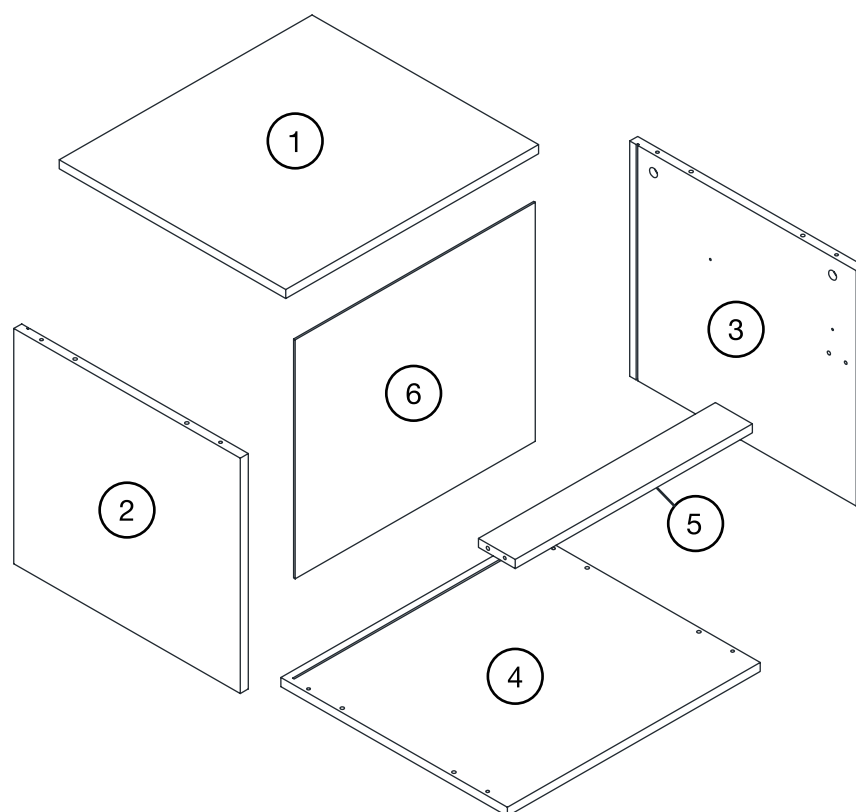
Description		Qty
1	Top Panel	1
2	Left Side Panel	1
3	Right Side Panel	1
4	Bottom Panel	1
5	Center Stretcher	1
6	Back Panel	1
7	Top Metal Stretcher	2
8	Bottom Metal Stretcher	1
9	Side Metal Frame	2
10	Drawer Bottom	1
11	Drawer Front	1
12	Drawer Left Side	1
13	Drawer Right Side	1
14	Drawer Back	1

**Scan me!**

Inspiration  
Digital Instructions  
Free Lifetime Warranty



# The goods

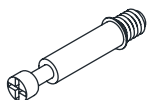


## What's included

Description		Qty
A	M6*35 Cam Bolt	8
B	15 x 9.5 mm Cam Lock	8
C	M6*30 mm Wooden Dowel	12
D	M4*35 mm Screw	8
E	M3*12 mm Screw	14
F	Left Side Panel Slider (CL)	1
F	Right Side Panel Slider (CR)	1
F	Right Side Drawer Slider (DR)	1
F	Left Side Drawer Slider (DL)	1
G	M6*40 mm Bolt	6
H	M6*25 mm Bolt	6
I	Allen Key	1
J	Handle	1

# The goods

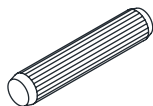
A



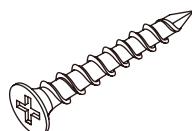
B



C



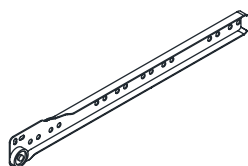
D



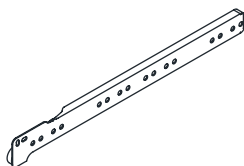
E



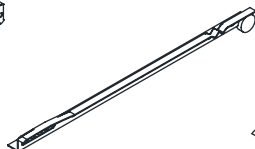
F (CL)



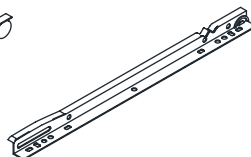
F (CR)



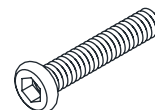
F (DR)



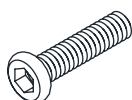
F (DL)



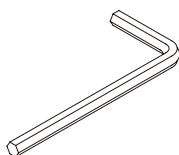
G



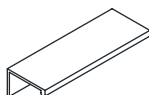
H



I



J



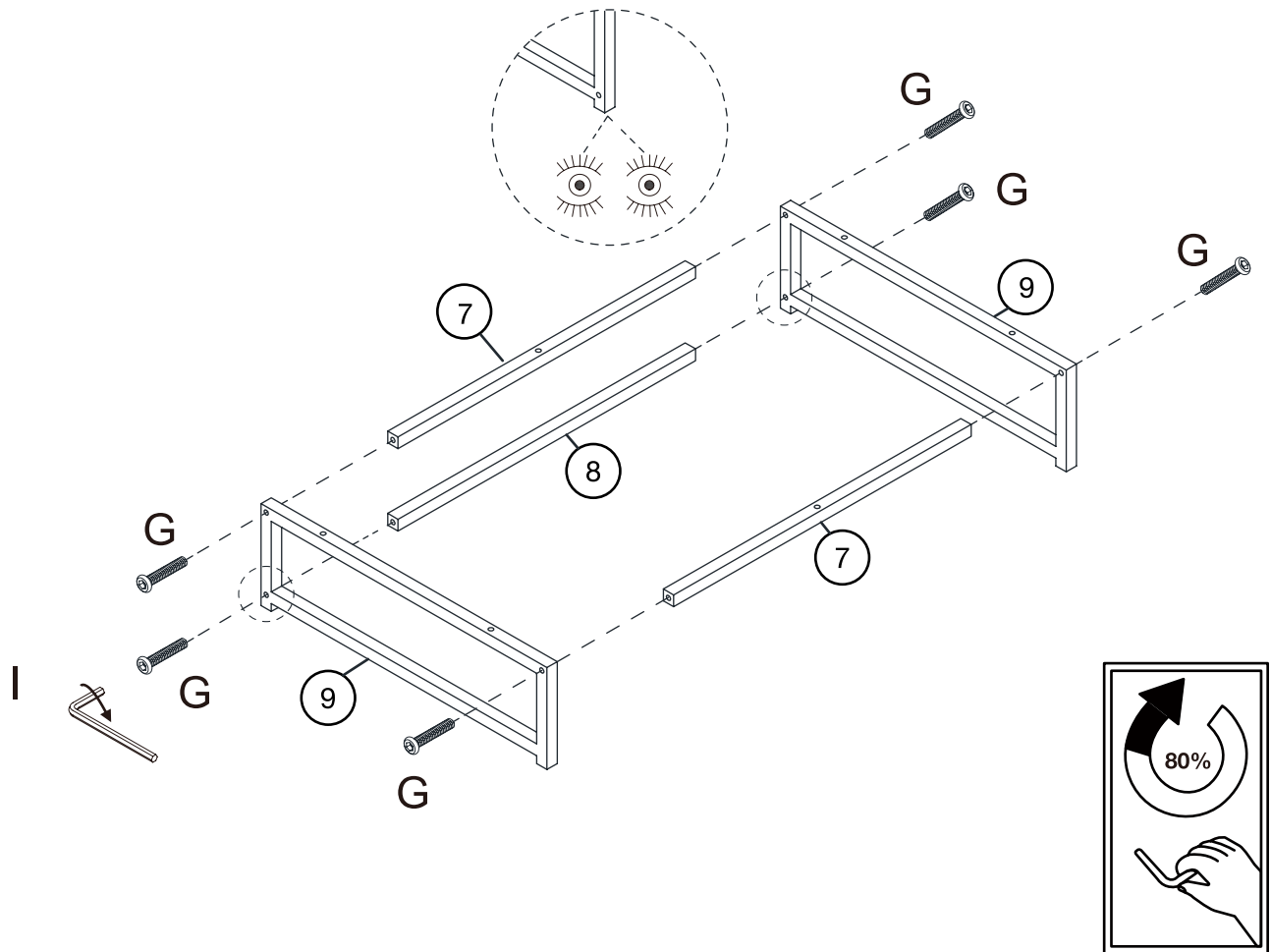
## IMPORTANT

1. Do not tighten bolts / screws completely until all bolts / screws are lined up and inserted into holes.
2. Do not over tighten screws and bolts to avoid stripping.
3. Please use hand tools to assemble this product. Do not use power tools.



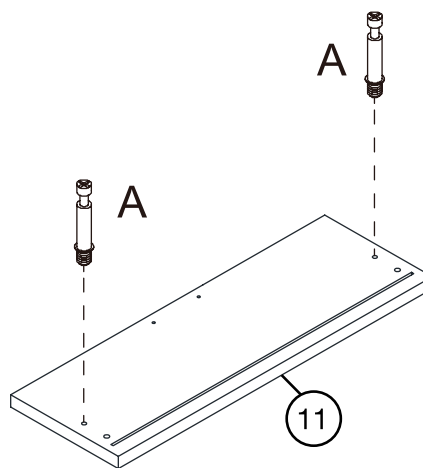
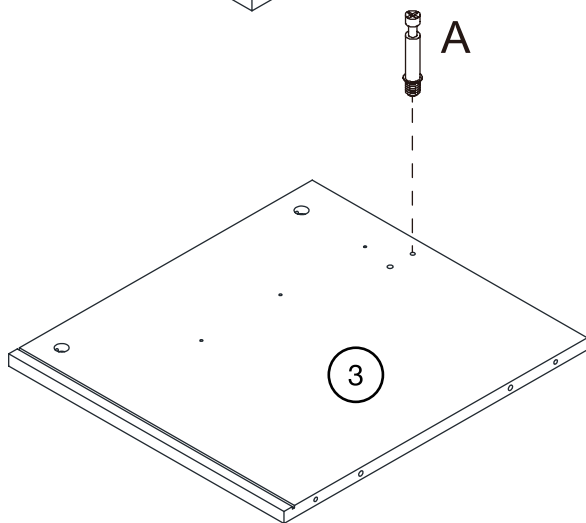
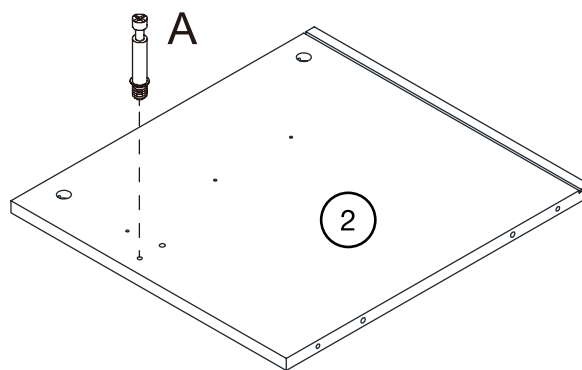
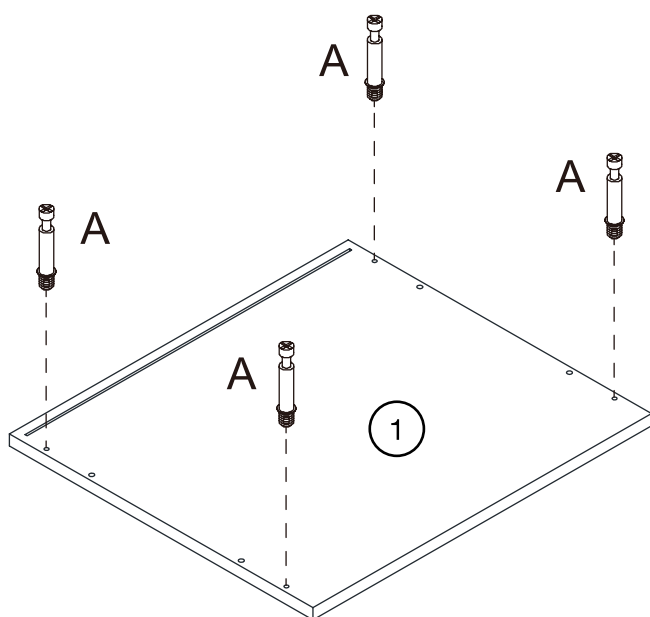
# Step 1

Alright, let's get this thing fired up!  
First thing's first. Attach the Top (7)  
and Bottom (8) Metal Stretchers  
to the Side Metal Frames (9) using  
the M6\*40 mm Bolts (G). Don't  
forget to make sure the feet are  
pointing down! Use the Allen Key  
(I) to tighten the screws to 80%.



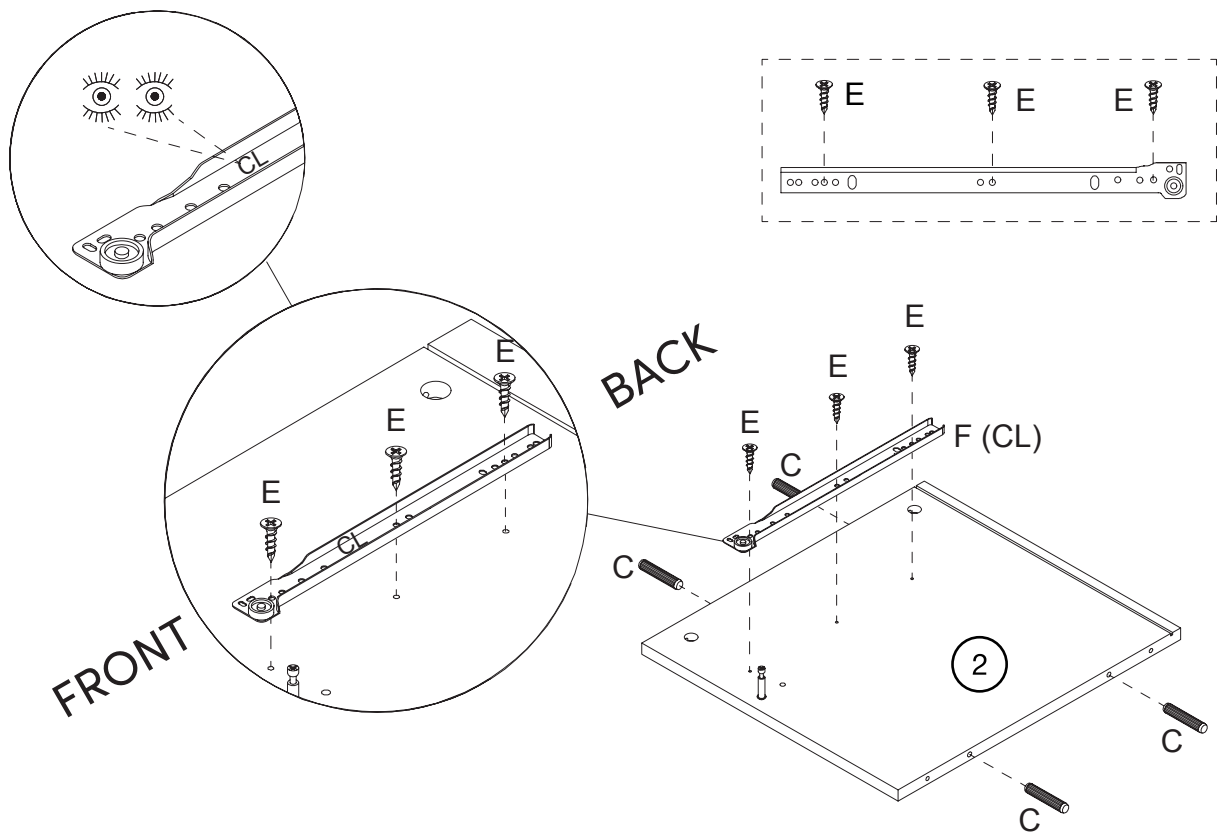
# Step 2

What time is it? That's right, it's Cam Bolt time!  
Screw the Cam Bolts (A) into the Top Panel (1),  
Left Side Panel (2), Right Side Panel (3), and  
Drawer Front (11).



# Step 3

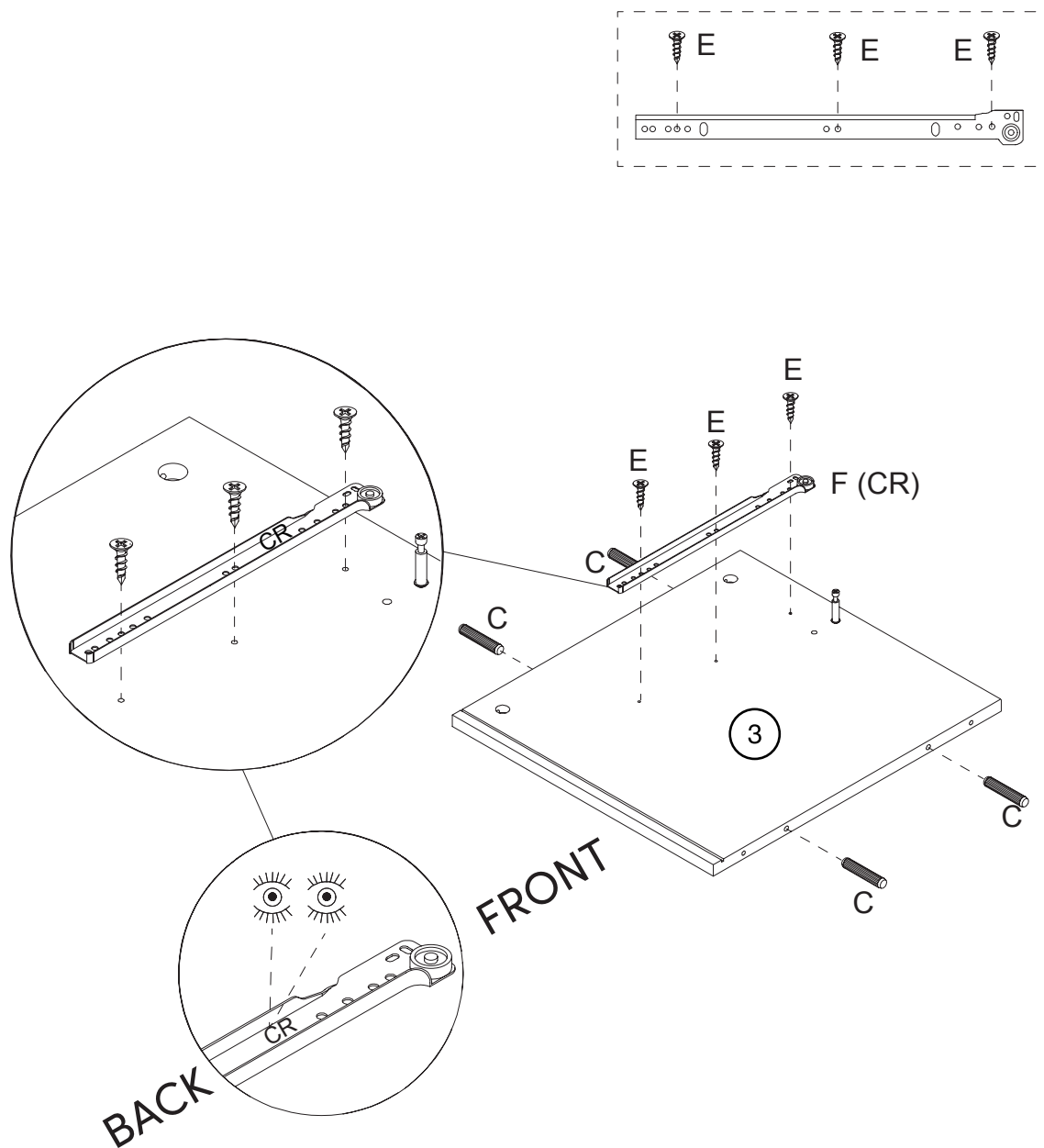
Now it's time to attach the Left Side Panel Slider (CL) (F) to the Left Side Panel (2) using the M3\*12 mm Screws (E). Insert the Wooden Dowels (C) into the sides of the panel.





# Step 3 Cont.

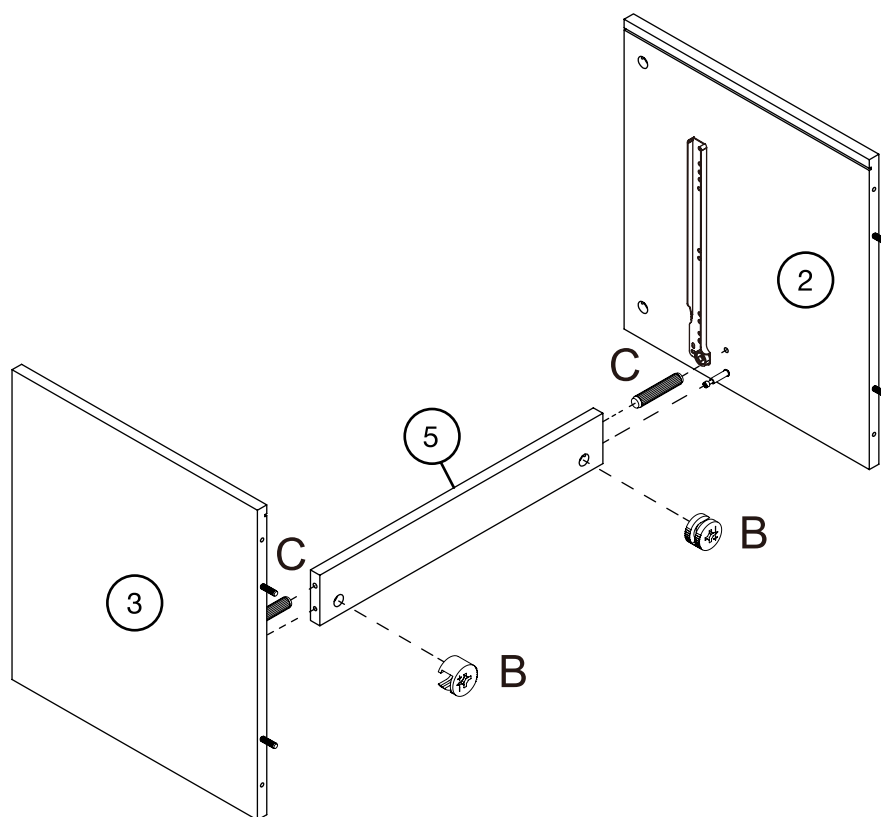
Repeat that process with the  
Right Side Panel Slider (CR)  
(F) and Right Side Panel (3).



## Step 4

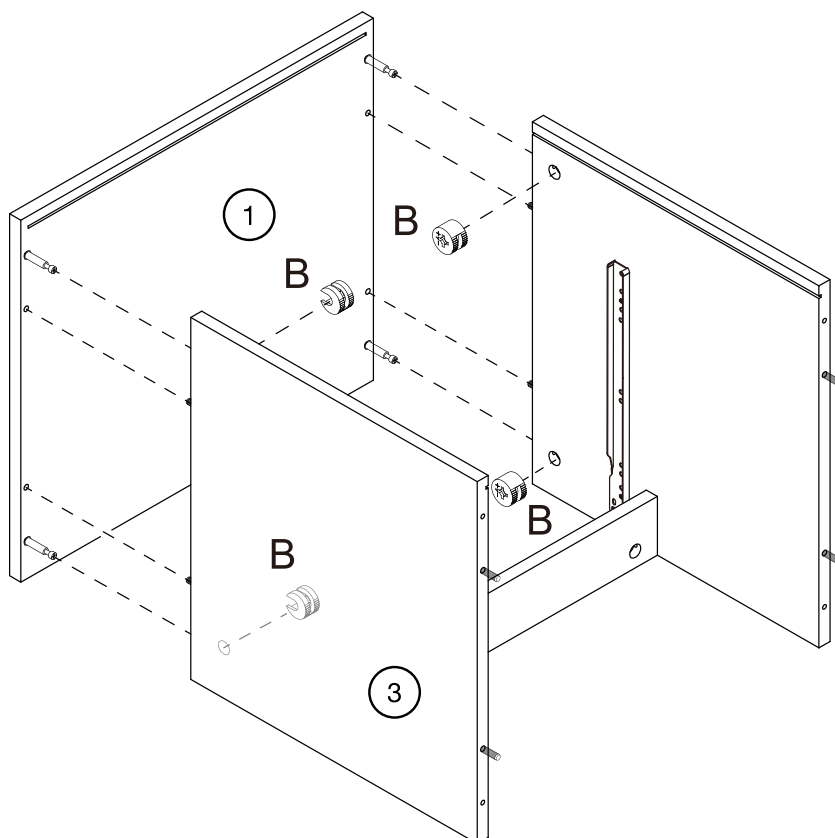
Now let's attach the Center Stretcher (5) to the side panels (2) (3) using the Wooden Dowels (C). While you're here, insert the Cam Locks (B) into the Center Stretcher (5).

**See following page for Cam Lock Assembly Quick Guide.**



## Step 5

Time to lock it all up! Align the Top Panel (1) to the Side Panels (2) (3) and attach together using the Cam Bolts and Wooden Dowels you already attached. Insert Cam Locks (B) into the Side Panels.



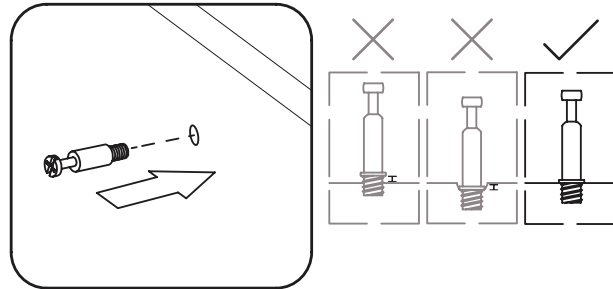
# How to use cam locks

Did you know?

Cam locks are used to join two panels together, usually the edge of one to the flat side of another.

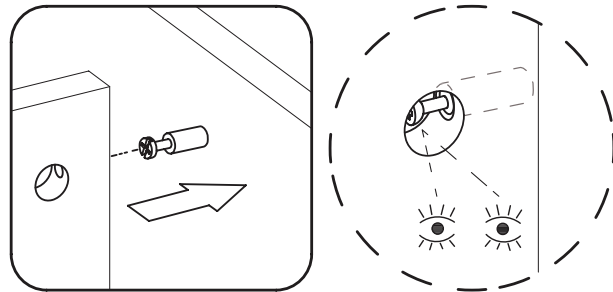
First, your cam bolt (or cam pin) will need to be properly inserted into the flat side of the board.

Important Note: Only tighten the cam bolt until it is secure. Do not over-tighten.



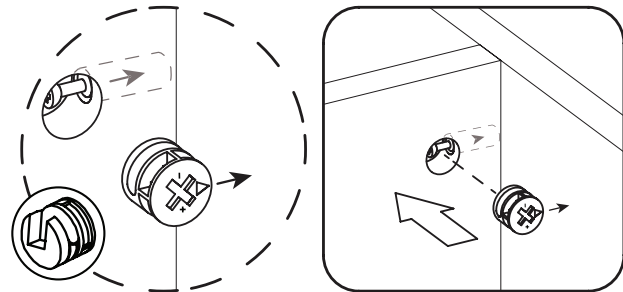
Next, you will fit the proper hole on the edge of the associated joining panel over the cam bolt.

Important Note: When installed properly, the head of the cam bolt will be visible through the larger hole on the side of the joining panel.



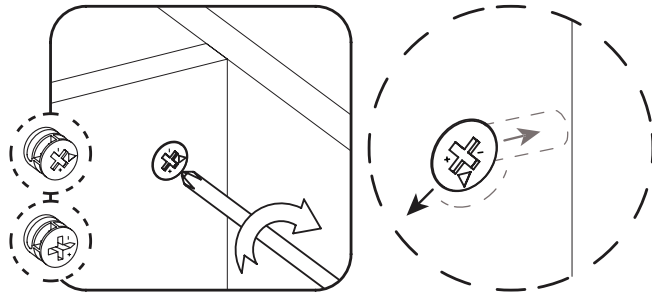
Next, you will notice the cam lock has a “C” shaped back. Commonly, an arrow on the front of the cam lock points in the same direction as the open section on back.

Using these as your cue, insert the cam lock into the large hole so the opening of the “C” fits over the head of the cam bolt.



Using a screwdriver, you will turn the cam lock until it stops, usually between 130° or 180°. You will feel the panels pulling closer until they are secured.

Important Note: Only turn the cam lock until the panels are fully engaged & feel secure. Turning too far may lead to hardware failure.



## Still having issues?

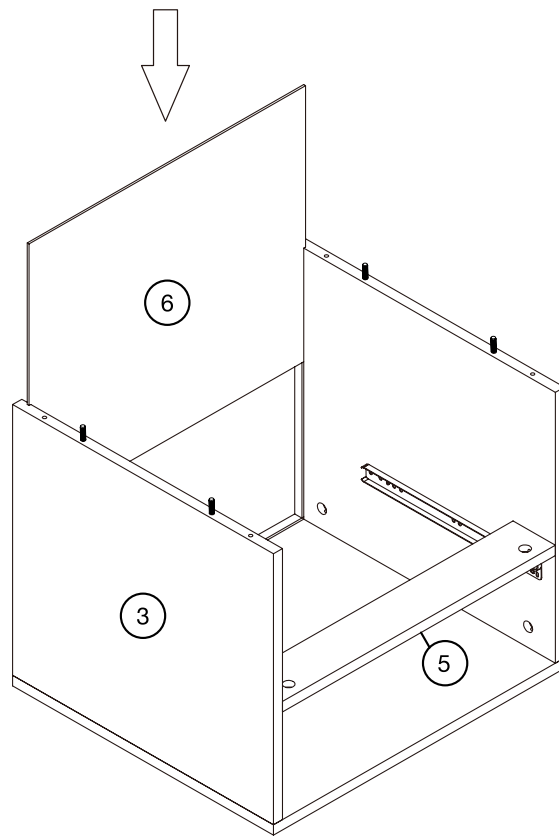
If a cam lock seems to be spinning in place or is not “catching” or pulling the panels together as expected, first remove the cam lock & try again while making sure that everything is properly positioned & oriented.

If you are still having issues getting things working as expected, first remove the cam lock then unscrew the cam bolt slightly (less than 1 complete turn) to see if that helps with the alignment of the cam lock & bolt.



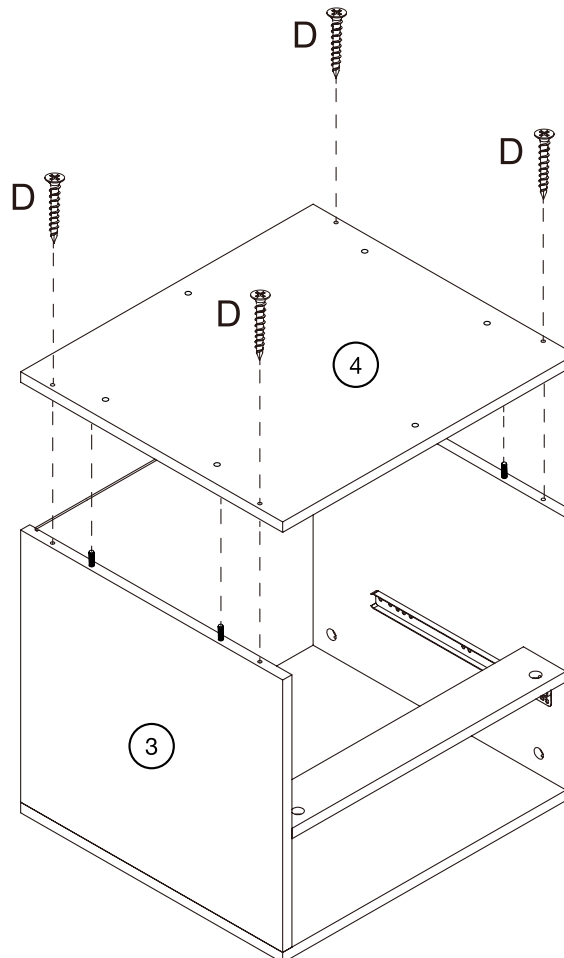
## Step 6

Slide the Back Panel (6) into the groove in the Side and Top Panels (1) (2) (3).  
Groovy! (Sorry, that was a terrible joke).



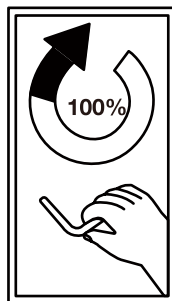
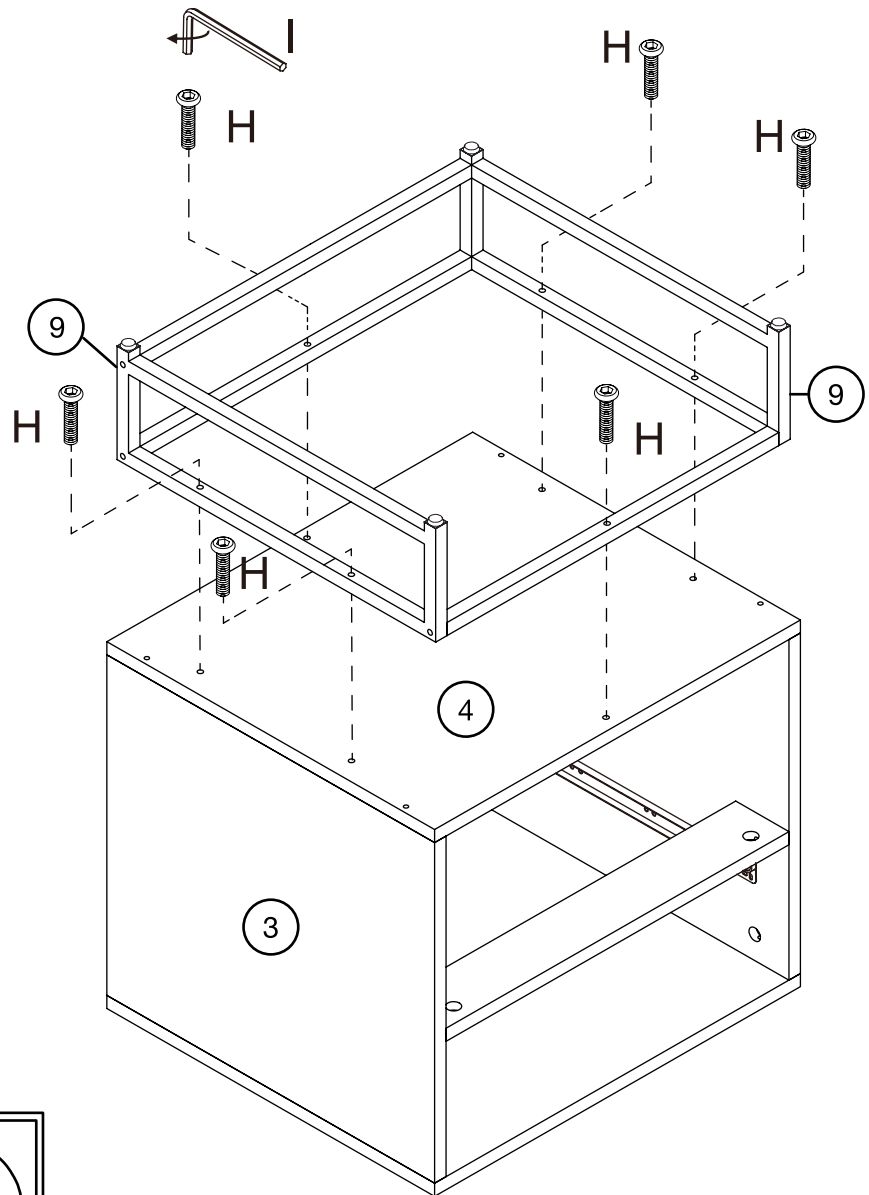
## Step 7

You're almost done!  
We smell pizza in your future...but first, attach the Bottom Panel (4) to the Side and Back Panels using M4\*35 mm Screws (D).



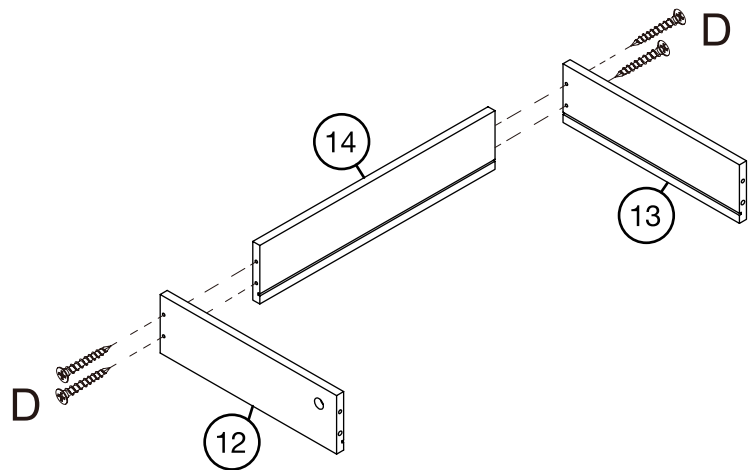
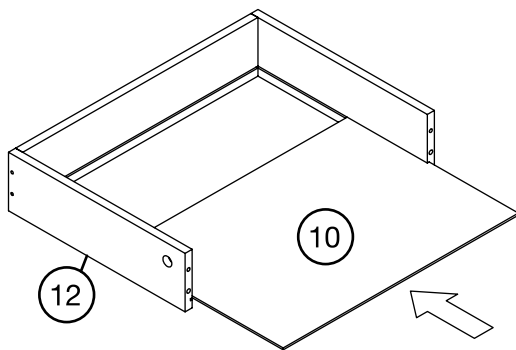
# Step 8

Remember that frame we put together in step 1? Well, grab that and attach it to the Bottom Panel (4) using M6\*25 mm Bolts (H). Use the Allen Key (I) to tighten all bolts to 100%.



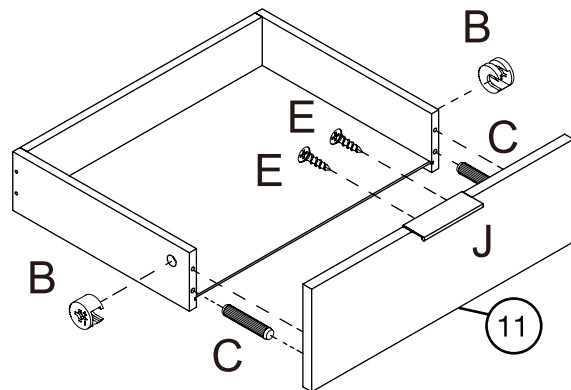
## Step 9

It's time to put the drawer together! Attach the Drawer Back (14) to the Drawer Left (12) and Right Sides (13) using M4\*35 mm Screws (D). Then slide the Drawer Bottom (10) into the groove.



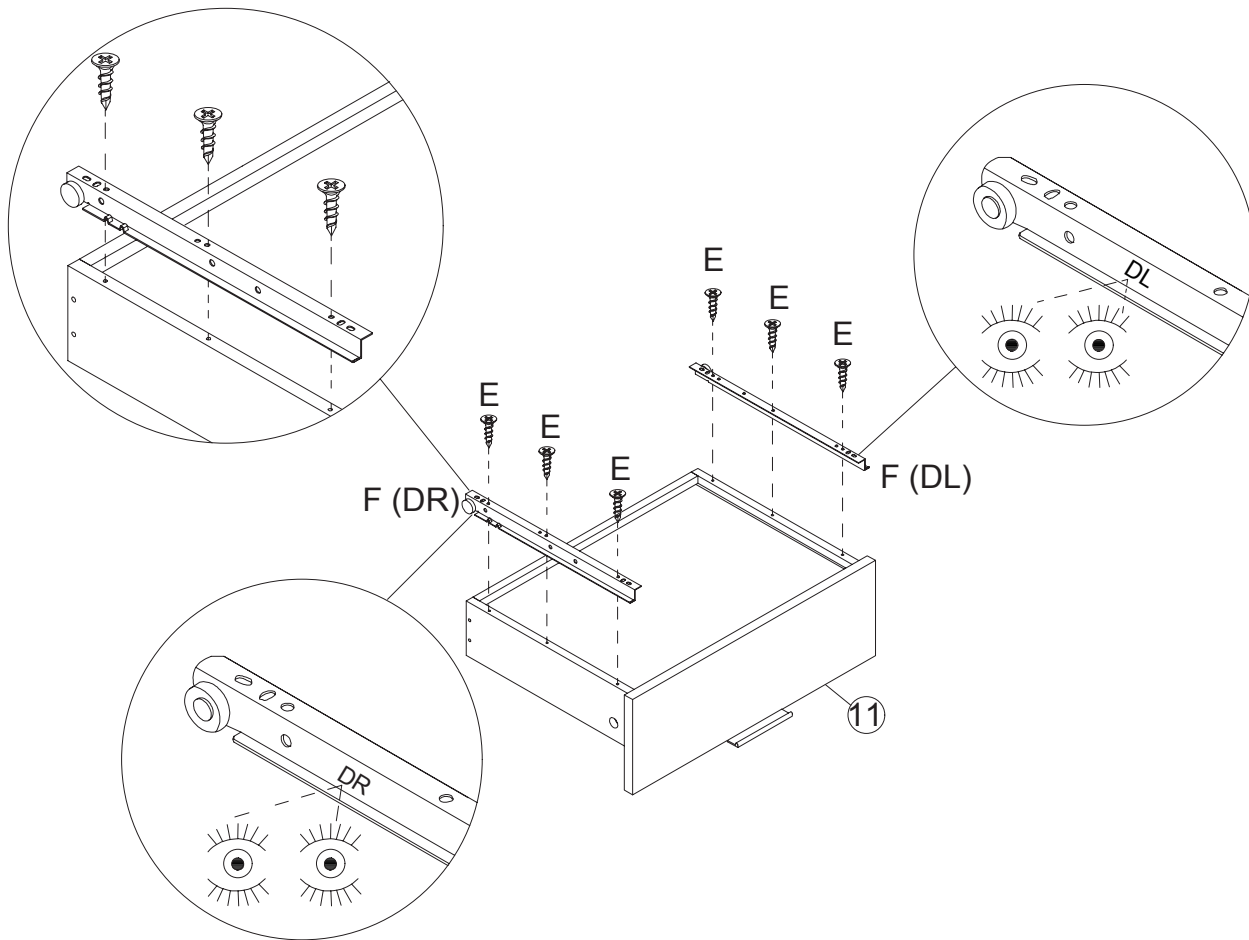
## Step 10

Every good drawer needs a drawer front. Insert the Drawer Front (11) using Wooden Dowels (C) and Cam Bolts (A). Then insert the Cam Locks (B) to lock those in place. Attach the Handle (J) to the top of the drawer using M3\*12 mm Screws (E).



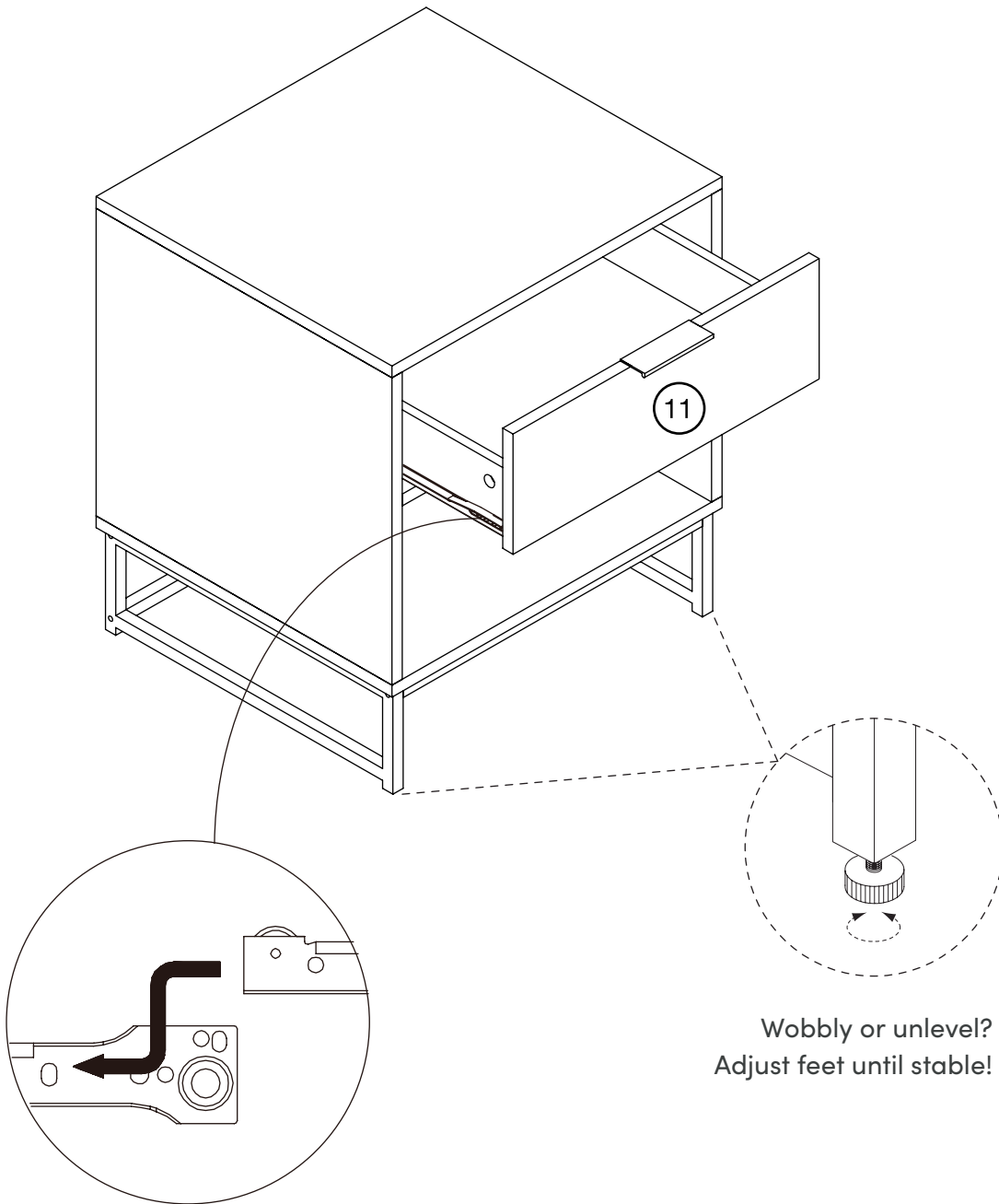
# Step 11

Time to make sure that drawer slides.  
Attach the Left (DL) (F) and Right Side  
Drawer Sliders (DR) (F) to the bottom of the  
drawer using M3\*12 mm Screws (E). Make  
sure you attach them to the correct sides!



# Step 12

Now just slide that beautiful drawer in and adjust the feet as necessary!  
You did it! We're so proud of you. Now where's that pizza we ordered...?





# No heartburn, when we handle the return

Give us a call **1-866-619-1004** or shoot us a message  
at **help@nathanjames.com** we will issue you a free  
replacement with **zero hassle**.

## Our way



Give us a call



Replacement



You

## Their way



Re-package item



Schedule pick up



Track package



Replacement



You

We really don't want you to go through the hassle of re-packaging your item  
and sending it back, because let's be honest...nobody has time for that.



# Safety first, fun later

We want your Kensi End Table to last as long as possible, so we recommend that you tighten the screws 2 weeks after assembly and for added safety check the tightness of all screws every 2 months.

For proper care and treatment of wood & metal please check our website at [NathanJames.com/products](http://NathanJames.com/products)

## Safe use of this product starts with you.

Use this Kensi End Table responsibly with the primary concern for your safety. Follow assembly instructions carefully and inspect product upon receipt and each use.

Nathan James and its parent companies cannot be held legally responsible for any injuries or death resulted from failure to follow instructions or improper use of this product.

## Do not modify the structure of this product in any way.

Our products have been tested to meet specific safety measures as they were originally intended to be sold. Any modifications will present the risk of creating significant safety issues which NJ will not be responsible for.

## Proper use

- |               |  |
|---------------|--|
| <b>DO NOT</b> | use for commercial purposes            |
| <b>DO NOT</b> | climb on side table                    |
| <b>DO NOT</b> | exceed weight limit                    |
| <b>DO NOT</b> | leave spilled liquid on side table     |
| <b>DO NOT</b> | use if side table is damaged or broken |
| <b>DO NOT</b> | make temporary repairs                 |
| <b>DO NOT</b> | use outdoors                           |



# We are only in business if you're happy

For starters, thanks for being you.

☎ Toll-free at 1-866-619-1004

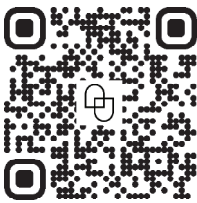
✉ Help@nathanjames.com

🌐 NathanJames.com/help

We do our best to ensure your furniture arrives without any problems, but occasionally mistakes happen—as humans we are imperfect beings. In the event that a part is damaged or missing, we will be more than happy to provide you with replacement part(s) for free.

## Warranty

This product comes with a lifetime warranty from the date of purchase. Please use your phone to scan the QR code to register your product or visit <https://goo.gl/i9dk3q>



### Did we do alright? Please spread the love!

If you are happy with your product, tell your friends and family about us or even better leave us a review online. Spreading the word gives us the opportunity to make more people happy and keep our prices low for your next purchase.

*Brooklyn Burdon*

Founder, Nathan James