

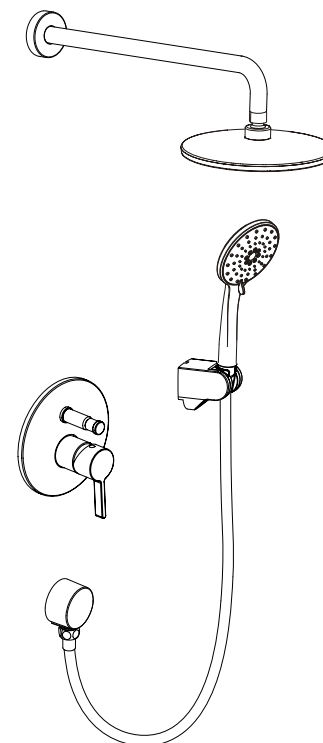
## ■ Trouble-Shooting

PROBLEM	CAUSE	ACTION
Leakage under the hand shower connection.	The O ring is defective.	Change a new O ring at the connection between hand shower and hose.
Leakage under shower head or under ceiling spout.	The O ring or rubber ring is defective.	If leakage is from ceiling spout, replace the defective O ring or rubber ring. If leakage is keep on after shout off the showe head, replace the cartridge.
The water is getteing small from the shower.	There is barrier or incrustation, water pressure problem.	Clean the shower, reinstall it. If the problem is still exist, the water pressure maybe too low to use. We suggest to add one electric water pump.
The handle is not turning smoothly.	The cartrdige is defective or has impurity.	Clean the impurity inside the cartridge. If the cartridge is defective, just change a new one.
Abnormal sound from the shower.	The water pressure is too high or there is barrier or incrustation.	Reduce the water pressure. If problem is still exist, the barrier or inscrustation is in the inlet hose. Clean the barrier or inscrustation.

# Pia Ricco®

## GUIDE FOR PRODUCTION

### SHK-9103MB

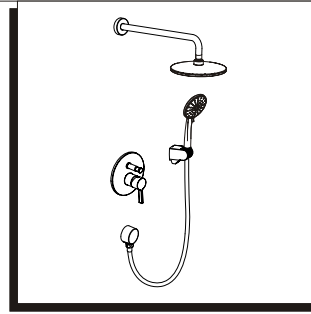


Please read this instruction carefully before use

# Pia Ricco®

## Single Handle Concealed Bath-shower Faucet

To ensure that your installation proceeds smoothly-please read these instructions carefully before you begin.



## ■ After-sales service

Please keep the box and packaging materials until your product is completely installed. If you have any questions, require technical assistance or have any problems with your product:

**Please contact our Customer Service Team: [Info@firstopintl.com](mailto:Info@firstopintl.com)**

If for any reason this product does not meet your expectations, please be sure to repack this production to the original box with packaging material to avoid damage during transit.

## ■ STANDARDS

Products are in compliance with the following standard

- ASME A112.18.1-2018/CSA B125.1-18

## SHK-9103MB

Shower Faucet  
Matte Black

### Material

Body: Brass  
Handle: Zinc  
Waterway: Brass

### Faucet Type

Shower Faucet

### Cartridge

Type: Ceramic Cartridge  
Size: D40P

### Accessories Included

Hex Wrench (2.5mm)

### Waterlines

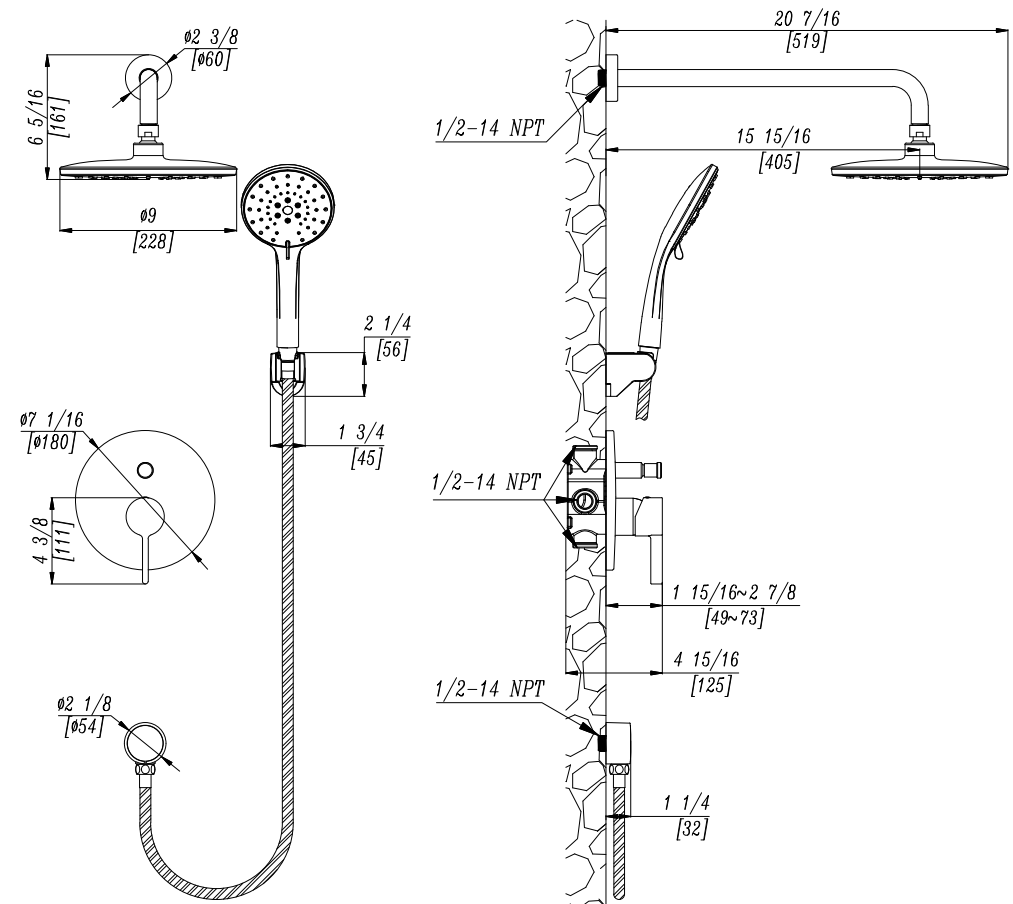
Length: 20 7/16"  
Materials: Steel

### Mounting

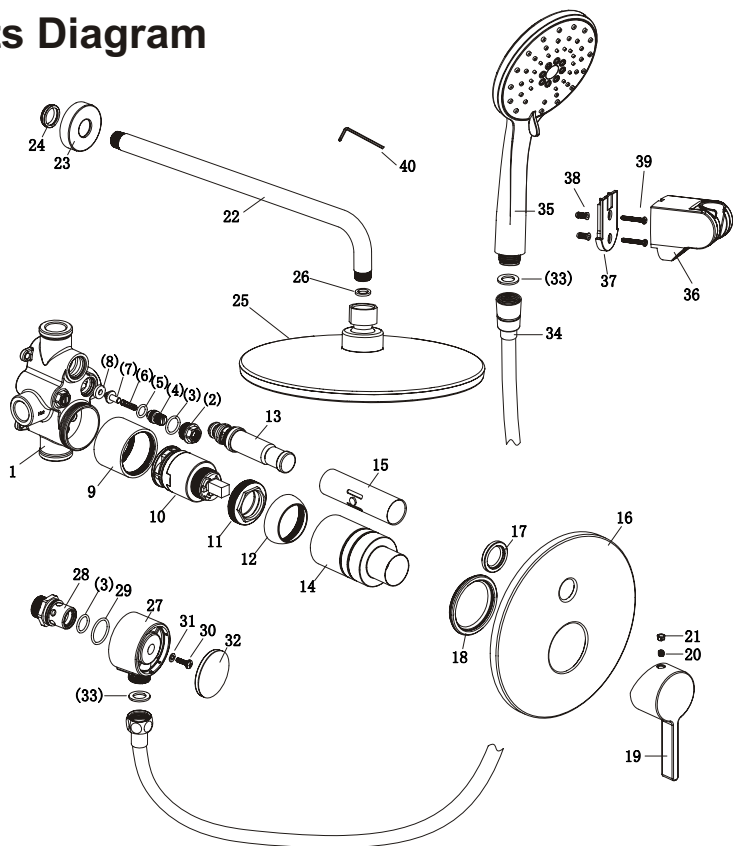
Holes: 3 Holes

### Dimensions

Top Spray Shower Height: 6 5/16"  
Decorative Panel Height: 7 1/16"



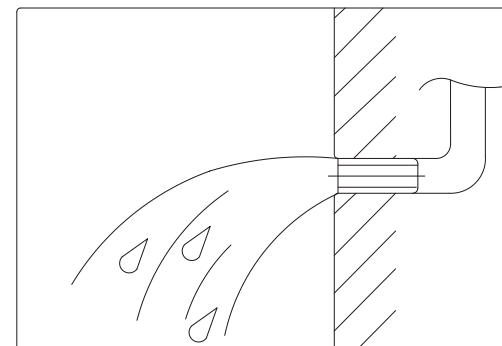
## ■ Parts Diagram



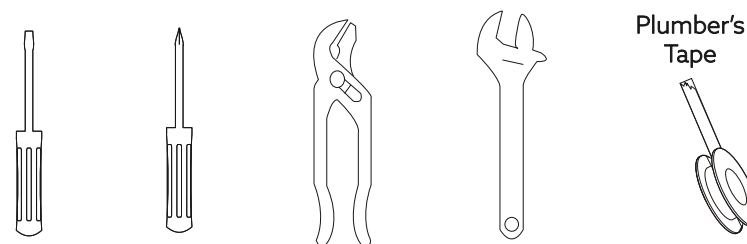
No.	Name	No.	Name	No.	Name
1	The main body	15	Protection coat	29	O-ring
2	Regulating valve jacket	16	Decorative plate	30	Screw
3	O-ring	17	Decorative o-ring	31	Washer
4	Regulating valve core	18	Buckle of synthetic	32	Decorative covers
5	O-ring	19	Handle	33	Washer
6	Spring	20	Screw	34	Shower hose
7	Regulating valve stem	21	Cover	35	Hand Shower
8	Washer	22	Shower arm	36	Holder
9	Cartridge protective sleeve	23	Decorative cup	37	Stator
10	Cartridge	24	Decorative o-ring	38	Inflation colloidal particles
11	Lock nut	25	Sprayer head	39	Screw
12	Trim cap	26	Washer	40	Allen key
13	Water knockout drum	27	Decorative seat		
14	Protection coat	28	Connector		

## ■ Prior to Installation

- Make sure you have all necessary parts by checking the diagram and parts list. If any part is missing or damaged, please contact **Pia Ricco** Customer Service at [Info@firstopintl.com](mailto:Info@firstopintl.com) for a replacement.
- Turn off the hot and cold water supply at the angle stops and turn on the old faucet to release any built up pressure. Remove existing faucet. Clean sink or countertop to remove any debris, plumber's putty, or silicone.
- Flush angle stops to release any debris prior to installation.
- 3 Hole installation
- In order to avoid the obstruction of faucet, please clean the impurities and sludge of pipe before assembly.

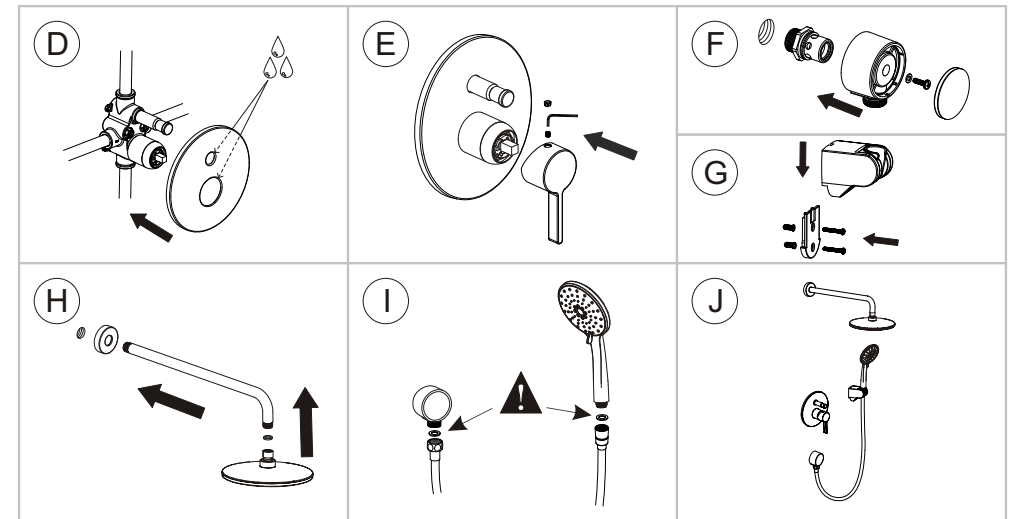
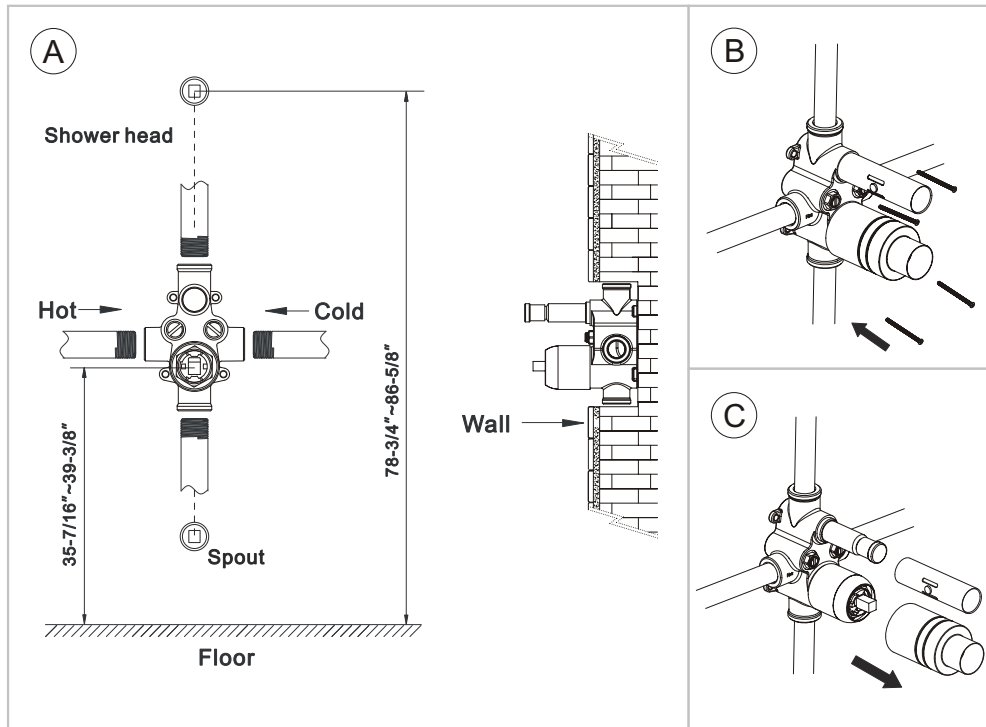


## ■ Tools Required



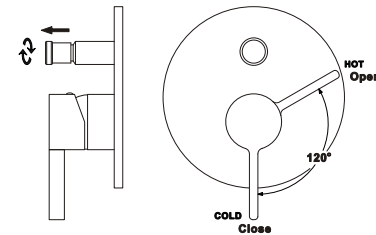
## ■ Faucet Installation Steps

- 1.Refer to the pipe and the height of the faucet body from Figure(A),the faucet body should be inside the wall after installation.
- 2.Connect the pipes to the body, fix the faucet body to the wall by screw.(As Figure B).
- 3.Remove the plastic cover of the faucet body, assemble the plate and handle. (As Figure C, D and E). Use an easy-to-clean alkaine lubriant on the buckle of synthetic of the decorative plate to make it easier to install the decorative plate on the main body.(As Figure D).
- 4.Install the decorative base and shower head, fix the shower holder to the wall. (As Figure F, G and H)
- 5.Connect the shower hose to the decorative base and hand shower Don't forget to install rubber ring.The installation is finished.(As Figure I and J).



## ■ Instructions

- This product uses pressure balanced valve, just turn the handle to the right, the water is open. The larger the angle is, the higher the water temperature Will be. With the handle open, lift up and turn the diverter cover by 45 degree, the shower head will have water. Reset the diverter, the hand shower will have water. Attention: Because the diverter cover cannot reset automatically, you have to reset the diverter cover to make hand shower have water.



## ■ Care & Maintenance

To keep the product clean & shining, follow the steps below:

- 1.Rinse with clean water & dry with a soft cloth
- 2.Do not clean with soaps, acid, polish, abrasives or harsh cleaners
- 3.Do not use cloth with a coarse surface
- 4.Unscrew the aerator and clean when necessary