

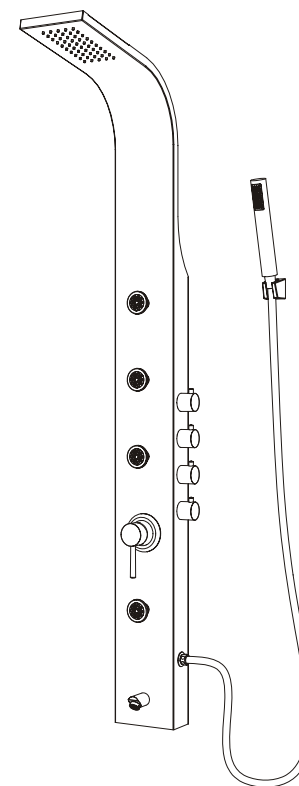
## ■ Trouble-Shooting

PROBLEM	CAUSE	ACTION
Leakage under the hand shower connection.	The O ring is defective.	Change a new O ring at the connection between hand shower and hose.
Leakage under shower head or under ceiling spout.	The O ring or rubber ring is defective.	If leakage is from ceiling spout, replace the defective O ring or rubber ring. If leakage is keep on after shout off the showe head, replace the cartridge.
The water is getteing small from the shower.	There is barrier or incrustation, water pressure problem.	Clean the shower, reinstall it. If the problem is still exist, the water pressure maybe too low to use. We suggest to add one electric water pump.
The handle is not turning smoothly.	The cartrdige is defective or has impurity.	Clean the impurity inside the cartridge. If the cartridge is defective, just change a new one.
Abnormal sound from the shower.	The water pressure is too high or there is barrier or incrustation.	Reduce the water pressure. If problem is still exist, the barrier or inscrustation is in the inlet hose. Clean the barrier or inscrustation.

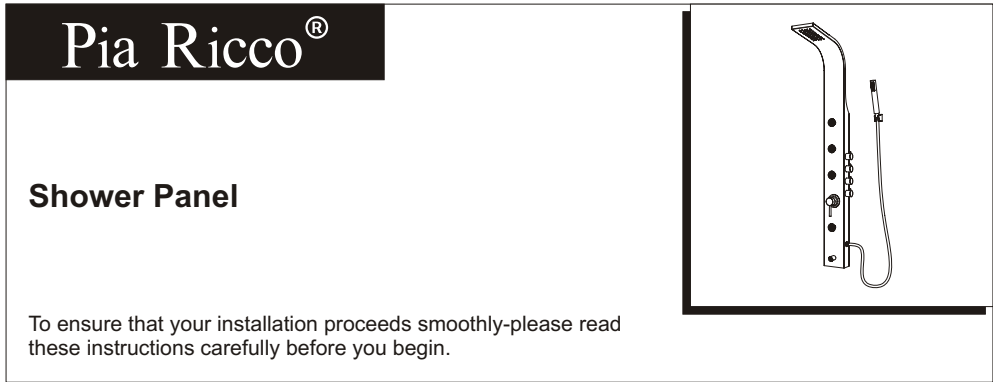
# Pia Ricco®

## GUIDE FOR PRODUCTION

### SHP-9201CH



Please read this instruction carefully before use



To ensure that your installation proceeds smoothly-please read these instructions carefully before you begin.



Please keep the box and packaging materials until your product is completely installed. If you have any questions, require technical assistance or have any problems with your product:

If for any reason this product does not meet your expectations, please be sure to repack this production to the original box with packaging material to avoid damage during transit.

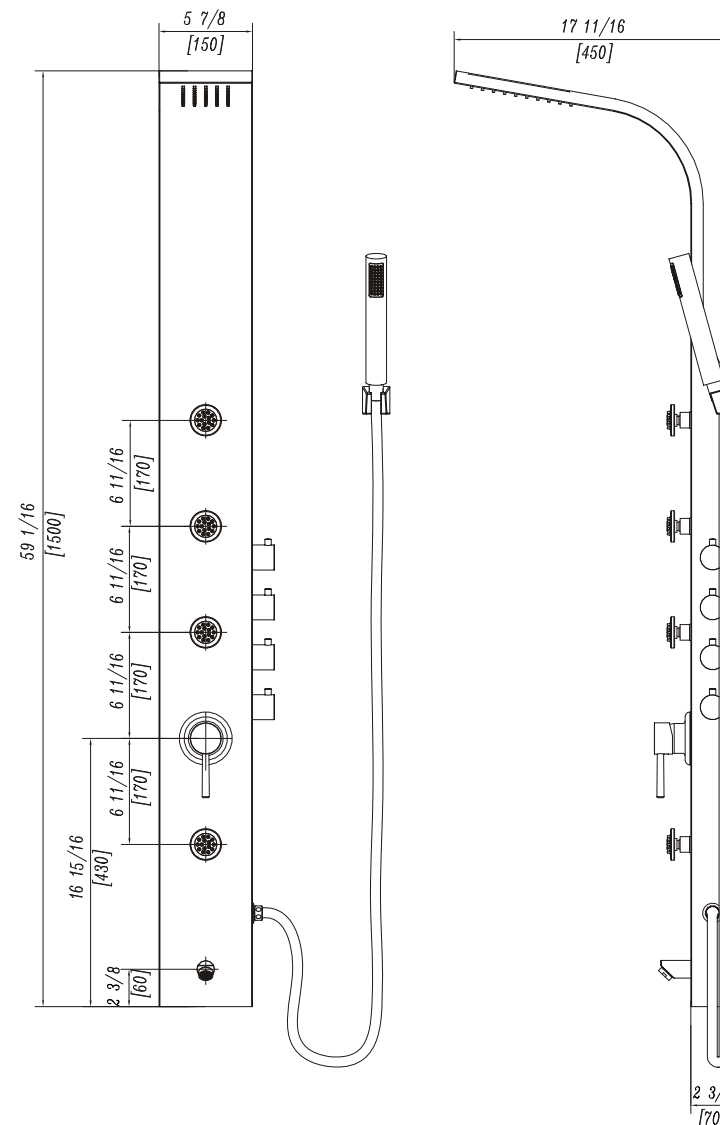
Shower Panel  
Polished Chrome

Body: Steel  
Handle: Brass  
Waterway: Steel

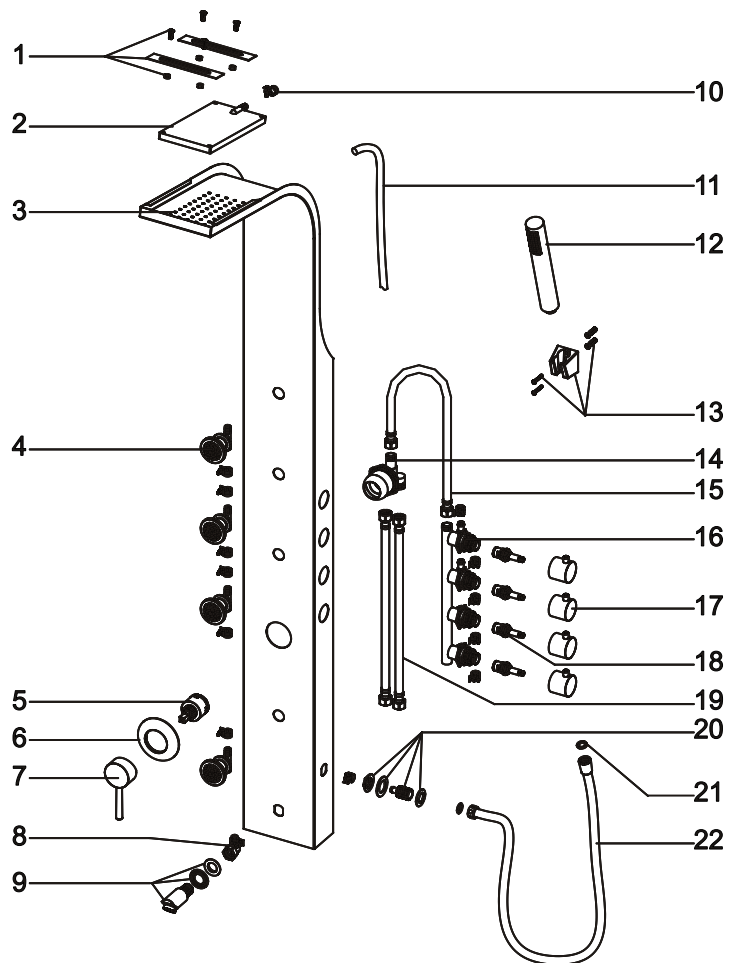
## Shower Panel

## Wall Mounting

Overall Height: 59 1/16"  
Spout Reach: 17 11/16"



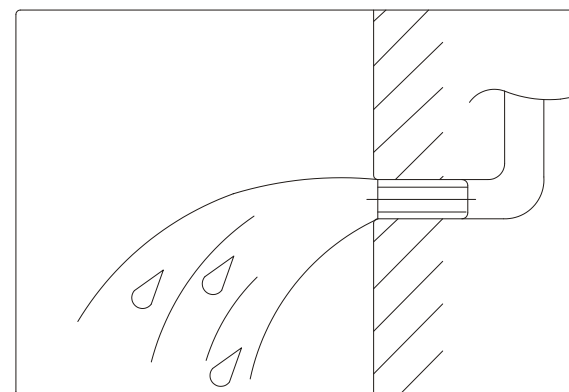
## ■ Parts Diagram



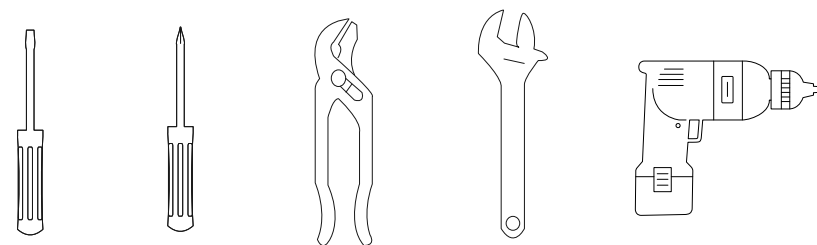
No.	Name	No.	Name	No.	Name
1	Screws	9	Spout	17	Diverter knob
2	Head shower	10	Clap	18	Cartridge
3	Body panel	11	Hose	19	Hose
4	Body jets	12	Hand shower	20	Connector
5	Cartridge	13	Holder	21	Washer
6	Trim cap	14	Faucet body	22	Hose
7	Handle	15	Hose		
8	Connector	16	Diverter part		

## ■ Prior to Installation

- Make sure you have all necessary parts by checking the diagram and parts list. If any part is missing or damaged, please contact **Pia Ricco** Customer Service at [Info@firststopintl.com](mailto:Info@firststopintl.com) for a replacement.
- Turn off the hot and cold water supply at the angle stops and turn on the old faucet to release any built up pressure. Remove existing faucet. Clean sink or countertop to remove any debris, plumber's putty, or silicone.
- Flush angle stops to release any debris prior to installation.
- In order to avoid the obstruction of faucet, please clean the impurities and sludge of pipe before assembly.

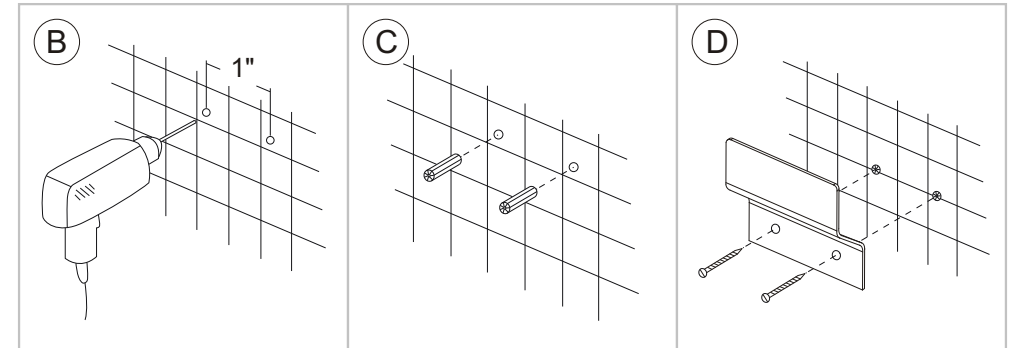
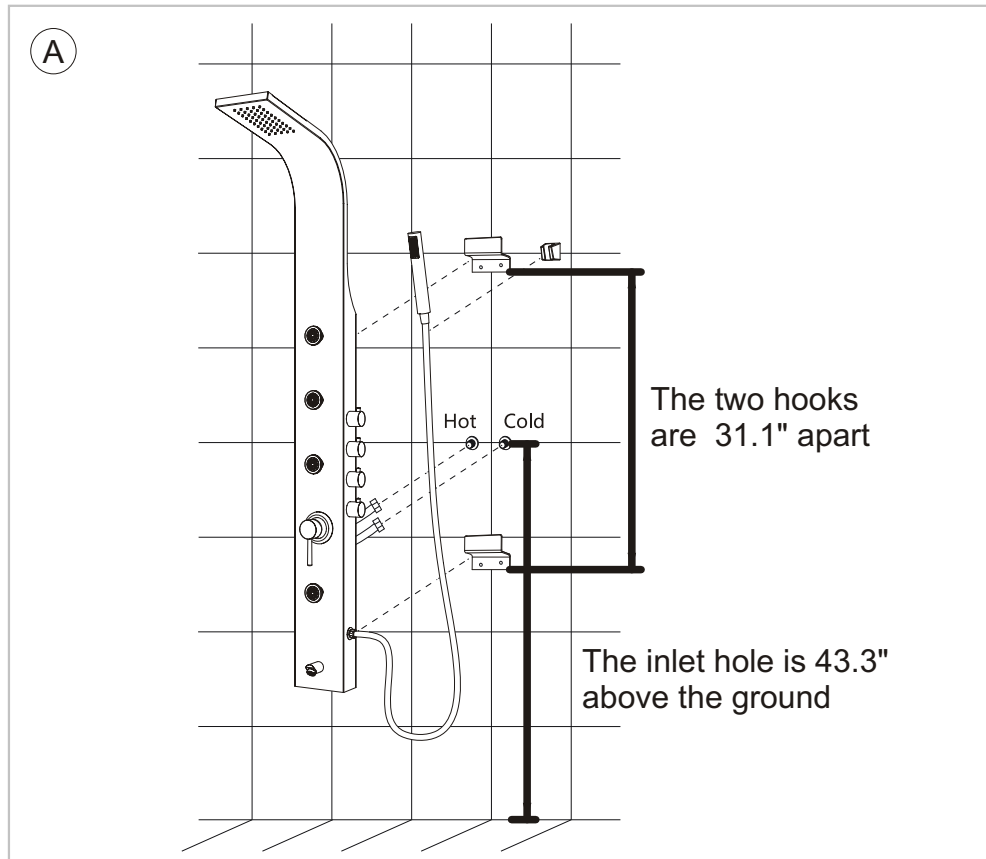


## ■ Tools Required



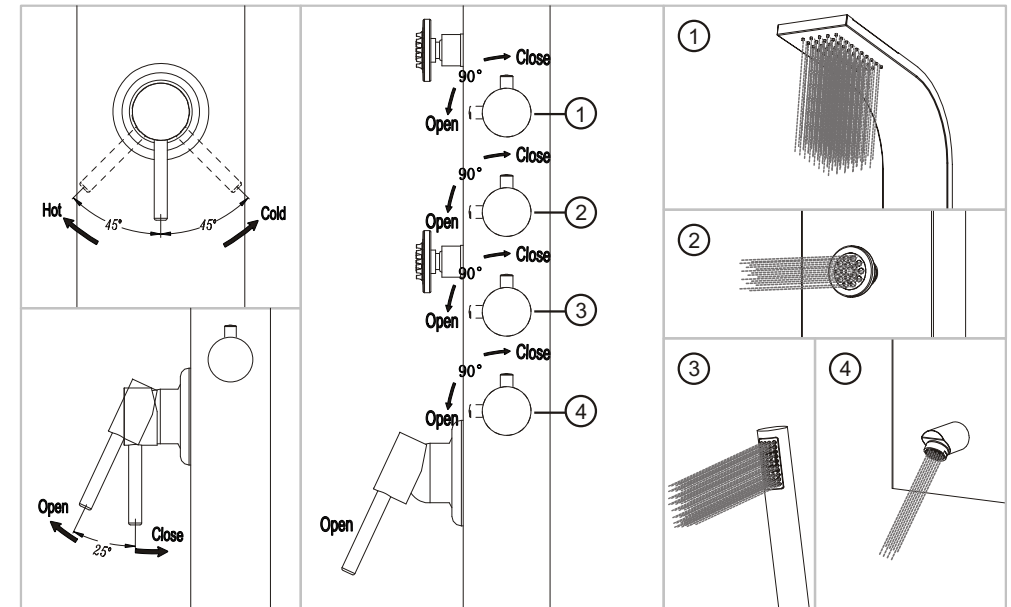
## ■ Faucet Installation Steps

- 1.first, mark the position of the hook hole and the position of the shower seat hole on the sign(As Figure A).
- 2.Use an electric drill to make a hole in the wall(As Figure B), put colloidal screws in the hole(As Figure C), and screw the hook on the wall with screws(As Figure D).
- 3.Screw the water inlet pipe into the pre-installed hot and cold water connection hole correspondingly, and hang the shower screen on the two installed hooks. Finally, install the hand-held shower in a suitable position, and the height can be determined according to the actual situation,(As Figure A).



## ■ Instructions

- The usage method is shown in the figure.



## ■ Care & Maintenance

To keep the product clean & shining, follow the steps below:

- 1.Rinse with clean water & dry with a soft cloth
- 2.Do not clean with soaps, acid, polish, abrasives or harsh cleaners
- 3.Do not use cloth with a coarse surface
- 4.Unscrew the aerator and clean when necessary