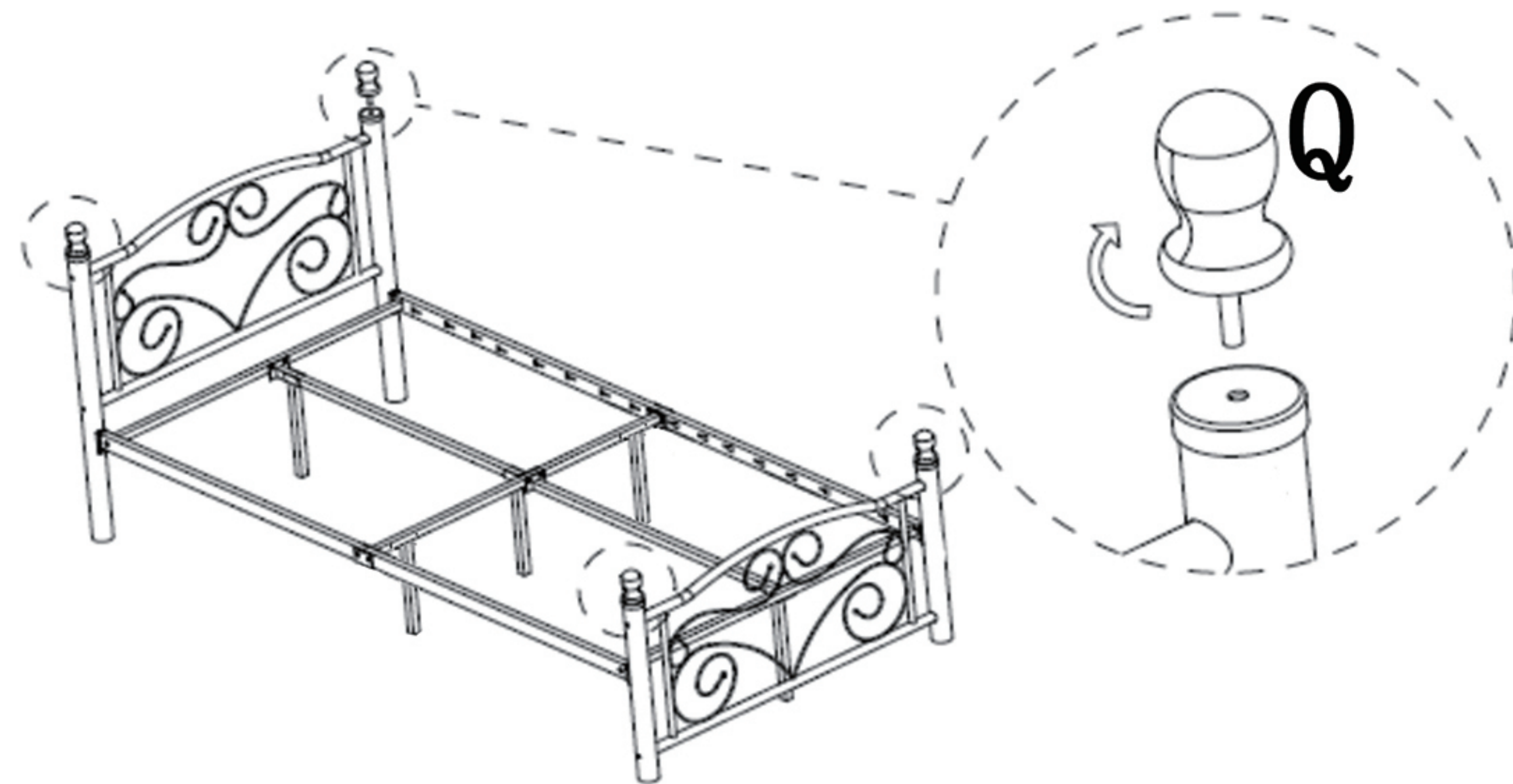
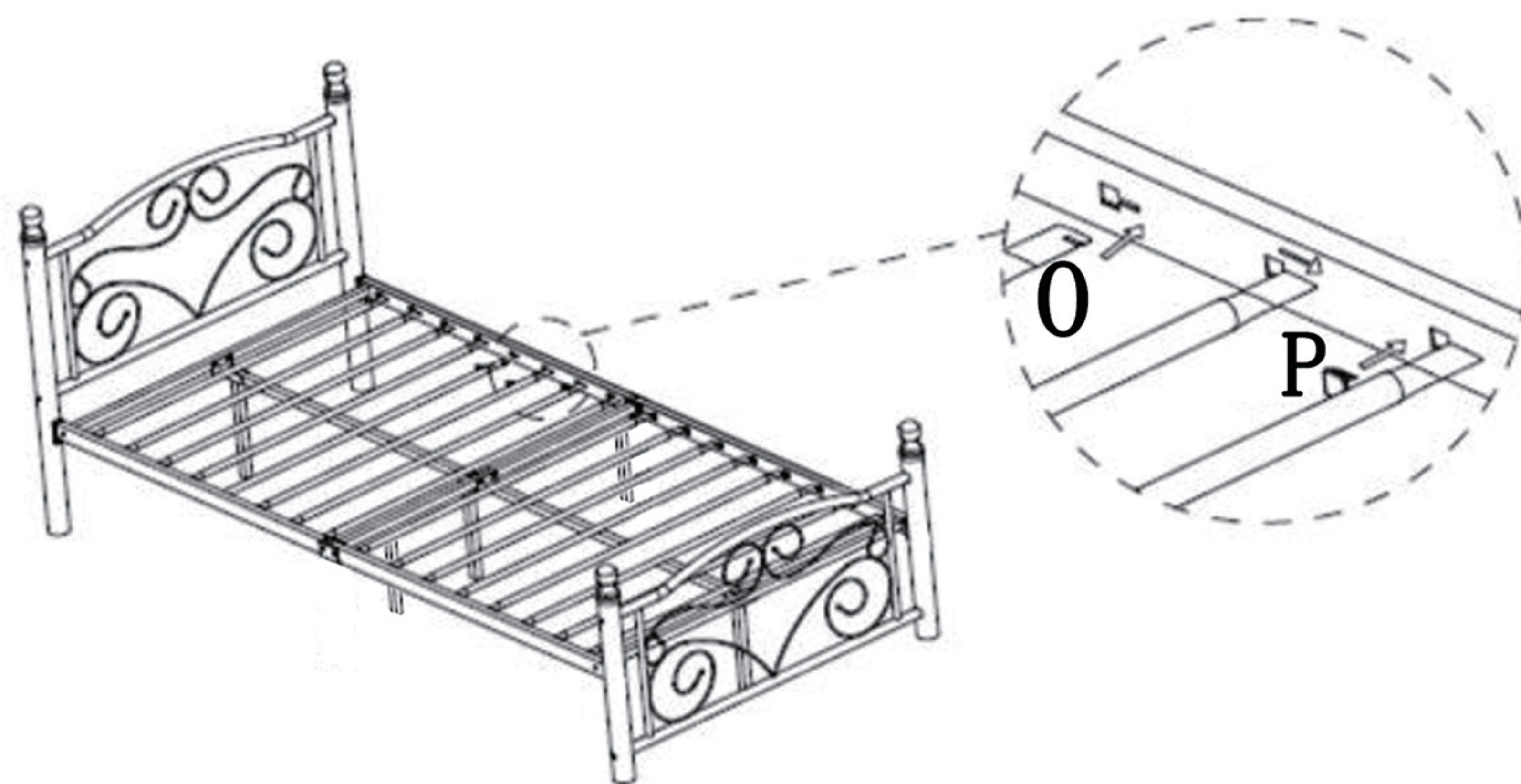


Note: Pls do not tighten all bolts until the bed is assembled completely


STEP 5



STEP 6



Please insert all slat connectors completely before putting the mattress

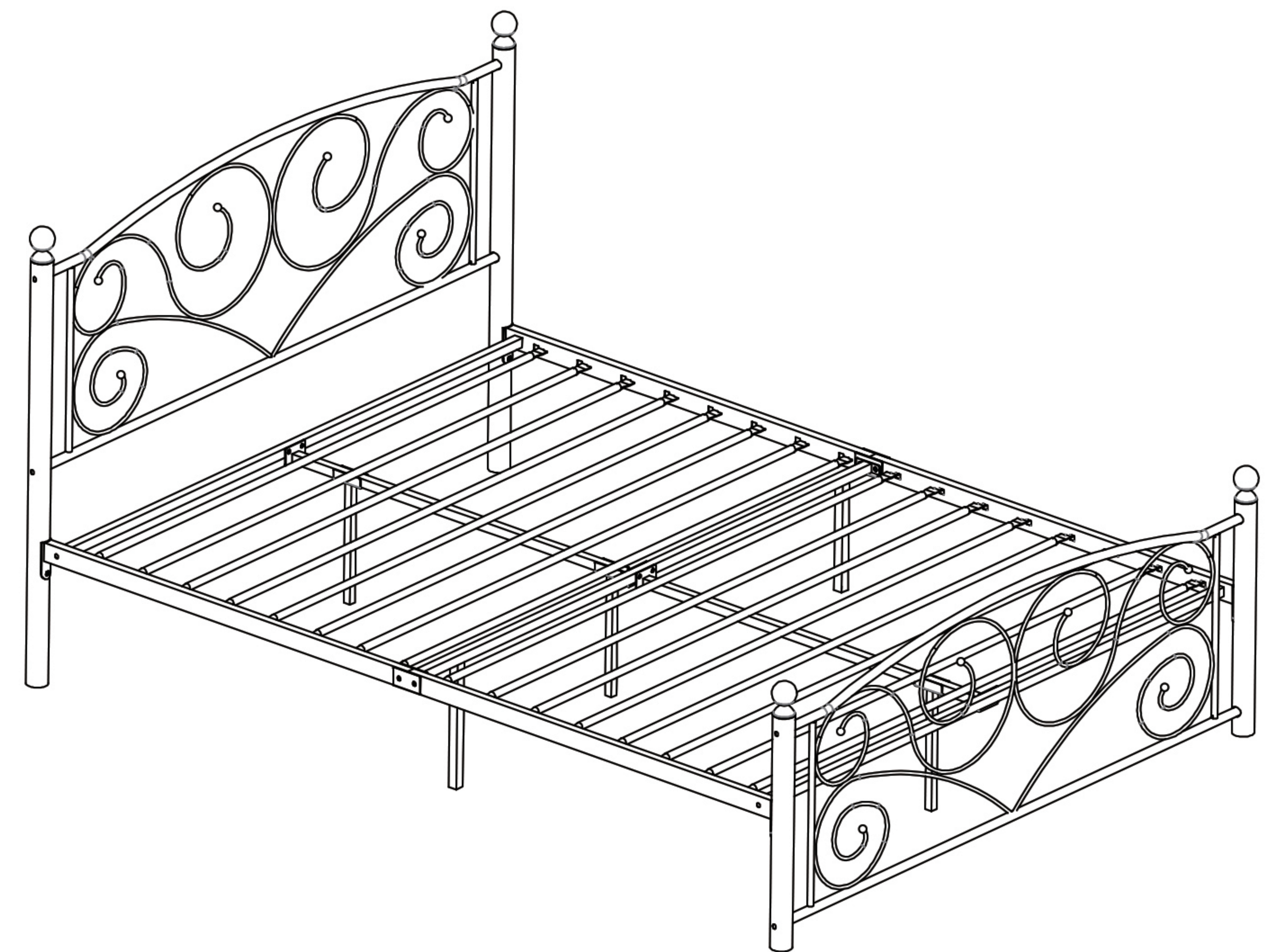
 For items use on wooden floor, hard surfaces or carpets, it is recommended to Install protective pads under all legs and supports to avoid/prevent from damages/scratches and discoloration. 3/3

ASSEMBLY INSTRUCTTON

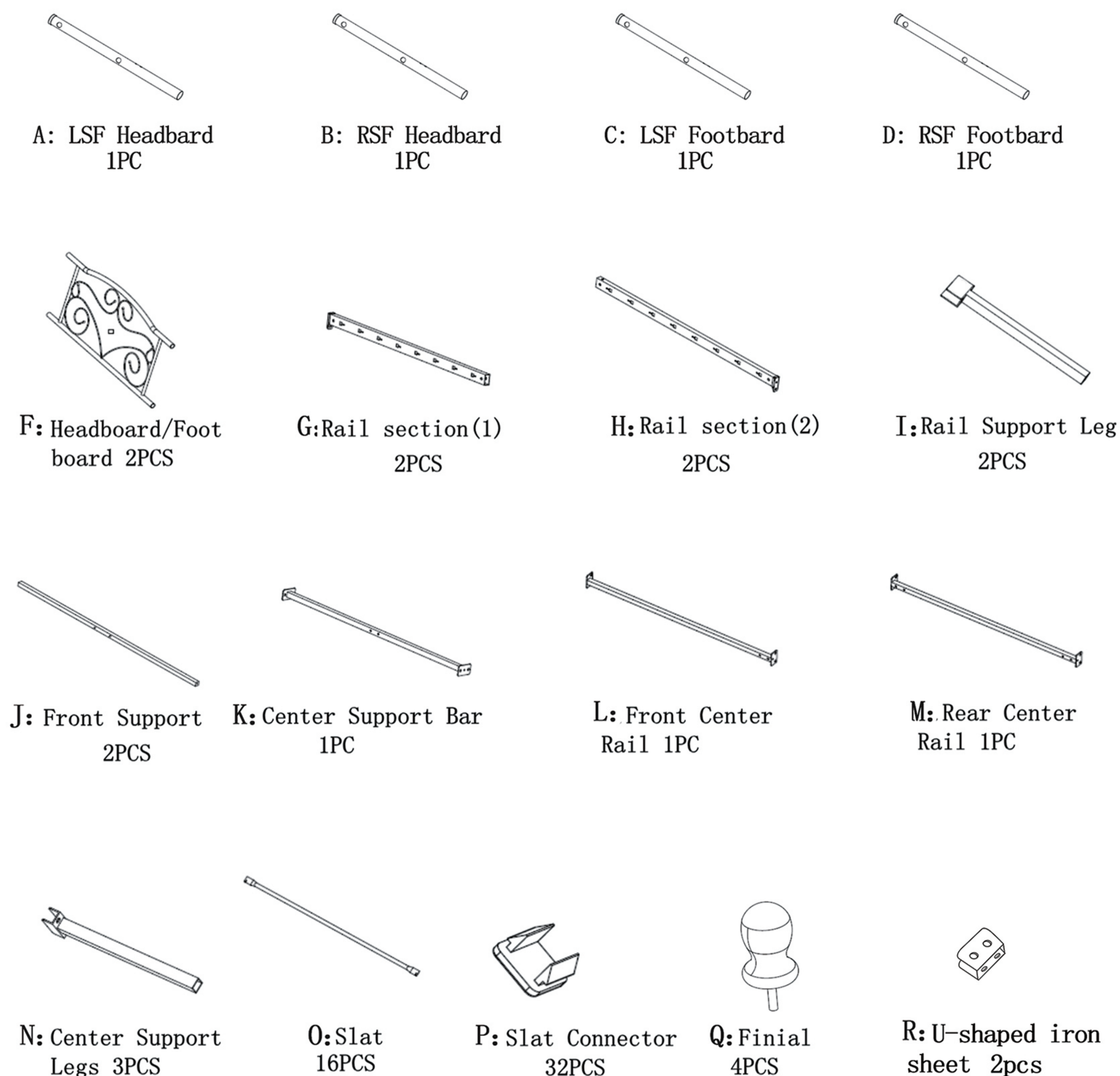
BED

USAN1019799A

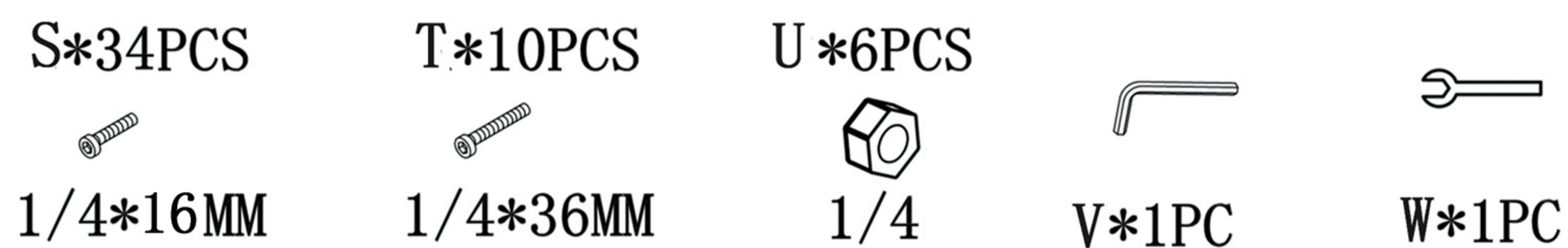
B026F



PART LIST:

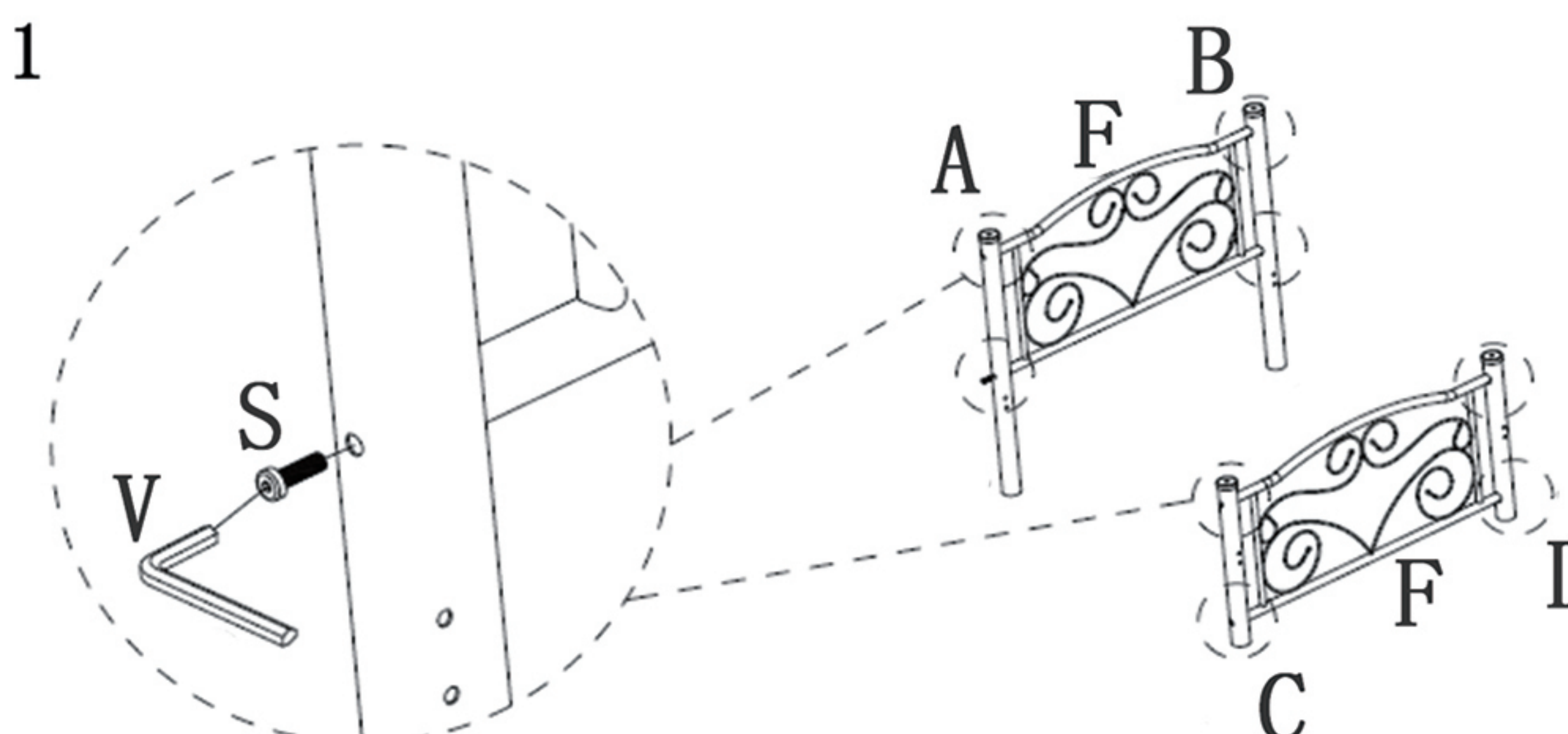


HARDWARE LIST:

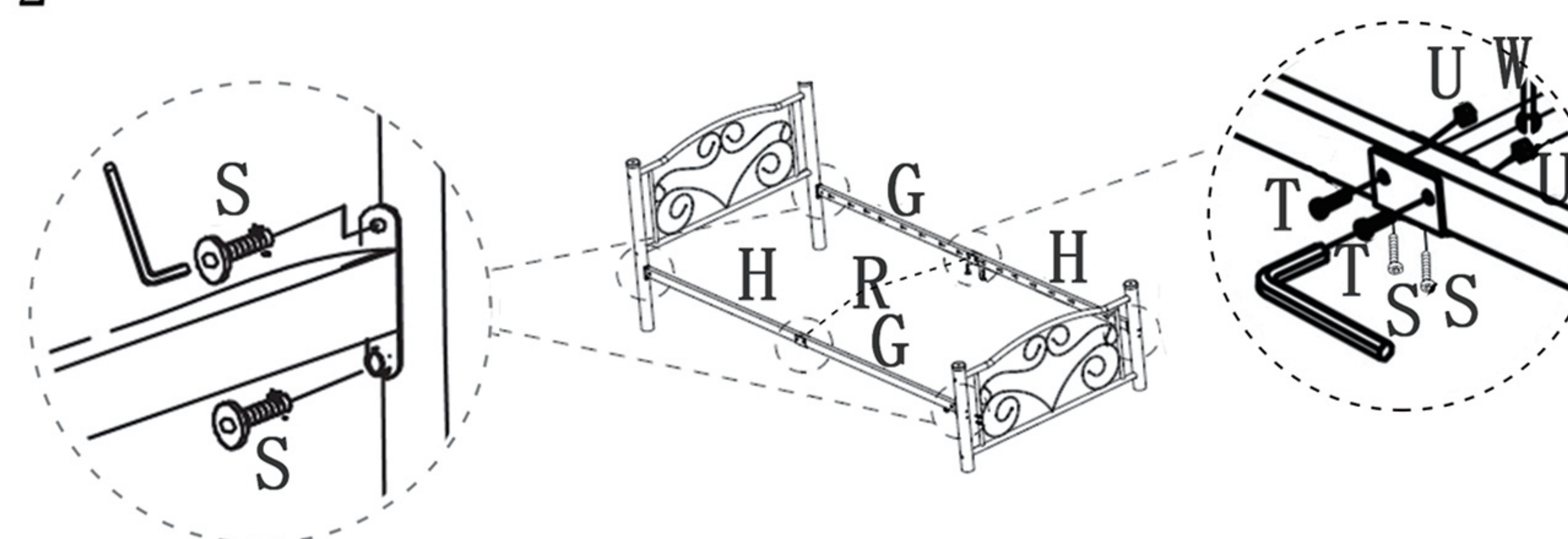


Note: Pls do not tighten all bolts until the bed is assembled completely

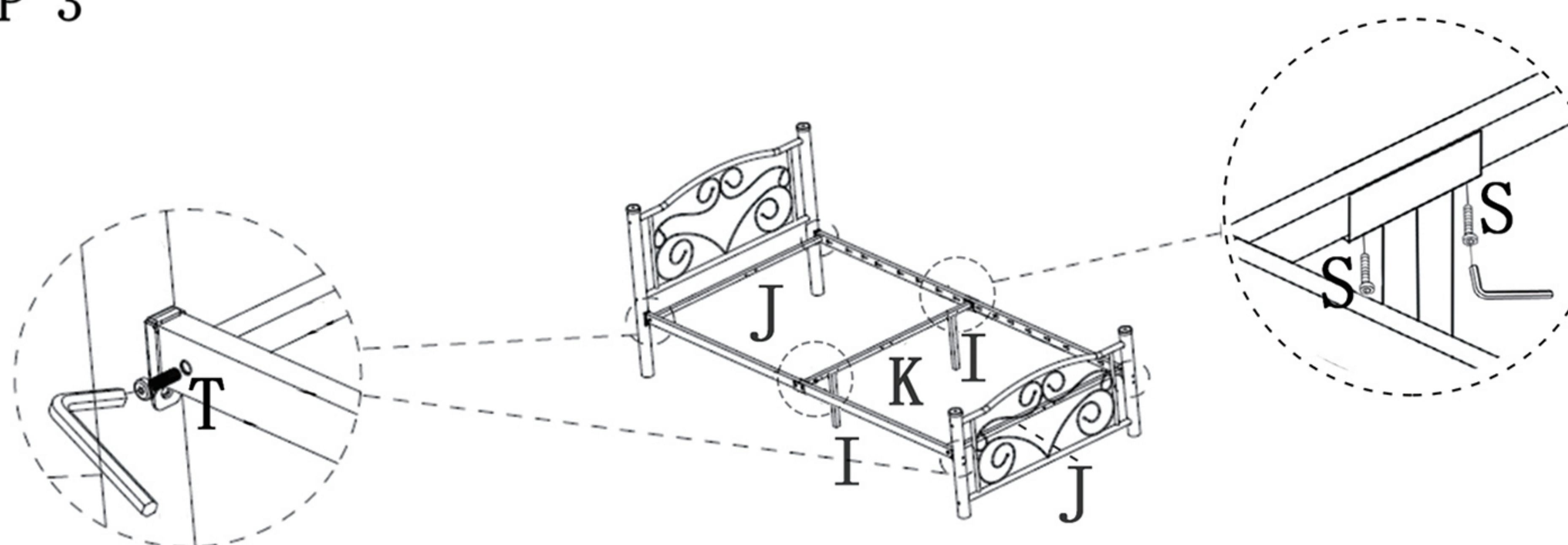
STEP 1



STEP 2



STEP 3



STEP 4

