

# HILARYFARR | DESIGNS

by Kaleen



“Love is found everywhere in life and that is reflected in each of the designs within my collections.”

—

**YOU’RE GOING TO LOVE IT.**

NEW IN TRODUCION

# Natural Jute

## COLLECTION

**HAND-CRAFTED FROM 70% JUTE & 30% WOOL**

---

Inspired by Hilary's deep love and protection of environment, the Natural Jute collection brings the outdoors in with a variety of geometric patterns with a hint of southwestern flair. The patterns of this collection are sure to warm your heart while adding an element of nature to any room. The Natural Jute collection is hand-crafted out of a Jute and Wool blended yarn, making them soft to the touch and easy to care for. Each of these rugs are hand finished to maintain their simple beauty. The Natural Jute collection is open-backed, lightweight, and easy to clean and care for.

---

**INDOOR USE ONLY, HAND SERGED AND FINISHED  
HAND-CRAFTED IN INDIA FROM JUTE & WOOL  
LIGHTWEIGHT, OPEN-BACKED, EASY TO CLEAN AND CARE FOR**

---

**0'18" x 0'18"**  
**2'6" x 8'0"**

**5'0" x 8'0"**  
**8'0" x 10'0"**

**9'0" x 12'0"**  
**9'6" X 13'0"**

**HILARYFARR** | **DESIGNS**







**NATURAL JUTE / Indoor**



**HJT01-02 | Black**



**HJT01-55 | Cinnamon**



**HJT02-02 | Black**



**HJT02-91 | Teal**



**HJT03-02 | Black**



**HJT03-38 | Charcoal**





HJT03-63 | Cayenne



HJT04-22 | Navy



HJT04-63 | Cayenne



HJT05-02 | Black



HJT05-78 | Turquoise



HJT06-104 | Seafoam



# Sterling Impressions

COLLECTION

**MACHINE-MADE FROM POLYESTER & SHRINK**

Hilary's love of antique books has come together in the new Sterling Impressions Collection. The patterns of this collection are inspired by the intricate silver filigree patterns of 18th Century book covers. The Sterling Impressions collection flows with the beauty of these ornate patterns in silver and grey with splashes of blues, warm golds, deep reds, and jewel toned greens. This collection is 100% machine-made from recycled polyester shrink yarn. Each of the rugs in this collection are machine-serged and open backed, making them lightweight and a breeze to move.

INDOOR USE ONLY, MACHINE SERGED AND FINISHED  
MACHINE-MADE IN TURKEY FROM POLYESTER & SHRINK  
LIGHTWEIGHT, OPEN BACKED, EASY TO CLEAN AND CARE FOR

1'6" x 1'6"  
1'10" x 2'9"

2'0" x 8'0"  
5'3" x 7'7"

7'10" x 10'10"  
8'5" x 11'6"

HILARYFARR | DESIGNS







**STERLING IMPRESSIONS /** Indoor



**HSI01-38** | Charcoal



**HSI01-86** | Multi



**HSI02-38** | Charcoal



**HSI02-75** | Grey



**HSI03-05** | Gold



**HSI03-86** | Multi





HSI04-38 | Charcoal



HSI04-77 | Silver



HSI05-75 | Grey



HSI05-77 | Silver



HSI05-86 | Multi



# Critter Comforts

## COLLECTION

**JACQUARD LOOMED FROM POLYESTER & CHENILLE**

---

Hilary's love for life on earth extends far beyond having fur. The Critter Comforts collection pays tribute to the smaller creatures on earth. From the noble Bumble Bee, fluttering Butterfly and crawling Beetles, this collection truly proves that bugs are beautiful. The Critter Comforts collection is Jacquard-Loomed out of a Polyester and Chenille blended yarn making them soft to the touch and easy to care for. Each of these rugs have a hidden machine serging that creates a borderless design with the strength of serged edges and finished with Kaleen's signature cotton canvas backing making them extra durable.

---

**INDOOR USE ONLY, MACHINE SERGED  
COTTON CANVAS BACKING FOR DURABILITY  
MADE IN INDIA**

---

**2'0" x 3'0"**  
**3'0" x 5'0"**

**5'0" x 8'0"**  
**8'0" x 10'0"**

**5'0" x 5'0" RD**

**HILARYFARR** | DESIGNS





HCC03-05



CRITTER COMFORTS / Indoor



HCC01-17 | Blue



HCC01-79 | Light Blue



HCC01-92 | Pink



HCC02-02 | Black



HCC02-76 | White



HCC02-79 | Light Blue





HCC03-05 | Gold



HCC03-17 | Blue



HCC03-78 | Turquoise



# Flora Fantasies

## COLLECTION

**HAND-TUFTED FROM 100% P.E.T. POLYESTER**

---

Hilary's love for interior design doesn't stop at the patio doors. The Flora Fantasies collection consists of floral inspired patterns in today's hottest colors. Kaleen's special UV protective treatment makes this collection completely versatile – the perfect choice to add a pop of color to your patio, porch or indoor living spaces. These hand-tufted rugs are not only beautiful, but also good for the environment as they are woven from 100% P.E.T Polyester yarn which is spun from fibers made out of recycled plastic bottles. Each of these single pile rugs is serged by hand and finished with Kaleen's signature anti-skid backing.

---

**INDOOR/OUTDOOR USE, UV-STABILIZED, FADE & HEAT RESISTANT  
HAND-TUFTED & FINISHED FROM 100% P.E.T POLYESTER IN INDIA  
FEATURES KALEEN'S NON-SKID BACKING FOR EXTRA SAFETY**

---

**2'0" x 3'0"**

**2'0" x 6'0"**

**5'0" x 8'0"**

**5'9" x 5'9" RD**

**7'9" x 7'9" RD**

**8'0" x 10'6"**

**9'6" x 13'0"**

**CUSTOM SIZES AVAILABLE**

**HILARYFARR | DESIGNS**







**FLORA FANTASIES /** Indoor/Outdoor



**HFL01-05 |** Gold



**HFL01-17 |** Blue



**HFL01-75 |** Grey



**HFL01-86 |** Multi



**HFL01-104 |** Seafoam





*Hifary*



# Forever Fauna

## COLLECTION

**JACQUARD LOOMED FROM POLYESTER & CHENILLE**

---

Inspired by Hilary's deep love and protection of animals, The Forever Fauna collection brings the outdoors in with an array of designs ranging with the majestic Giraffe and African Zebra. The frolicking animals you will find within the patterns of this collection are sure to warm your heart while adding an element of whimsy to any room. The Forever Fauna collection is Jacquard-Loomed out of a Polyester and Chenille blended yarn making them soft to the touch and easy to care for. Each of these rugs have a hidden machine serging that creates a borderless design with the strength of serged edges and finished with Kaleen's signature cotton canvas backing making them extra durable.

---

**INDOOR USE ONLY, MACHINE SERGED  
COTTON CANVAS BACKING FOR DURABILITY  
MADE IN INDIA**

---

**2'0" x 3'0"**  
**3'0" x 5'0"**

**5'0" x 8'0"**  
**8'0" x 10'0"**

**5'0" x 5'0" RD**

**HILARYFARR** | DESIGNS







**FOREVER FAUNA / Indoor**



**HFA01-38** | Charcoal



**HFA01-50** | Green



**HFA01-75** | Grey



**HFA02-22** | Navy



**HFA02-38** | Charcoal





Hilary



# Global Altitude

## COLLECTION

**MACHINE-MADE FROM POLYESTER & OLEFIN**

---

Some of the most beautiful sites from Hilary's travels have been spotted from thirty thousand feet above the earth which is the inspiration for her Global Altitude collection. The warmth of deserts, crispness of the mountains and the high contrast of the polar ice caps have been transformed into these stylish rugs. The dramatic high-low pile combined with the bold color pallets of nature are sure to add contemporary global style to any room. Machine loomed using a stain-resistant Polyester and Olefin blended yarn makes these rugs silky soft, durable and easy to care for. Each of the rugs in this collection are machine serged and open backed making them light weight and a breeze to move.

---

**INDOOR USE ONLY, MACHINE SERGED  
MACHINE LOOMED FROM POLYESTER & OLEFIN IN TURKEY  
OPEN BACKED, LIGHT WEIGHT, EASY TO CLEAN & CARE FOR**

---

**2'0" x 3'0"**  
**2'2" x 7'6"**

**3'11" x 5'3"**  
**5'3" x 7'3"**

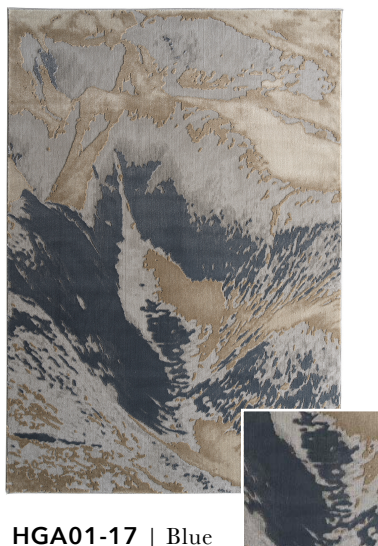
**7'10" x 10'0"**  
**9'3" x 12'0"**

**HILARYFARR** | DESIGNS









HGA01-17 | Blue



HGA02-29 | Sand



HGA03-29 | Sand



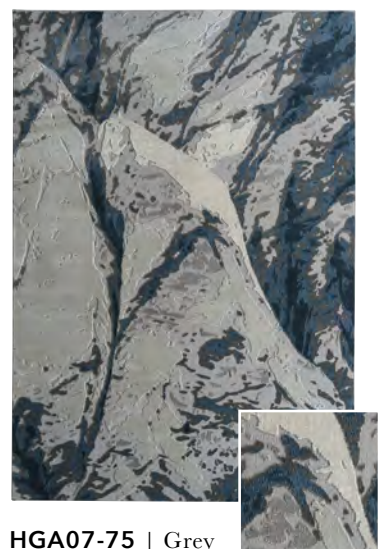
HGA04-75 | Grey



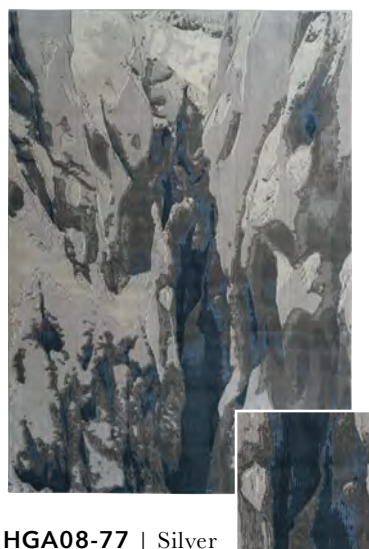
HGA05-17 | Blue



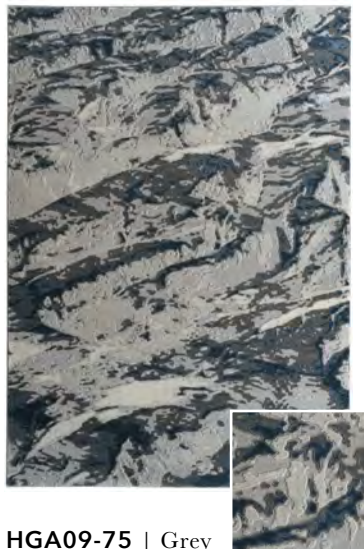
HGA06-77 | Silver



HGA07-75 | Grey



HGA08-77 | Silver

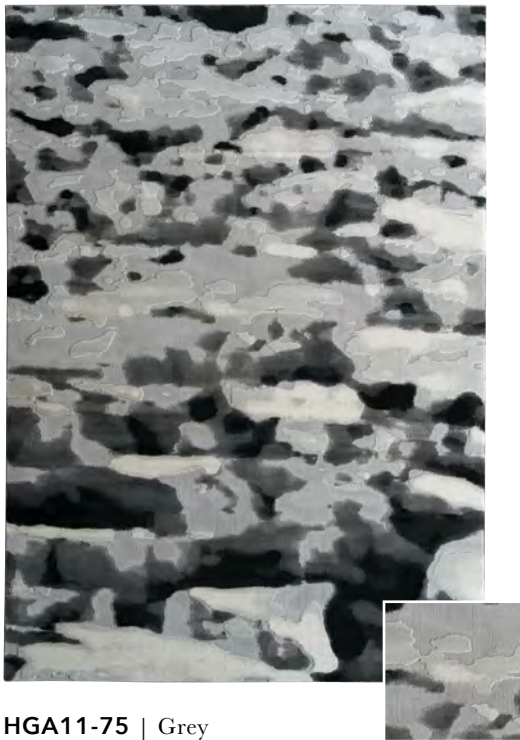


HGA09-75 | Grey





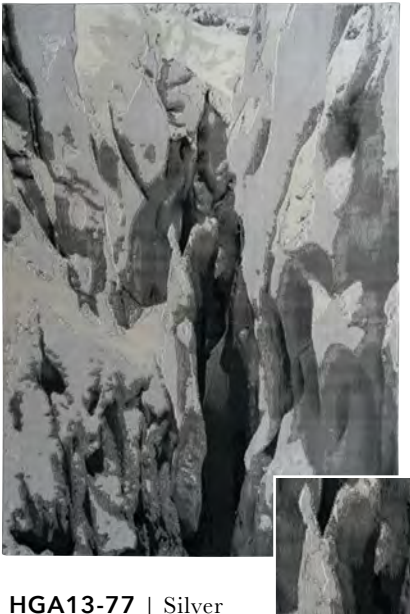
HGA10-02 | Black



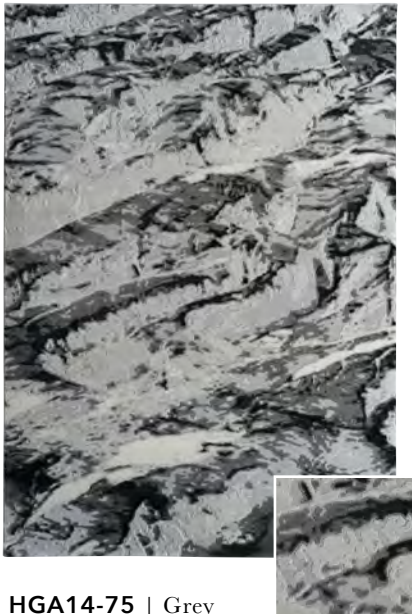
HGA11-75 | Grey



HGA12-75 | Grey



HGA13-77 | Silver



HGA14-75 | Grey



# Knotted Earth

## COLLECTION

**HAND-KNOTTED FROM 100% IMPORTED WOOL**

---

Hand-knotted rugs are, by definition unique and Hilary's do not disappoint. Completely woven by hand out of 100% imported wool these gorgeous rugs may have traditional patterns but in on-trend vibrant colors. The Knotted Earth collection is produced using vegetable dyed yarns which are spun from 100% imported wool. Each rug is then intentionally distressed adding to the antique look and feel of this collection. Opened backed, latex free and serged by hand – these rugs will provide a lifetime of natural beauty and are sure to become a family heirloom.

---

**INDOOR USE ONLY, HAND SERGED AND FINISHED  
HAND-KNOTTED IN INDIA FROM 100% IMPORTED WOOL  
LATEX FREE OPEN BACKED, EASY TO CLEAN AND CARE FOR**

---

**2'0" x 3'0"**  
**4'0" x 6'0"**

**5'6" x 8'6"**  
**8'0" x 10'0"**  
**9'0" x 12'0"**

**10'0" x 14'0"**  
**CUSTOM SIZES AVAILABLE**

**HILARYFARR** | **DESIGNS**







**KNOTTED EARTH / Indoor**



**HKE01-38** | Charcoal



**HKE02-22** | Navy



**HKE03-92** | Pink

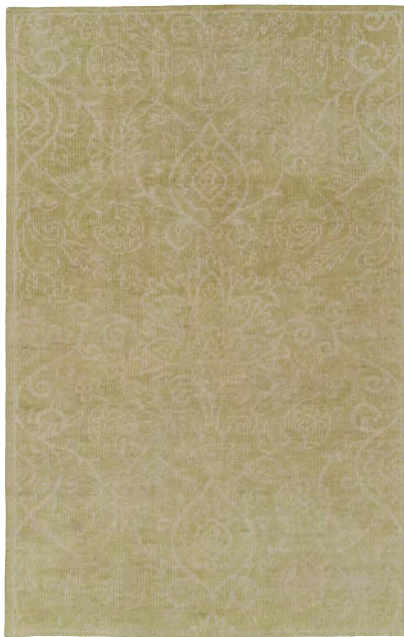


**HKE04-60** | Mocha





**HKE05-79** | Light Blue



**HKE06-72** | Maize



**HKE06-88** | Mint



**KNOTTED EARTH / Indoor**



**HKE07-01** | Ivory



**HKE07-17** | Blue



**HKE08-49** | Brown



**HKE09-49** | Brown





Hifary



# Peranakan Tile

## COLLECTION

**HAND-TUFTED FROM 100% P.E.T. POLYESTER**

---

Hilary has a profound love of history and the styles and trends it has produced throughout time. The Peranakan Tile collection pulls inspiration from the colorful and decorative vintage tiles of Singapore's past. Kaleen's special UV protective treatment makes this collection completely versatile – the perfect choice to add a pop of color to your patio, porch or indoor living spaces. These hand-tufted rugs are not only beautiful, but also good for the environment as they are woven from 100% P.E.T Polyester yarn which is spun from fibers made out of recycled plastic bottles. Each of these single pile rugs is serged by hand and finished with Kaleen's signature anti-skid backing.

---

**INDOOR/OUTDOOR USE, UV-STABILIZED, FADE & HEAT RESISTANT**  
**HAND-TUFTED & FINISHED FROM 100% P.E.T POLYESTER IN INDIA**  
**FEATURES KALEEN'S NON-SKID BACKING FOR EXTRA SAFETY**

---

**2'0" x 3'0"**  
**2'0" x 6'0"**  
**5'0" x 8'0"**

**5'9" x 5'9" RD**  
**7'9" x 7'9" RD**

**8'0" x 10'6"**  
**9'6" x 13'0"**  
**CUSTOM SIZES AVAILABLE**

**HILARYFARR** | **DESIGNS**

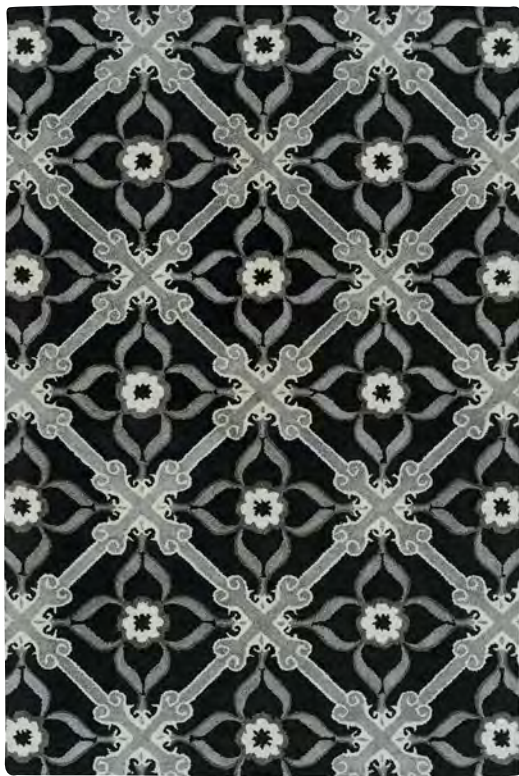




HPT01-02



PERANAKAN TILE / Indoor/Outdoor



HPT01-02 | Black



HPT01-10 | Denim



HPT01-56 | Spa



HPT01-75 | Grey





Hifary



PERNAKAN TILE / Indoor/Outdoor



HPT02-25 | Red



HPT02-59 | Sage



HPT02-75 | Grey



HPT03-05 | Gold





HPT03-25 | Red



HPT03-75 | Grey



HPT03-79 | Light Blue