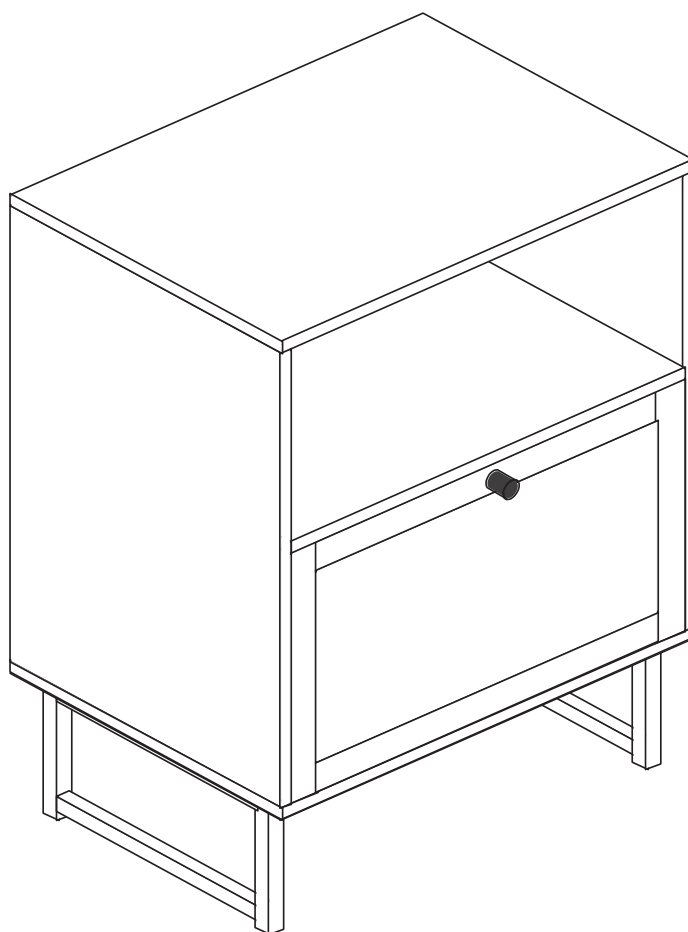


Let's build the

Mina Side Table

SKU 33201



Scan me!

Free Lifetime
Warranty

nathan james

23-1229-VN

Ok, let's get rolling

This should be easy, just follow our instructions and you will be back to Netflix in no time.

Estimated time for assembly



40:00

What you need

- Some of your favourite bubbly or your preferred relaxant
- Use the packaging carton as a working surface to prevent product damage during assembly
- Phillips head screwdriver (#2)

Do not use a drill



Weight Limitation



90

lbs table top

30

lbs per shelf

Toll-free at 1-866-619-1004
Help@nathanjames.com
Nathanjames.com/help

What's included

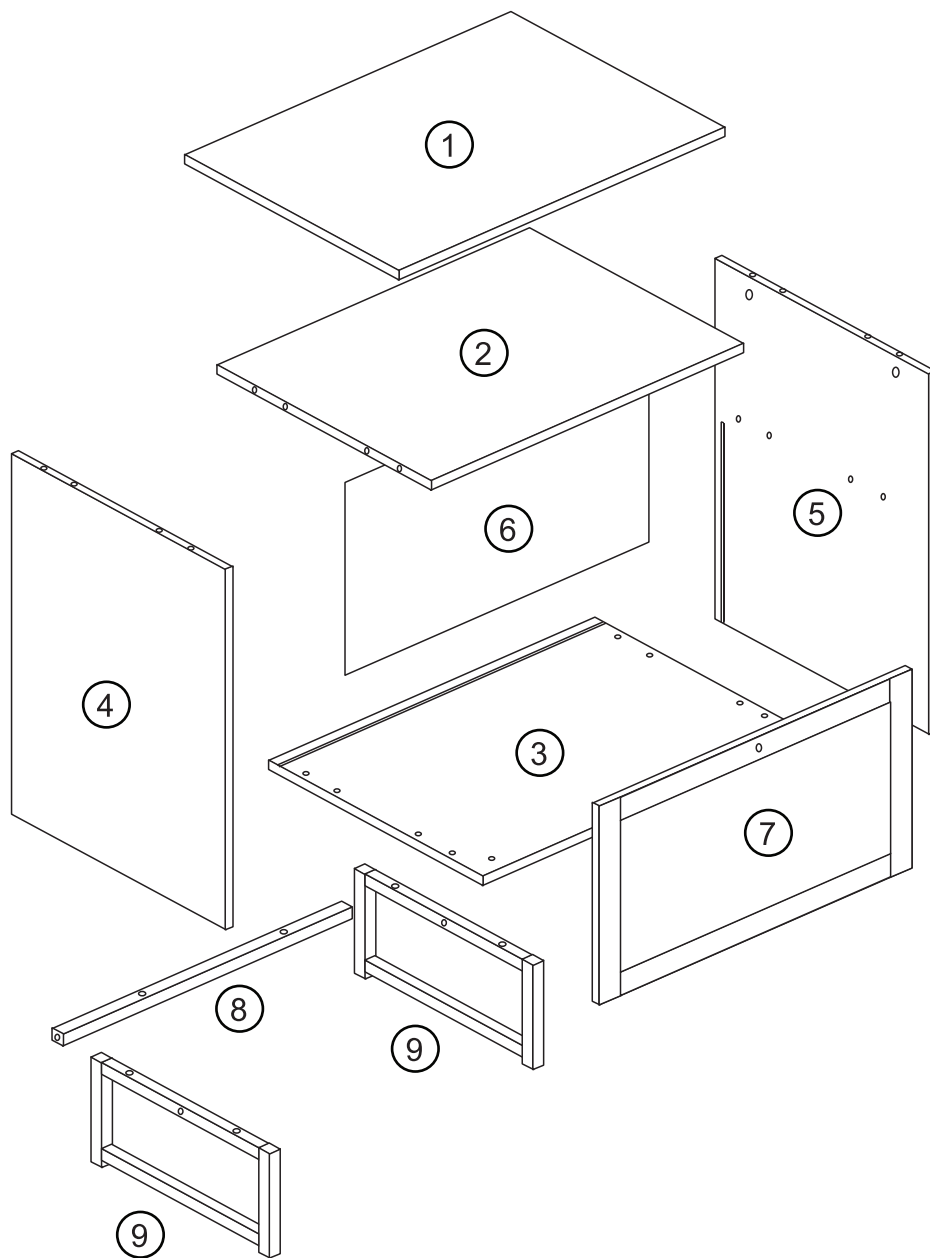
Description		Qty
1	Top Panel	1
2	Shelf	1
3	Bottom Panel	1
4	Left Side Panel	1
5	Right Side Panel	1
6	Back Panel	1
7	Door	1
8	Metal Stretcher	1
9	Metal Side Frame	2

Scan me!

Free Lifetime
Warranty



The goods



IMPORTANT

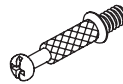
1. Do not tighten bolts / screws completely until all bolts / screws are lined up and inserted into holes.
2. Do not over tighten screws and bolts to avoid stripping.
3. Please use hand tools to assemble this product. Do not use power tools.

What's included

Description		Qty
A	M6*35 mm Cam Bolt	8
B	15*9.5 mm Cam Lock	8
C	M6*30 mm Wood Dowel	12
D	M4*35 mm Screw	4
E	Magnetic Door Catch & Plate	1
F	M3*12 mm Screw	1
G	Metal Pin Hinge	2
H	M3*14 mm Screw	6
I	Handle	1
J	M6*28mm Bolt	8
K	Allen Key	1
L	M4*16mm Bolt	1
M	PVC Sticker	4

The goods

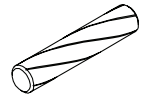
A



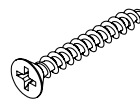
B



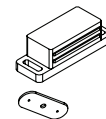
C



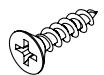
D



E



F



G



H



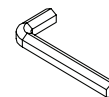
I



J



K



L



M

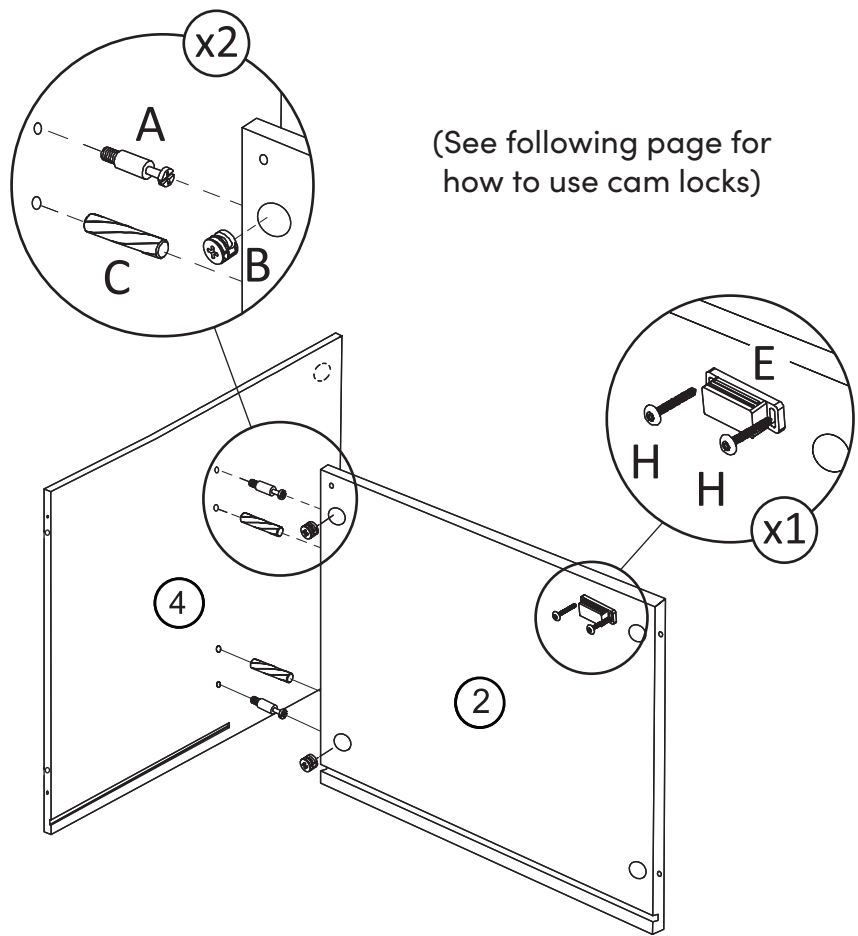


Step 1

Let's get this thing fired up!

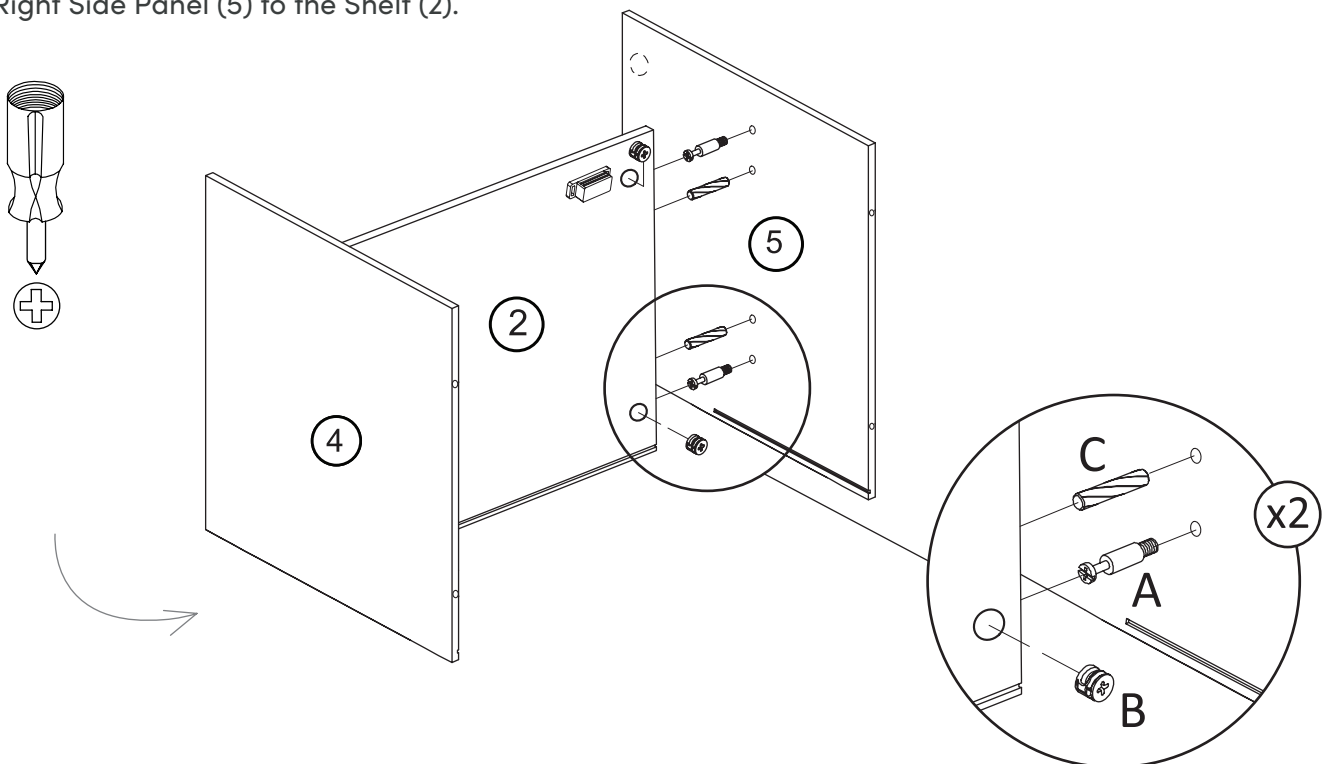
Insert the Wood Dowels (C) and Cam Bolts (A) into the Left Side Panel (4). Then secure the Shelf (2) to the Left Side Panel (4) using the Cam Locks (B).

While we're at it, secure the Magnetic Door Catch (E) to the Shelf (2) using two (H) Screws.



Step 2

Repeat the same steps to secure the Right Side Panel (5) to the Shelf (2).



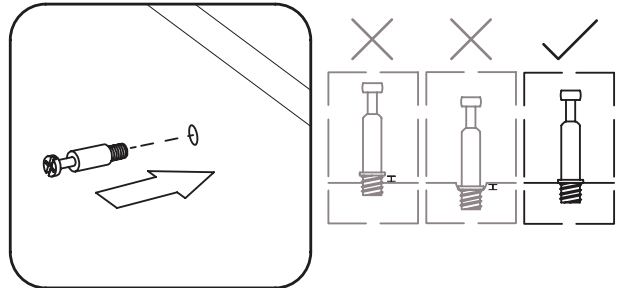
How to use cam locks

Did you know?

Cam locks are used to join two panels together, usually the edge of one to the flat side of another.

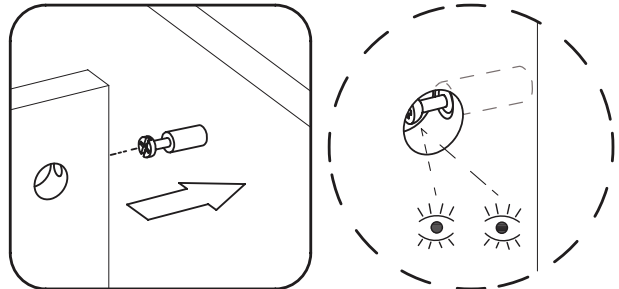
First, your cam bolt (or cam pin) will need to be properly inserted into the flat side of the board.

Important Note: Only tighten the cam bolt until it is secure. Do not over-tighten.



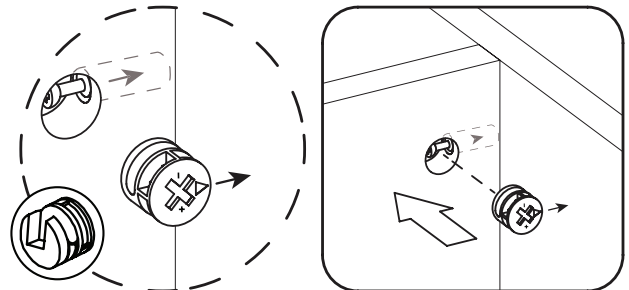
Next, you will fit the proper hole on the edge of the associated joining panel over the cam bolt.

Important Note: When installed properly, the head of the cam bolt will be visible through the larger hole on the side of the joining panel.



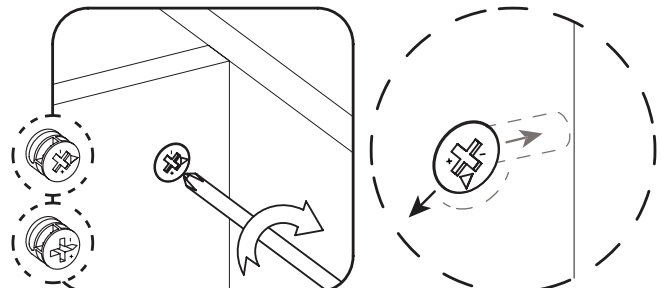
Next, you will notice the cam lock has a "C" shaped back. Commonly, an arrow on the front of the cam lock points in the same direction as the open section on back.

Using these as your cue, insert the cam lock into the large hole so the opening of the "C" fits over the head of the cam bolt.



Using a screwdriver, you will turn the cam lock until it stops, usually between 130° or 180°. You will feel the panels pulling closer until they are secured.

Important Note: Only turn the cam lock until the panels are fully engaged & feel secure. Turning too far may lead to hardware failure.



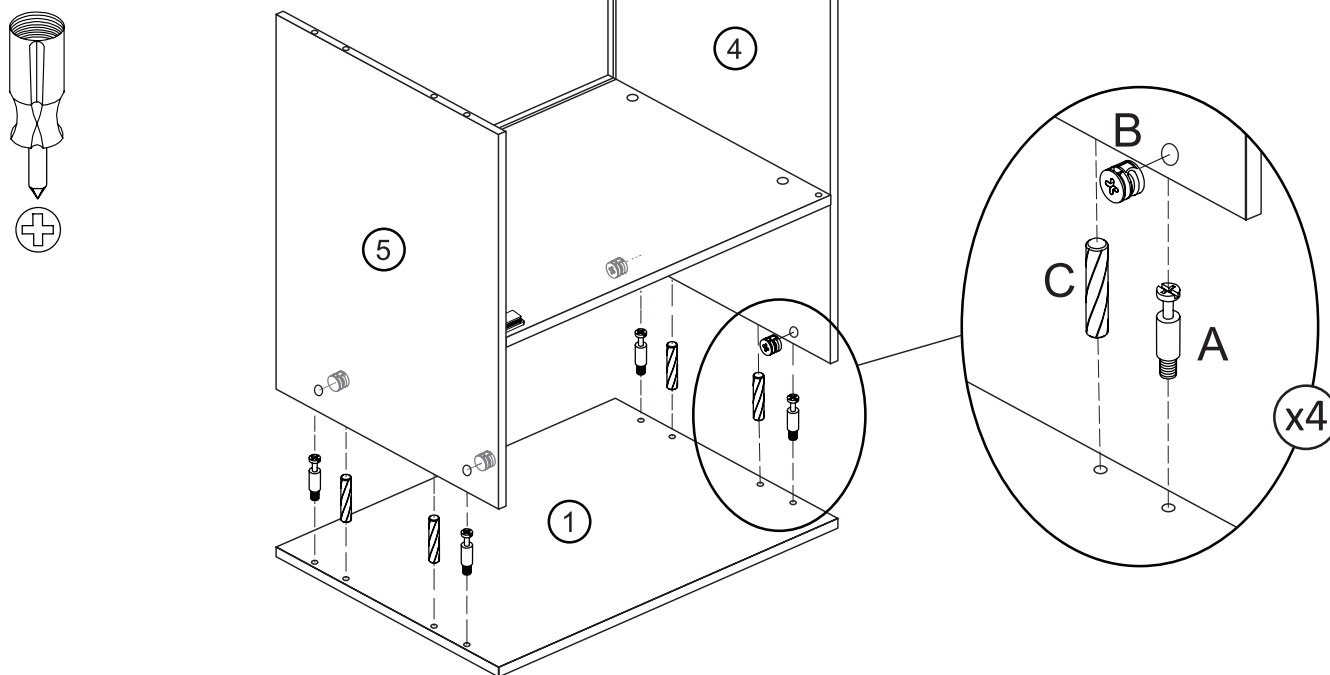
Still having issues?

If a cam lock seems to be spinning in place or is not "catching" or pulling the panels together as expected, first remove the cam lock & try again while making sure that everything is properly positioned & oriented.

If you are still having issues getting things working as expected, first remove the cam lock then unscrew the cam bolt slightly (less than 1 complete turn) to see if that helps with the alignment of the cam lock & bolt.

Step 3

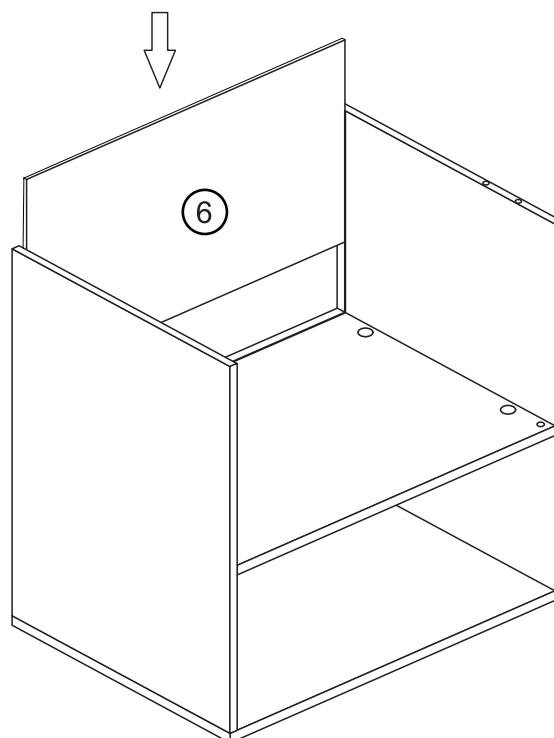
Now insert the Wood Dowels (C) and Cam Bolts into the Top Panel (1). Then secure everything from Step 2 to the Top Panel (1) with Cam Locks (B).



Step 4

Slide in the Back Panel (6).

Stay strong, you're halfway there!

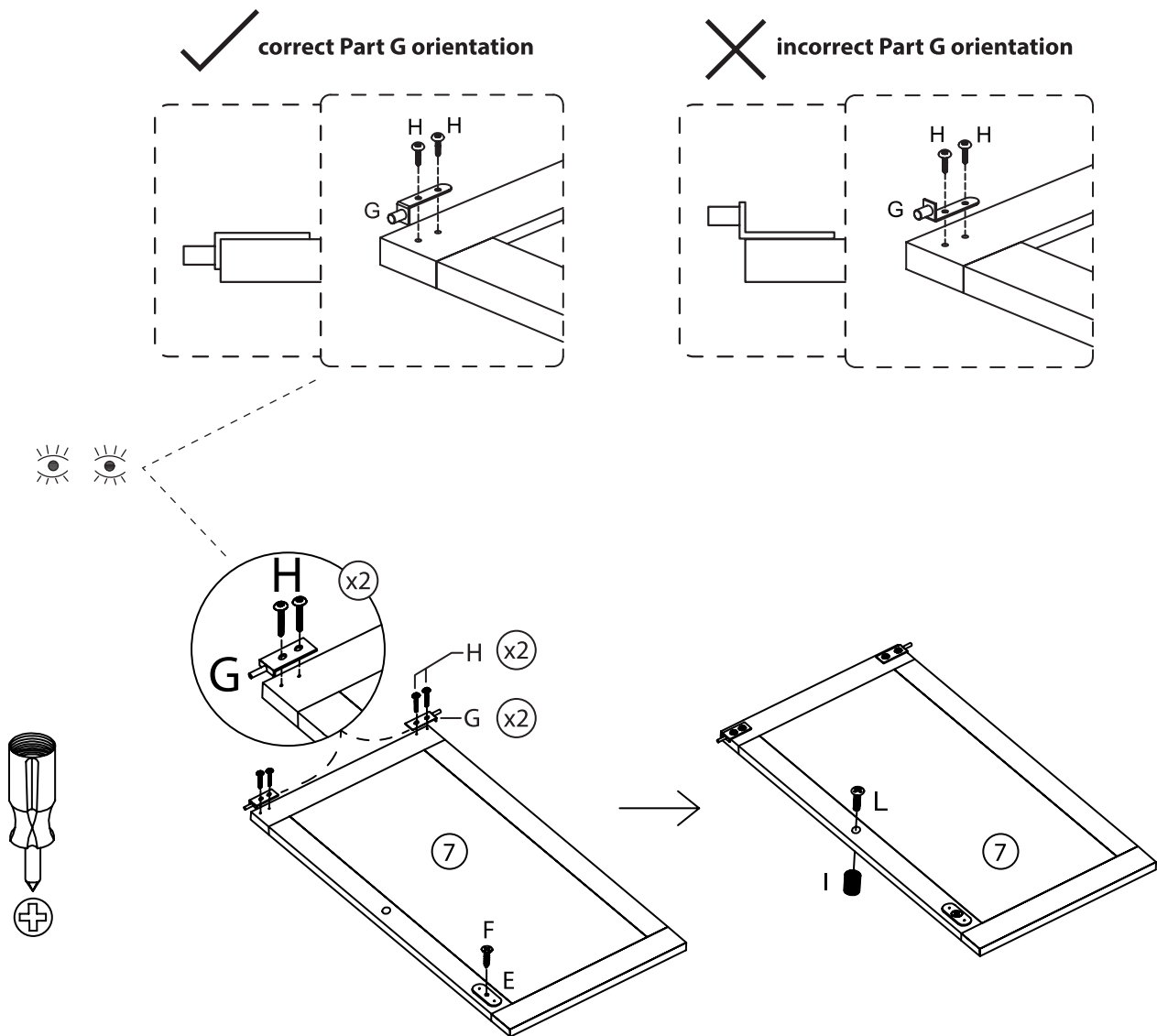


Step 5

Time to work on the door!

First, install the Metal Pin Hinges (G) onto the Door (7) using the M3*14mm Screws (H). Then install the Magnetic Plate (E) with the M3*12mm Screw (F).

Finally, install the Handle (I) onto the Door (7) using the M4*16mm Bolt (L).



If your door does not seem to be opening or closing properly, please double-check that your Part G – Metal Pin Hinges are installed in the proper orientation.

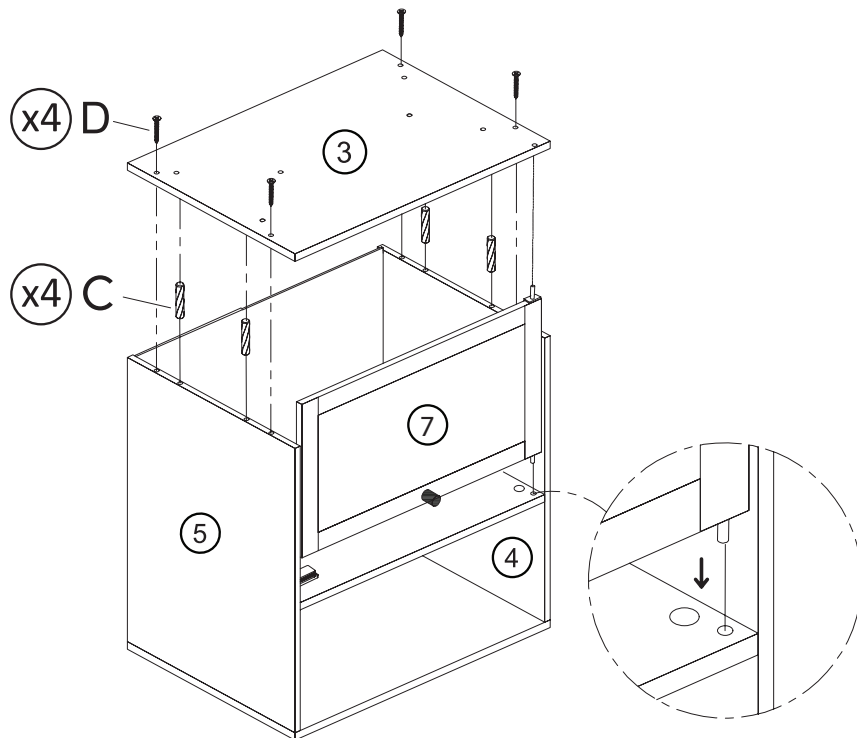
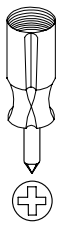
See   graphics above detailing the proper orientation for these components.

Step 6

Insert the Wood Dowels (C) into the ends of the Left Side Panel (4) and Right Side Panel (5).

Prior to putting the Bottom Panel (3) into place, line up the Metal Pin Hinges (G) on the Door (7) with the holes on the Shelf (2) and Bottom Panel (3).

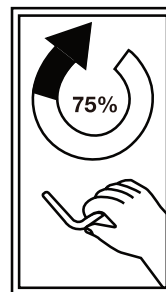
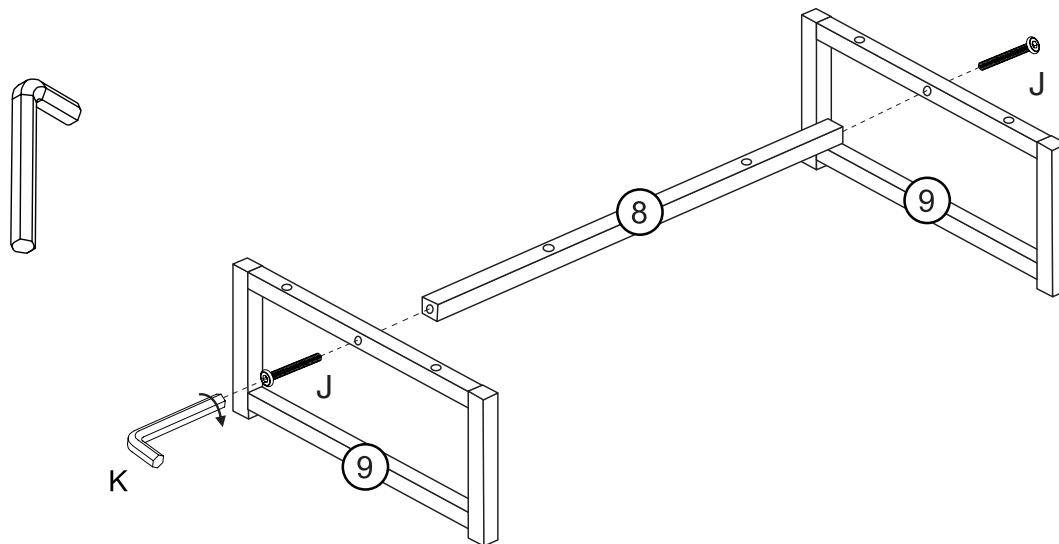
Then secure the Bottom Panel (3) with the Wood Screws (D).



Step 7

Don't be too eager...wait to fully tighten.

Loosely attach the Metal Stretcher (8) to the Metal Side Frames (9) using two ¼*28 mm Bolts (J).

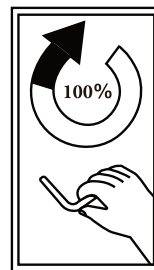
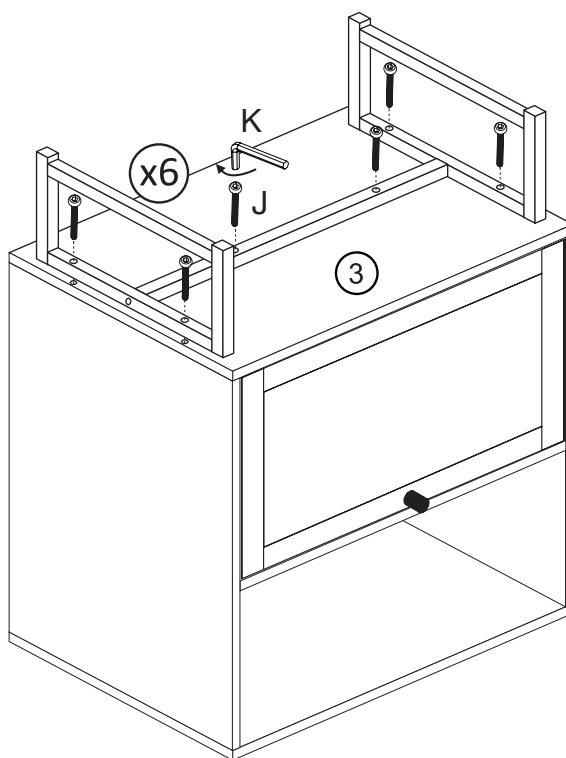
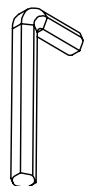


Step 8

Just a few more steps!

First, position the base in place. By hand, fasten all six ¼*28 mm Bolts (J) into their respective holes.

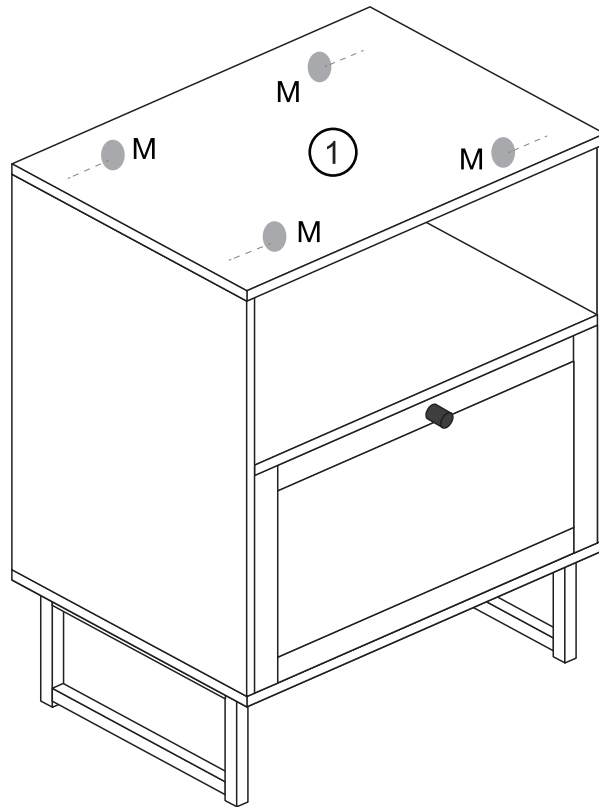
Once things are aligned, tighten all of the bolts using the Allen Key (K), including those from Step 6.



Step 9

Cover the visible Cam Locks using the PVC Stickers (M).

Ta-da! You dit it! Time to order a celebratory pizza?



No heartburn, when we handle the return

Give us a call **1-866-619-1004** or shoot us a message at **help@nathanjames.com** we will issue you a free replacement with **zero hassle**.

Our way



Give us a call



Replacement



You

Their way



Re-package item



Schedule pick up



Track package



Replacement



You

We really don't want you to go through the hassle of re-packaging your item and sending it back, because let's be honest...nobody has time for that.

Safety first, fun later

We want your Mina Side Table to last as long as possible, so we recommend that you tighten the screws 2 weeks after assembly and for added safety check the tightness of all screws every 2 months.

For proper care and treatment of wood & metal please check our website at NathanJames.com/products

Safe use of this product starts with you.

Use this Mina Side Table responsibly with the primary concern for your safety. Follow assembly instructions carefully and inspect product upon receipt and each use.

Nathan James and its parent companies cannot be held legally responsible for any injuries or death resulted from failure to follow instructions or improper use of this product.

Do not modify the structure of this product in any way.

Our products have been tested to meet specific safety measures as they were originally intended to be sold. Any modifications will present the risk of creating significant safety issues which NJ will not be responsible for.

Proper use

- | | |
|---------------|--|
| DO NOT | use for commercial purposes |
| DO NOT | climb on side table |
| DO NOT | exceed weight limit |
| DO NOT | leave spilled liquid on side table |
| DO NOT | use if side table is damaged or broken |
| DO NOT | make temporary repairs |
| DO NOT | use outdoors |

We are only in business if you're happy

For starters, thanks for being you.

☎ Toll-free at 1-866-619-1004

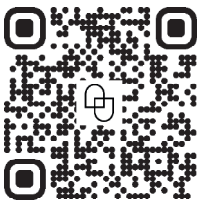
✉ Help@nathanjames.com

🌐 NathanJames.com/help

We do our best to ensure your furniture arrives without any problems, but occasionally mistakes happen—as humans we are imperfect beings. In the event that a part is damaged or missing, we will be more than happy to provide you with replacement part(s) for free.

Warranty

This product comes with a lifetime warranty from the date of purchase. Please use your phone to scan the QR code to register your product or visit <https://goo.gl/i9dk3q>



Did we do alright? Please spread the love!

If you are happy with your product, tell your friends and family about us or even better leave us a review online. Spreading the word gives us the opportunity to make more people happy and keep our prices low for your next purchase.

Brooklyn Burdon

Founder, Nathan James