

#### USE AND MAINTENANCE

Use on level surfaces only

Because this product needs assembly, it is prone to working itself loose from time to time depending on the use. Please take the time to check that all connections are still tight and working properly

Only clean using a damp cloth and mild detergent, do not use bleach or abrasive cleaners.

## Harper Wall-Mounted Whiteboard

### PART LIST



1 - Long Board Frame x 2



2 - Short Board Frame x 2



3 - Anchors x 4

### HARDWARE

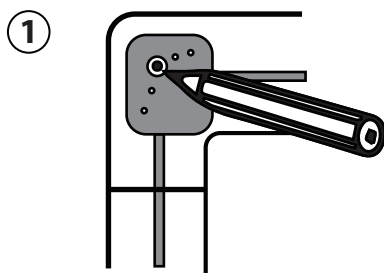


A - Screws x4

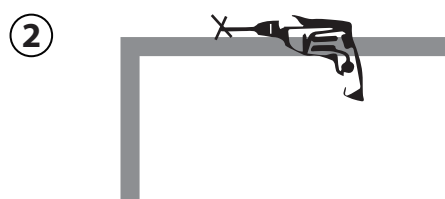


B - Plastic Corner Caps x4

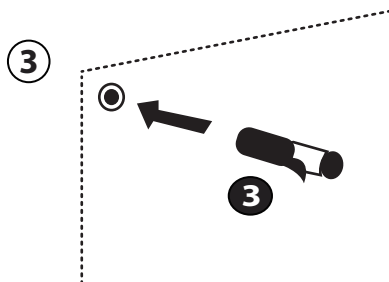
### Assembly Instructions



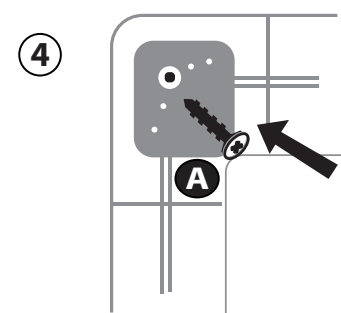
1. Make the marks where you drill the pilot hole in the wall.



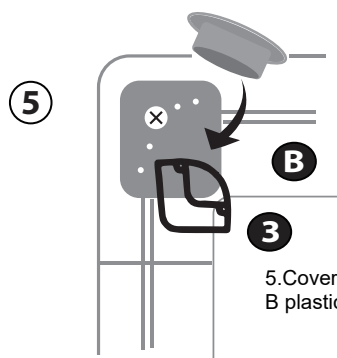
2. Drill pilot holes in the wall.



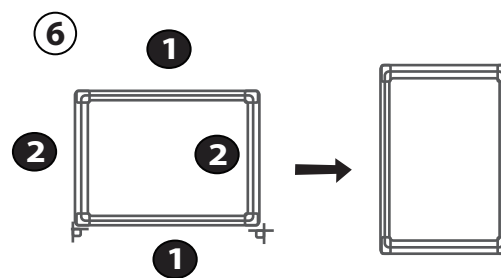
3. Insert 3 plastic anchors x 4 into the holes until each anchor head is flush to the wall surface.



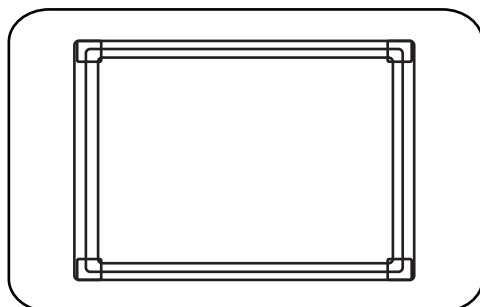
4. Insert wall A screws x 4 through the holes of boards corners and into the plastic anchors into the wall.



5. Cover the holes with four B plastic corner caps.



6. Attach the marker tray onto the bottom of the lower board frame. (According to your way of the whiteboard installation)



Congratulations! Setup of your new Naomi Home Harper Wall-Mounted Whiteboard is Complete!