

NOTICE

- * Please make sure that you have all parts indicated and they are in good condition before you begin assembly of this item. Refer to part list and hardware list below for guidance.
- * This item should be assembled on soft surface to prevent scratching the finish during assembly.
- * This item may require periodic tightening.
- * If you are having difficulty, our friendly Customer Care team is always here to help. Please email customersupport@safavieh.com

PREPARATION

- * Before beginning assembly of product, make sure all parts are present. Compare parts with package contents list and hardware content list.
- * If any part is missing or damaged, do not attempt to assemble the product.
- * Estimated Assembly Time : 10 minutes
- * Tools Required for Assembly (included) : Allen Key

CARE AND MAINTENANCE

Spot clean using a mild water-free solvent. Only a professional cleaner should undertake a complete overall cleaning.
The use of steam or water-based cleaners may cause excessive shrinking or staining.



Model #NST4005C

Product Dimensions : 18.5" x 17" x 22"



Part List and Hardware List

PIECE	DESCRIPTION	PICTURE	QUANTITY
A	NIGHTSTAND		1X
B	HANDLE		1X
C	Nuts Dia 0.5" x 1"		1X
D	L Key		1X



Weight Capacity : 66 lbs

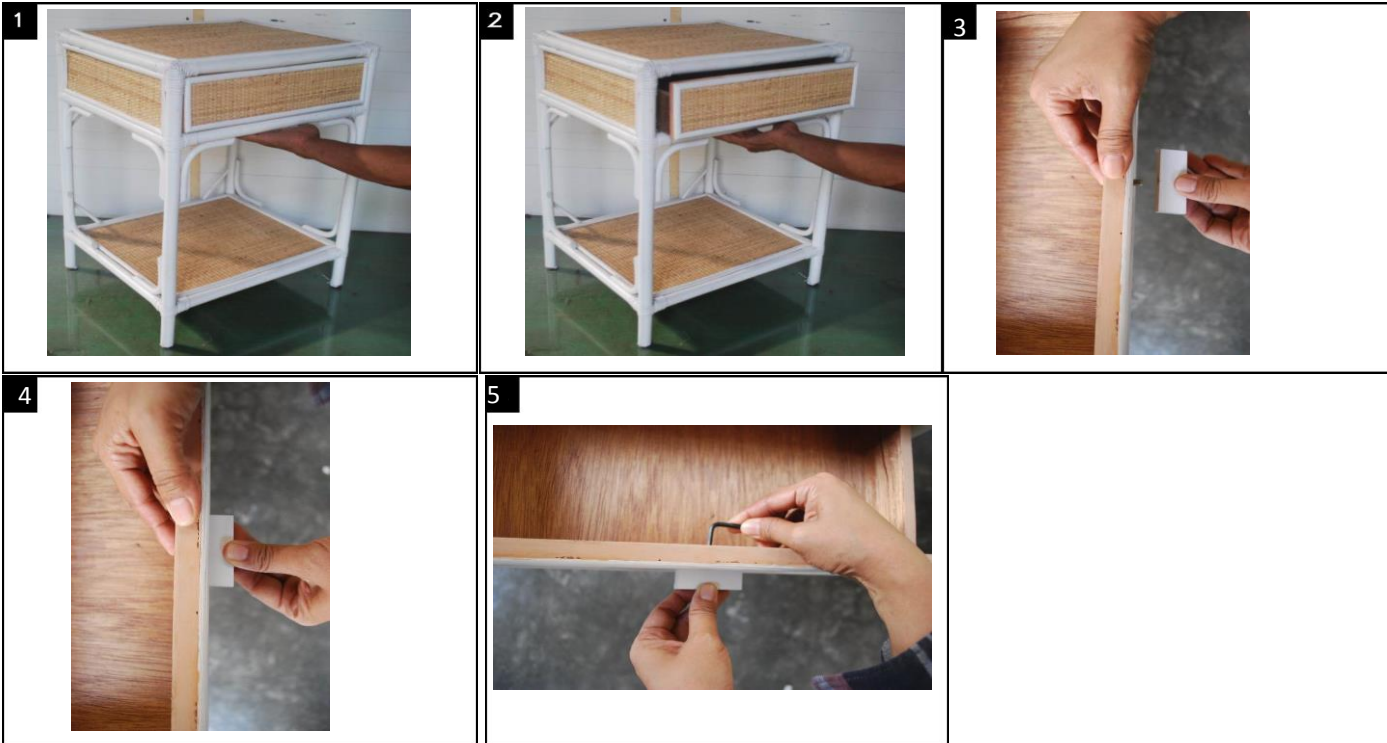
WARNING : DO NOT STAND ON NIGHT STAND TABLE

WARNING : DO NOT OVER TORQUE BOLTS

PREPARATION

- * Before beginning assembly of product, make sure all parts are present. Compare parts with part contents list and hardware content list.
- * If any part is missing or damaged, do not attempt to assemble the product.
- * Estimated Assembly Time : 10 minutes
- * Tools Required for Assembly (included) : Allen Key
- * If you are having difficulty, our friendly Customer Care team is always here to help.
Please email customersupport@safavieh.com

Hardware is located inside the box. You can find them placed near the sign "HARDWARE INCLUDED"



- Step 1 : Put your hand on the bottom of drawer like picture # 1
- Step 2 : Pull the drawer from the bottom until pull out with hand like picture #2
- Step 3 : Insert nuts at hole on front of drawer like picture #3
- Step 4 : Assembly Handle with nuts, than spin off the handle like picture #4
- Step 5 : Tighten the handle from inside like picture #5