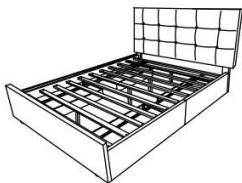


ASSEMBLY INSTRUCTION

WF283777AAA/E/N

WF283778AAA/E/N



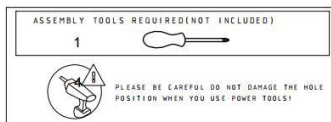
Part list

WF283777AAA/E/N			
No.	Parts	Description	QTY
A		Headboard	1
B		Footboard	1
E		Bed Slats	1
H		Side panel of Drawer box	4
K		Bottom panel of Drawer box	2
J		Foot	2
L		Center Leg	4

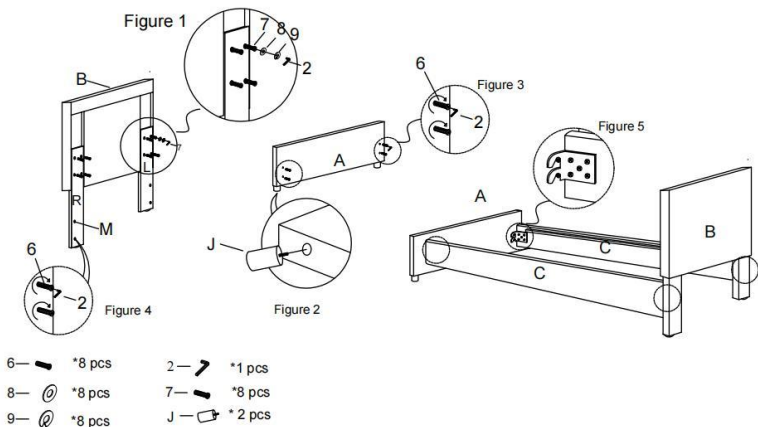
Hardware list

WF283777AAA/E/N			
No.	Parts	Description	QTY
1		Bolt 1/4"×25mm	32
2		Allen Wrench (1/4")	1
3		Wheel	16
4		Wood Screw #8×1"	18
5		Wood Screw #8×5/8"	64
6		Bolt 5/16"×20mm	8
7		Bolt 5/16"×40mm	8
8		5/16" Flat washer	8
9		5/16" Lock washer	8

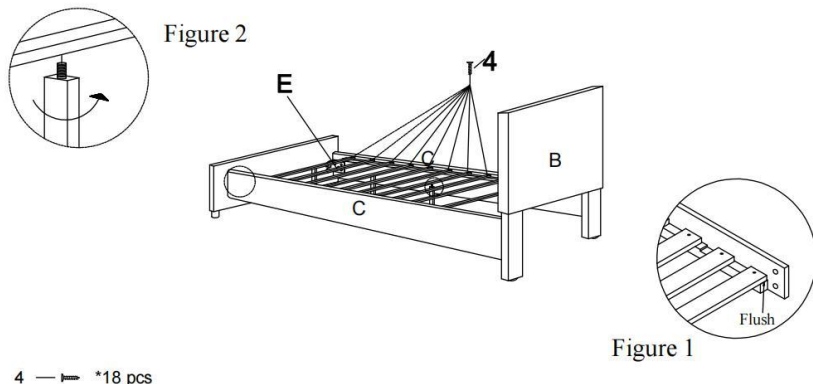
WF283778AAA/E/N			
C		Bed Rail	2
F		Upholstered Front panel of Drawer box	2
G		Back panel of Drawer box	2
M		Right & Left headboard legs	2



- STEP 1:**
1. screw Both Left and Right long feet(M) into the back of headboard with 8 bolt(7), flat washer and Lock washer, tighten with Allen Wrench(2). As show in Figure 1.
 2. Screw two feet into the bottom of footboard, as show in Figure 2.
 3. Screw Bolts (6) into Footboard(A) and Headboard (B). Don't tighten enough and have 1/8" space for next step bedrail as show in Figure 3 & 4.
 4. Hang the Rail onto the Footboard and Headboard with hanging plate. as shown in Figure 5.



- STEP 2:**
1. Put 9 pieces of Bed Slats (E) on the Bed Rails (C).
 2. Install Slat Pack with slats starting and ending flush with the end of the support cleat attached to your bed rails **Figure 1**.
 3. Using Screw driver to tighten 20 Pieces of Wood Screws (4) clockwise as shown.
 4. Install 4 pieces of Center Legs at the bottom of Bed Slats Figure2



STEP 3: 1. Insert bottom panel (K) to slot in one side panel (H) and both back panel (G) and Upholstered Front panel (F). As shown Figure 1.

2. Attach side panel to both front and back panel using bolt (1), tighten with Allen Wrench (2), as shown Figure 2.

3. Attach another side panel (H) to bottom panel (K) and both Upholstered front panel (F) and back panel (G), tighten with Allen Wrench (2) as shown Figure 3.

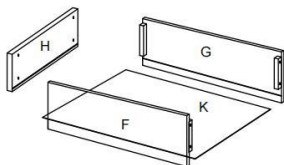


Figure 1

- 1 —  *32 pcs
2 —  *1 pc

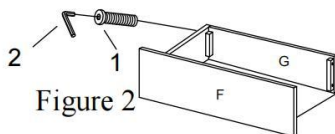


Figure 2

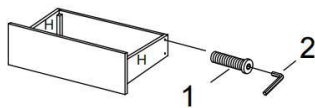


Figure 3

STEP 4: 1. Attach 16 pieces of Wheels (3) to the back side of both drawer boxes with 64 pieces of Wood Screws (5), as shown in figure 1.

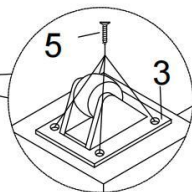
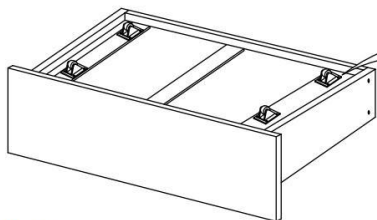


Figure 1

- 3 —  *16 pcs
5 —  *64 pcs

STEP 5: Push the Under Box of bed into the Bed.

