

Shower Set Installation Procedure

Warm tips: This installation instruction is our general shower installation instructions, the structure is intuitive, simple installation, also applicable to the installation of H1107 shower. The video shows the installation of other accessories, can be ignored.

Step 1

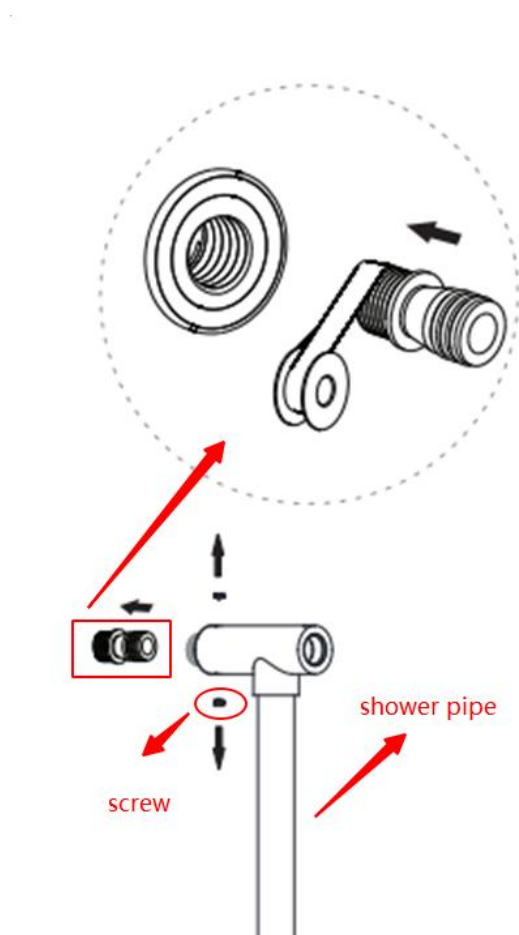
Shut off main water supply before installing new shower set.

Step 2

If you have an old shower head, you can remove the top shower with a wrench and insert a screwdriver into the shower arm tube to remove the shower arm.

Step 3

From the top of the shower pipe, loosen the screws, take out the parts, and proceed to the next step.



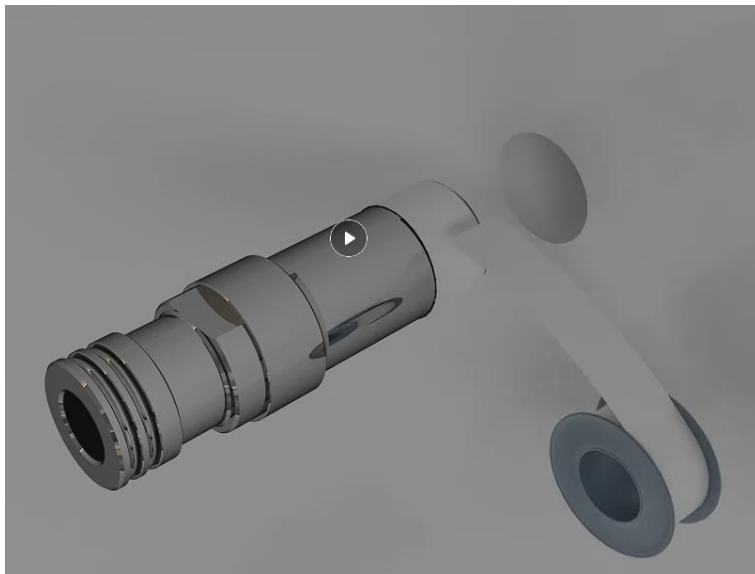
1



Step 4

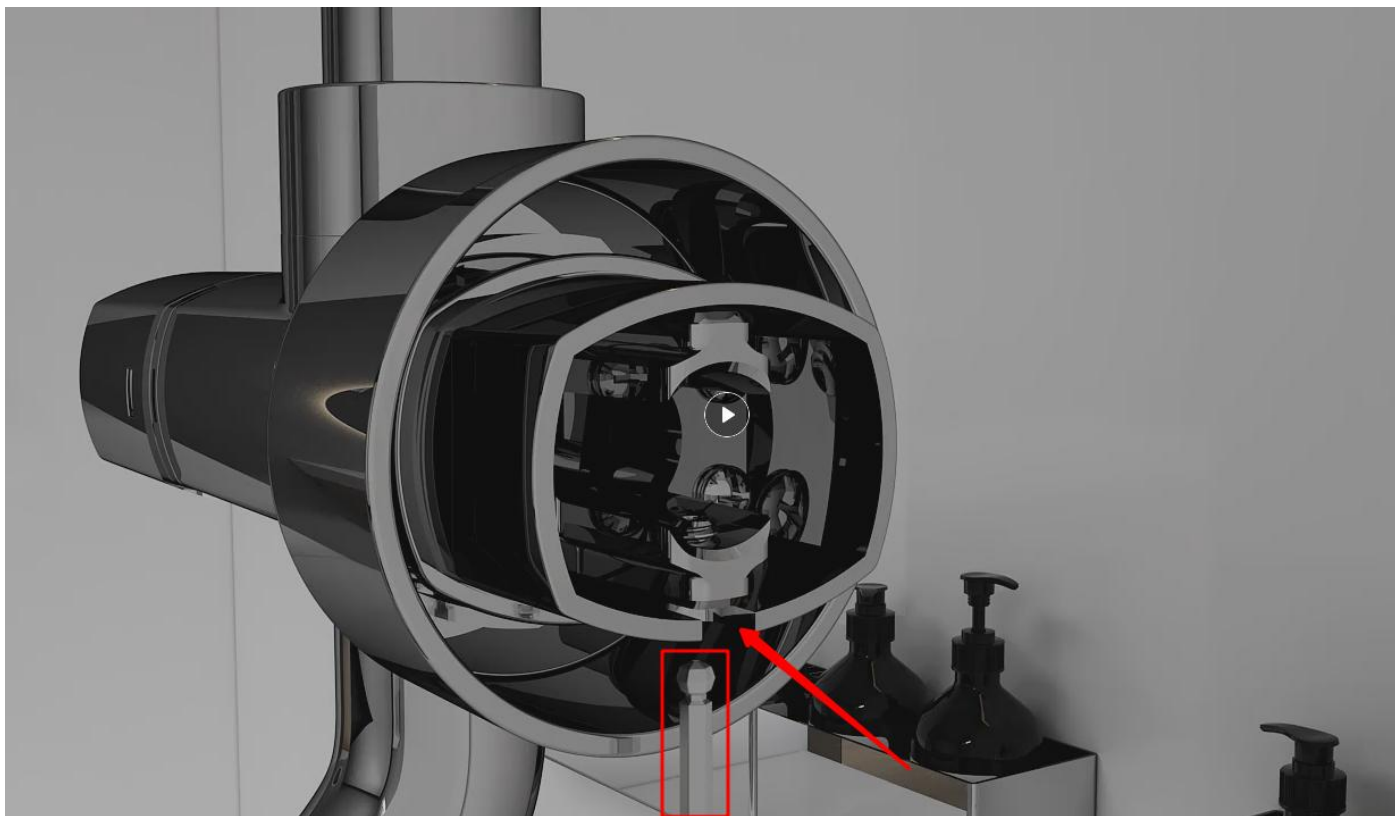
Wrap the threaded end with Teflon tape 2 times.

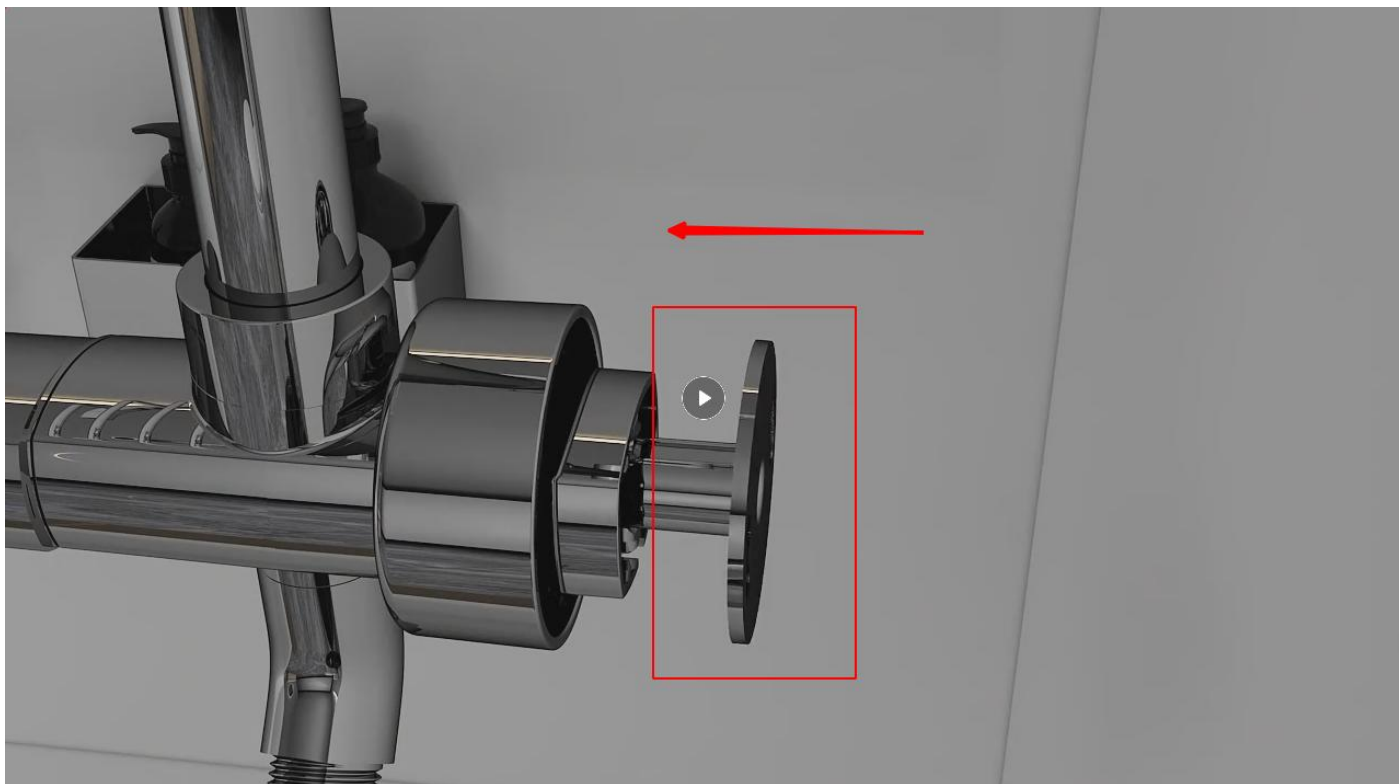
Screw one end of the thread, into the installation hole of the shower arm in a clockwise direction, and tighten it with a wrench.



Step 5

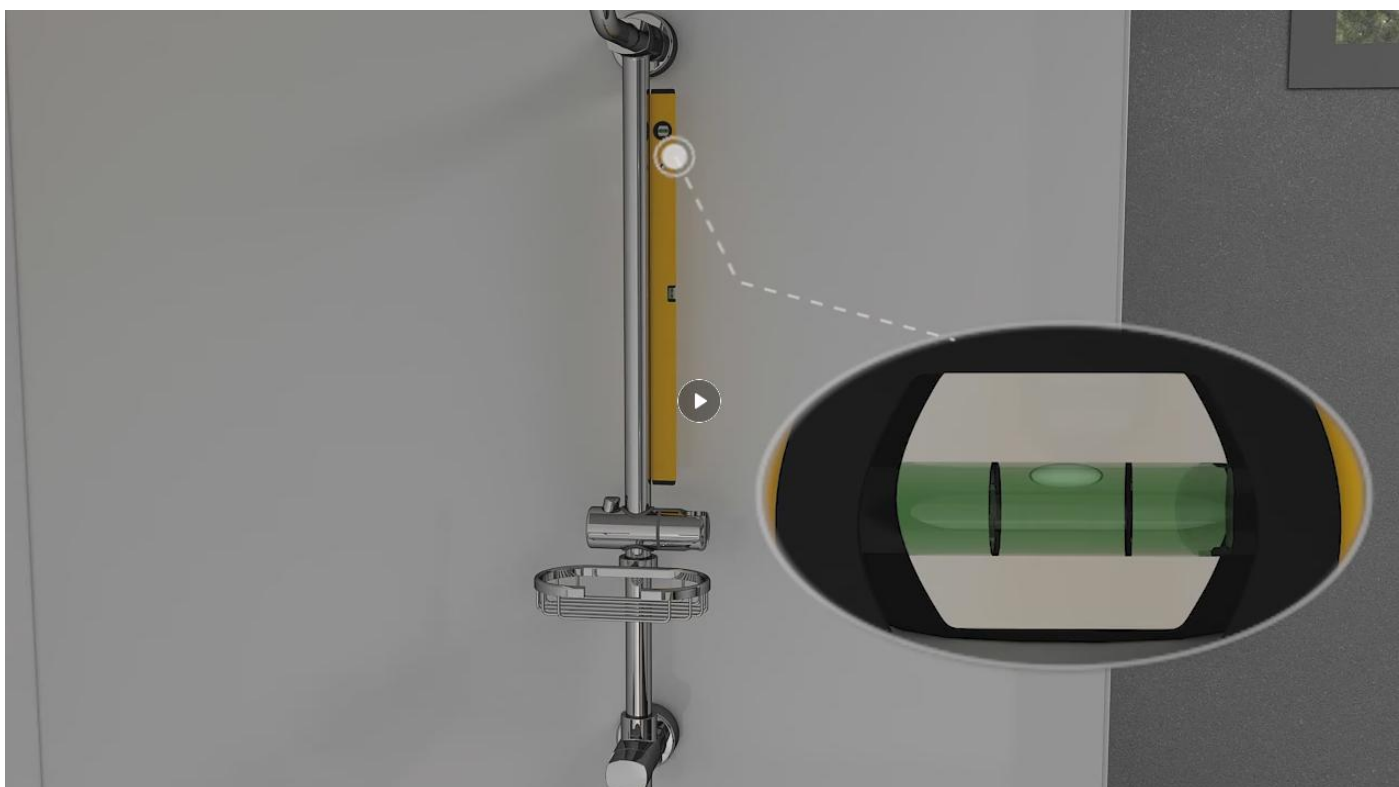
Insert Part in the red box into the corresponding mounting hole of Shower Pipe (if you cannot insert it, you can use a hexagonal wrench to loosen the screw at the corresponding position of Shower Pipe counterclockwise, and then insert it.)

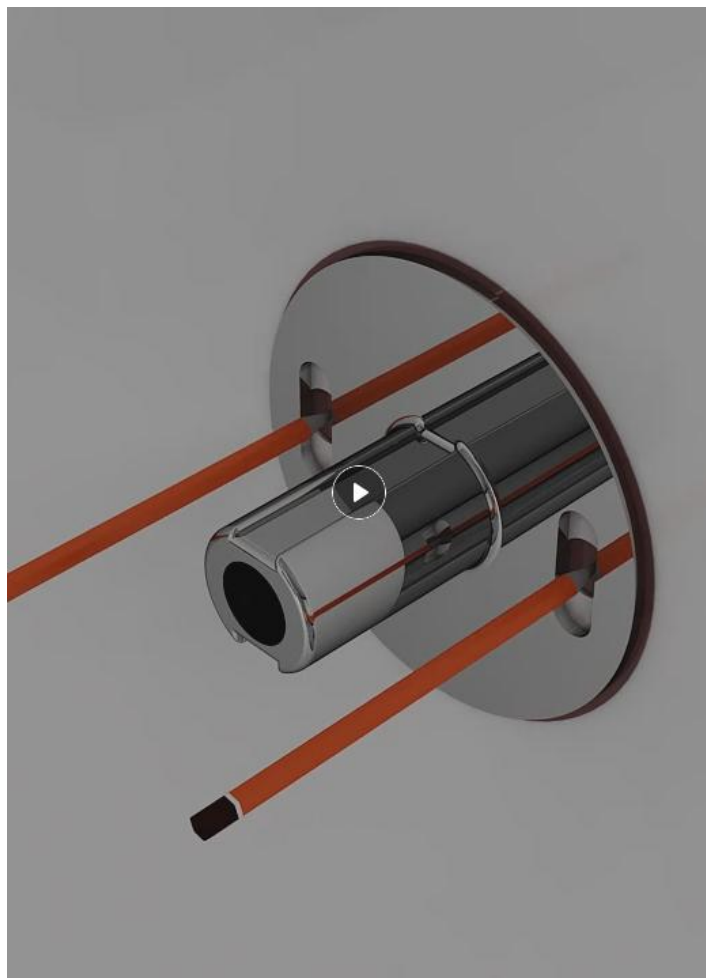




Step 6

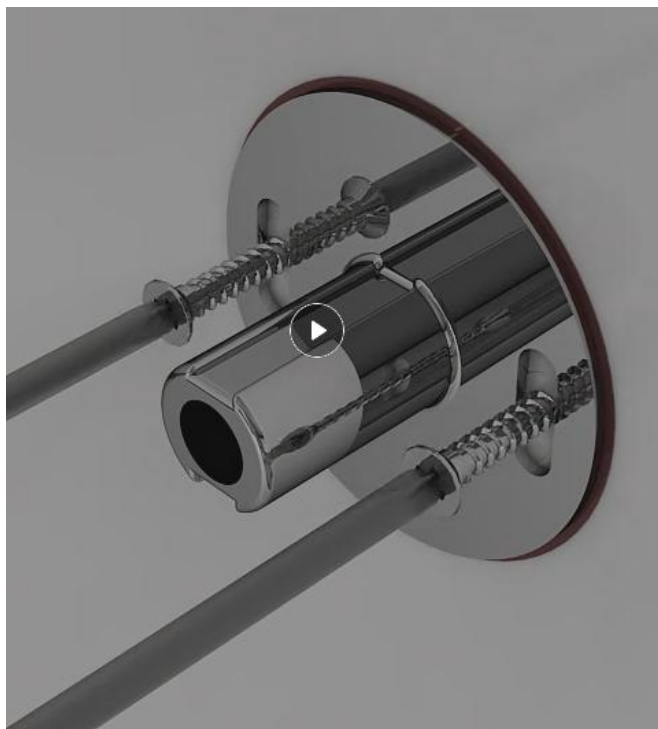
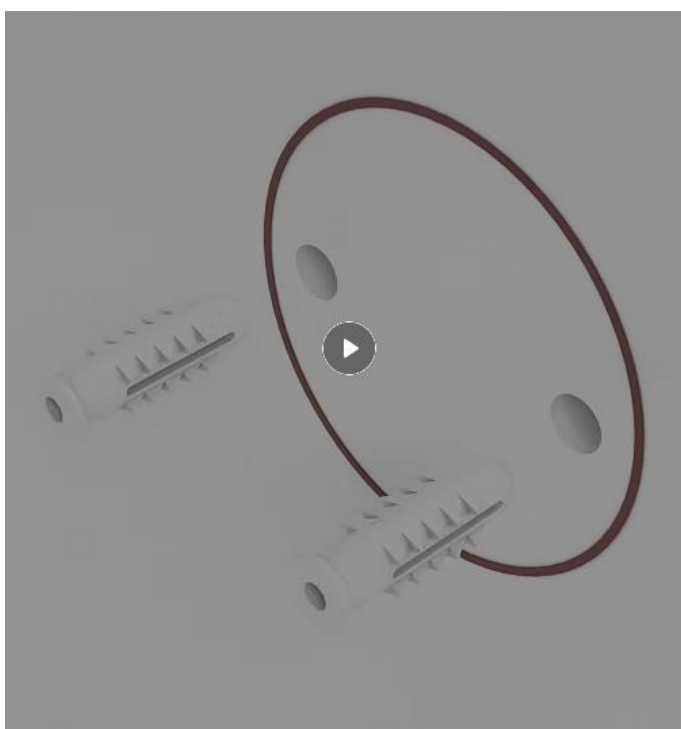
Use a horizontal ruler to find the vertical angle, draw the outline of Part in the red box, and the two screw holes with a pencil, and then remove the entire assembly.





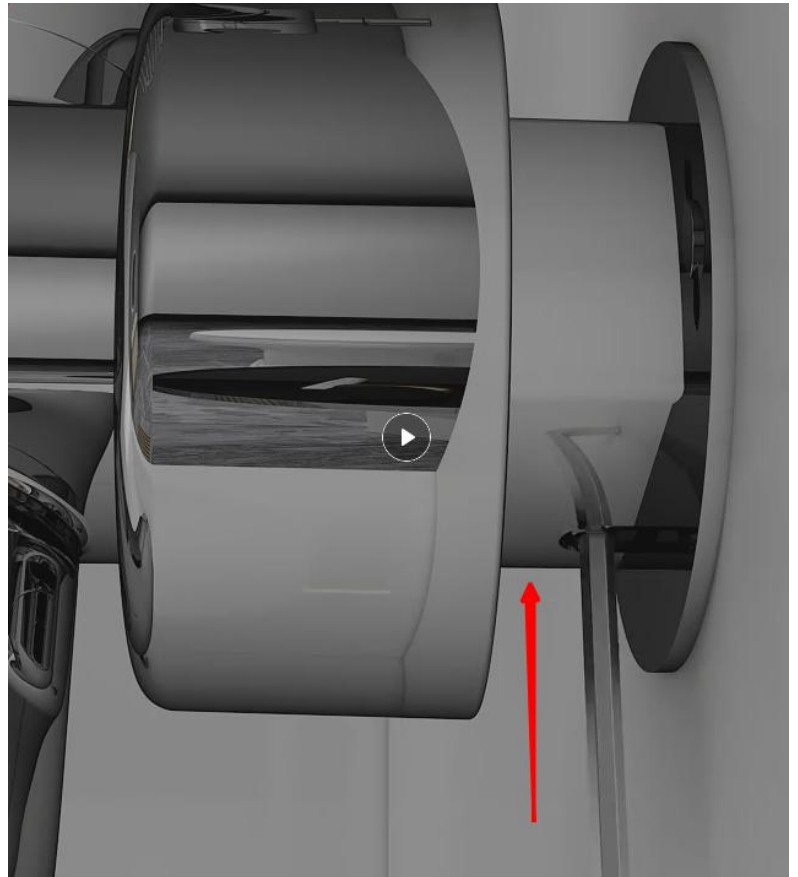
Step 7

Drill a hole, drive the expansion bolt, and tighten the screws.



Step 8

Install the whole product on the wall, push the top and bottom two decorative covers outwards, use a hexagonal wrench to tighten the screws clockwise, and then push the decorative cover back toward the wall.



Step 9

Install other parts of the shower, taking care to check that the shims are placed inside.

