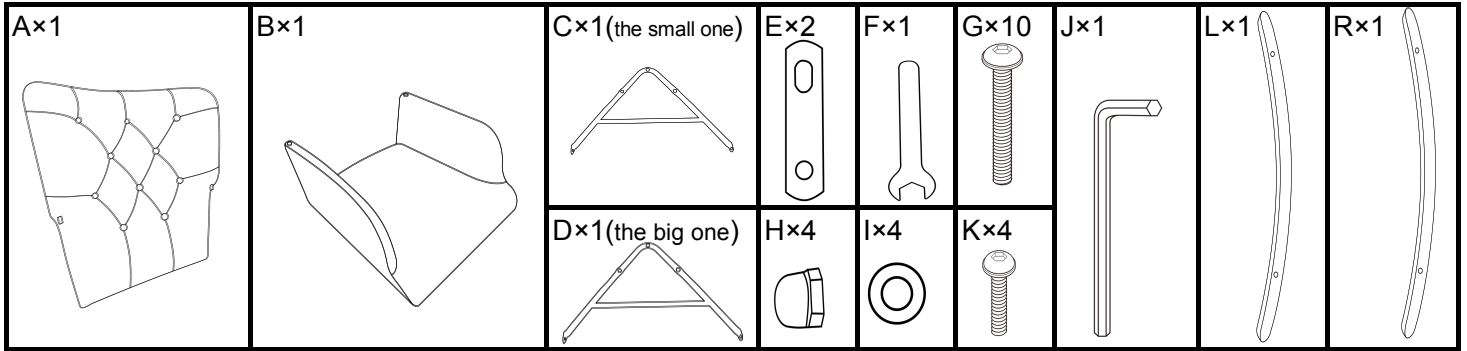
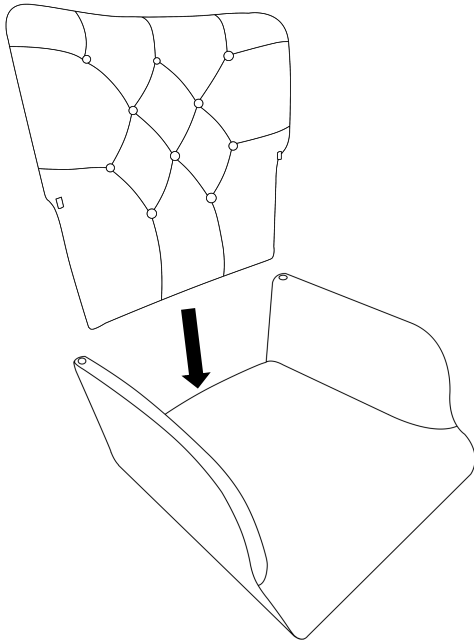


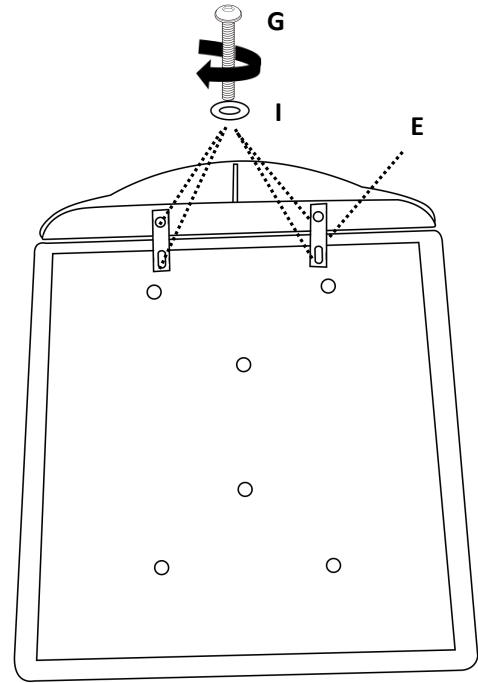
ASSEMBLY INSTRUCTION



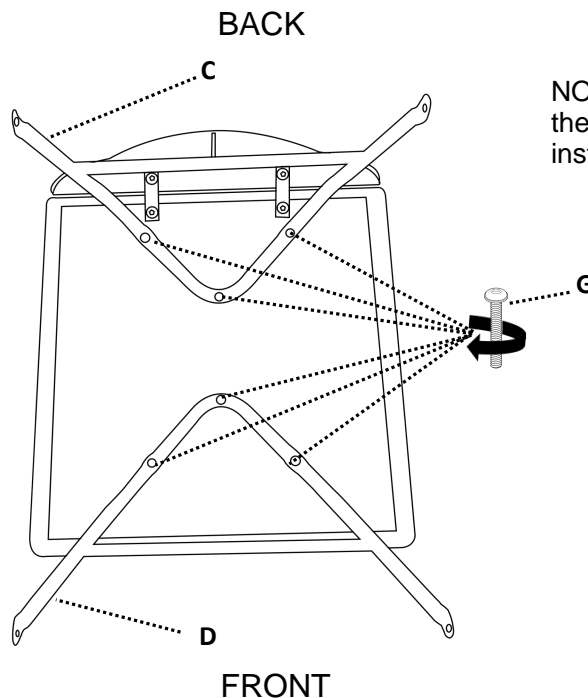
NOTE:G is a longer screw



1.Insert part A into part B as shown.



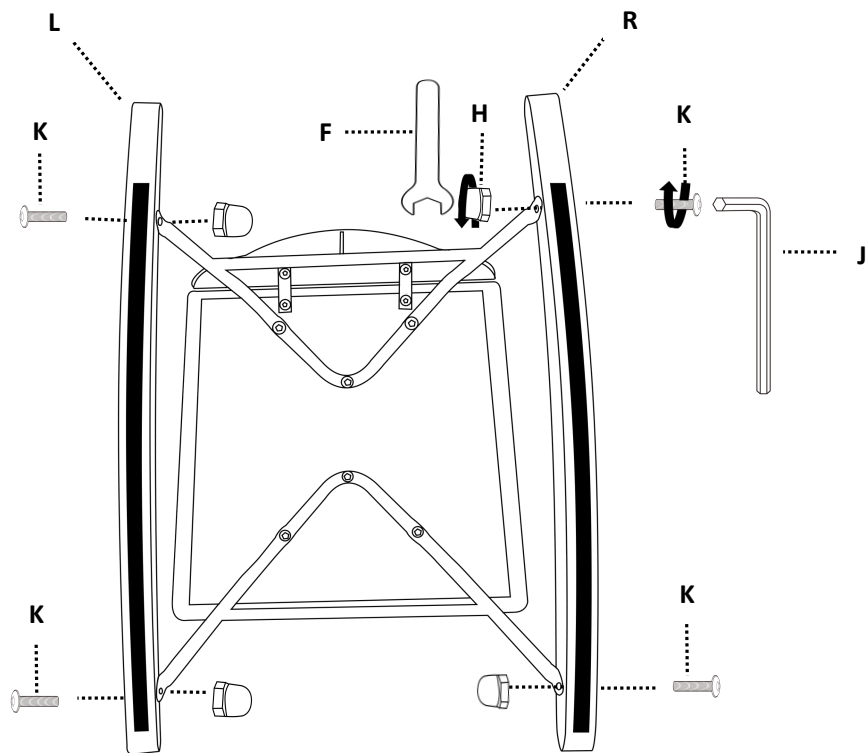
2.Place the bottom of the product upwards and align the holes to install the part A and part B.



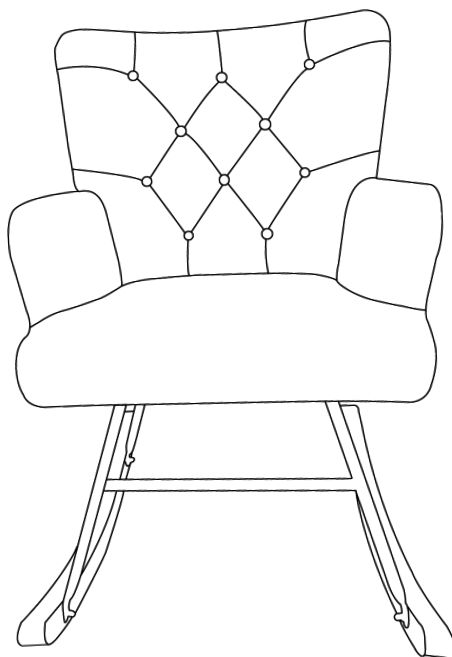
NOTE:The parts C is the small one, the parts D is the big one. Don't install C and D the wrong location.

3.As shown in the figure, Do not tighten the screws until all finish.

NOTE: Don't install fittings L and R the wrong location.



4.As shown in the figure,Do not tighten all the screws at once.



5.FINISH!