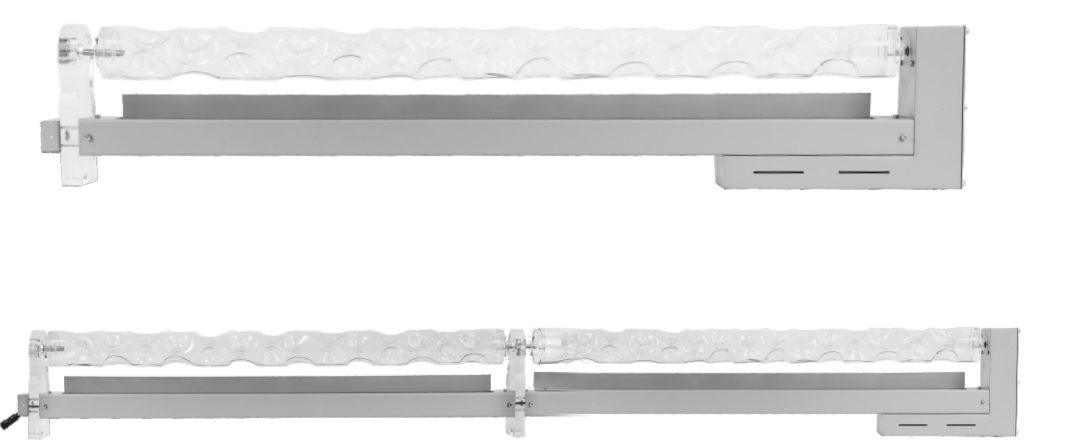


RGBW Ocean Wave Light Instruction Manual



Please read this instruction manual carefully before using the product and keep it properly.

1.Safety Instructions

- 1.This machine is for indoor use only.
- 2.Do not let children use the product as a toy, and please supervise children and pets to keep them away as much as possible when working.
- 3.Do not plug or unplug the power plug with wet hands to avoid the risk of electric shock.
- 4.Do not disassemble, repair or modify this product without authorization.
- 5.The power cord must not be knotted, damaged, squeezed by heavy objects, or modified for use, otherwise it may cause electric shock, short circuit, or fire. If the supply cord is damaged, it must be replaced by the manufacturer or its service center or similar professionals in order to avoid a hazard.
- 6.Unplug the power plug when cleaning.
- 7.Please unplug the power cord during thunderstorms or when not in use for a long time.
- 8.If there is any abnormal phenomenon during the use of the product, please unplug the power cord immediately and contact the after-sales service.

2.Parts List

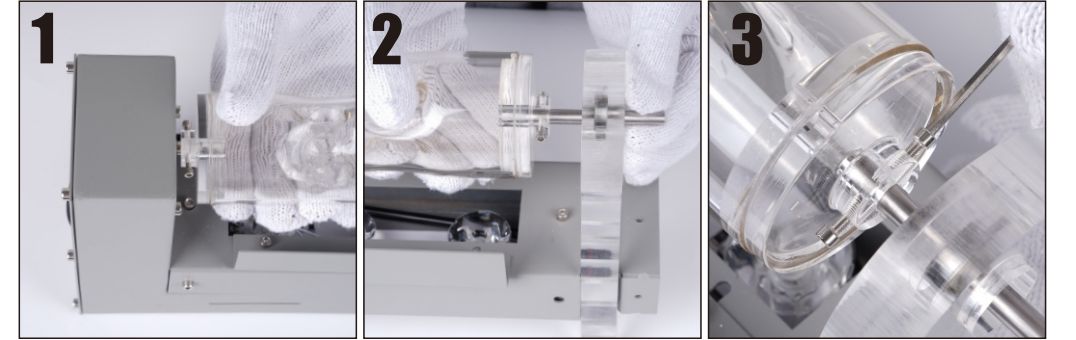
Part Name	Main Machine	Main+Auxiliary Machine
Main Machine Frame	1pcs	1pcs
Auxiliary Machine Frame	*	1pcs
Light Remote Control	1pcs	1pcs
Power Remote Control	1pcs	1pcs
Type M Screw	4pcs(Already pre-installed in the light tube)+2 pcs (replacement screws)	8pcs(Already pre-installed in the light tube)+4 pcs (replacement screws)
Type L Screw	2 pcs (replacement screws)	4pcs+2 pcs (replacement screws)
Light Tube	1pcs	1pcs
Round Bearing	1pcs	2pcs
Type M screwdriver	1pcs	1pcs
Type L screwdriver	1pcs	1pcs

3.Installation Steps

(Please choose A/B steps to install according to the version you purchased.)

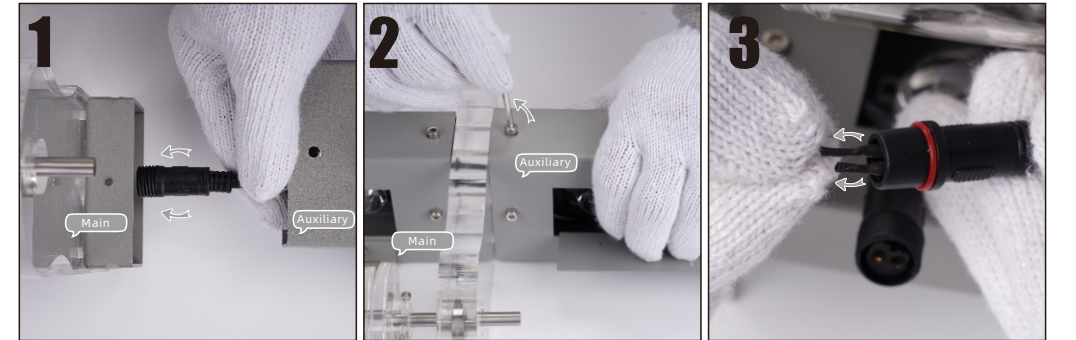
A.Main Machine

- 1.Insert the light tube port into the round bearing of the left engine.
- 2.Insert the round bearing into the right light tube port.
- 3.Then tighten the 4pcs type M screws with the type M screwdriver. (Please point the tube with the screw side towards you, to make the screw tighten quickly.)

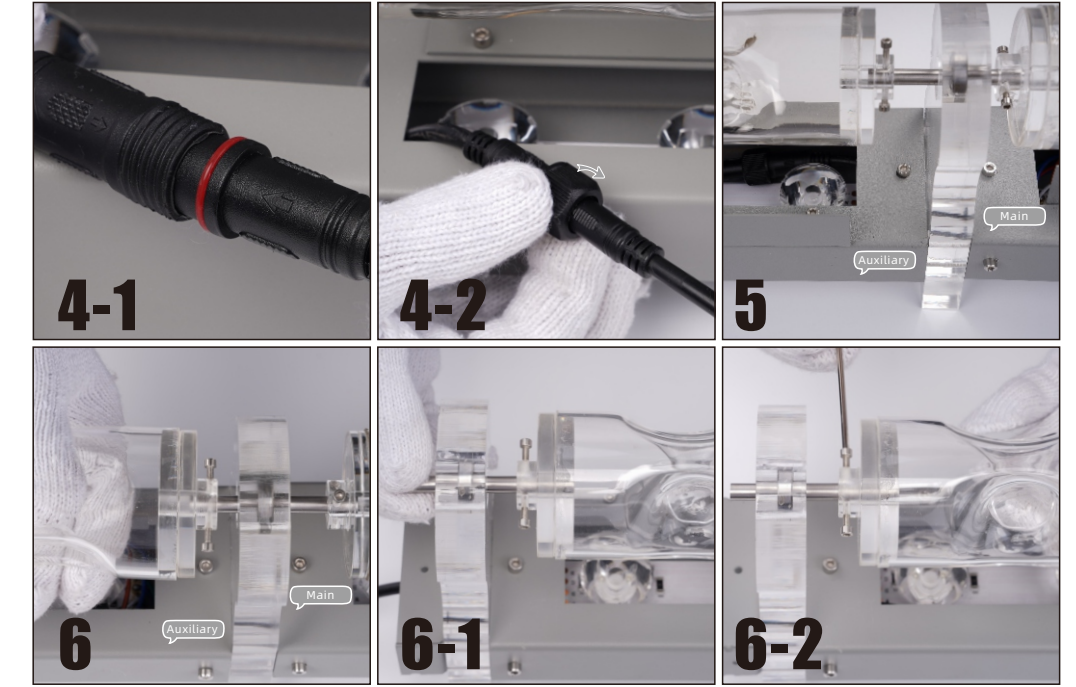


B.Main + Auxiliary Machine

- △Follow steps A to install the Main Machine, and reserve a suitable length of the round bearing for connecting the light tube of the auxiliary machine.
- 1.Pass the connecting wire of the auxiliary machine through the connecting hole.
 - 2.Use type L screws and screwdriver to splice the frame of the main and auxiliary machine.
 - 3.Remove the protective cover from the connection port of the main machine.

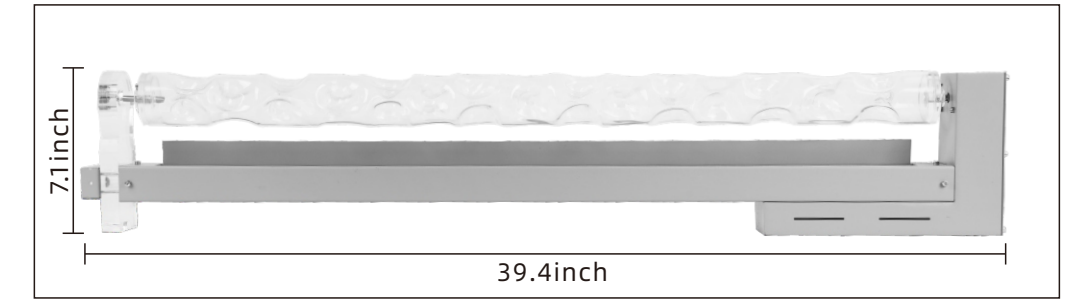


- 4.Connect the wires as indicated by the arrows and tighten them tightly.
- 5.Hide the wires into the machine frame.
- 6.Insert the light tube interface of the main machine into the front round bearing, and insert another round bearing into the tail end interface of the auxiliary machine light tube. Finally, tighten the screws.

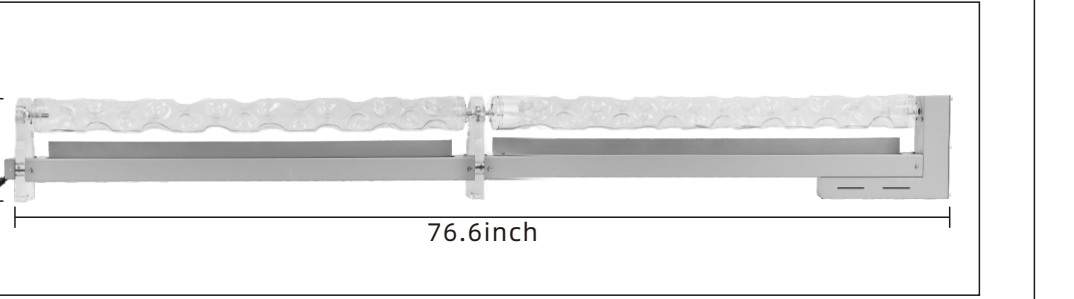


4.Product Description

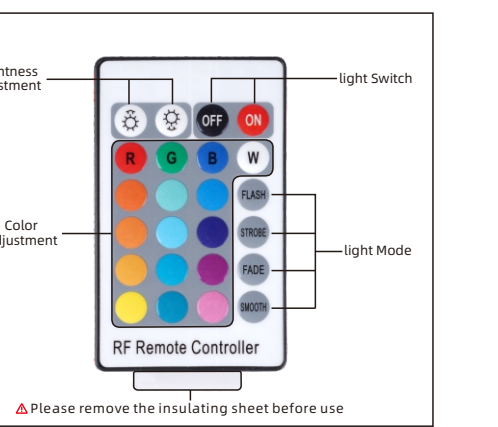
(1)Main Machine



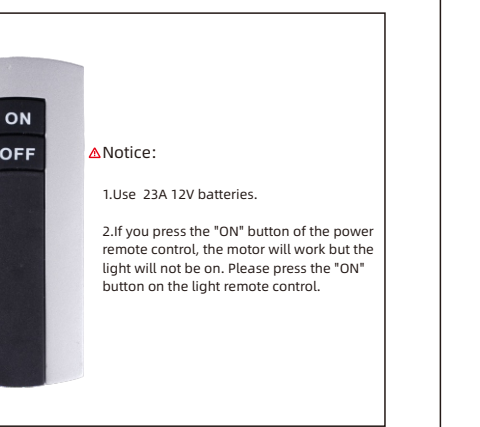
(2)Main + Auxiliary Machine



(3)Light Remote Control



(4)Power Remote Control



5.Product Parameters

Product Name:	Water Wave Atmosphere Wall Projection Lights		
Types Of Control:	Remote Control	Lighting Effects:	Flash, Strobe,Fade, Smooth
Product Size:	39.4"l x 3.2"w x 7.1"h	Product Weight:	12.6lb
Voltage:	110-220v	Light Wattage:	48 Watts
Cri (Color Rendering Index):	90 Ra	Certifications:	Fcc,Ce,Rohs
Lumens (Led Only):	1600 Lm	Led Color Temp (k):	Rgbw
Cord Length/Max Hanging Length:	1.5 Meter	Theoretical Lifetime:	≥30,000 Hours
Warranty Period:	1 Year(Natural Damage Only)	Application Places:	Home/Bar /Party, Etc.

Note: The illustrations of products, accessories, user interface, etc. in the manual are schematic diagrams and are for reference only. Due to later product updates and upgrades, there may be slight differences between the actual product and the schematic diagram, please refer to the actual product, thank you!

6.Troubleshooting

(1)Remote does not work.

- a. Dead Batteries: The remote control may not be working if the batteries are dead or low. Check if the indicator light is on when you pushed any button of the remote. If not, replace the batteries and try again.
- b. Range: The remote control may not be working if it is too far away from the light. The effective remote control distance is generally 6-8 meters.Move closer to the light and try again.
- c. Obstructions: The remote control may not work if there are obstructions between it and the light, such as furniture or walls. Remove any obstacles between the remote and the light and try again.
- d. Interference: Other electronic devices, such as televisions or wireless routers, can interfere with the remote control signal. Try turning off nearby electronic devices and see if the remote works.
- e. Insulating Sheet: Please remove the insulating sheet before use

(2)Missing part / Wrong part / Broken part / Product not working

Contact decode@epdesignlab.com for a free replacement.

(3)There is sound when the motor is working

There is about 18 decibels when the motor is working, which is within the normal standard range.

(4)The light tube slips when turning

Check whether the screws on both sides of the light tube are tightened.