

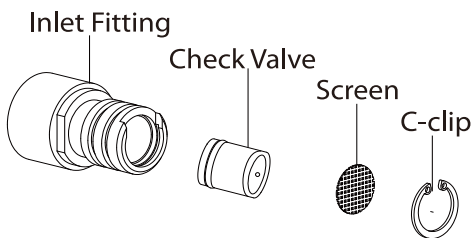
1. 1/2" x 2" NPT Nipple
2. Inlet Fitting
3. Top Escutcheon
4. Top Tee
5. Shower Arm
6. Shower Head
7. Shower Pipe**
8. Soap Dish
9. Hand Shower Holder

10. Hand Shower
11. Stainless Steel Hose
12. Diverter Body
13. Bottom Escutcheon
14. Lower Mount Screw.....(2)
15. Lower Mount (w/ Tape)
16. Wall Anchor.....(2)
17. Set Screw - 2.5mmX4mm.....(2)
18. Swivel Joint

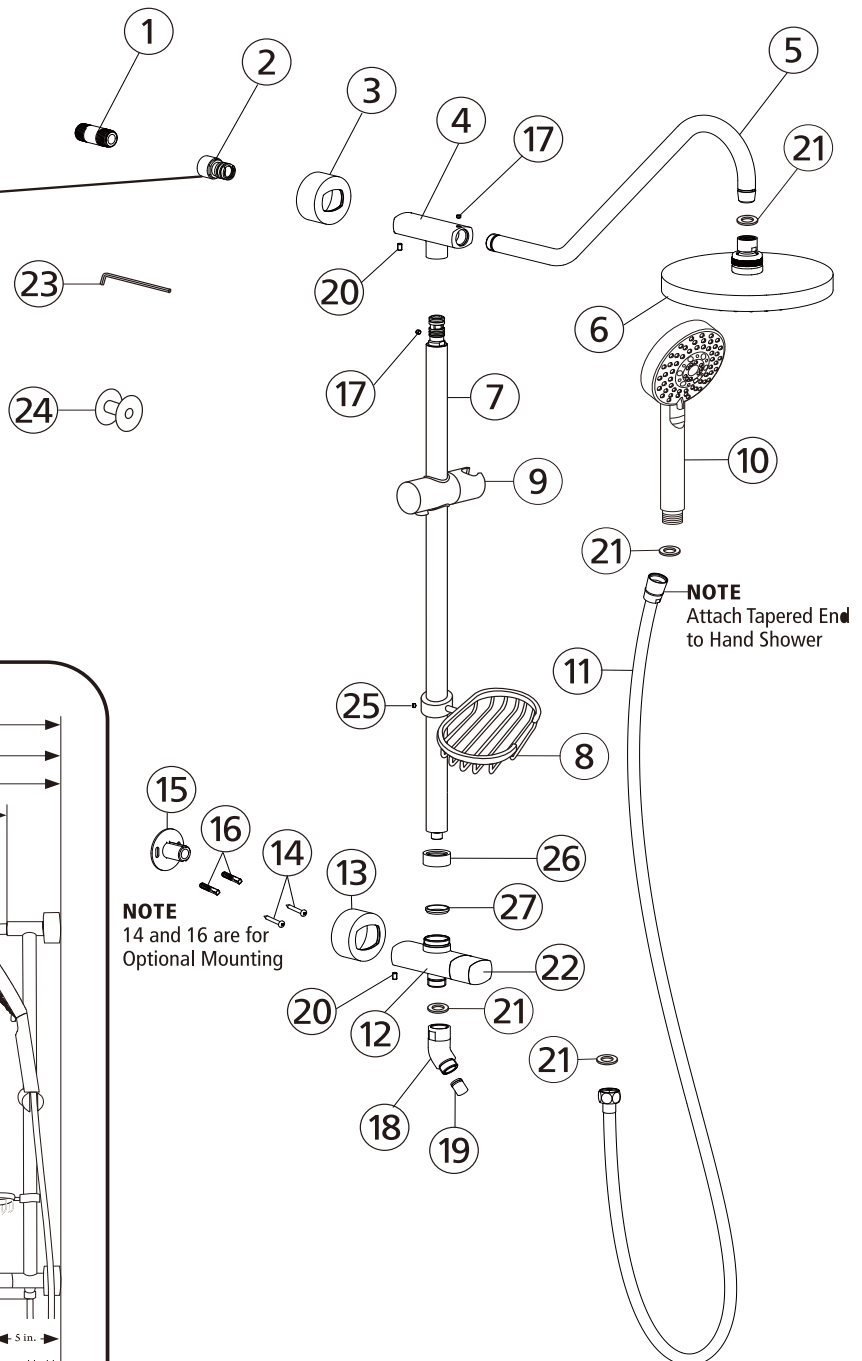
19. Check Valve
20. Set Screw - 2.5X8mm.....(2)
21. Rubber Washer (4)
22. Diverter Handle
23. 2.5mm Hex Wrench
24. PTFE Thread Sealant Tape
25. Set Screw - 3X5mm
26. Shower Pipe Nut
27. Tapered Rubber Seal

Check Valve Removal:

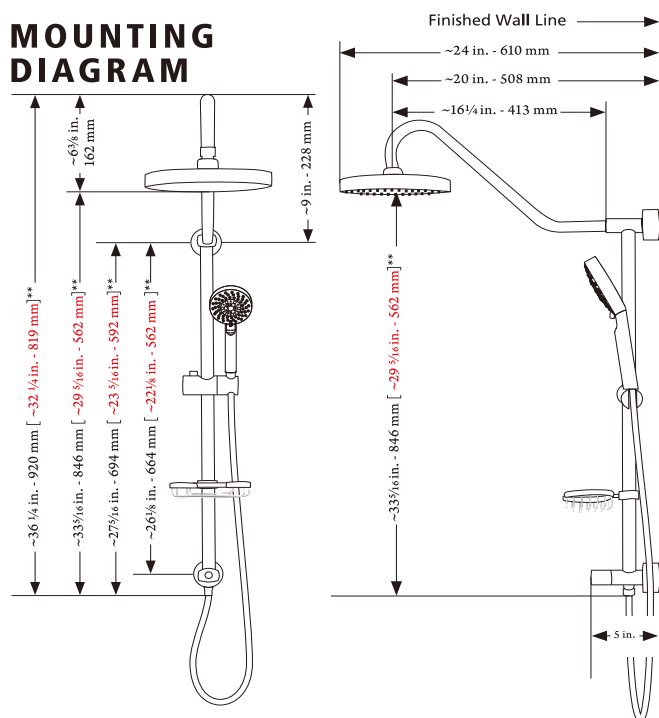
If needed, Check Valve can be removed from Inlet Fitting and cleaned to increase water pressure.



Remove C-Clip, Screen, and Check Valve. Rinse with water to clean debris. Reinstall in Inlet Fitting.



MOUNTING DIAGRAM



NOTE
14 and 16 are for
Optional Mounting

Installation Instructions

FOR NEW CONSTRUCTION OR COMPLETE REMODEL

- A hot/cold mixing valve is required (NOT INCLUDED)
- Nipple should extend ½" past finished wall surface.

TOOLS REQUIRED

Adjustable wrench, Phillips screwdriver, pencil, 2.5mm hex wrench, 3mm hex wrench

ASSEMBLY

1. Determine length of brass NPT nipple (1) needed:
 - a. Place mark on existing shower arm at wall surface. Unscrew shower arm from elbow in wall.
 - b. Measure distance from mark on shower arm to end of shower arm threads. Add ½" to this measurement, and then round to nearest ½".

Example 1: If measurement = 1¼", add ½" = 1¾", rounded = 2" NPT nipple—this is the length needed.

Example 2: If measurement = 1⅝", add ½" = 2⅛", rounded = 2" NPT nipple—this is the length needed.

IMPORTANT: If shower arm is located above tile/fiberglass wall surface you must add distance from sheetrock to face of tile/fiberglass shower wall to the above measurement.

NOTE: If supplied 2" nipple (1) is not correct length based on above formula, you must obtain correct size NPT brass nipple (sold separately), available at most hardware stores.

2. Apply generous amount of PTFE Thread Sealant Tape (24) to both ends of nipple (1).
3. Hand tighten inlet fitting (2) onto nipple (1), then nipple to fitting in wall. Use adjustable wrench on inlet fitting to tighten both connections simultaneously until both are secure with no leaks.
4. Slide hand shower holder (9) off shower pipe (7).
5. Slide soap dish (8) onto shower pipe to desired position and secure with set screw (25).

CAUTION ⚠ DO NOT OVERTIGHTEN

5. Reinstall hand shower hanger (9).
6. Insert rubber washer (21) into top of swivel joint (18) and secure onto bottom of diverter body (12). Swivel joint should move freely side to side.

CAUTION ⚠ DO NOT OVERTIGHTEN

7. Insert shower pipe (7) into top tee (4). Secure with set screw (17).

8. Slide top escutcheon (3) over top tee (4).

HINT Lubricate escutcheon o-ring; a small amount of soapy water will do the trick.

9. Slide bottom escutcheon (13) over diverter body (12).

HINT Lubricate escutcheon o-ring; a small amount of soapy water will do the trick.

10. Loosen set screw (20) on diverter and slide lower mount (15) into diverter body (12).

11. Push top tee (4) over inlet fitting (2) until flush against fitting. Position diverter body (12) so shower pipe is plumb (vertical).

12. Mark location of lower mount with pencil.

13. Wall surface must be clean of any residue and completely dry. Remove covering of two-face tape and reposition lower mount (15) to mark with optional mounting holes. Ensure optional mounting holes are horizontal.

14. Apply pressure to mount for 30 seconds by pushing firmly against the diverter. To ensure proper adhesion, allow one hour before using your ShowerSpa and keep area around the mount as dry as possible for the first 24 hours. Tape will be fully cured after 24 hours.

OPTIONAL: Secure lower mount with permanent wall anchors. Mark hole locations in lower mount (15). Drill 1¼" deep holes using 6mm (¼") masonry/tile drill bit. Insert wall anchors (16) and secure lower mount with screws (14).

CAUTION ⚠ LIVE PLUMBING IN WALL

15. Position shower pipe (7) parallel to wall by sliding diverter body (12) on lower mount (15). Secure diverter to lower mount with set screw (20).
16. Insert rubber washer (21) into both ends of hose (11). Connect hex head end to swivel joint (18) and tapered end to hand shower (10). Place hand shower (10) into adjustable hanger (9).
17. Insert rubber washer (21) in shower head (6) and tighten securely to shower arm (5).