

# 42x29.3cm



## ⚠ SAFETY INFORMATION

- Assemble on a soft surface, such as carpeting, to avoid scratching the pole finish or tearing the umbrella fabric.
- Close the umbrella during windy condition. Do not leave the umbrella open in high winds.
- Use a heavy or weighted umbrella base to stabilize the umbrella.

## CARE AND MAINTENANCE

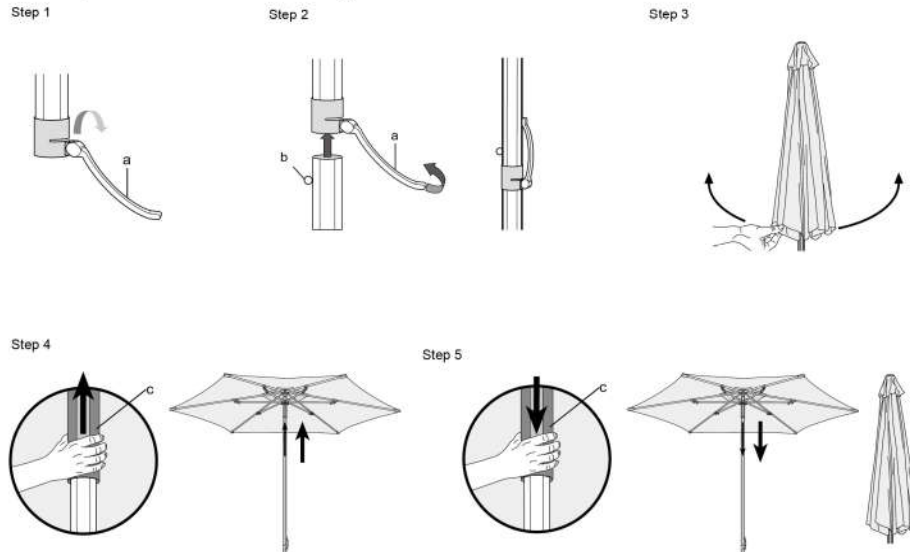
Wash with mild soap and water, rinse with clean water and let air dry.  
Always let the umbrella dry completely before storing.

## PART LIST

Part#	Description	Picture	Qty
A	Umbrella		1
B	Lower Pole		1

## OPERATION INSTRUCTION

- Step 1: Push the level handle (a) on the upper pole down  
Step 2: Insert lower pole section into upper pole, locking the metal pin (b) and folding level handle (a) up again.  
Step 3: Gently pull up one rib and open the umbrella by hand.  
Step 4: Push the runner (c) up against the resistance until the umbrella has opened completely.  
Step 5: Pull the runner down against the resistance until the umbrella has closed.



 **SAFAVIEH**  
O U T D O O R

Model #PAT8002

Product Dimension: 103.15" Dia. x 92.12" H.

