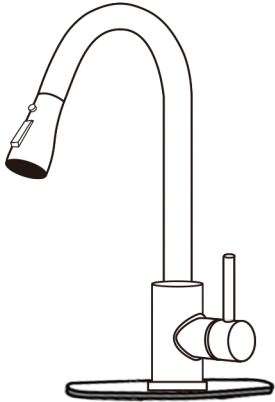


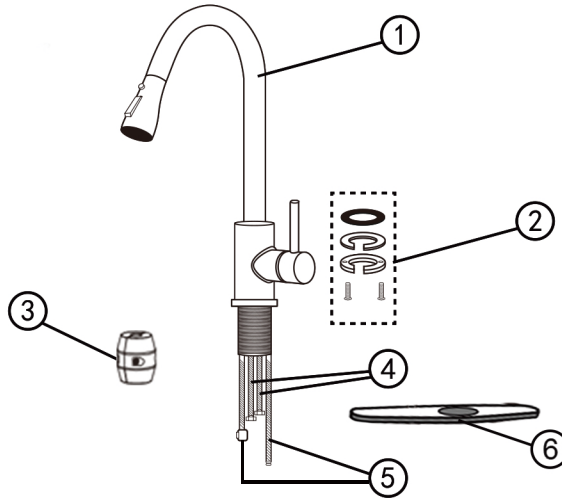
# RuiLing

## Single Handle Pull Down Kitchen Faucet Installation



Thank you for purchase

### Package List



number	name	Quantity
1	Faucet	1
2	Mounting kit	1
3	Faucet Counterweight Ball	1
4	Supply Line(red and blue)	2
5	Pull-down hose (quick connection)	1
6	Deck plate	1

### Installation Steps

1

First, clean the water on the sink, then align the faucet with the hole in the sink

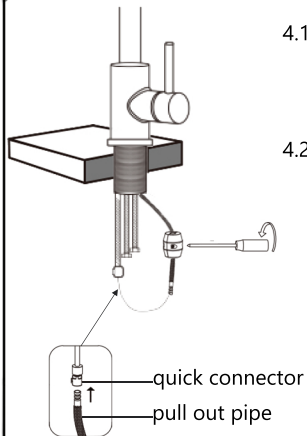
2

Deck plate depends on your sink type.  
3-hole: Needs deck plate;  
1-hole: No deck plate required

3

Install the faucet body into the hole. Ensure the rubber gasket is just below the bottom of the sink or countertop, and reassemble the parts in the order shown. Finally, tighten with a screwdriver.

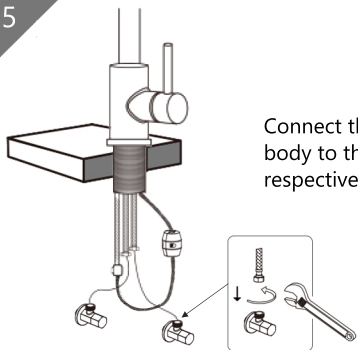
4



4.1 First, push the quick connector of the pull-out hose towards the outlet of the faucet until it locks.

4.2 After confirming the faucet is securely installed, fix the gravity ball of the pull out pipe at the marked position. Ensure the spray head operates smoothly without jamming, then tighten with a screwdriver.

5



Connect the two water pipes of the faucet body to the cold and hot water valves respectively.

## Application Guide

1. After opening the product package, check that all parts are complete. If there are any defects, please contact us immediately.
2. Ensure the installation size of the hot and cold water pipes matches the embedded water inlet pipes.
3. The faucet has been tested and adjusted at the factory. Please do not install it yourself to avoid affecting its function.
4. When connecting the water pipes, note that the red pipe is for hot water and the blue pipe is for cold water.
5. Before installation, ensure the embedded pipeline is free of impurities and sludge to prevent blockages and ensure proper water flow.
6. After installation, open the water source and check that all connections are tight to avoid leaks.
7. The faucet contains silicone and other materials that are not heat-resistant. Do not use it in high-temperature environments or with water temperatures exceeding 90°C for extended periods.

## Maintenance Use

### Cleaning Instructions

1. Use mild detergent (like dish soap); avoid ammonia, acid, bleach, or abrasives.
2. Rinse and keep the surface dry.

### Faucet Maintenance

1. Install by qualified personnel.
2. Clean with a sponge and dry with a cloth.



## Warranty and Guarantee

Ruiling products are warranted to the original consumer purchaser to be free of defects in materials or workmanship. We will replace FREE OF CHARGE any product or parts that proves defective.

This warranty excludes incidental or consequential damages and failures due to misuse, abuse, or normal wear and tear. It does not cover industrial, commercial, or business use. Purchasers in these categories receive a five-year limited warranty from the date of purchase, with all other warranty terms applying, except for the duration.

This warranty is valid for the original owner or end-user and is non-transferable.

If you have any questions, contact the Customer Service for assistance.

### Failure analysis and treatment

Problems	Reasons	Treatments
Faucet body loose	locking parts loose under the basin	Re-tighten the locking parts
Faucet dripping	Valve core is bad	Replace the valve core
	The faucet shell is bad	Replace the shell or product
	Poor assembly	Replace the product or ask a professional to repair it
Surface blistering	Poor electro-plating	Replace parts or products
Spout spray	No gasket or poor gasket	Install or replace gaskets
Braided pipe leakage	Connector is not fitted with gasket or poor gasket	Install or replace gaskets
	Without O ring or broken	Install or replace O ring
Low water flow	Low water pressure	To improve the water pressure