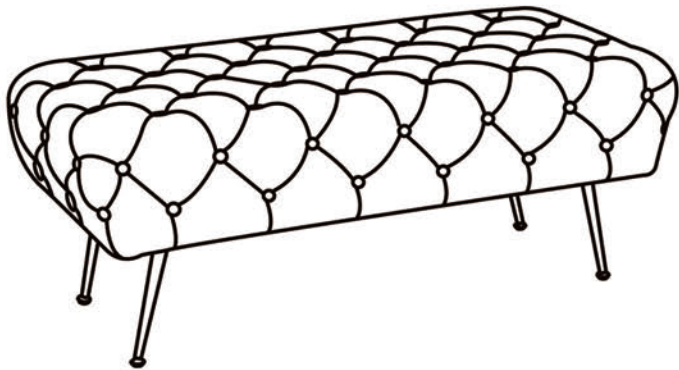





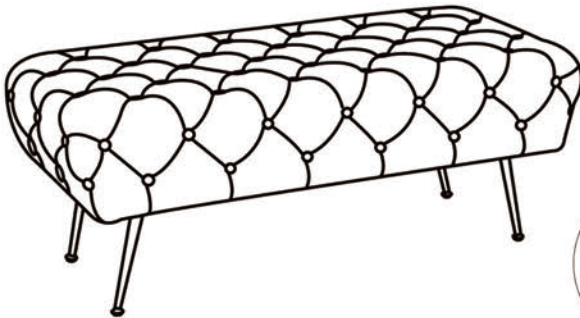
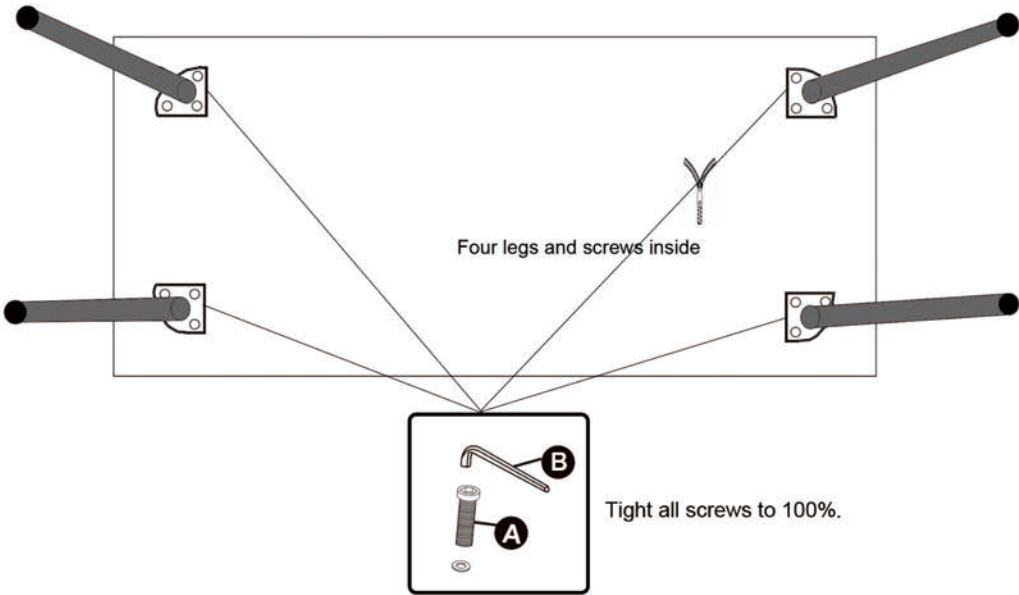
ASSEMBLY INSTRUCTION

PACKING LIST	CODE	PARTS	QTY
	1	BENCH	1
	2	LEGS	4
	3	MANUAL INSTRUCTION	1



HARDWARE LIST	CODE	PARTS	QTY
	A	M6x25mm  	12
	B	ALLEN KEY 	1

BEFORE ASSEMBLY,TAKE FOUR LEGS AND SCREWS UNDERNEATH OF SEAT.



Make sure of a leveling floor before adjust this chair.