

## **WARRANTY**

We strive to offer high-quality products, and we also try our best to satisfy each and every customer that orders from us with product or service as needed. We provide 30 days warranty starting from the time you receive the item. Each customer must provide a record of their order such as the order number, or item receipt for any items that are out of the warranty period you may also still receive replacement parts by purchasing them with our company if they are available.

**Are you having difficulty  
with assembly? Missing parts?**

**PLEASE DON' T RETURN THE ITEM TO  
RETAILER**

**For help call or email with your order No.**

**Customer service:**

**888-214-6610**

**Open Monday through Friday**

**9:00AM-5:00PM CST**

**Email:**

**customerservice@hulalahome.com**

**24h**

**HULALA**  
H O M E



**ITEM NO.RCLB0170**

---

### **NOTE:**

This brochure contains IMPORTANT safety info. Please read and keep for future reference.

---

## MAINTAINANCE AND WARNING





- Keep furniture away from heat.
- Do not clean furniture with harsh cleansers or polish. Do not use detergents, Solvents, abrasives, spray packs or leather cleaner. Use non-color mild soap with warm water clean spills(Mix 1:10 soap to water)
- Do not place furniture under direct sunlight, material will possibly fade over time.
- Do not use on site dry Cleaning machine.
- Children should not climb or jump on the furniture.
- Do not write on furniture without a padded barrier to protect the surface.
- To obtain the longest lifespan of your outdoor products, avoid exposure to rain or snow, and direct sunshine for long time. Whenever possible cover the product and/or place under patio or awnings.
- Not for commercial use, For residential use only.



Weight Limitation

**220LBS**

## PARTS LIST

A*1 	B*1 
C*2 	D*2 



Estimated Duration Of Assembly

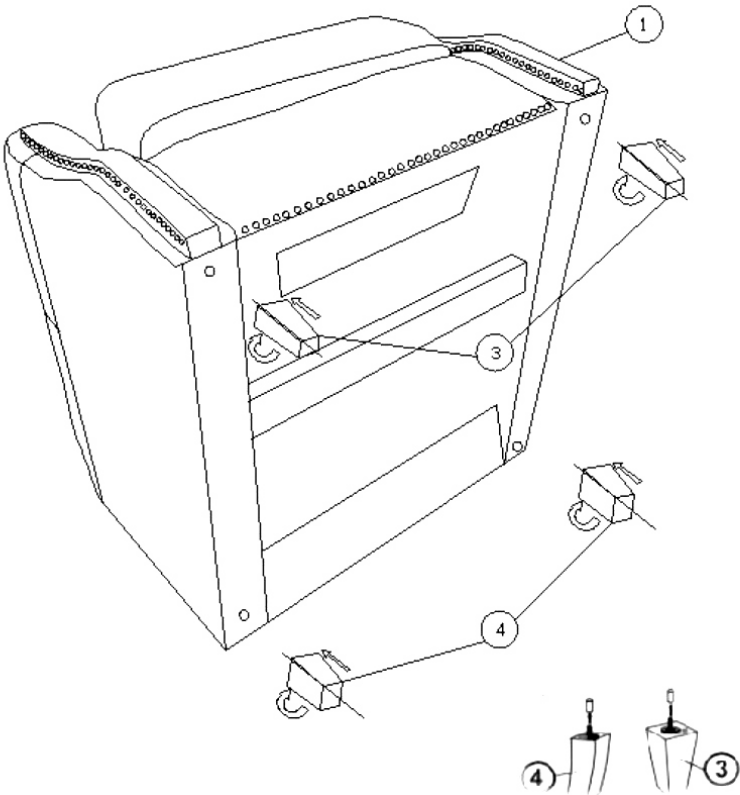
**5-10 MINUTES**

# ASSEMBLY INSTRUCTIONS

1.Remove all parts from the carton and place them on a protected surface or carpet. Take out the wood legs (3 & 4) out of the seat box.

No.	Parts	Quantity
1		1
2		1
3		2
4		2

2. Attach the wood legs (3 & 4) to the corners of the seat cushion (1) as shown.



**2. Attach the wood legs (3 & 4) to the corners of the seat cushion (1) as shown.**



Correct side view  
Vue latérale correcte  
Vista lateral correcta

Correct back view  
Vue arrière correcte  
Vista posterior correcta

**3. Attach the back cushion (2) to the seat cushion (1) by sliding the receivers into the mechanism posts located on the seat cushion (1). From the front of the recliner, press down on both sides of the back cushion (2) to firmly secure. The back cushion (2) and seat cushion (1) will automatically lock into place. Then pull the back flap down tightly and attach the back flap to the bottom of the seat**

